

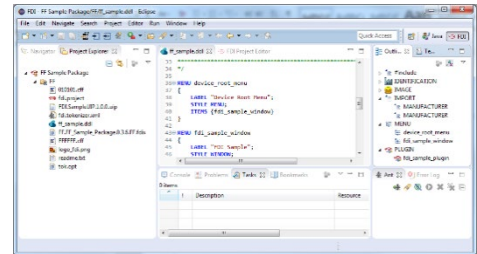


## FDI Package IDE Integrated Development Environment



### Description

The FDI Package IDE makes writing, running and testing of FDI Device Packages and EDDs easier and more efficient by providing the complete tool chain you need for FOUNDATION Fieldbus, HART, HART IP, PROFIBUS, PROFINET and ISA100 devices in one application. The Generic Protocol Extension allows developers to write and run device packages for any other protocol, like Modbus or Ethernet IP.



### Features

- The IDE supports EDD editing and tokenizing of source files into the FDI encoded file format. The encoded EDD, the UIP (developed using Visual Studio), and the attachments are combined to form the FDI Device Package (.fdix).
- The IDE supports EDD editing and tokenizing of HART EDDs into the HART fm6 and fm8 encoded file formats, which allows for development and maintenance of current HART EDDs.
- The IDE supports EDD editing and tokenizing for FOUNDATION Fieldbus DDs into the FF ffo and ff5 encoded file formats, which allows for development and maintenance of current FF DDs.
- The Reference Runtime Environment (RRTE) is available for testing and debugging FDI Device Packages as well as HART and FF EDDs built with the IDE.
- The FDI Package Conformance Test Tool (CTT) performs automated conformance testing of FDI Device Packages.
- Supports OPC UA Communication Servers for exposing data to non-FDI clients (part of the RRTE).
- Support for device variants (Profibus/Profinet only).
- HTML5 UIP support in FDI Device Packages.
- Conformance Test Tool (CTT) test cases for HTML5 UIPs.
- EDD debugging and host assessor.
- DeviceInfo file generation for HART Packages.

## System Requirements

- Microsoft Windows 10 (64-Bit only)
- 1-GHz-Processor or better
- 8 GB RAM
- PC user has 'Administrator' access enabled
- 700MB Free space on hard disk
- AdoptOpenJDK Java Development Kit Standard Edition 8 (Hotspot 8.0.222.10)
- Eclipse IDE for Java Developers, Version 4.5.x (Mars.2)
- Com0Com Null-modem emulator (for HART device simulation)

## General Hardware Requirements

- Registered HART Modem, or National Instruments USB-8486 FF interface, or Softing PBpro USB (DUL-NN-012410) PROFIBUS interface
- USB Port
- Ethernet Port

## Kit Components

Qty	Item	Rev. No.
1	FDI Package IDE Toolkit (TK10009)	1.4.2
1	ISA100 Communication Server (TK10095) <i>applicable to ISA100 licenses</i>	1.0.7
1	HART-IP Communication Server (TK10092) <i>applicable to HART licenses</i>	1.1.0
1	Ethernet/IP Communication Server (TK10156) <i>applicable to Generic licenses</i>	1.0.1