

User Rights

The installation of DLUBAL programs such as RSTAB, RFEM, SHAPE-THIN, SHAPE-MASSIVE etc. requires **administrator rights**.

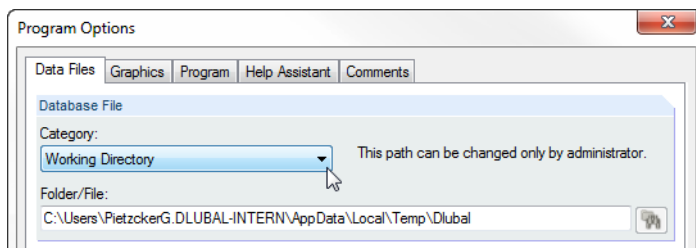
It is recommended to also use administrator rights when you start the software for the first time. If your computer won't display any error messages, you can assign the rights for running DLUBAL applications also to the Users.

Note: Only the administrator is able to assign user rights.

Rights for folders

As a User of DLUBAL programs you need rights for reading and writing concerning the following folders:

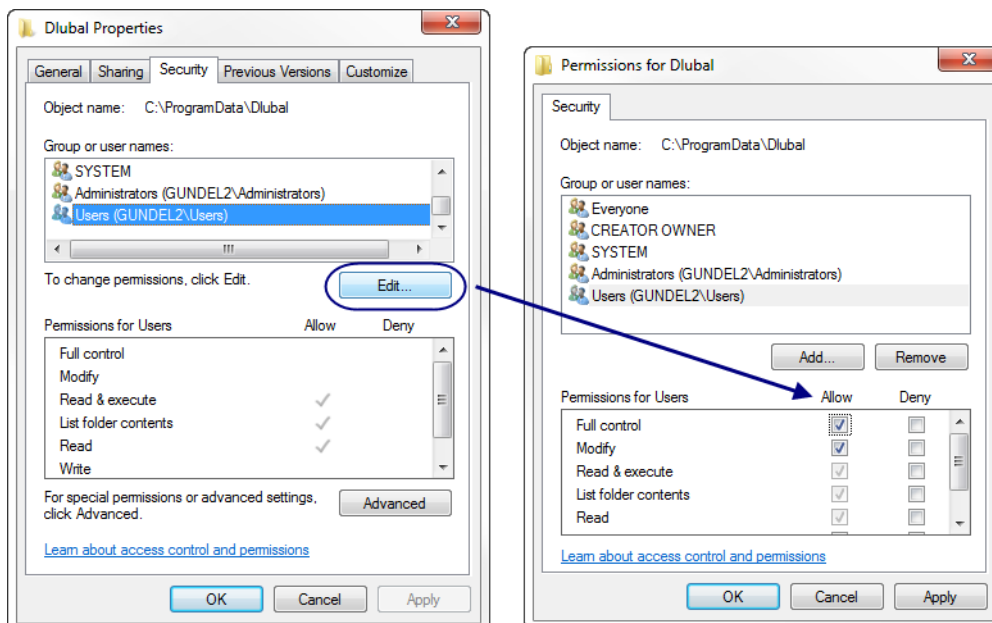
- DLUBAL program folders *RSTAB 8.xx*, *RFEM 5.xx*, *SHAPE-THIN 8.xx*, *RX-TIMBER 2.xx* etc.
Those folders are located in the directory *C:\Program Files\Dlupal* (or *C:\Program Files (x86)\Dlupal* for SHAPE-MASSIVE) by default.
- DLUBAL master data folder *General Data*
Each program has its own master data folder. You find the folder in the directory *C:\ProgramData\Dlupal* by default.
- Folder of DLUBAL projects
- Folders of temporary files
By default, this folder is located in the directory *C:\Users\"Sign-in name"\AppData\Local\Temp\Dlupal*.
You can check the path of the working directory in the *Program Options* dialog box of RFEM/RSTAB.



The rights can be assigned by means of the Explorer: Select the folder and open its properties. Then, in the dialog tab *Security*, you can define for example full control for the *Users* group or for particular Users.

Example

Full control for the user group *Users* on *C:\ProgramData\Dlupal*. The settings for the subfolders are usually passed on. Thus, it is sufficient to provide the Dlupal folder with full control rights.





Rights for registry

Additionally, a User needs rights for reading and writing for the following registry entries:

- HKEY_LOCAL_MACHINE\SOFTWARE\DLUBAL
- HKEY_LOCAL_MACHINE\SOFTWARE\Wow6432Node\DLUBAL
- HKEY_CURRENT_USER\Software\DLUBAL

You can assign the rights in the Registry Editor that you open by entering **regedit** in the input field of the Start menu. Set the appropriate path and select the entry DLUBAL. Then, by selecting *Permissions* on the *Edit* menu, you can define for example full control for the *Users* group or for particular Users.

Additional information can be found in the [User Rights video](#) which is available on our website.

If you still have problems or questions concerning the start of RFEM or RSTAB with user rights, please contact our technical support.

Your DLUBAL SOFTWARE team