

Touchscreen Calibration – ElmaTear2

WARNING: Any maintenance work undertaken on a James Heal instrument must be done so by a trained and competent person. Where electrical work is detailed, this should only be completed by a qualified engineer. James Heal is not responsible for damage or injury arising from work carried out by any person not qualified to do so. If in doubt, please contact James Heal or your local James Heal Agent.

Switch on the Elmatear

The display should show the normal start up screen as on the right.

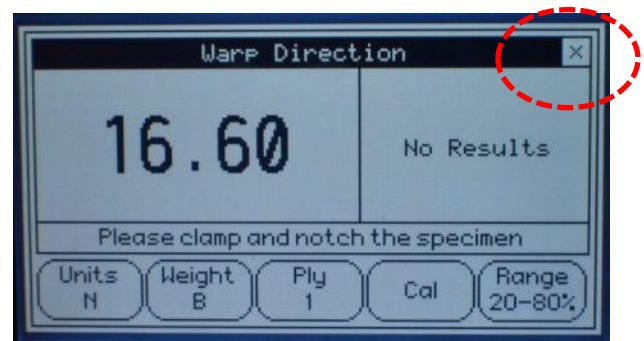
If the Elmatear automatically skips passed this screen this indicates a fault and the touchscreen may need replacing.

Tap the screen.



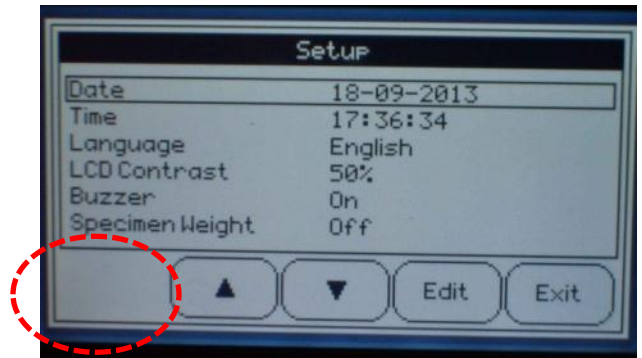
You should now see the Test screen as shown on the right.

Press the X at the top right.



You should now see the Setup screen as shown on the right.

Press the empty area at the bottom left of the screen 5 times.

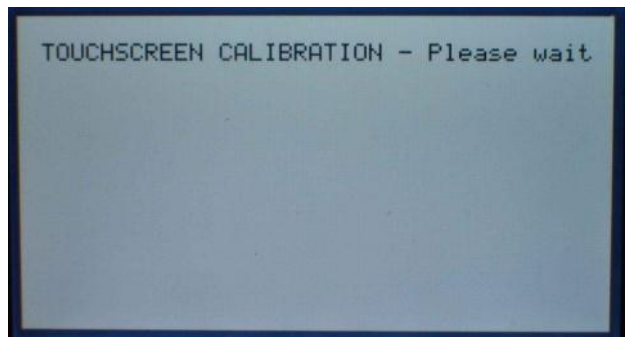
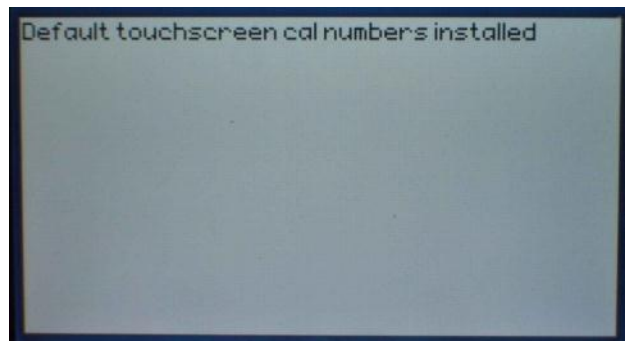


You should now see the Engineers screen as shown on the right.

Press the button **TS Cal**

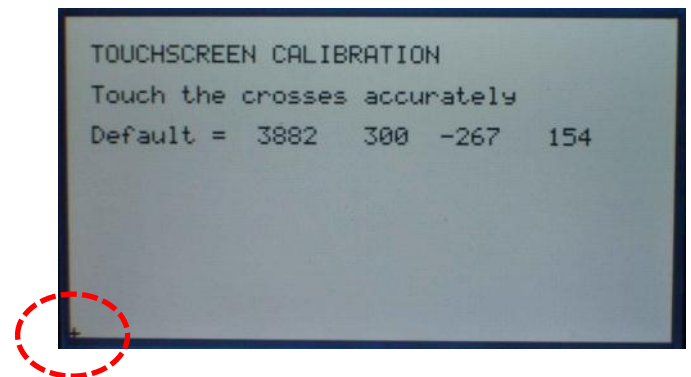
Units N	Ply 1	Serial Number 855/13/5098	Buzzer
Weight B	Cal 150.40	Serviced Date --/--/--...	TS Cal
Angle = Force =	10.1 16.60	Odometer 000000003	USB OFF
Brake OFF	Gravity 9.812	Cutter SW Release SW1 Release SW2	Default
	LCD 50%		Exit

The display should show the following screens



With a fine point (NOT A SHARP POINT) press the + at the bottom left of the screen.

The + will move to the top right corner.
Again press the + symbol with a fine point.



When complete press **Esc** to exit the touchscreen calibration.

Press **Exit** at the bottom of the engineers screen to return to normal operation.

