

The pendulum is not releasing – ElmaTear 655

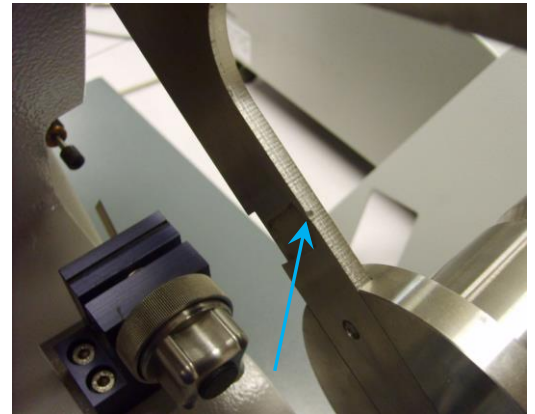
WARNING: Any maintenance work undertaken on a James Heal instrument must be done so by a trained and competent person. Where electrical work is detailed, this should only be completed by a qualified engineer. James Heal is not responsible for damage or injury arising from work carried out by any person not qualified to do so. If in doubt, please contact James Heal or your local James Heal Agent.

Check the pendulum arm at the point where it rests on the release pin.

If the pendulum is allowed to drop onto the release pin then the point of contact can become dented.

If any damage is found file the surface flat and polish it with abrasive paper.

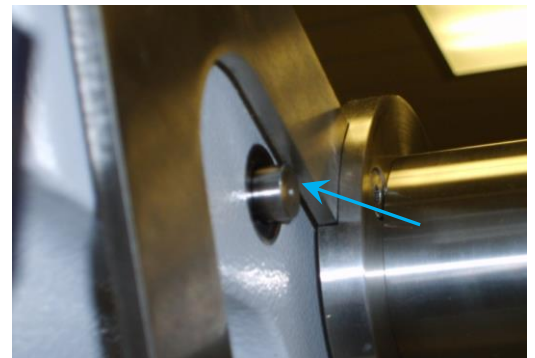
Also inspect the tip of the release pin for damage which would appear as a flattening of the surface.



Check the release pin sits only half way under the thickness of the pendulum.

If it protrudes too far there may be too much friction to release the pendulum.

If the pin does not protrude enough then the pendulum may accidentally drop if the machine is knocked.



The position of the release pin can be adjusted by adjusting the position of the nut at the rear of the release solenoid.

