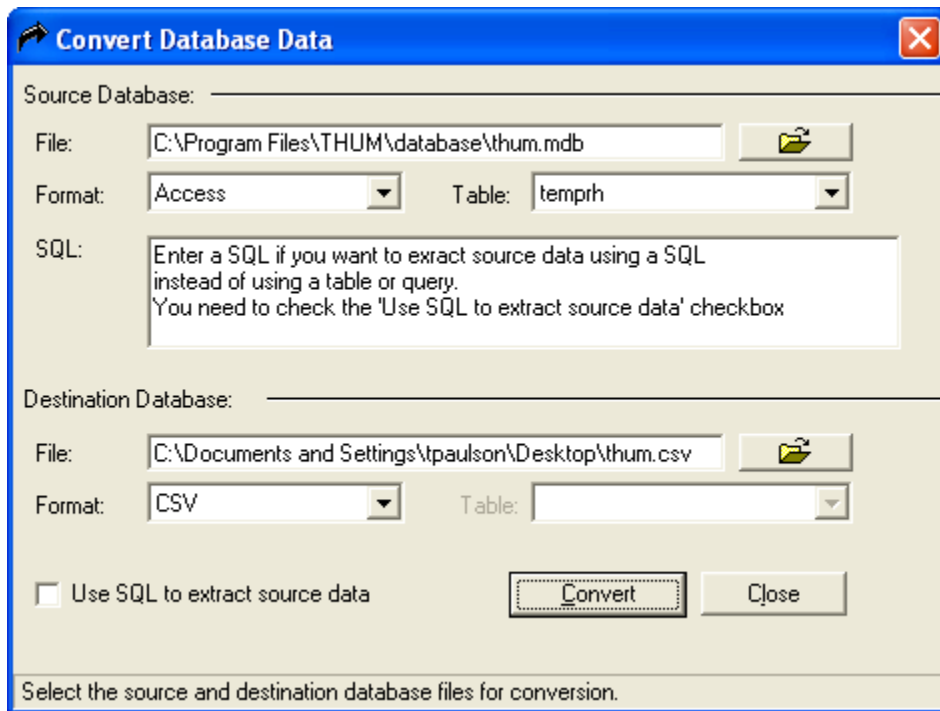
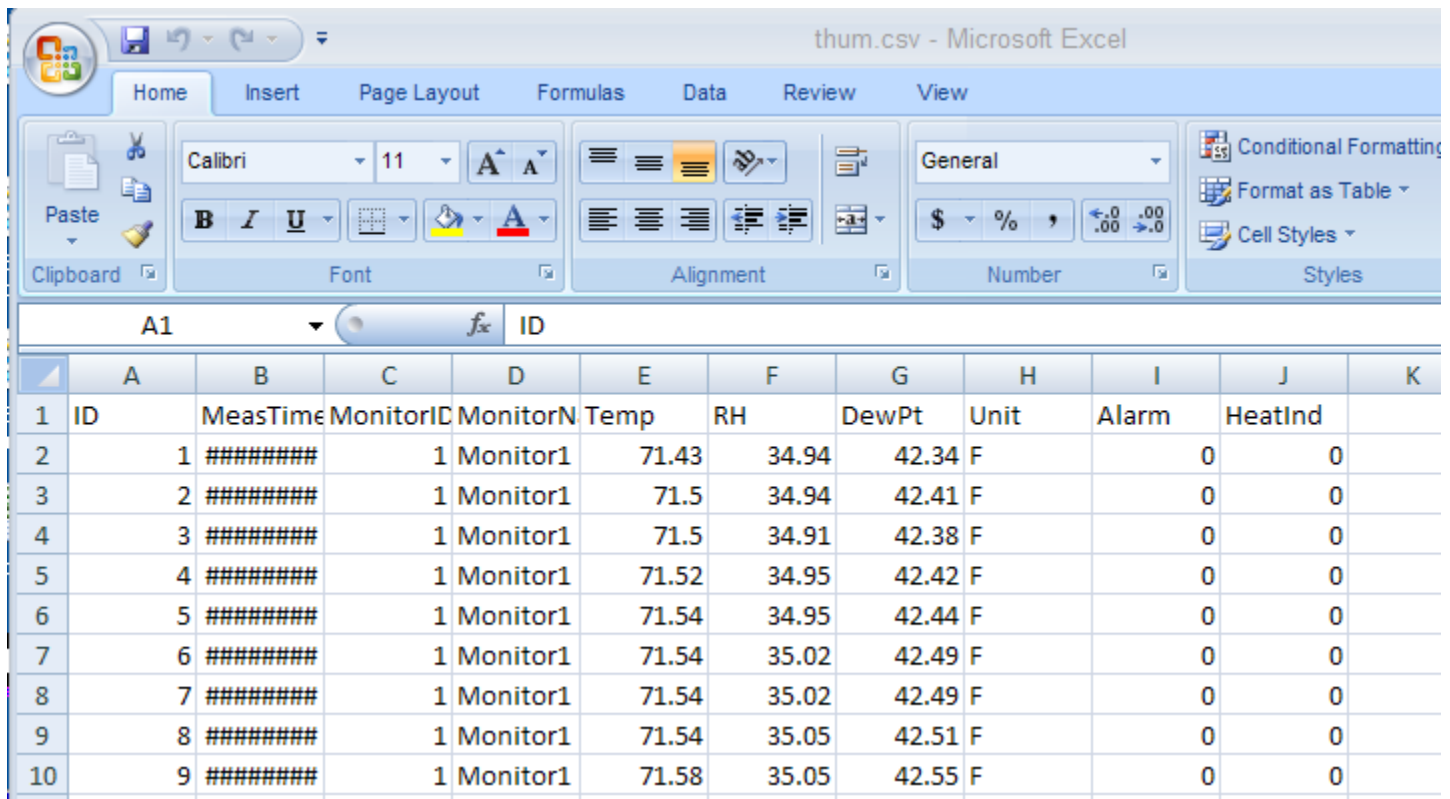


Extract data from Windows THUM 2.0 software

Open the Convert Database tool from the Options menu on the THUM software. Set as shown below. Your destination file location will be different.



Open the thum.csv created in Excel.



	A	B	C	D	E	F	G	H	I	J	K
1	ID	MeasTime	MonitorID	MonitorN	Temp	RH	DewPt	Unit	Alarm	HeatInd	
2	1	#####	1	Monitor1	71.43	34.94	42.34	F	0	0	
3	2	#####	1	Monitor1	71.5	34.94	42.41	F	0	0	
4	3	#####	1	Monitor1	71.5	34.91	42.38	F	0	0	
5	4	#####	1	Monitor1	71.52	34.95	42.42	F	0	0	
6	5	#####	1	Monitor1	71.54	34.95	42.44	F	0	0	
7	6	#####	1	Monitor1	71.54	35.02	42.49	F	0	0	
8	7	#####	1	Monitor1	71.54	35.02	42.49	F	0	0	
9	8	#####	1	Monitor1	71.54	35.05	42.51	F	0	0	
10	9	#####	1	Monitor1	71.58	35.05	42.55	F	0	0	

If the MeasTime is showing #####

Increase the width of the column so that both the date and time are shown. You can also select the entire B column and right click/format cells, to change the date/time format to the style you prefer.

	A	B	C	D	E	F	G	H	I	J	K
1	ID	MeasTime	MonitorID	MonitorN	Temp	RH	DewPt	Unit	Alarm	HeatInd	
2	1	5/19/2010 8:57	1	Monitor1	71.43	34.94	42.34	F	0	0	
3	2	5/19/2010 8:58	1	Monitor1	71.5	34.94	42.41	F	0	0	
4	3	5/19/2010 8:59	1	Monitor1	71.5	34.91	42.38	F	0	0	
5	4	5/19/2010 9:00	1	Monitor1	71.52	34.95	42.42	F	0	0	
6	5	5/19/2010 9:01	1	Monitor1	71.54	34.95	42.44	F	0	0	
7	6	5/19/2010 9:02	1	Monitor1	71.54	35.02	42.49	F	0	0	
8	7	5/19/2010 9:03	1	Monitor1	71.54	35.02	42.49	F	0	0	
9	8	5/19/2010 9:04	1	Monitor1	71.54	35.05	42.51	F	0	0	
10	9	5/19/2010 9:05	1	Monitor1	71.58	35.05	42.55	F	0	0	
11	10	5/19/2010 9:06	1	Monitor1	71.59	35.09	42.59	F	0	0	
12	11	5/19/2010 9:07	1	Monitor1	71.61	35.09	42.61	F	0	0	
13	12	5/19/2010 9:08	1	Monitor1	71.58	35.09	42.57	F	0	0	

Excel has a limit to the number of records it can display. If your THUM database has too many records, you can choose a date range you want to export. This is done by using the SQL statement. See picture below. You can change the date in the statement to export the data you need. Be sure to put a check in the "Use SQL to extract source data".

