

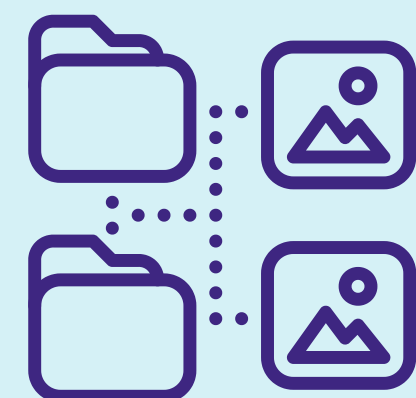
WHAT DO YOU COMMUNICATE OR SHARE BY OZOVERBINDZORG

- Urgent keeps calling!
- Response time of 2 working days
- Take a critical look at who and what you communicate, discuss this in the client's network



KEEP TRACK

- **Network:** stakeholders (professionals, informal carers and family)
- **Interdisciplinary collaboration**
- **Multidisciplinary consultations:** planning and organizing (digital) MDOs



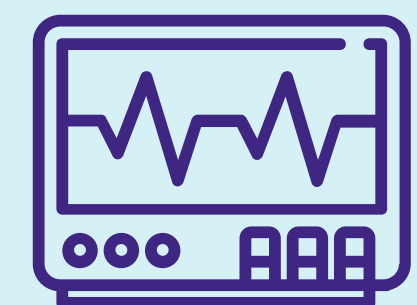
SHARING

- **Documents:** execution requests, reports, advance directives, authorizations and/or care plans
- **Photos:** of wounds, eczema or other spots
- **Videos:** poses or exercises
- **Treatment wishes/questionnaires /pro-active care plan:** transparent and up to date for everyone



THROUGHOUT THE NETWORK

- **Inform:** communicate current situation and agreements
- **signal**
- **Coordination:** about care requests/exchange data, such as WMO, WLZ applications, start/end care or external agreements and requirements.
- **Keeping track** of overload, tasks and responsibilities



MONITORING

- **Home monitoring**
- **Day Curve Diabetes**
- **Signaling:** keeping track of health, such as weight, memory or blood pressure.
- **Transmural care:** around heart failure
- **Multiple involved**
- **Link with the professional systems**