

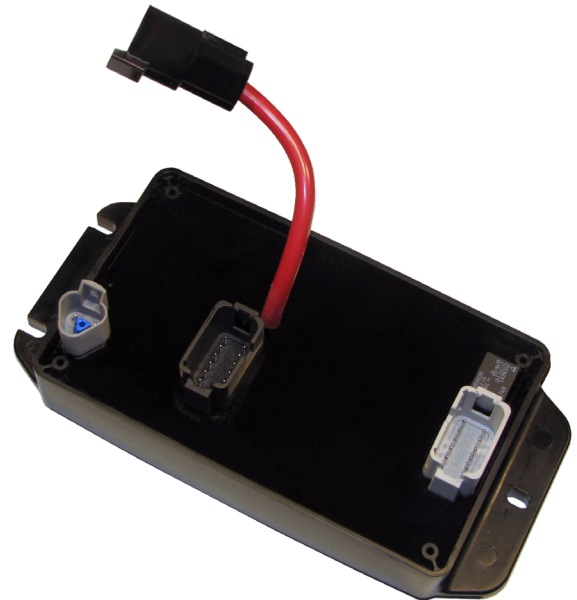
IQSBlock 100A J1939 Output Module

10 channel PWM output module designed for extreme heavy duty applications



Key Features

- SAE J1939 communication protocol
- Operating voltage range of 8-32 VDC
- Reverse battery protection
- Voltage transient protection
- Short circuit and overload protection
- Up to 25.5A* per output
- Up to 100A per module
- Sealed Deutsch connectors
- Simple 3-point mounting
- Output current feedback
- Adjustable output current limiting
- Independent frequency and duty cycle
- IP67 Rated (with properly mated connectors)
- LED Status Indicators



Unit Connections

3 Pin Deutsch (SAE J1939)

Communication Protocol	SAE J1939
Connector	DT04-3P
Mate Connector	DT06-3S
Mate Contact	0462-201-16141
Mate Wedge Lock	W3S-1939

1 Pin Deutsch (Power)

Connector	DTHD04-1-4P
Mate Connector	DTHD06-1-4S
Mate Contact	0462-203-04141

12 Pin Deutsch (Outputs 1-6)

Connector	DTF15-12PA
Mate Connector	DT06-12SA
Mate Contact	0462-201-16141
Mate Wedge Lock	W12S

12 Pin Deutsch (Outputs 7-10)

Connector	DTF15-12PB
Mate Connector	DT06-12SB
Mate Contact	0462-201-16141
Mate Wedge Lock	W12S

Electrical Specifications

Power Supply Voltage	8 - 32 VDC
Output Current (1-8)	25.5A* Max
Output Current (9-10)	10.0A Max
Total Module Current	100A Max

Environmental Specifications

Storage Temperature	-40° to 85° C
Operating Temperature	-40° to 85° C
IP Rating	IP67
Weight	1.70 lbs.

*On highly inductive loads, outputs may require external clamping diodes to clamp inductive flyback voltage spikes to ground.

Part Number

PN 100000798

STW Technic, LP - 3000 Northwoods Parkway, Suite 240 - Peachtree Corners, GA 30071 - United States of America

sales@stw-technic.com

20200526_v2.1

www.stw-technic.com