

# 793 Windows 10 Controller Network Setup

## Enabling FTP Service on Windows 10

Open the Control Panel from the desktop icon or use the search bar and type in Control Panel to find it (Figure 1).



Figure 1 – Control Panel Short-cut

Type Program and Features into the search bar to open it > Turn Windows Features on or off > Check and Expand FTP Server > Check FTP Service > Check and Expand Web Management Tools > Check IIS Management Console (Figure 2).

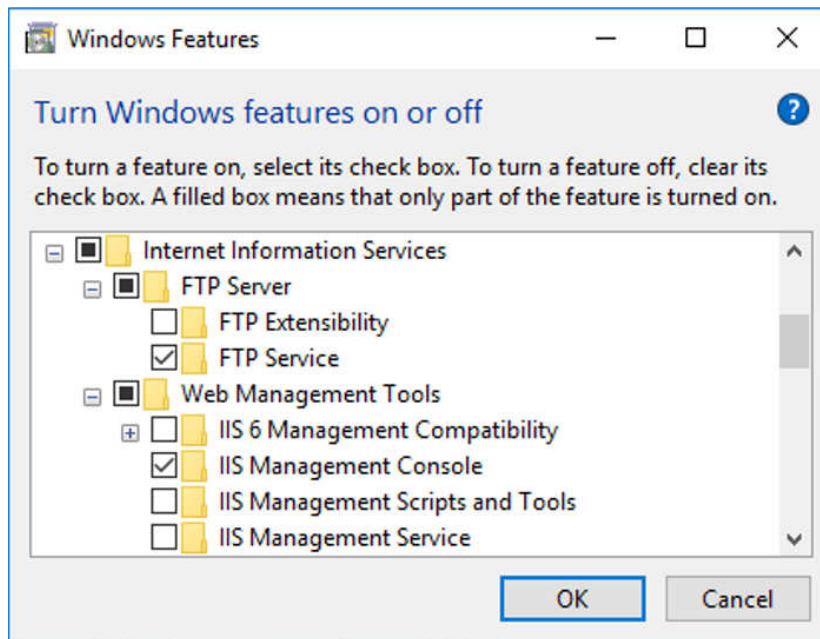


Figure 2 – Turning on Internet Information Services (IIS)

Scroll further down the list of Windows features and check Telnet Client (Figure 3). Click OK to install new features.

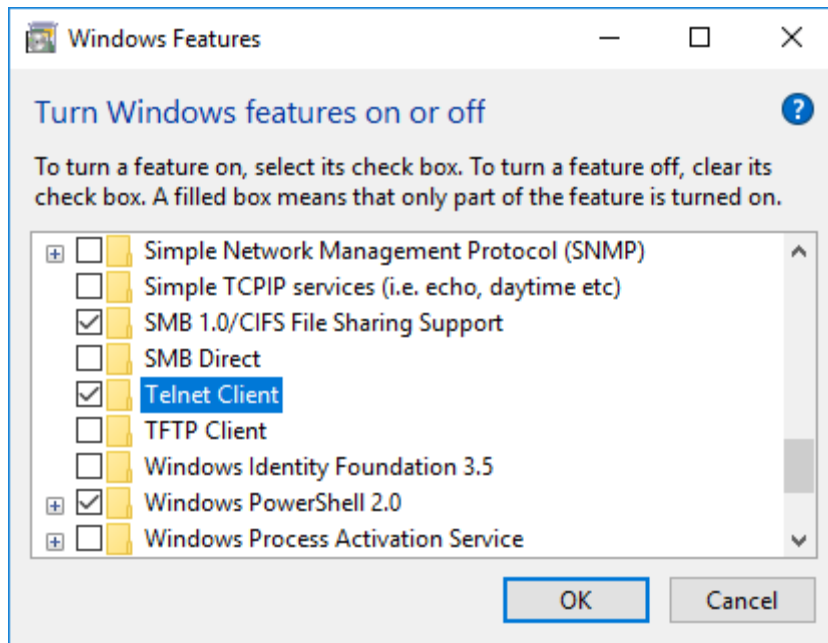


Figure 3 – Turning on the Telnet Client

## Configuring the Network Adapter

Start > Control Panel > Network and Sharing Center > Change Adapter Settings > Right-click on Adapter > Rename > Change name to **CtrlrNet** (Figure 4).

Verify the network adapter is enabled. If it says **Disable this network device** that means the network adapter is already enabled. If it says **Enable this network device** then double-click on **Enable this device** to enable it then close the window (Figure 4).

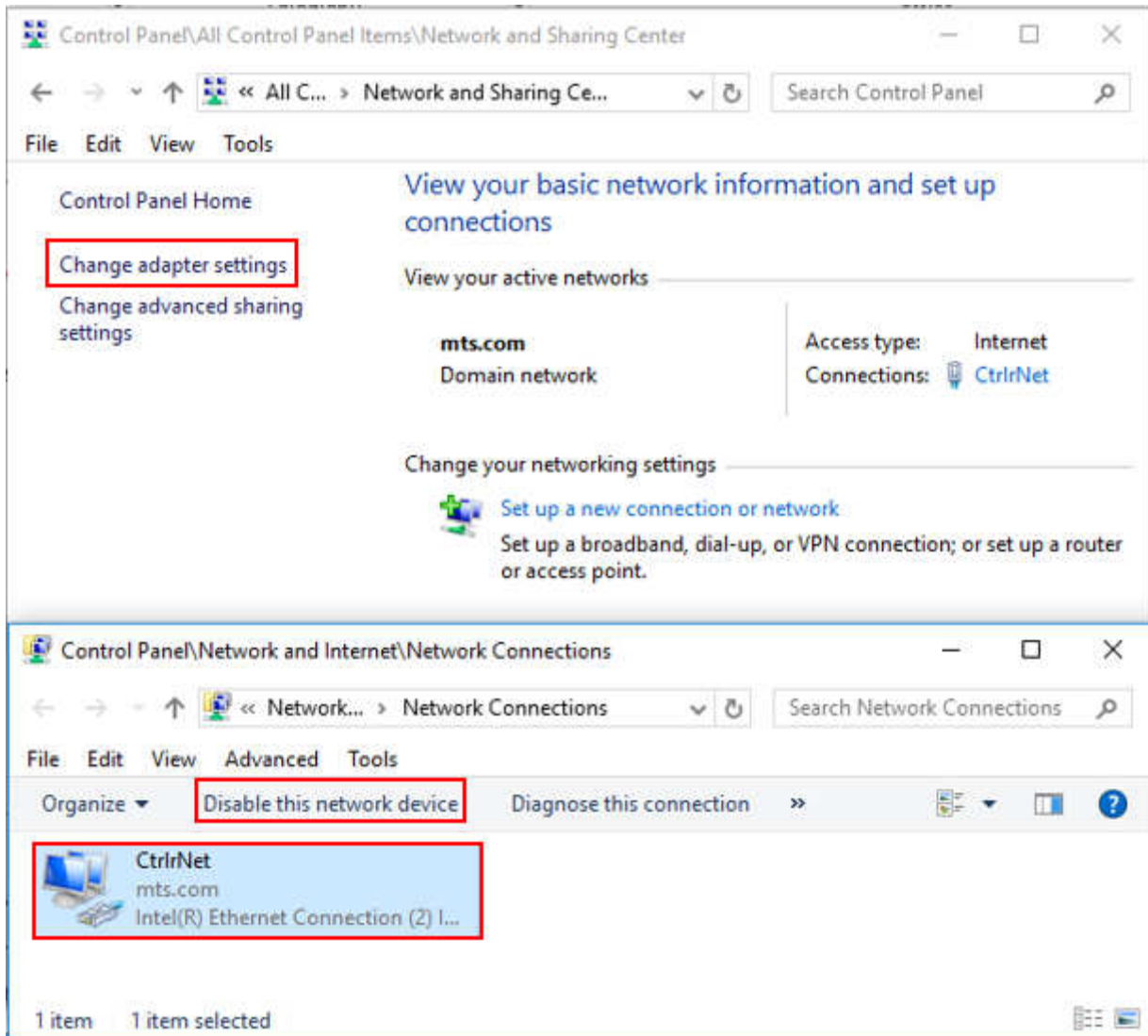


Figure 4 – Enabling and Changing the Adapter Name to CtrlrNet

## Configure the Adapter IP Address and define its Profile

Start > Control Panel > Network and Sharing Center > Change Adapter Settings > Right-click on Adapter > Status > Properties.

**Note:** You will need to connect to the controller and power it on for the network connection to be displayed. It may come and go as the controller reboots itself.

Check **Internet Protocol Version 4 (TCP/IPv4)** and uncheck everything else (Figure 5).

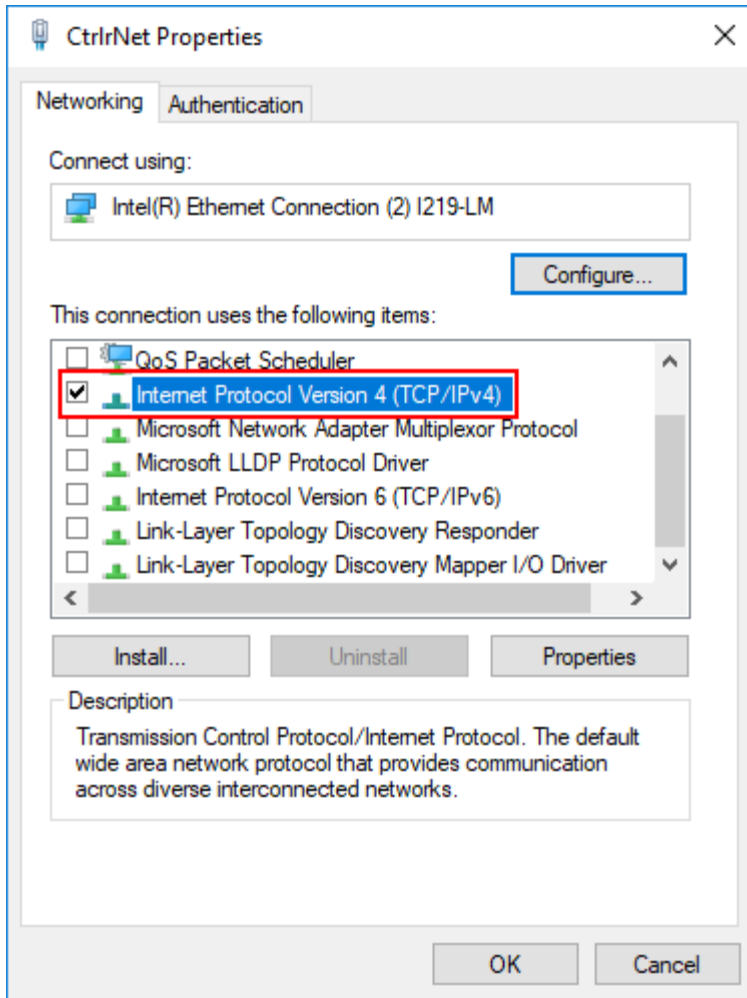


Figure 5 – Checking only Internet Protocol Version 4 (TCP/IPv4)

Highlight Internet Protocol Version 4 (TCP/IPv4) and click on Properties > Select **Use the following IP address:** > Enter **148.150.203.190** for the IP address and **255.255.255.0** for the Subnet mask (Figure 6). Exit all windows with OK or Close. If you are asked to validate TCP/IP settings, select Cancel; your settings will be saved.

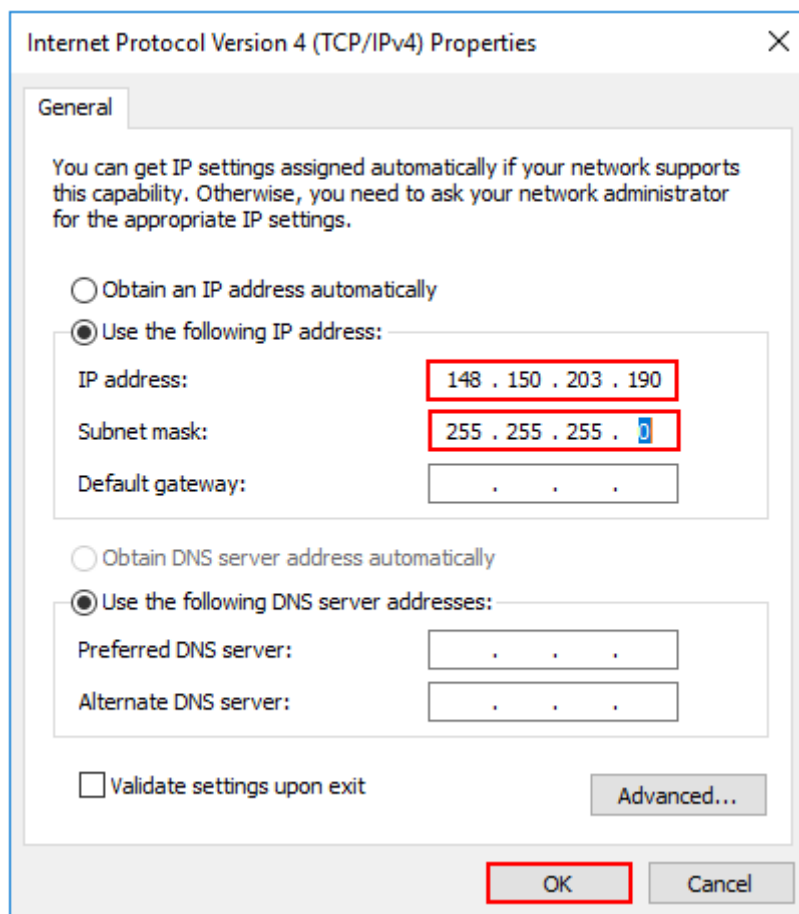


Figure 6 – Entering the IP address and Subnet mask

## Configure the Default FTP Settings (Done after the 793 Software Installation)

They can be configured by using the Test PC Configuration Utility. From a new PC that has never been configured, setup following the steps under Add FTP Publishing in Windows 10. However, to manually configure or to verify settings correct please use the steps under Manually Configuring the FTP Settings.

## Adding FTP Publishing In Windows 10

Type Administrative Tools into the Windows search bar to open it then go to Internet Information Services (IIS) Manager In the Left side expand the computer node > Expand Sites > Right Click on Default Website > Select Add FTP Publishing.

Enter IP Address **148.150.203.190** > Leave Port set to the default value of **21** > Verify that **Start FTP site automatically** is checked > Select **No SSL** > Select the Next Button (Figure 7).

**Note:** In Windows 7 **Allow SSL** is chosen instead. There is a problem in Windows 10 that requires **No SSL** to be chosen at this point in the setup which will **Allow SSL**.

The screenshot shows the 'Add FTP Site' dialog box with the 'Binding and SSL Settings' tab selected. The dialog has a title bar with a question mark and a close button. Below the title bar is a globe icon and the text 'Binding and SSL Settings'. The main area contains several sections:

- Binding:** A group box containing:
  - IP Address: A dropdown menu with '148.150.203.190' selected.
  - Port: A text box with '21' entered.
  - Enable Virtual Host Names:
  - Virtual Host (example: ftp.contoso.com): An empty text box.
- Start FTP site automatically
- SSL:** A group box containing:
  - No SSL
  - Allow SSL
  - Require SSL
  - SSL Certificate: A dropdown menu with 'Not Selected' selected, and 'Select...' and 'View...' buttons.

At the bottom of the dialog are four buttons: 'Previous', 'Next', 'Finish', and 'Cancel'. The 'Next' button is highlighted with a red border.

Figure 7 – Binding and SSL Settings

Check Anonymous and Basic Authentication > Select **Allow Access to All Users** from drop-down list > Check **Read** under Permissions. You can optionally check **Write** > Finish (Figure 8).

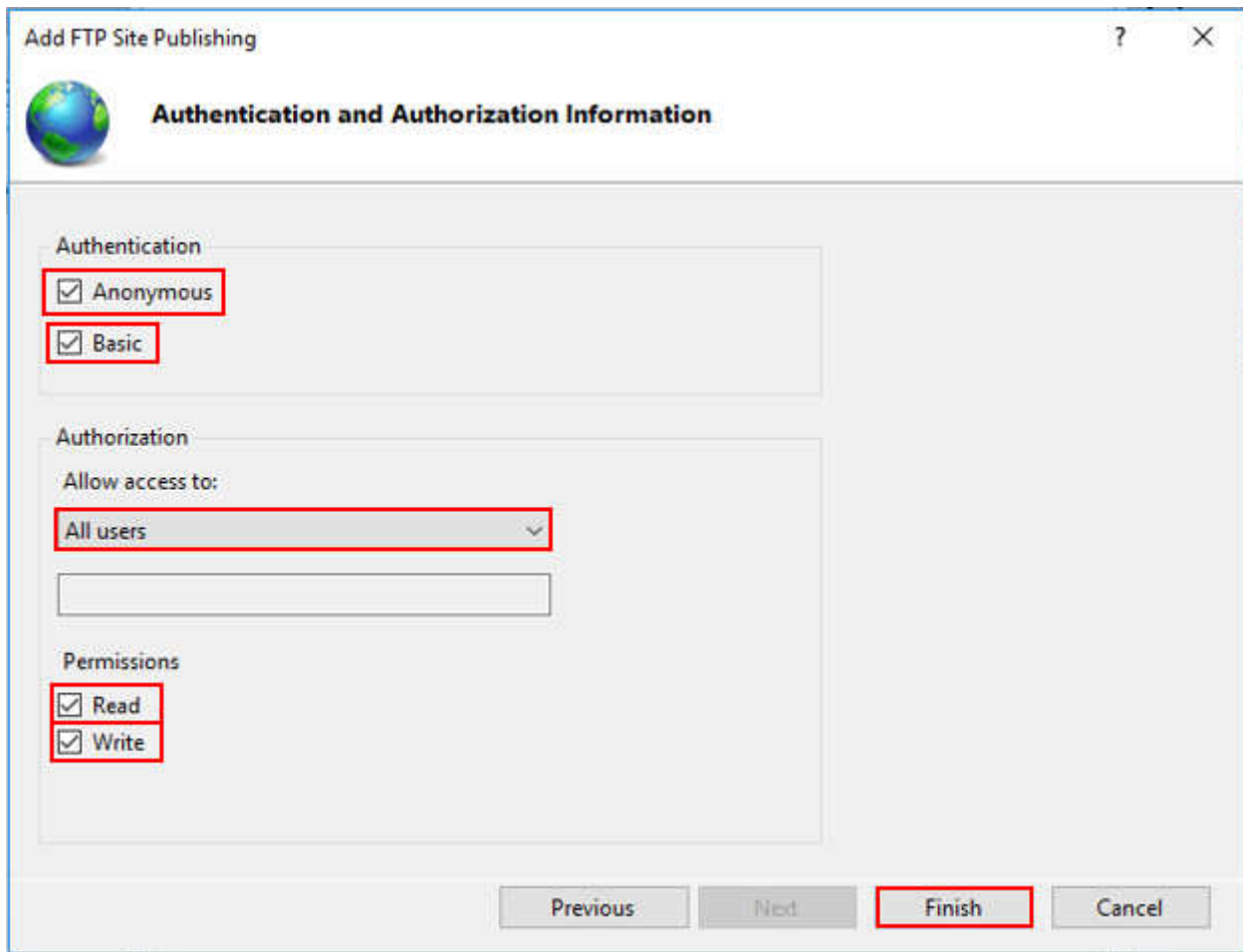


Figure 8 – Authentication and Authorization Information

## Manually Configuring the FTP Settings

Type Administrative Tools into the search bar to open it then go to Internet Information Services (IIS) Manager > In the Left side expand the computer node > Expand Sites > Left-Click on Default Website > Basic Settings (Figure 9).

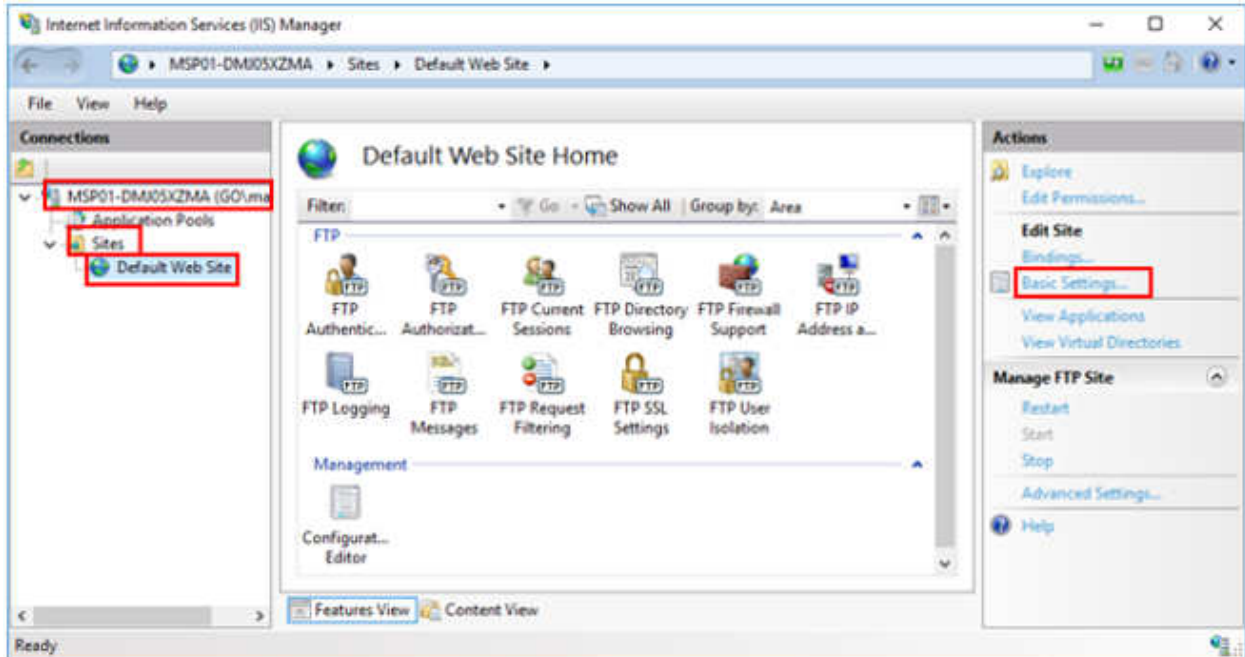


Figure 9 – FTP Basic Settings

Verify if your Physical Path is (Figure 10):

C:\Program Files (x86)\MTS 793\ntbin or C:\Program Files\MTS 793\ntbin.

64 bit operating systems will use C:\Program Files (x86)\MTS 793\ntbin as the default directory.

32 bit operating systems will use C:\Program Files\MTS 793\ntbin as the default directory.

**Caution:** Although most Windows 10 operating systems will be 64-bit and use the default directory C:\Program Files (x86)\MTS 793\ntbin, check both directories for the location of the ntbin file to verify the correct physical path to use. A user may have changed the directory when installing the software or you may have the 32-bit version of the operating system.



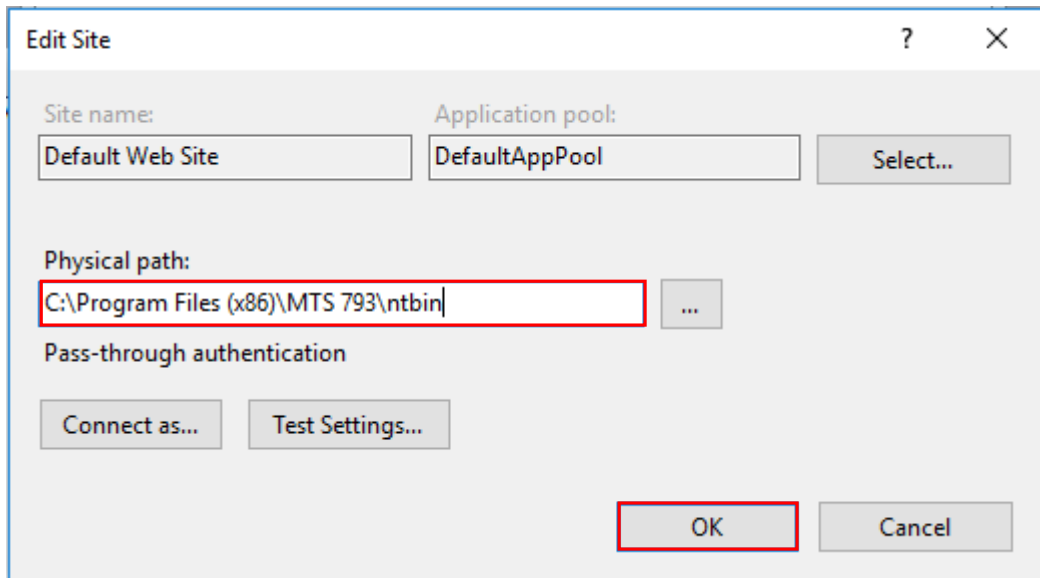


Figure 10 – Default Physical Path for Windows 10 64-bit Operating Systems

Right-click on Default Website > Manage FTP Site > Advanced Settings > Start Automatically should be **TRUE** (Figure 11).

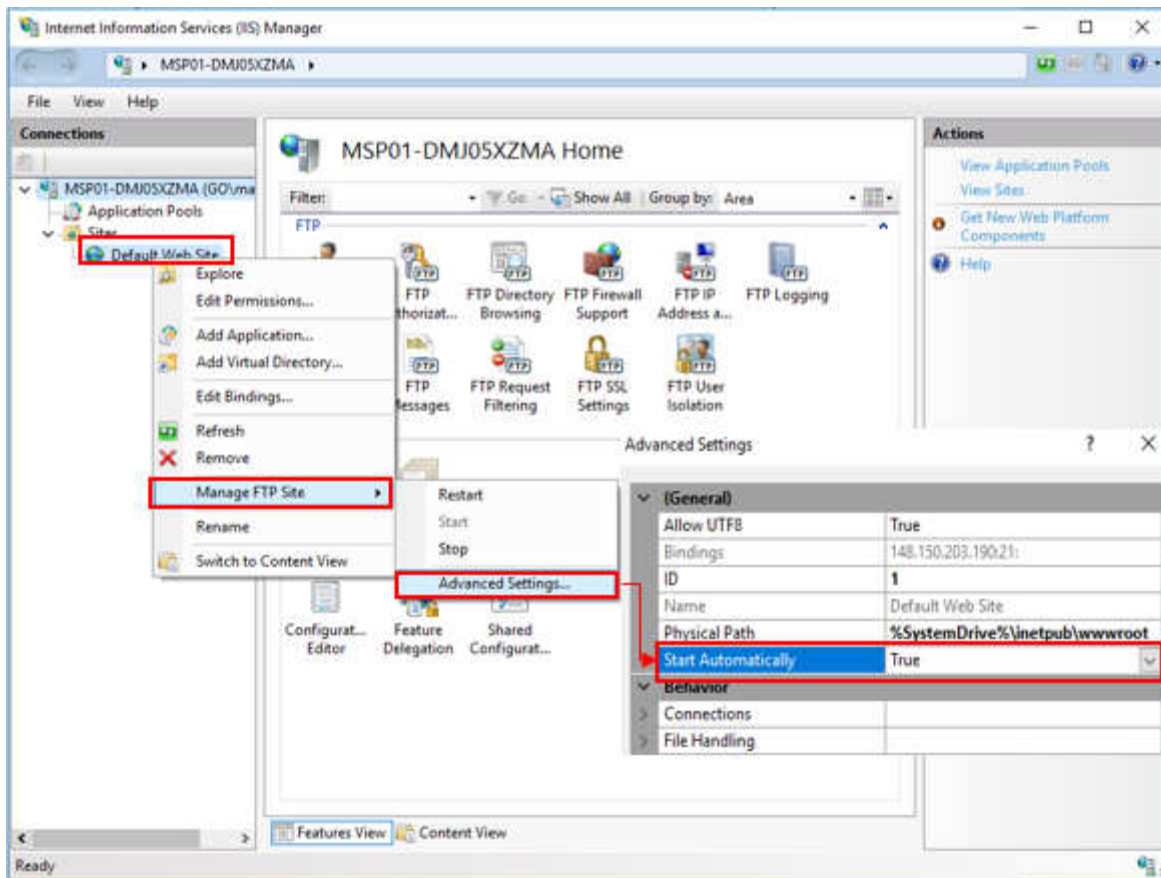


Figure 11 – Advanced Settings Window

Double-Click on FTP SSL Settings > Select **Allow SSL Connections** (Figure 12).

**Note:** In Windows 10 when adding FTP Publishing you may have had to select **No SSL** in order to complete adding FTP publishing. This is an anomaly with Windows 10 where selecting **Allow SSL** during the initial FTP setup does not work.

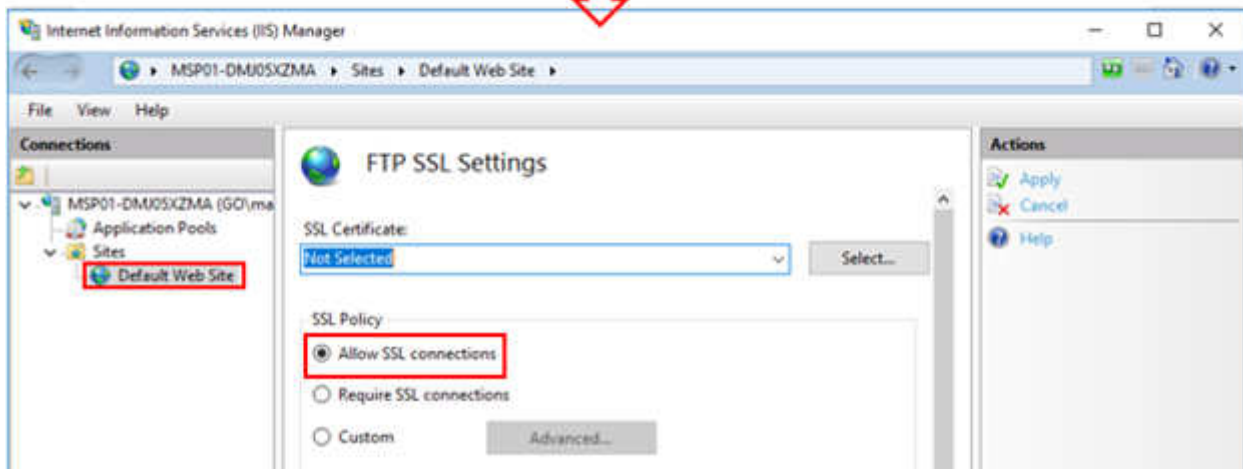
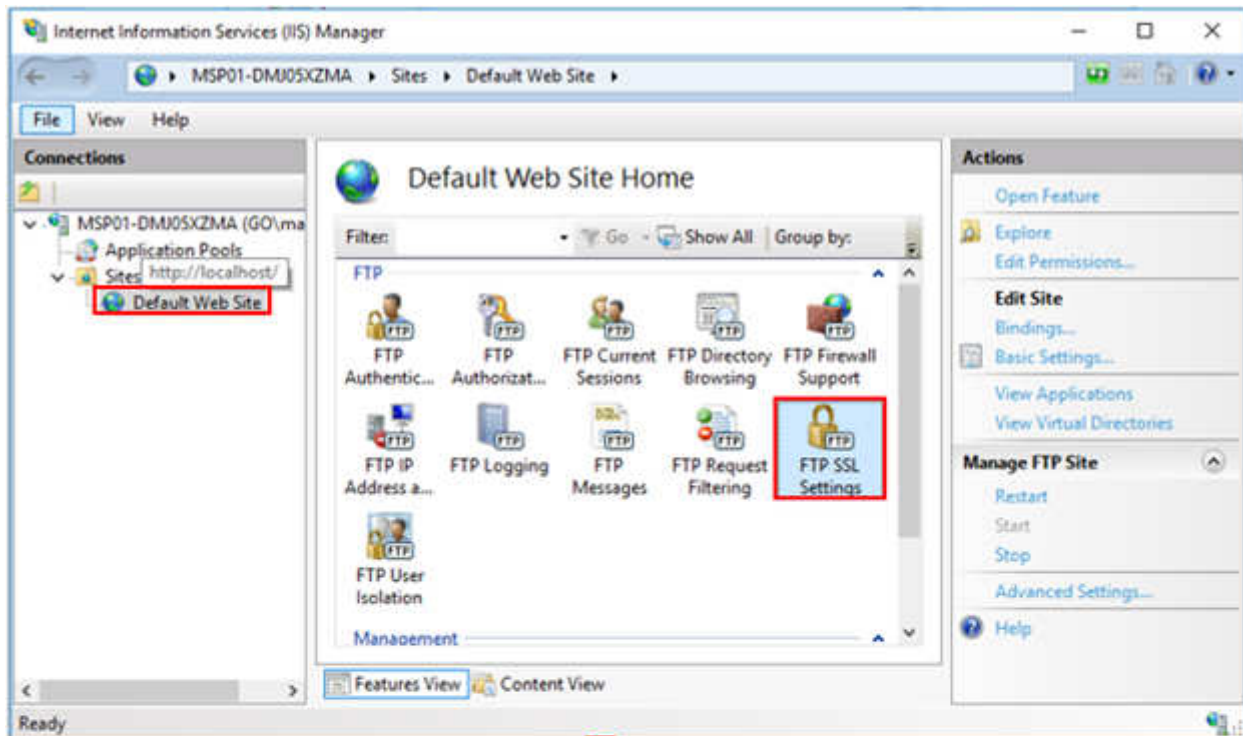


Figure 12 – Allow SSL Connections Should be Selected

Double-click on FTP Authentication and verify both **Anonymous Authentication** and **Basic Authentication** are enabled (Figure 13).

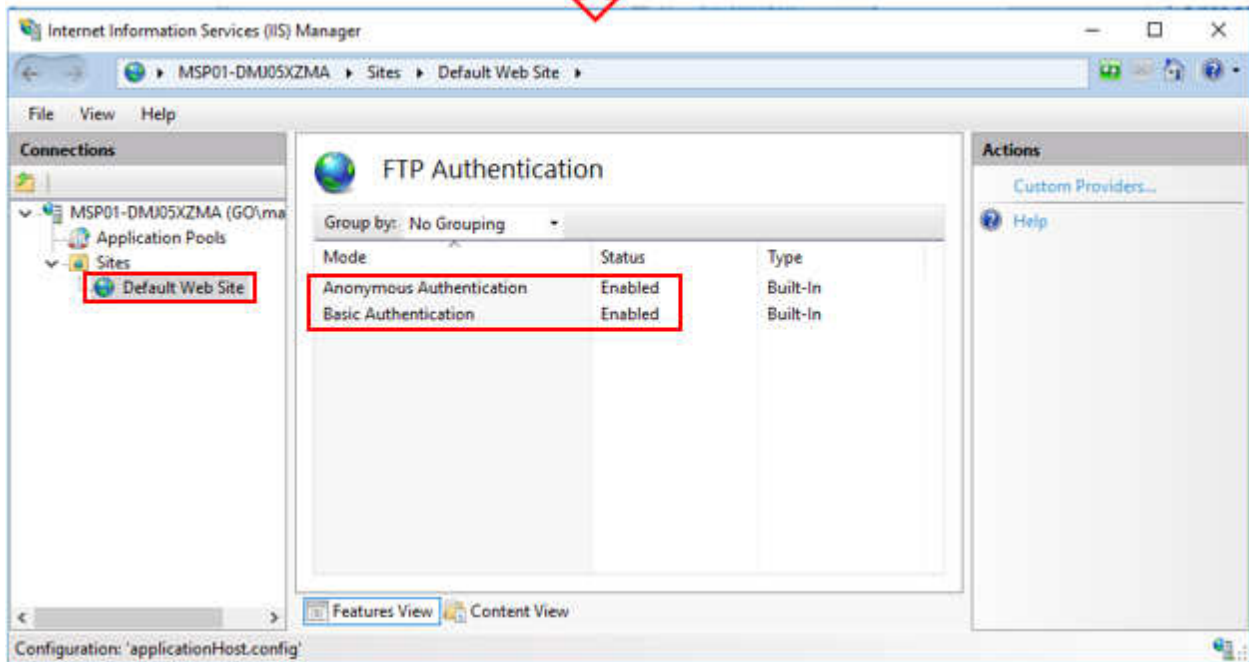
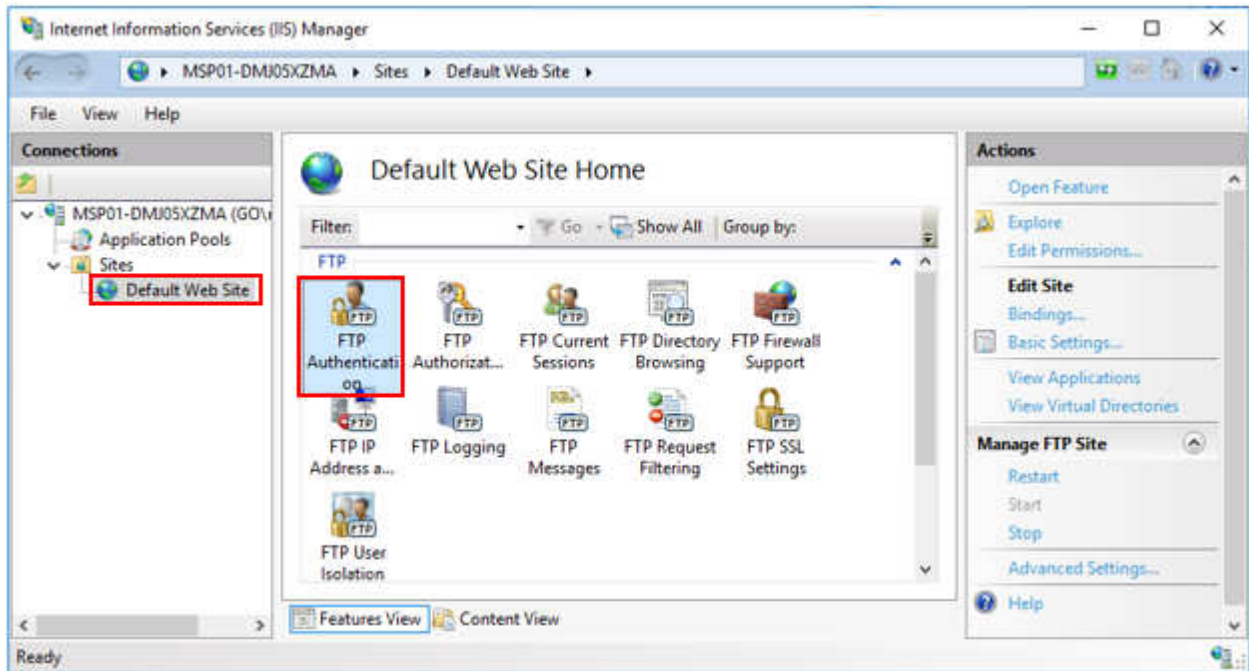


Figure 13– FTP Authentication Enabled

Double-click on FTP Authorization Rules and verify Allow **All Users** and Permissions **Read, Write** (Figure 14).

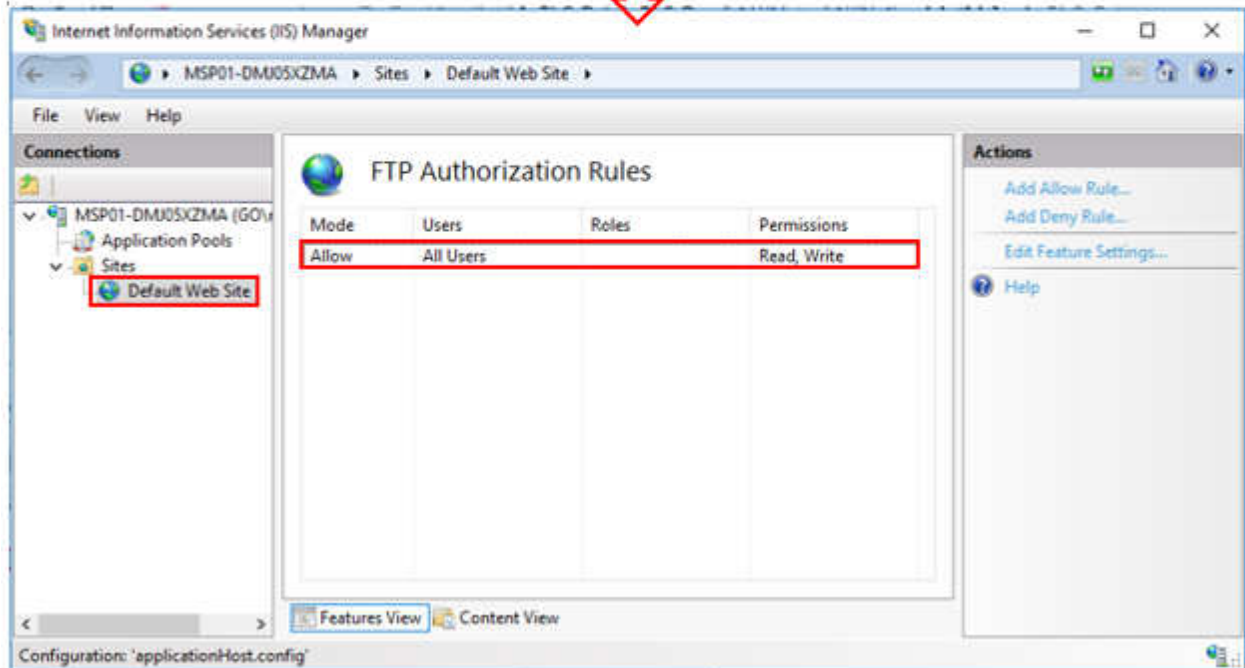
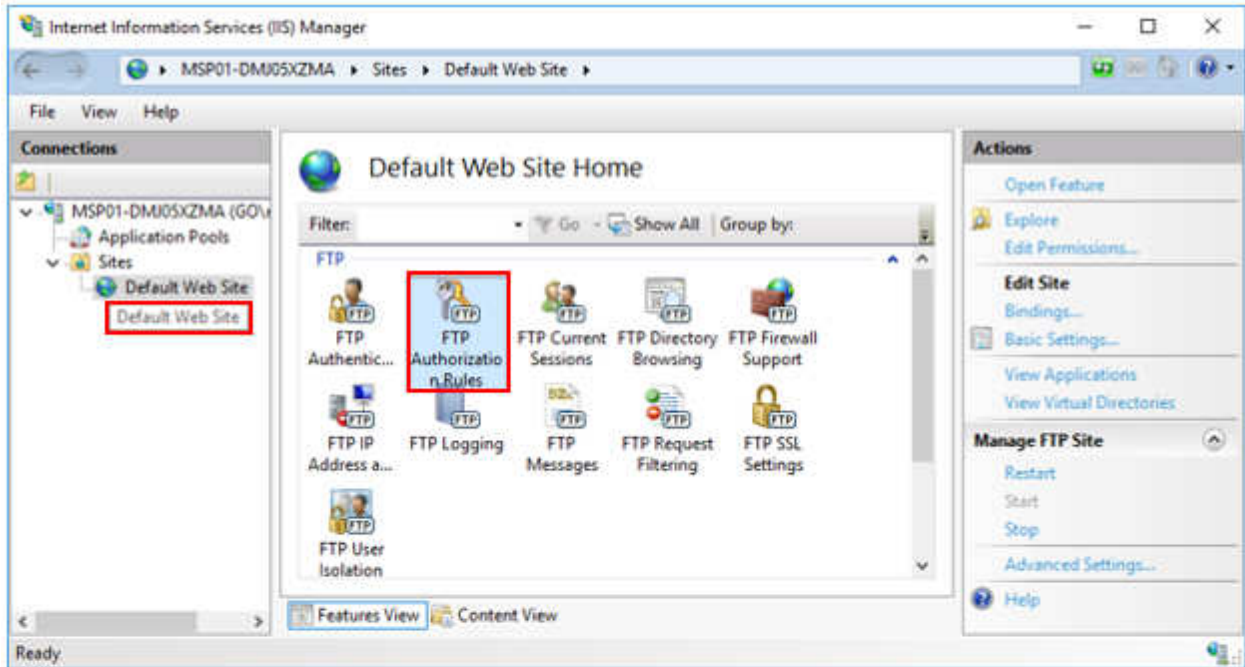


Figure 14 – FTP Authorization Rules

For 793 Version 5.8 or newer software continue with checking the binding section:

Right-click on Default Website > Edit Bindings > ftp > Edit (Figure 15).

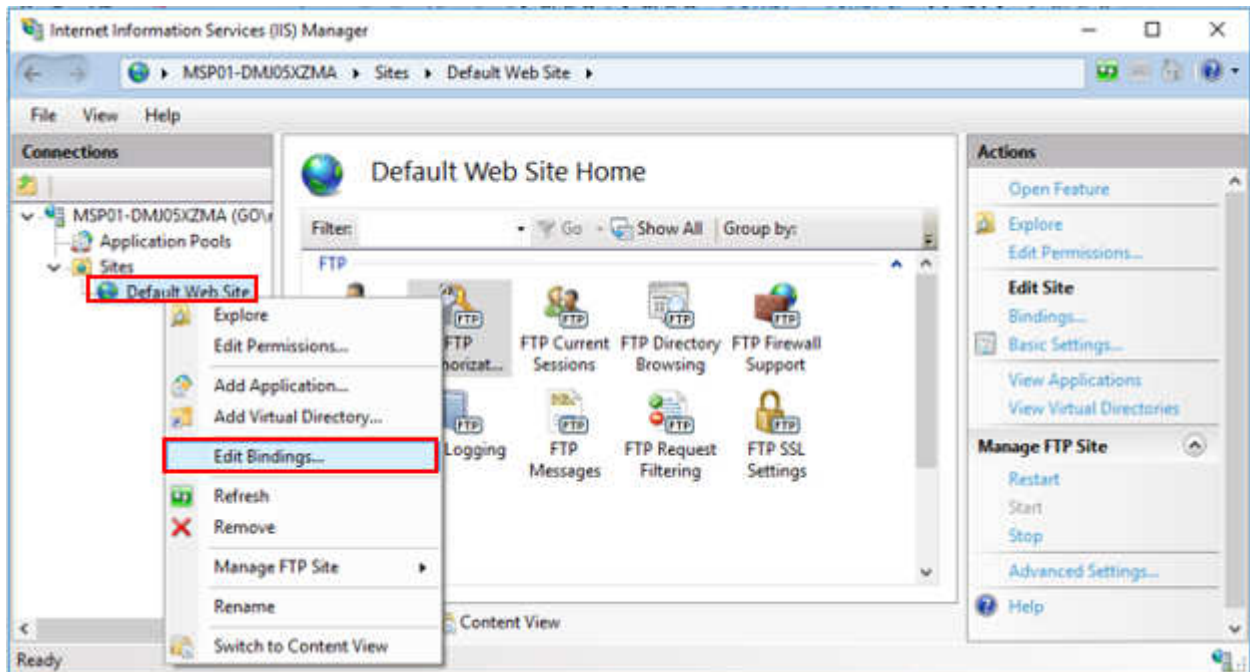


Figure 15 – Edit Bindings

Select IP Address 148.150.203.190 from the drop-down list. If it is not present click on any IP address then Edit to change it or Add to add it (Figure 16).

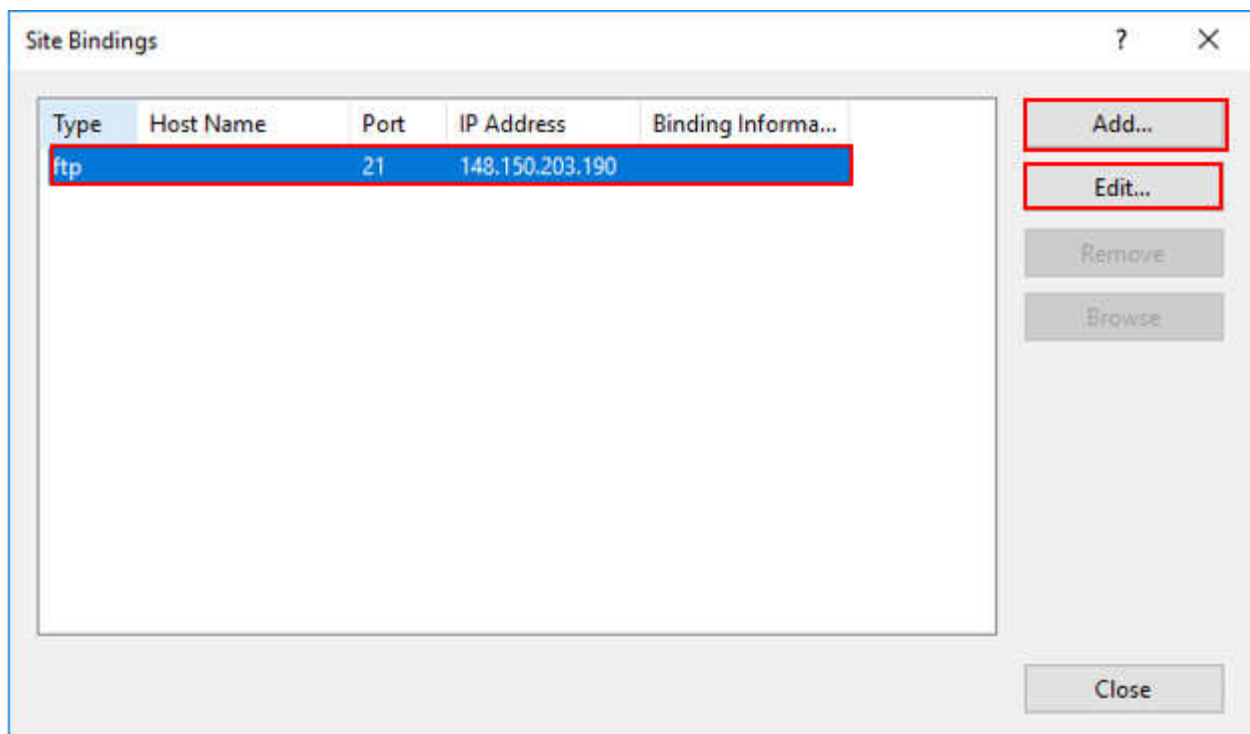


Figure 16 – Site Bindings

Verify the IP Address is 148.150.203.190 with Port 21 (Figure 17).

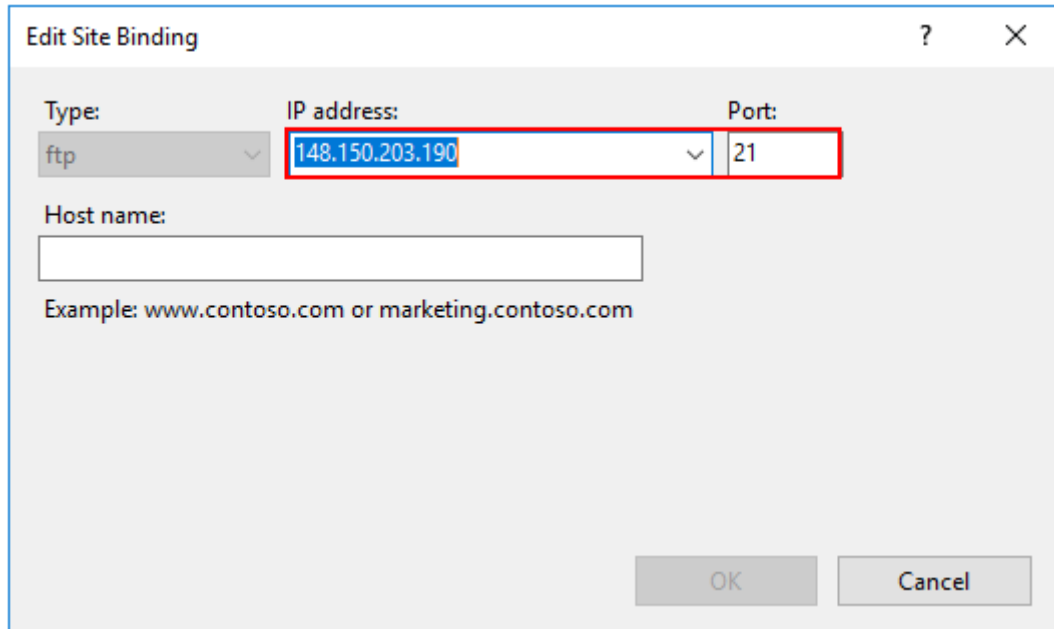


Figure 17 – Changing the IP address and Port Number

**Note:** If you do not see Internet Information Services Manager (IIS Manager) or have the ability to Add or Remove FTP Publishing during FTP setup, FTP Service may not be enabled. This typically is not the case if the PC was supplied by MTS or if the FTP service had been working unless the operating system was reinstalled and it was not enabled afterwards or you recently got a new PC outside of MTS.

## Disable the Firewall for Public Networks

- From the Control Panel select Windows Firewall.
- In the left pane click on Advanced Settings.
- In the center pane of this window, find the Overview section which lists the

Firewall Profiles.

- A. Click on Windows Firewall Properties at the bottom of this section.
- B. Go to the Public Profile tab.
- C. Turn off the Firewall for the Public Profile.
- D. Close this window by clicking OK.