

Quick Setup

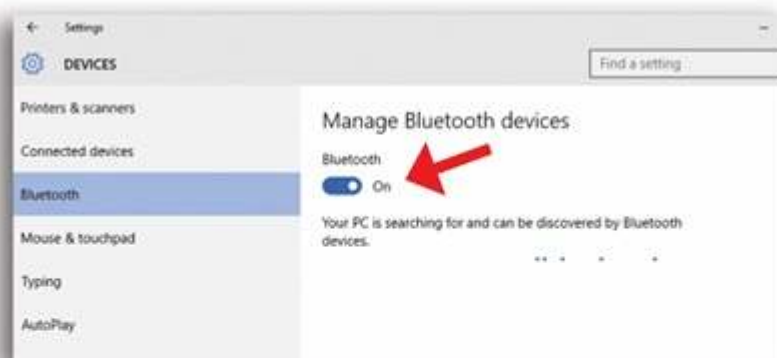


Instructions for pairing your bluetooth keyboard

1. Please make sure to charge your keyboard for 1 hour before you turn it on. Turn on the bluetooth keyboard and make it discoverable by pressing the connect button (marked by arrow).



2. On the tablet tap the windows button, go to settings > Devices > Bluetooth

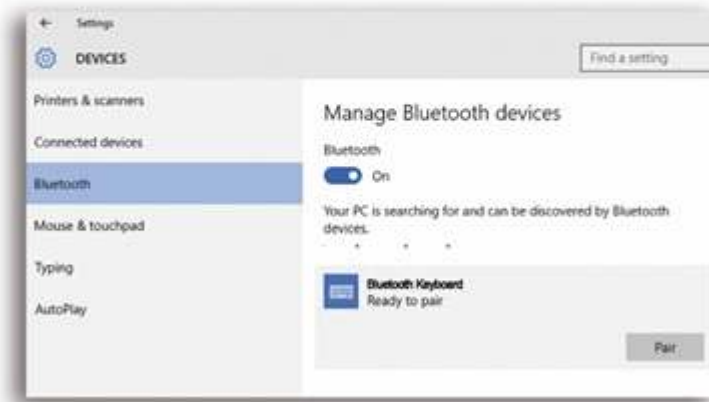


3. Make sure the tablet's Bluetooth is turned on (marked by arrow), then wait while windows searches for bluetooth devices.

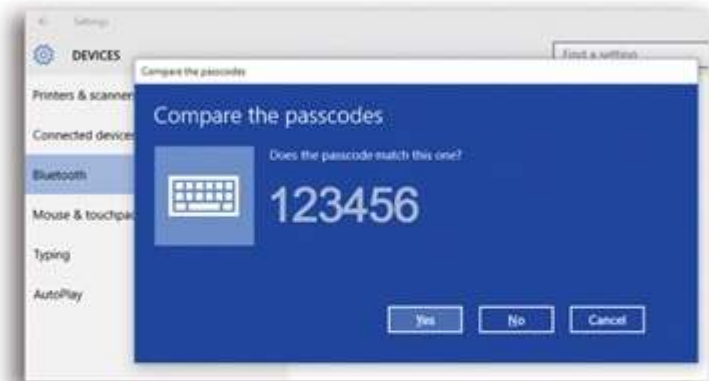
Quick Setup



4. Select Bluetooth 3.0 keyboard



5. Type the numeric code provided by the tablet into the keyboard and press enter/return. Please note that when typing in the password into the keyboard, you will not see the numbers you are typing on the tablet screen.



6. If the connection has timed out please start over. If all you see is a blank box and you don't see a numeric code, then the backup code is "0000" four zeroes. Type it into the keyboard and press enter.