

# Which type of account?

---

## Why create an account?

In order to identify who is submitting the registration(s), the information described in section 1 of the annexes 1, 2 and 6 of the Royal Decree is collected in an account. Creating an account gives you access to the registration tool and allows you to submit one or more registrations.

## Who can submit registrations?

According to Art 5 of the Royal Decree, the registration has to be submitted by the registrant, or on behalf of this person.

Article 6 of the Royal Decree describes who can furnish the information, asked in section 2 of the annexes 1 and 2 of the Royal Decree, when the substances produced in nanoparticulate state, as such or in mixtures, are delivered by a foreign supplier who is not responsible for the placing on the market.

This combination has led to the configuration of three types of accounts in the registration tool: you can either be the registrant himself, you can be a representative or you can be a foreign supplier. An overview of these types of accounts and the consequences is given in [the scheme](#) below.

However, the person placing the substances or mixtures on the market remains responsible for the registration.

## The registrant

The registrant who chooses to submit his own registrations, creates the account type of the registrant.

In this case, the registrant can indicate whether he has an identification number of the Crossroads Bank of Enterprises (CBE) and use this number to create his account. Using the CBE identification number has the advantage that a number of data asked will be retrieved from the Crossroads Bank of Enterprises. For example, the data from the different establishment units of the company will be retrieved as registered in the Crossroads Bank of Enterprises.

When the registrant does not have a CBE-number, he can enter the data manually.

Within the account type of the registrant, you are able to submit registrations for substances and mixtures and their annual updates.

## The representative

Each legal entity can represent the registrant, on condition that the representative is situated in the European Economic Area. It is strongly recommended that there is a written agreement between the represented and the representative, as the obligation to register remains the responsibility of the registrant.

As a representative you can represent more than one company. It is possible to add more than one represented company to this account. At the level of the registration of the substance or mixture, the representative can indicate for which represented company this registration is submitted.

It is important to note that the representative has immediate access to all the registrations for all the represented companies. It is not possible to create a selective access within one account.

It is not possible to use the CBE-identification number to create this type of account, even if the representative is a Belgian company with a CBE-identification number.

Within the account type of the representative, you are able to submit registrations for substances and mixtures and their annual updates.

## The foreign supplier – inverse registration

The foreign supplier does not place the substances in nanoparticulate state, as such or contained in a mixture, on the market. He transfers these products to the person(s) who place them on the market. This means that the registration by the foreign supplier is on a voluntary basis.

The foreign supplier can only register the technical details of the substances in nanoparticulate state (as described in section 2 of the annexes 1 and 2 of the Royal Decree). He can decide to do this, to help his customers who have to register. By doing so:

- the foreign supplier does not reveal the technical details to his customers
- the customers can use the registration number of the foreign supplier and use the option of a limited registration.

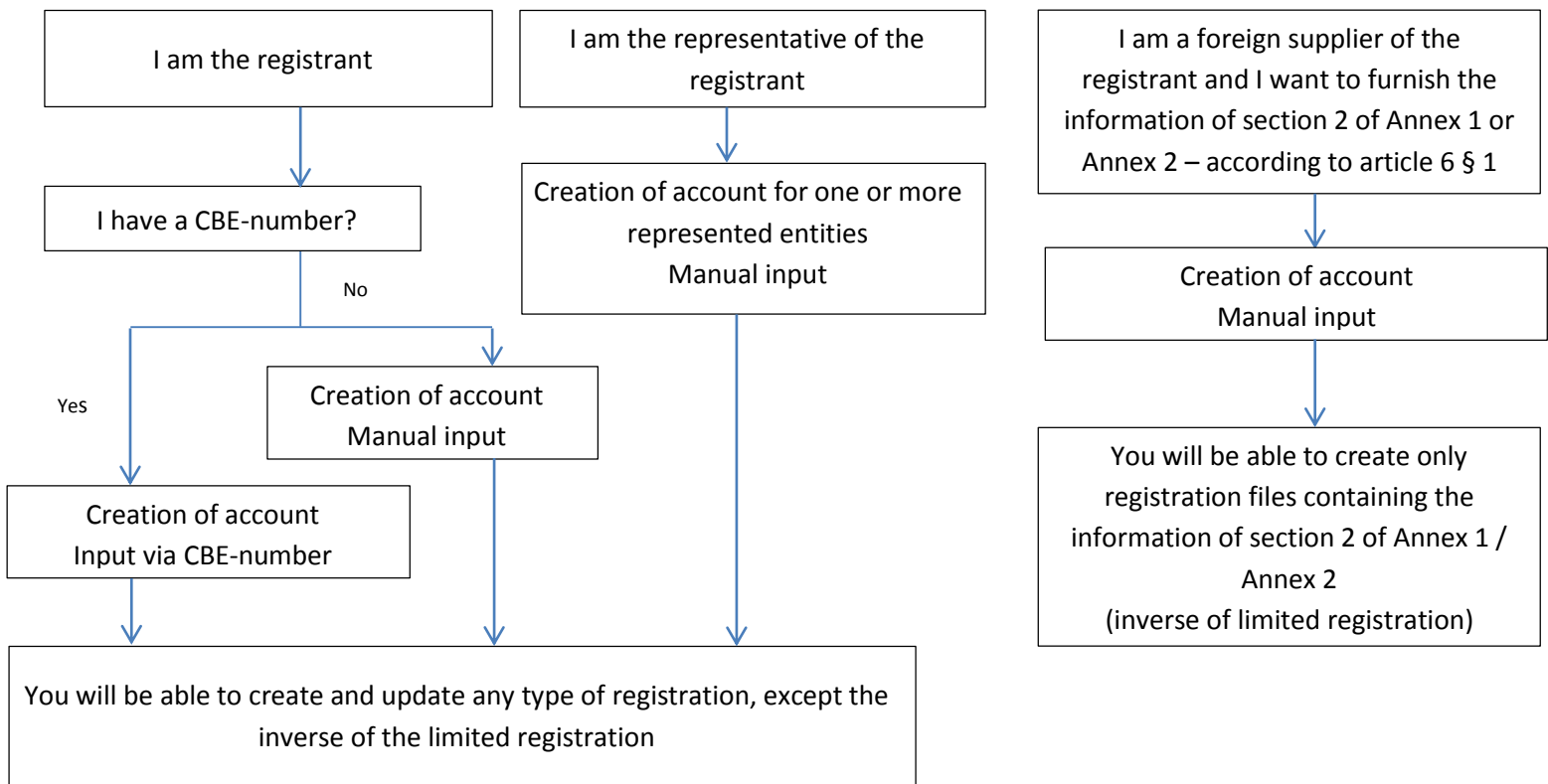
A limited registration (cfr. Art 8 of the Royal Decree) is a registration whereby the technical details on the substances in nanoparticulate state (as described in section 2 of the annexes 1 and 2 of the Royal Decree) are replaced by a previous registration number. The chemical name and formula however still need to be registered in a limited registration.

The registration submitted by the foreign supplier, containing only the information described in section 2 of the annexes 1 and 2, is called an inverse (of the limited) registration.

For the creation of this type of account, the data are entered manually.

Within the account type of the foreign representative, you are only able to submit inverse registrations.  
No annual update has to be done for this type of registration.

## Scheme account types



*More info about the creation of an account?*

See FAQ A.S1.a at [www.nanoregistration.be](http://www.nanoregistration.be)

*More info about the registrant?*

See FAQ A.S1.b at [www.nanoregistration.be](http://www.nanoregistration.be)

*More info about the representative?*

See FAQ 6.1.a at [www.nanoregistration.be](http://www.nanoregistration.be)

*More info about the foreign supplier?*

See FAQ 6.a, FAQ 6.1.b, FAQ A.S2.a at [www.nanoregistration.be](http://www.nanoregistration.be)



## I have to register. Where can I find more information?

On the website [www.nanoregistration.be](http://www.nanoregistration.be), you can find more guidance documents:

- Who has to register
- When do I have to register
- Different types of registrations
- Creation of an account: which information has to be provided
- Registrations: which information has to be provided
- The Royal Decree
- FAQs
- The link to the registration tool

In case of questions, contact the helpdesk via [info@nanoregistration.be](mailto:info@nanoregistration.be)