

COUNTAX™

SERVICE BULLETIN

15-T4-71

DATE: 10\07\2015

MODELS CONCERNED: All MK4 B, C, F & T Series Tractors & XRD Decks.

CONCERN: In certain operating conditions it may be possible for the deck drive belt to jump off the pulleys due to the front tensioner becoming disengaged.

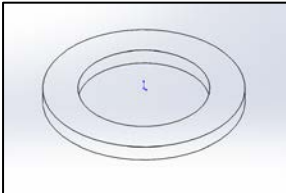
If this does occur then please carry out the following changes. The areas that need to be changed are as follows:-

1. Addition of shims to deck input pulley.
2. Replace sleeve on deck tension lever.

Kit # = 50100078

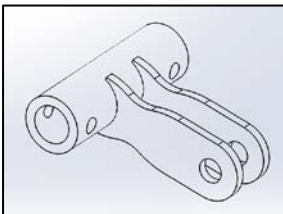
Contents:

2 x 549011500 Pulley Shim



1 x 329651000

Tension Sleeve (The new version is identified by the notches on both sides as shown.)



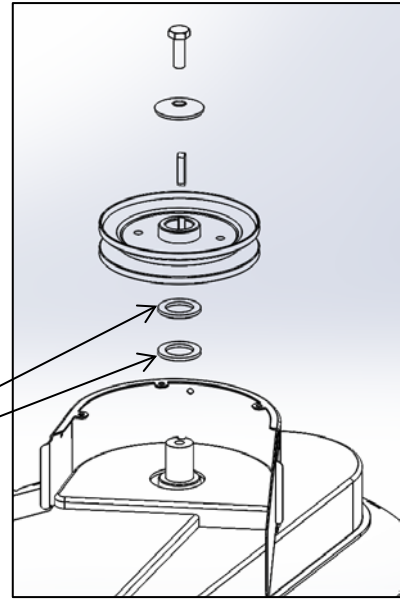
Step 1

Adding shim to the deck input pulley. Remove deck from the machine following the instructions in the operator manual and place in a safe working position.

Deck Input Pulley:

1. Remove M10 bolt & dome washer.
2. Slide off pulley & key.
3. Place new shims over the top of the shaft.
4. Put back pulley, key, dome washer and re-tighten M10 fixing bolt to the correct torque.

Additional Shim x 2
549011500



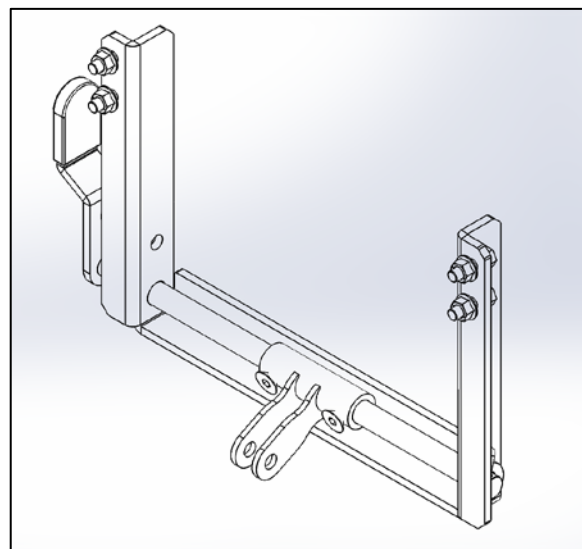
Step 2

Remove the existing tension handle sleeve and replace with the revised version. Make sure the machine has fully cooled down before attempting to replace the tension sleeve due to the close proximity of the exhaust muffler.

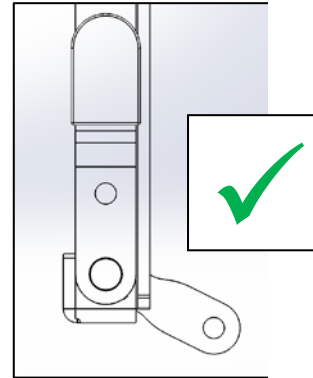
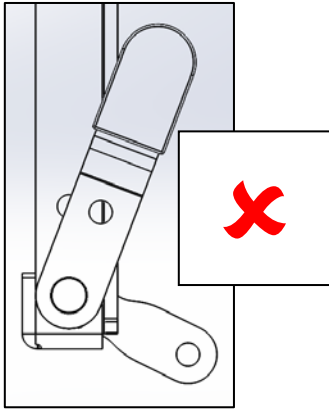
Tension Sleeve:

1. Loosen & remove the 2 off screws holding the sleeve to the handle shaft.
2. Remove clip & washer from non-handle end of shaft.
3. Slide the handle assembly out of the support frame until the existing sleeve can be removed & replace with the new version.
4. Slide handle back through the support frame hole and replace the washer & clip.
5. Line up the sleeve holes with the holes in the handle taking note of orientation as below.
6. Refit screws with Loctite 268 or equivalent & ensure the handle rotates freely.
7. The deck can now be refitted to the tractor using the existing tension bar.

8. Please check the condition of the belt. If it has come off during use then it should be replaced as it could be damaged.



Please note that the sleeve plates are offset to the holes. Ensure that when it is in the tension position the alignment is per the RH image shown below.



If you have any questions or need further technical help please contact the Countax customer service department.

Bulletin Revision Log

No.	Revision Date	Reason / Comments
A	10.07.15	Bulletin release