



Woody Ingest User Guide

Introduction.....	1
1. Technical requirements	2
2. Installation	2
2.1. Architecture	2
2.2. Installing the application.....	2
2.3. First start.....	3
3. Profiles tab.....	4
3.1. Destinations setting.....	5
3.2. Conditional transcoding rules	6
3.3. Naming rules	7
3.4. Metadata	8
4. Setup tab.....	9
4.1. Global.....	9
4.2. Creation and configuration of watchfolders	9
4.3. Creation of ingest streams	12
5. Manager tab.....	13
6. Monitoring and Logs.....	14
6.1. Monitoring tab	14
6.2. Logs tab.....	15
7. Display of HTML pages.....	15
8. WebServices.....	15

Introduction

Woody Ingest is an application that allows automated acquisition of media and makes them available into the Avid ISIS / Interplay system.

The process is done 3 steps:

- Files detection and analysis
- Transcoding (if necessary)
- Check in into Interplay

More than ten watchfolders can be simultaneously scanned. For each watchfolder, you can specify:

- The folders path to scan
- The Interplay folder where the assets will be placed
- The subfolders creation rule
- The assets naming rule

The application can also be controlled by WebServices (see § 8).

1. Technical requirements

- Windows 7 – 64 bits or Windows 8 on the same network as Interplay Engine, Interplay WebServices and ISIS shared storage.
- Web browser compatible html5 (Google Chrome is required)
- Interplay Engine > v 1.3
- Interplay WebServices > v 2.0

2. Installation

2.1. Architecture

- **Woody Ingest** can be installed on the same server as Interplay WebServices.
- The server on which **Woody Ingest** is installed must have rights to read and write on the path folders where the media will be detected.
- The user configured in the application must have rights to write on Interplay destination folders.

2.2. Installing the application

→ Run the file [WoodyIngest.msi](#) and follow the on screen instructions.

① *If the Windows firewall is activated, one or more warnings messages ask to authorize the installation.*

A shortcut is created on the desktop



Woody Ingest

- The software is installed in
[C:\Program Files \(x86\)\Woody Technologies\Woody Ingest](#)
- The configuration logs files are located in
[C:\Program Data\Woody Technologies\Woody Ingest](#)
- A Windows service named *WoodyIngest* is installed. It will automatically start at the end of the installation.

2.3. First start

→ Double click on the icon on the desktop



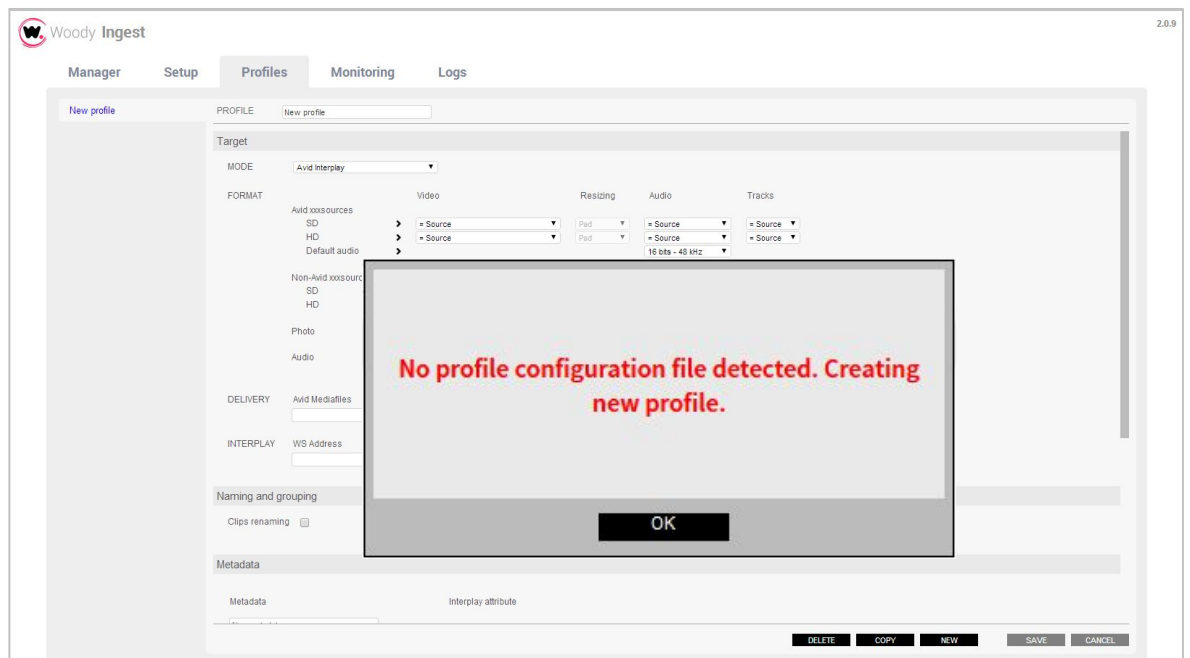
Woody Ingest

or in the Start menu / [Programs/Woody Technologies/Woody Ingest](#)

↳ The html page dedicated to [Woody Ingest](#) administration opens in your browser. The 5 tabs are described in the next chapters.

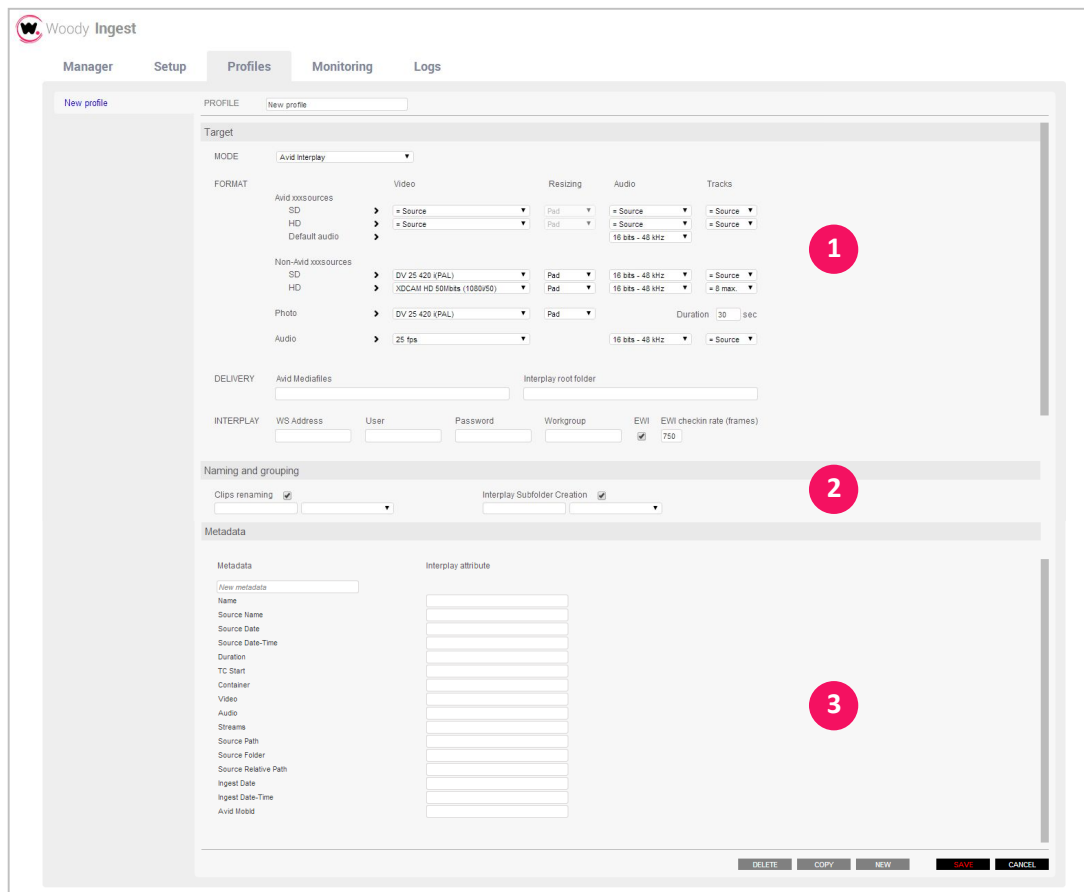
① *If the page does not open, see the safety rules of your browser (§ 7).*

At the first start, you have to create the [Woody Ingest](#) profiles (description of features and commands on the next page).



3. Profiles tab

Profiles defined here will be assigned to the watchfolders configured later (see § 4). For each profile, you can configure:



- 1 **Target:** transcoding formats, if needed, and destination (location and folder).
- 2 **Naming and grouping:** naming rules for clips and for creation of destination subfolders.
- 3 **Metadata:** mapping between metadata and the Interplay attributes or target data.

- To create a new Profil: click on **New** button or from a **Copy** of an existing one
- Rename the new profile
- Configure your profiles

3.1. Destinations setting 1

Two ingest modes are proposed:



- **Avid Interplay** mode

Path of the ISIS destination folder
Form: \\server\workspace\folder

Interplay destination folder
Form: folder/subfolder

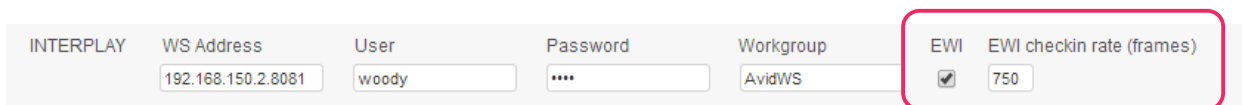
DELIVERY	Avid Mediafiles				Interplay root folder
	<input type="text" value="\\server-isis\workspace\Avid Mediafiles"/>				<input type="text" value="Incoming Media/News"/>
INTERPLAY	WS Address	User	Password	Workgroup	
	<input type="text" value="192.168.150.2.8081"/>	<input type="text" value="woody"/>	<input type="text" value="...."/>	<input type="text" value="AvidWS"/>	

*Form: address IP:port
or UNC access path*

Settings of Interplay WebServices

The Interplay root folder (more often *Incoming Media* or *Catalogs*) must exist and will not be created by the application.

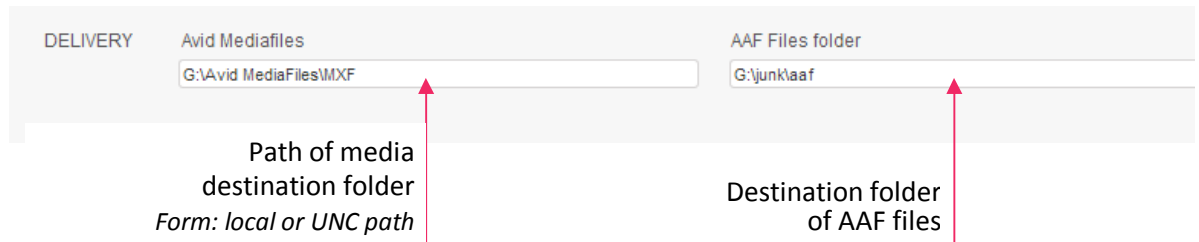
However, **Woody Ingest** creates the subfolder specified (in our example *News*) where the clips will be checked in.



If you enable the option **Edit While Ingest**, you can adjust the frequency at which the clip is refreshed in the Interplay folder.

- **Avid Mediafiles + aaf** mode, the principle is the same without check in into Interplay.

MXF files are deposited on any storage and an AAF file is created for each clip. With this AAF file you can easily and instantly import the clip in your Avid editing tool.



- ① *If you choose **Avid Mediafiles + aaf** mode, the settings related to Interplay do not appear in the other parts of the configuration interface.*

3.2. Conditional transcoding rules 1

Depending on the source format of the clips, you can define the production format in which the clips will be transcoded, if needed, or wrapped by **Woody in2it**.

- ① *The "Same as source" (= Source) option is only available for the formats supported by Avid (Avid sources).*

In case of source files rewrap non-compatible with Avid or different from your target format, you can specify the audio settings.

A dropdown menu with the following options: '= Source', '= Source', 'DV 25 420 i(PAL)', 'DV 25 411 i(PAL)', 'DV 50 i(PAL)', 'XDCAM HD 50Mbps (1080i/50)', 'XDCAM HD 50Mbps (1080p/25)', 'DNxHD 120 (HD1080i)', 'DNxHD 185 (HD1080i)', and 'Audio only'. The first two options are highlighted in blue.

Resizing rules for non 16/9 sources

FORMAT	Video	Resizing	Audio	Tracks
Avid sources				
SD	> = Source	Pad	= Source	= Source
HD	> = Source	Pad	= Source	= Source
Default audio				
			16 bits - 48 kHz	
Non-Avid sources				
SD	> DV 25 420 i(PAL)	Pad	16 bits - 48 kHz	= Source
HD	> XDCAM HD 50Mbps (1080i/50)	Pad	16 bits - 48 kHz	= 8 max.

Audio encoding settings

- 💡 **Ensure the audio settings are consistent with the selected video formats.**

You can also configure the processing of fixed image files (photos, graphics) and audio files.

Enter the frame rate per second even for an audio file, to be able to integrate your clip to your Avid project.

Set the duration of the generated video clip from a fixed frame (graphic or photo files).

3.3. Naming rules 2

- The clips renaming rules

The clips name is built with metadata coming from the source file and customized data (see next page) and separator characters.

- In [Avid Mediafiles + aaf](#) mode the creation and the name of the Aaf subfolder defined in the same way.

Characters / \ : * ? " < > | % & cannot be used as separators.

- In **Avid Interplay** mode, the folders naming rule allows to dynamically create a folder tree from the destination folder specified in the part **Target** (in our example from *Incoming Media / News* – see § 3.1).

→ Enter a **/** as a separator at the level where you want to create a subfolder.

In our example, the folder tree will be:

Incoming Media/News

> National

>> Source Folder – Ingest Date

Source Name – Source date 001

Source Name – Source date 002

3.4. Metadata 3

This section allows:

- to create customized metadata whose value will be available in the naming rules.

Metadata	Interplay attribute	
New metadata	National	X
Name	Name	
Source Name	Source name	
Source Date		
Source Date-Time		
Source Path		
Source Folder		
Source Relative Path		
Ingest Date		
Ingest Date-Time		
Avid MobId		

- to link specific Interplay attributes with the metadata

→ Save the profile configuration

It is impossible to delete a profile used by a watchfolder (see § 4.2).

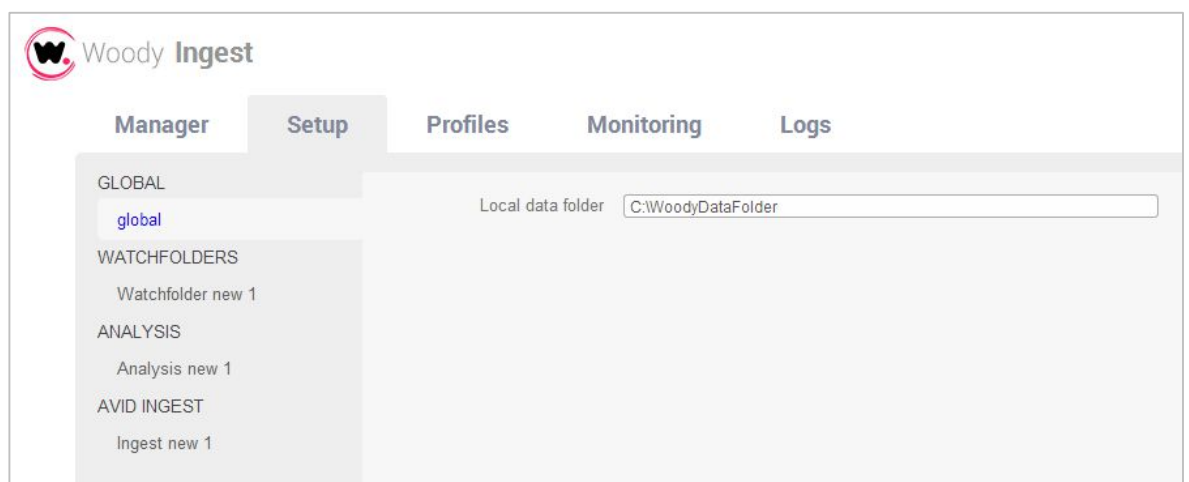
4. Setup tab

This tab is accessible when all components are stopped in the [Manager](#) (see § 5). It allows to:

- define the global configuration of the [Woody in2it](#)
- create or change watchfolders and their settings
- add or delete ingest flows

4.1. Global

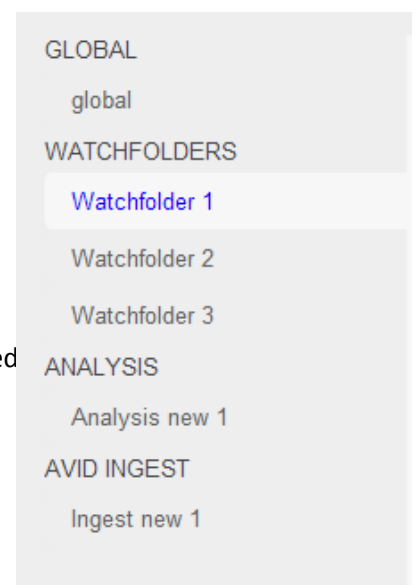
Local data folder: In this field, specify the folder in which you want to copy temporarily the Aaf files if they are detected in ftp or on a remote server.



4.2. Creation and configuration of watchfolders

→ Select a [Watchfolder](#) on the left, click on the button [New](#) to create a new watchfolder

or from a [Copy](#) of a watchfolder already configured



This is the folder scanned by [Woody Ingest](#).

For each watchfolder you have to specify:

Name	<input type="text" value="Watchfolder 1"/>	Autostart <input checked="" type="checkbox"/>
Ingest Profile	<input type="text" value="Profil 1"/>	
Watch Timer	<input type="text" value="5"/> sec.	
Safe usage	<input type="text" value="30"/> sec.	
Files extensions filter	<input type="text" value="*"/>	
Subfolders depth - min	<input type="text" value="0"/> - max <input type="text" value="0"/>	
Protocol	<input type="text" value="SMB"/>	

- **Name** It is the watchfolder login that will be used in pages Manager, Monitoring and Logs.
- **Ingest Profile** Assign one of the profiles previously created (Profiles tab- see §3). The profile settings will be applied to the files detected in this watchfolder.
- **Watch Timer** Interval in seconds between two detections.
- **Safe Usage** Interval in seconds between the time the file has stopped growing, and the time when the process should begin.
- **Files extensions filter** Extensions of the files you want to exclude from the ingest.
- **Subfolder depth** It means the folder tree levels in which the application will scan the files to process.
Level 0 corresponds to the watchfolder path, the other levels correspond to prospective subfolders.


```

graph TD
  A[niveau 0] --> B[niveau 1]
  B --> C[niveau 2]
  
```

The maximum is equal, at least, to the minimum + 1
- **Protocol** The protocol used to reach the watchfolder (SMB, FTP, SFTP)
- **Autostart** The option determines if the watchfolder will automatically start at the application launch.

- Protocole SMB

The local or UNC path of the watchfolder
Form: C:\local address
or UNC path

Protocol

Watchfolder

Local copy

If the option is checked, the file is copied on the local workstation before being processed in the previously defined folder ([Local data folder](#)) under menu [Global](#).

- Protocole FTP

Remote server path
Form: ftp://address

Protocol

Host

User

Password

Distant folder

Port

If not filled, by default port .21

Folder of remote server in which you should look
Form: Folder/Subfolder

- Protocole SFTP

Protocol

Host

User

Password

Distant folder

Certificate file

Port

If not filled, by default port .22

This is the safety certificate which is a file extension.ppk
Form: UNC path

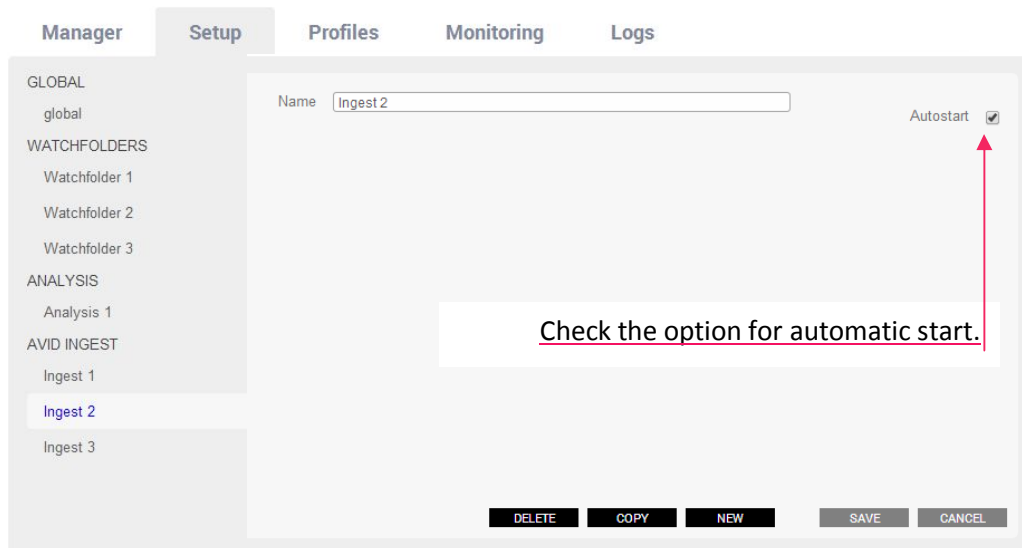
→ Save your configuration.

① You do not have to act on the analysis scripts of the files Analysis. These will be automatically started and tracked in the Monitoring.

4.3. Creation of ingest streams

This is the number of ingest streams. You can create as many as necessary, subject to the performance of your system.

At the first opening, the application automatically creates a first ingest engine. It is possible for you to create new ones and delete some.



Then, you can rename each ingest script, this is the login that will be used in the [Manager](#), [Monitoring](#) and [Logs](#) tabs.

→ [Save](#) your changes.

 **After the creation of new engines ingest, Woody Ingest has to be restarted in the Manager tab (see next page).**

5. Manager tab

It's the management of the different components of **Woody Ingest**. There you will find the status of the different watchfolders and ingest scripts you have defined previously in the Setup tab.

- The first line concerns all the application components.

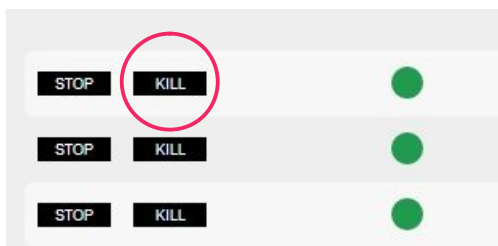
Woody Ingest 2.2.0

Manager	Setup	Profiles	Monitoring	Logs
Status	Script Name	Name	Autostart	Errors
START STOP ●		Woody Ingest	✓	RESET
STOP ●	"Analysis"	Analysis	✓	0
STOP ●	"Ingest 1"	ingest 1	✓	0
STOP ●	"Ingest 2"	ingest 2	✓	0
START ●	"Ingest 3"	ingest 3		0
STOP ●	"Thumbnails"	Thumbnails	✓	0
STOP ●	"Watchfolder 1"	Watchfolder 1	✓	0
STOP ●	"Watchfolder 2"	Watchfolder 2	✓	0
START ●	"Watchfolder 3"	Watchfolder 3		0

- All listed and configured **Autostart** scripts are automatically started (green indicator). Green indicators are flashing when scripts work.
- When stopping a ingest script (grey indicator), **Woody Ingest** will complete its current task (scan / analysis/ ingest / check in) until the end of the process.

① *By default the Stop button is visible when the script runs, the button Start appears when the script is stopped.*

If necessary, the shortcut **Alt + A** (for Administrators) shows for each script, a **KILL** button. It allows the forced stop of scripts.



The script immediately stops in spite of current actions.

① *Shortcut **Alt + U** to come back to User mode.*

💡 **No log of the operation will be saved.**

6. Monitoring and Logs

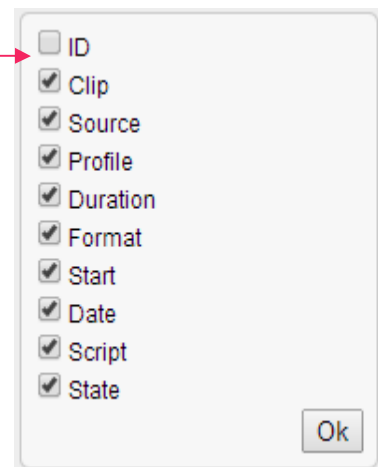
6.1. Monitoring tab

Clip	Source	Profile	Duration	Start	Date	DETECTION	ANALYSIS	INGEST	DELIVERY	Script	State
MXF_Archive_0008.mxf	Input Archives 1	Restore Archives	00:00:30:00	2015/06/19 09:13...	2015/06/19 09:13...	█	█			Analyse	Analysis OK - Job queued
MOV_Archive_0008.mov	Input Archives 1	Restore Archives	00:00:09:00	2015/06/19 09:13...	2015/06/19 09:13...	█	█	█		Ingest 1	Creating delivery folder
MOV_Archive_0007.mov	Input Archives 1	Restore Archives	00:00:09:00	2015/06/19 09:04...	2015/06/19 09:04...	█	█	█		Ingest 1	Create Interplay folder error - 503 - Unknown error [x18A...

The Monitoring tab displays for each process:

- The name of the source file
- The watchfolder source
- The profile used
- Dates and hour of the last event
- The status of each step of the process
 - █ In progress
 - █ In error
 - █ Completed
 - █ Warning, see in the Logs (§6.2)
- The script concerned

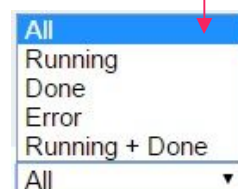
The top right menu, allows to choose what type of column to display.



You can choose (bottom right of the page) to enable or not the automatic refresh of the page.



You can apply filters to display.



6.2. Logs tab

Woody Ingest 2.2.0

Manager Setup Profiles Monitoring Logs

SCRIPT LIST	DATE	CLIP	MSG
ANALYSE	2015/06/19 09:23:43.645	MVF_Archive_0009.mvf	CreateDeliveryFolder
INGEST 1	2015/06/19 09:23:43.465	MVF_Archive_0009.mvf	Deleted
INPUT ARCHIVES 1	2015/06/19 09:23:43.380		setAMTIntegerOffset
THUMBNAILS	2015/06/19 09:23:43.301		Mobile : 050a2b340101010101010000000000000000176494e03-060a2b3477172a80 - 050a2b340101010101010
	2015/06/19 09:23:42.793		ffSb: ffmpeg-loglevel error -! "C:\test\hw\wrap\MVF_Archive_0009.mvf" -dn -vn -c a pcm_s24le -
	2015/06/19 09:23:42.701		setAMTEncodeString - parInBefore : true
	2015/06/19 09:23:42.610		setAMTEncodeString codec : mpeg2video
	2015/06/19 09:23:42.518		setAMTEncodeString - target_AvidCodec : MPEG 50 (PAL)
	2015/06/19 09:23:42.427		setAMTEncodeString

❗ *In case of issues with Woody Ingest, please contact the Woody Technologies support team at support@woody-technologies.com and send the logs files from `C:\Program Data\Woody Technologies\Woody Ingest\log`*

• • •

7. Display of HTML pages

If html pages do not open or do not display successfully:

- Declare in your browser options, the following address <http://127.0.0.1> or the IP address of **Woody Ingest** server as a "trusted website"
- Check the safety rules of your browser.

This one must allow:

- the opening of **Woody Ingest** pages
- the execution of the Javascript scripts
- the execution of XmlHttpRequest queries (on Internet Explorer, the execution of ActiveX controls)

8. WebServices

The Woody WebServices controls the application entirely.

It is possible :

- To submit a job to **Woody Ingest** specifying the path of the Aaf file to process
- To follow the progress of the job

Requests are used to transmit the profile to use, and change dynamically the Interplay destination folder or the name of the asset.

❗ *If you want the complete documentation of WebServices and the tools to test, please ask support@woody-technologies.com.*

• • •

