

GlobeSmart is an industry-leading online cultural intelligence tool providing access to detailed information on how to conduct business effectively with people from over 90 countries.

### Register for a GlobeSmart account

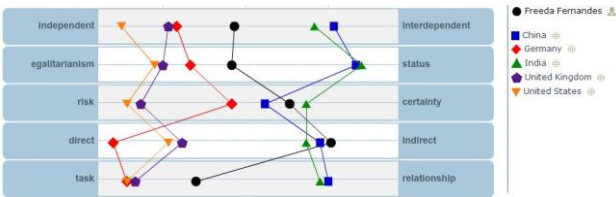
Register using your company email address at <http://learning.aperianglobal.com/portal>

### Discover & compare your GlobeSmart Profile<sup>SM</sup>

Take the GlobeSmart Profile Survey to learn more about your own preferred work-style along five dimensions of culture.



Compare your profile with other individuals, teams and average country profiles.



Invite a Colleague or Create a Team in order to compare profiles and spark a discussion!

Here's How:

- From the portal homepage, click [GlobeSmart Profile](#) and Take the Survey.
- Learn about your resulting profile by clicking on any Dimension in the chart.
- Click [Compare My Profile](#) and select the countries with which you would like to compare and select View Comparison.
- Click on the resulting chart to Get Advice on how to adjust your style to work more effectively with the cultures you have selected.

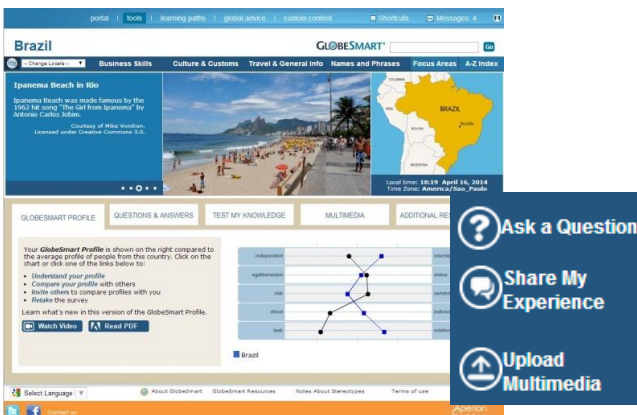
Invite Individuals

- Click on [Invitations](#) and following the tabs from left to right, enter the names or email addresses of the colleagues you would like to invite.
- Choose the Invitation language and send.

Create a Team

- Click the [Teams](#) tab and enter a Team Name.
- Follow the instructions for entering team members and sending invitations.

### Explore in-depth information of other cultures



Here's How:

- From the [GlobeSmart](#) home page, choose a Region, then a Country and access detailed, practical information on conducting business in over 90 locales.
- Under Business Skills, Culture & Customs, and Travel & General Info, you get instant access to over 50 business topics.
- From any of the country business topic pages, view the menu to the right and click on Ask a Question, Share your Experience or Upload Multimedia.

OPEN ENROLLMENT DEMO: For a live demonstration of the tool, register for one of our Open Enrollment Demonstrations at <http://learning.aperianglobal.com/go/opendemo>

TECH SUPPORT: If you need further assistance, please contact [webtools@aperianglobal.com](mailto:webtools@aperianglobal.com)