

COUNTAX™

SERVICE BULLETIN

12-08-33

DATE: 28/02/12

SERIAL No:

MODELS CONCERNED: All Models

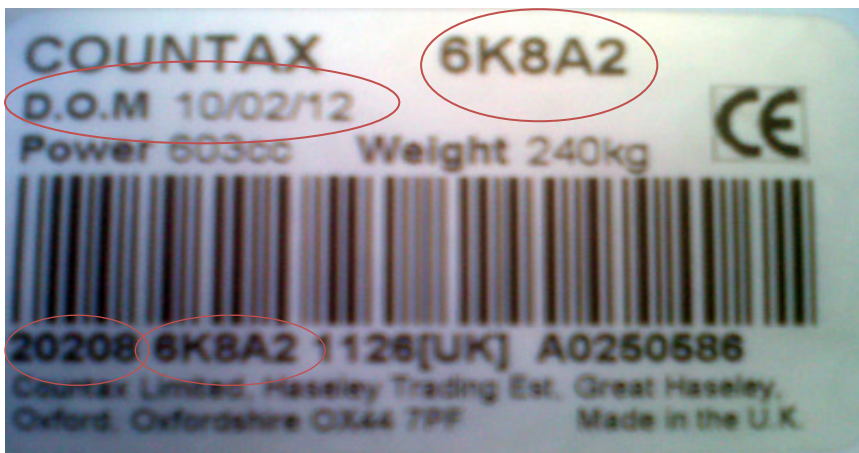
Replace all stock in your warehouse & product Fix as Fail

CONCERN: Serial Number Identification

Serial number identification: 1994 to current day



1994 – 2010



2010- current

The first 5 digits of the serial number indicates the year of manufacture, the date is printed in reverse digits. The next 2 digits inform on which model and engine are fitted.

From 2010, the serial number decal format was changed to include **Date Of Manufacture (D.O.M)** and **Product Code**, as indicated in the example above.

Example:

812166B... = 8/12/16/6/B .

Year 2008 / Month December / Day 16th / model C600/ Briggs Engine

This format of serial number has been used since 1994 , Please note machines built from 1994 to 2000 were fitted with Briggs engines, machines 2001 are fitted with Honda, Kawasaki etc. This will help identify machine as some years will look the same ie: 812166B... Briggs 1998 and 812166H.... Honda 2008.

HOW PRODUCT CODES ARE SET UP THIS EXCLUDES THE X SERIES MACHINES

Example: 6H8A2A

6 = Engine Size	0 = 20 Hp Kawasaki 1 = 11 Hp 2 = 20 Hp or 25HpKawasaki 3 = 13 Hp 4 = 14 Hp (Twin) 5 = 15 Hp (16 Single 15.5 / 14.5) 6 = 16 Hp (Twin) 8 = 18 Hp																
H = Make	B = Briggs H = Honda L = Kohler K = Kawasaki from 2002 Y = Yanmar W = Briggs Westwood F = Honda Williams																
8 = Drive	2 = Manual 6 Tech 8 = Hydro 46 A = hydro K62 B = Hydro 66 C = Hydro K574 2 Port D = Hydro K574 4 Port																
A = Model Variations	<table><tr><td rowspan="4">Countax</td><td rowspan="4">{</td><td>A = Manual Deck and Pgc</td></tr><tr><td>B = Dial Height Deck – Manual Pgc</td></tr><tr><td>C = Dial Height Deck – Electric Pgc</td></tr><tr><td>D = Manual Deck – Electric Pgc</td></tr><tr><td rowspan="8">Westwood</td><td rowspan="8">{</td><td>E = Manual Deck – Manual Pgc</td></tr><tr><td>F = Dial Height Deck – Manual Pgc</td></tr><tr><td>G = Dial Height Deck – Electric Pgc</td></tr><tr><td>H = Manual Deck – Electric Pgc</td></tr><tr><td>J = Manual Deck – Electric Lift Note Emptying</td></tr><tr><td>M = Dedicated Mulcher – No Pto</td></tr><tr><td>N = Mini Westwood Machine</td></tr><tr><td>P = Dedicated Mulcher – No Pto – Westwood</td></tr></table>	Countax	{	A = Manual Deck and Pgc	B = Dial Height Deck – Manual Pgc	C = Dial Height Deck – Electric Pgc	D = Manual Deck – Electric Pgc	Westwood	{	E = Manual Deck – Manual Pgc	F = Dial Height Deck – Manual Pgc	G = Dial Height Deck – Electric Pgc	H = Manual Deck – Electric Pgc	J = Manual Deck – Electric Lift Note Emptying	M = Dedicated Mulcher – No Pto	N = Mini Westwood Machine	P = Dedicated Mulcher – No Pto – Westwood
Countax	{			A = Manual Deck and Pgc													
				B = Dial Height Deck – Manual Pgc													
				C = Dial Height Deck – Electric Pgc													
		D = Manual Deck – Electric Pgc															
Westwood	{	E = Manual Deck – Manual Pgc															
		F = Dial Height Deck – Manual Pgc															
		G = Dial Height Deck – Electric Pgc															
		H = Manual Deck – Electric Pgc															
		J = Manual Deck – Electric Lift Note Emptying															
		M = Dedicated Mulcher – No Pto															
		N = Mini Westwood Machine															
		P = Dedicated Mulcher – No Pto – Westwood															
2 = Deck Size	1 = Single 2 = Twin																
A = Country	A = UK B = Germany C = New Zealand – Australia D = Italy E = France F = Belgium G = Greece H = Hayter																

I = Ireland
 J = JCB
 K = Sweeden
 L = Denmark
 M – Czech
 N = Holland
 O = Cyprus
 P = Poland
 Q = Hungary
 R = Turkey
 S = Spain
 T = Hong Kong
 U = Austria
 W = Westwood
 Y = Norway
 Z = South Africa
 99 = Misc

HOW PRODUCT CODES ARE SET UP X/W SERIES MACHINES

Example: 6H8X5A

6 = Engine Size
 0 = 20 Hp Kawasaki
 1 = 11 Hp
 2 = 20 Hp or 25HpKawasaki
 3 = 13 Hp
 4 = 14 Hp (Twin)
 5 = 15 Hp (16 Single 15.5 / 14.5)
 6 = 16 Hp (Twin)
 8 = 18 Hp

H = Make
 B = Briggs
 H = Honda
 L = Kohler
 K = Kawasaki from 2002
 Y = Yanmar
 W = Briggs Westwood
 F = Honda Williams

8 = Drive
 8 = Hydro K46
 A = hydro K62
 B = Hydro K66
 C = Hydro K574 2 Port
 D = Hydro K574 4 Port

X = Manufacture
 W = Westwood
 X = Countax

5 = Deck Size
 2 = Manual
 3 = Dial H - Pre 2010-09-07
 5 = Dial Height

A = Country
 A = UK
 B = Germany

Serial numbers for 1991-1993

From 1991 (the first date of Countax ride-on mower manufacture) to 1993, a short serial number process providing less information, was in use.

- The first 3-digits indicated the model of garden tractor
 - **125 = K12.5**
 - **140 = K14**
 - **180 = K18**

- The 6-digits are the product build serial number, an example shown below:
 - **1250001212 (K12.5, number 1212 of K12.5 mowers built)**



Please contact COUNTAX service department for any further information