

PERMCO HYDRAULIC/PNEUMATIC PRODUCTS

Engineering Bulletin

1500 Frost Rd
Post Office Box 2068
Streetsboro, Ohio 44241
Phone: (330) 626-2801
Fax: (330) 626-2805

TO: All Sales, Pump Assembly
Cc: Manufacturing DATE: 06-14-2017

Subject

Due to increased request from Permco customers a dowel pin change has been implemented for our PM4D vane motor family (PM4D, PM4D1, PM4SD, PM4SD1). The new dowel pin design will allow direct field interchangeability to that of our competitors and similar products seen in the market.

This will be a running production change. This change will affect the cam ring, dowel pins and end cap. New cam ring will be machined to accept both old design dowel pin and new design dowel pins, this will aid in repair of our old design PM4D models. When replacing the cam ring or cartridge kit from our old design models simply reuse the dowel pin from the old design cam ring or cartridge kit. If replacing the cam ring or cartridge kit in our new design model simply reuse the installed dowel pins. New dowel pin designs will feature a larger port plate dowel pin diameter and a smaller pressure plate dowel pin diameter. The end cap will be machined to accept the larger port plate dowel pin diameter.

We will continue to utilize the same model number structure for unit assemblies; serviceable items cam ring part numbers and cartridge kit part numbers will change and we will add (2) additional part numbers for the dowel pins, all listed within this bulletin.

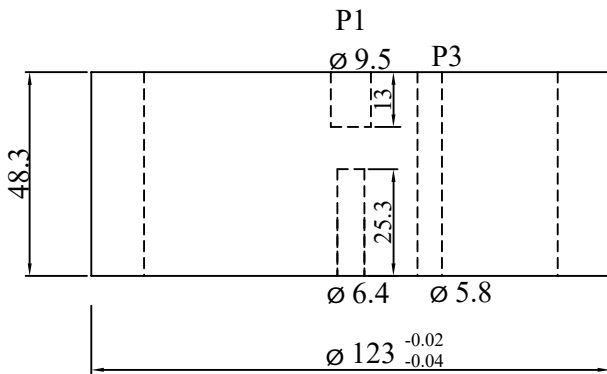
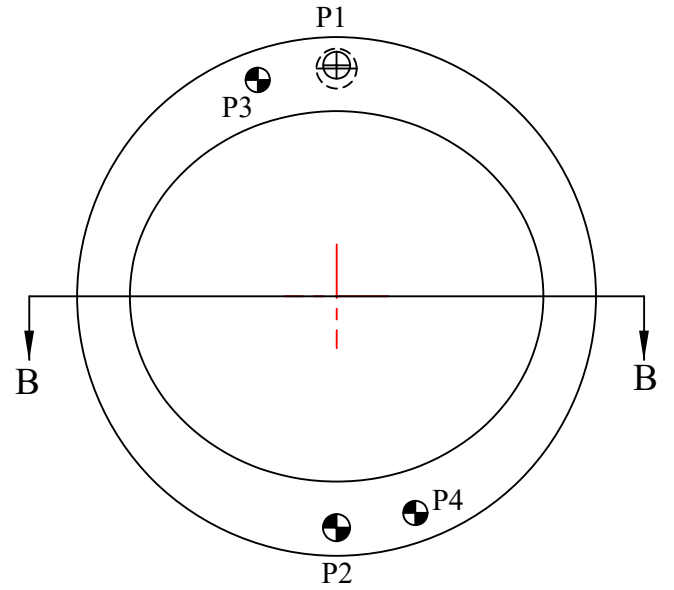
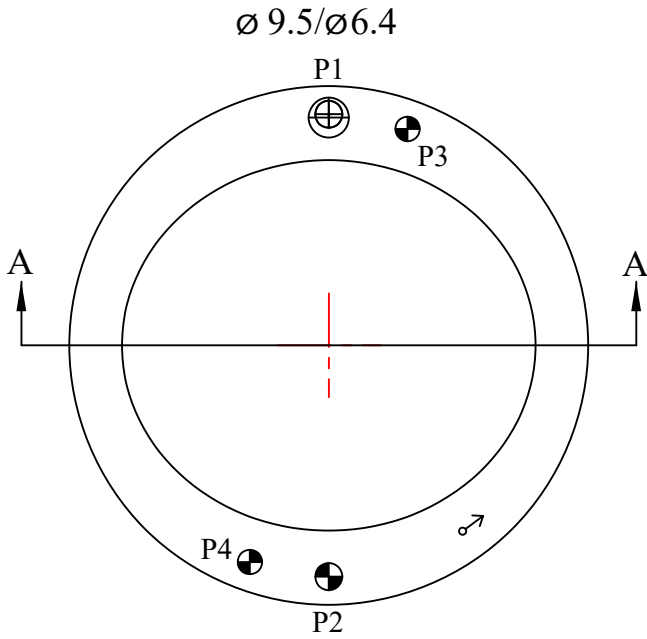
Thanks

Permco Product Development Division

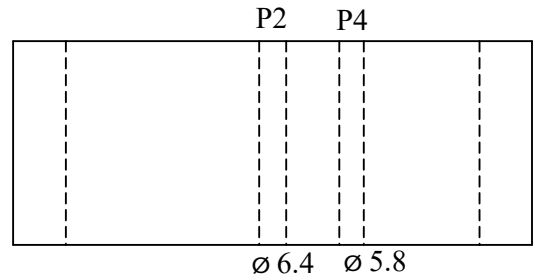


The information contained in this facsimile message is property of Permco and confidential information intended only for the recipient named above. If the reader of this message is not the intended recipient, or agent responsible to deliver it to the intended recipient, you are hereby notified that any dissemination, distribution or copying of this document or its contents are strictly prohibited. If you have received this document in error, please immediately notify us by telephone and return this original facsimile to use at the address via the U.S. Postal Service. Thank you.

PART #	DESCRIPTION
P034-59680-1	CAM RING 062 STANDARD DUTY FOR PM4D/PM4D1
P034-59681-1	CAM RING 074 STANDARD DUTY FOR PM4D/PM4D1
P034-59682-1	CAM RING 088 STANDARD DUTY FOR PM4D/PM4D1
P034-59683-1	CAM RING 102 STANDARD DUTY FOR PM4D/PM4D1
P034-59684-1	CAM RING 113 STANDARD DUTY FOR PM4D/PM4D1
P034-59685-1	CAM RING 128 STANDARD DUTY FOR PM4D/PM4D1
P034-59686-1	CAM RING 138 STANDARD DUTY FOR PM4D/PM4D1
P034-59687-1	CAM RING 062 SEVERE DUTY FOR PM4SD/PM4SD1
P034-59688-1	CAM RING 074 SEVERE DUTY FOR PM4SD/PM4SD1
P034-59689-1	CAM RING 088 SEVERE DUTY FOR PM4SD/PM4SD1
P034-59690-1	CAM RING 102 SEVERE DUTY FOR PM4SD/PM4SD1
P034-59691-1	CAM RING 113 SEVERE DUTY FOR PM4SD/PM4SD1
P034-59692-1	CAM RING 128 SEVERE DUTY FOR PM4SD/PM4SD1
P034-59693-1	CAM RING 138 SEVERE DUTY FOR PM4SD/PM4SD1
P324-21612-S	DOWEL PIN PORT PLATE PM4D/PM4D1/PM4SD/PM4SD1 SHORT
P324-22414	DOWEL PIN PRESSURE PLATE PM4D/PM4D1/PM4SD/PM4SD1
PS24-10620-1	CARTRIDGE KIT 062 STANDARD DUTY FOR PM4D/PM4D1
PS24-10621-1	CARTRIDGE KIT 074 STANDARD DUTY FOR PM4D/PM4D1
PS24-10622-1	CARTRIDGE KIT 088 STANDARD DUTY FOR PM4D/PM4D1
PS24-10623-1	CARTRIDGE KIT 102 STANDARD DUTY FOR PM4D/PM4D1
PS24-10624-1	CARTRIDGE KIT 113 STANDARD DUTY FOR PM4D/PM4D1
PS24-10625-1	CARTRIDGE KIT 128 STANDARD DUTY FOR PM4D/PM4D1
PS24-10626-1	CARTRIDGE KIT 138 STANDARD DUTY FOR PM4D/PM4D1
PS24-10627-1	CARTRIDGE KIT 062 SEVERE DUTY FOR PM4SD/PM4SD1
PS24-10628-1	CARTRIDGE KIT 074 SEVERE DUTY FOR PM4SD/PM4SD1
PS24-10629-1	CARTRIDGE KIT 088 SEVERE DUTY FOR PM4SD/PM4SD1
PS24-10630-1	CARTRIDGE KIT 102 SEVERE DUTY FOR PM4SD/PM4SD1
PS24-10631-1	CARTRIDGE KIT 113 SEVERE DUTY FOR PM4SD/PM4SD1
PS24-10632-1	CARTRIDGE KIT 128 SEVERE DUTY FOR PM4SD/PM4SD1
PS24-10633-1	CARTRIDGE KIT 138 SEVERE DUTY FOR PM4SD/PM4SD1



A - A



B - B

PM4D	P1(PIN)		P2(PIN)	P3	P4
	X0.	X0.	X0.	X 18.68	X -18.68
Y 54.0	Y 54.78	Y -54.78	Y 51.32	Y -51.32	