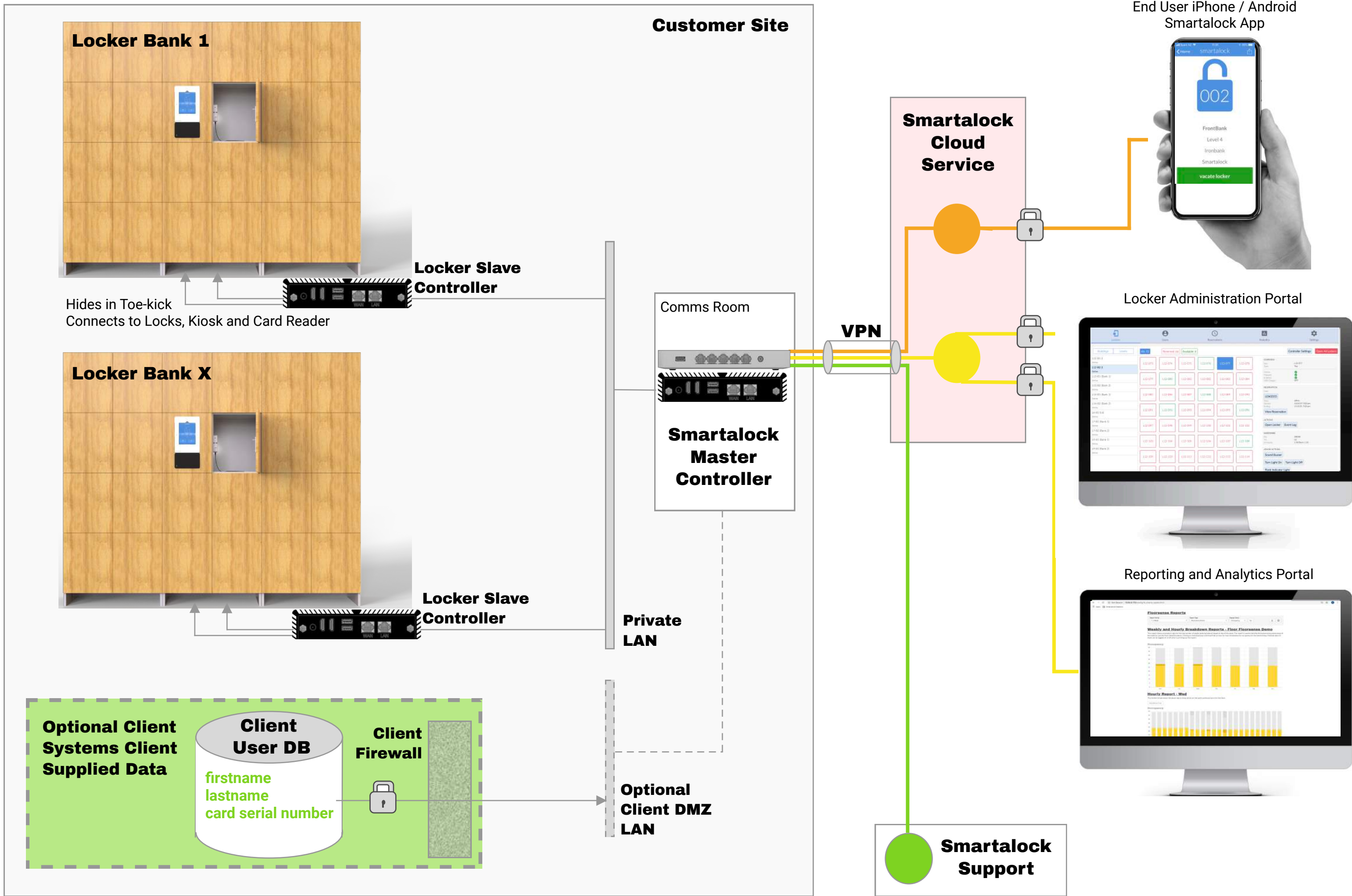


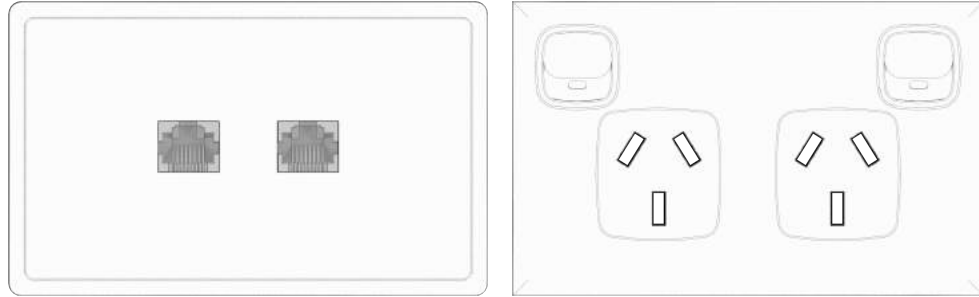
Smartalock System - Operation Overview



Smartalock System - Mandatory Customer IT Requirements Checklist

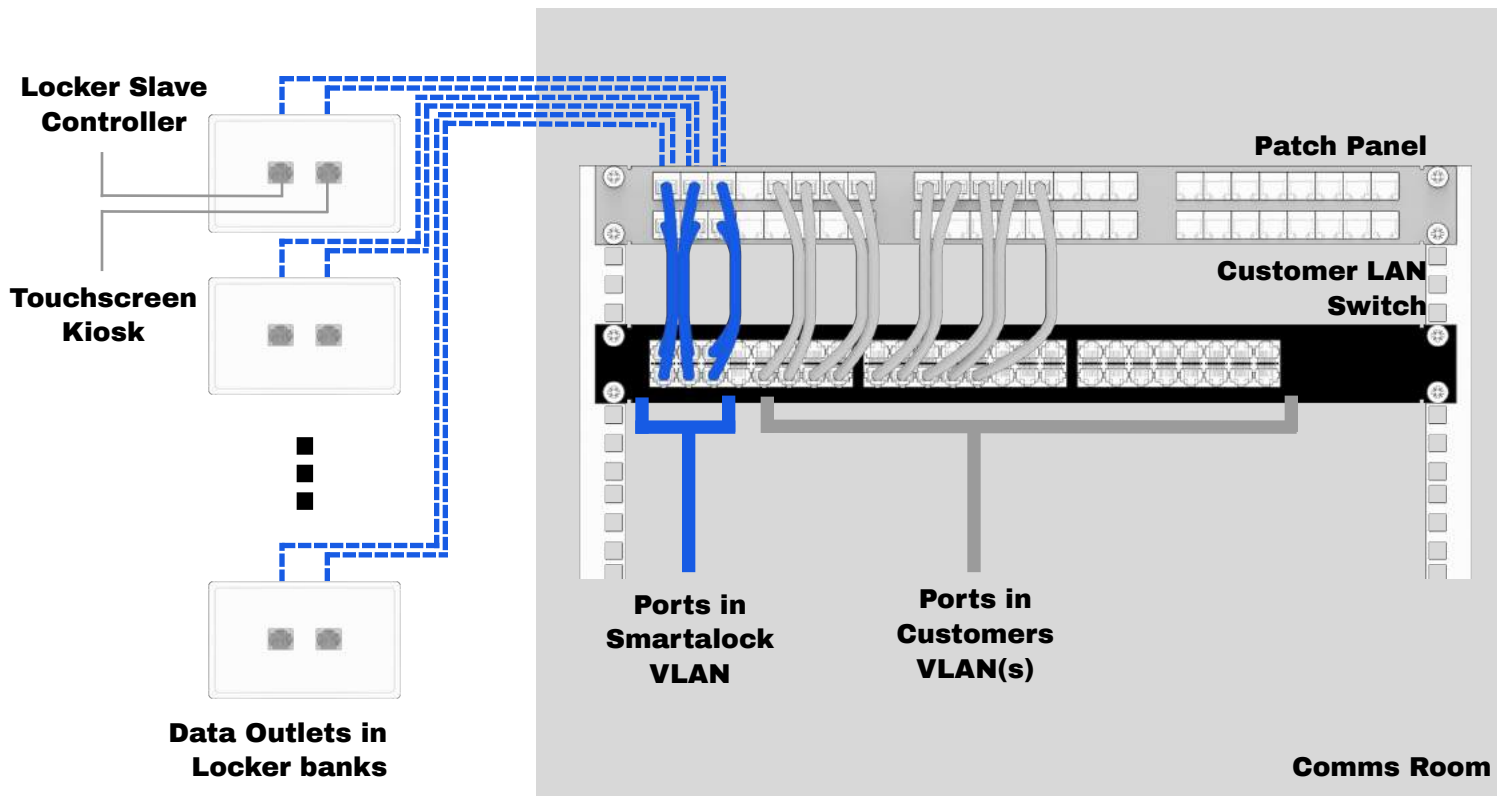
1

Dual Power and Dual Data Outlets behind locker bank at toekick height



2

All Data Outlets are connected into a "Smartalock" Layer 2 VLAN on Customer LAN switch.



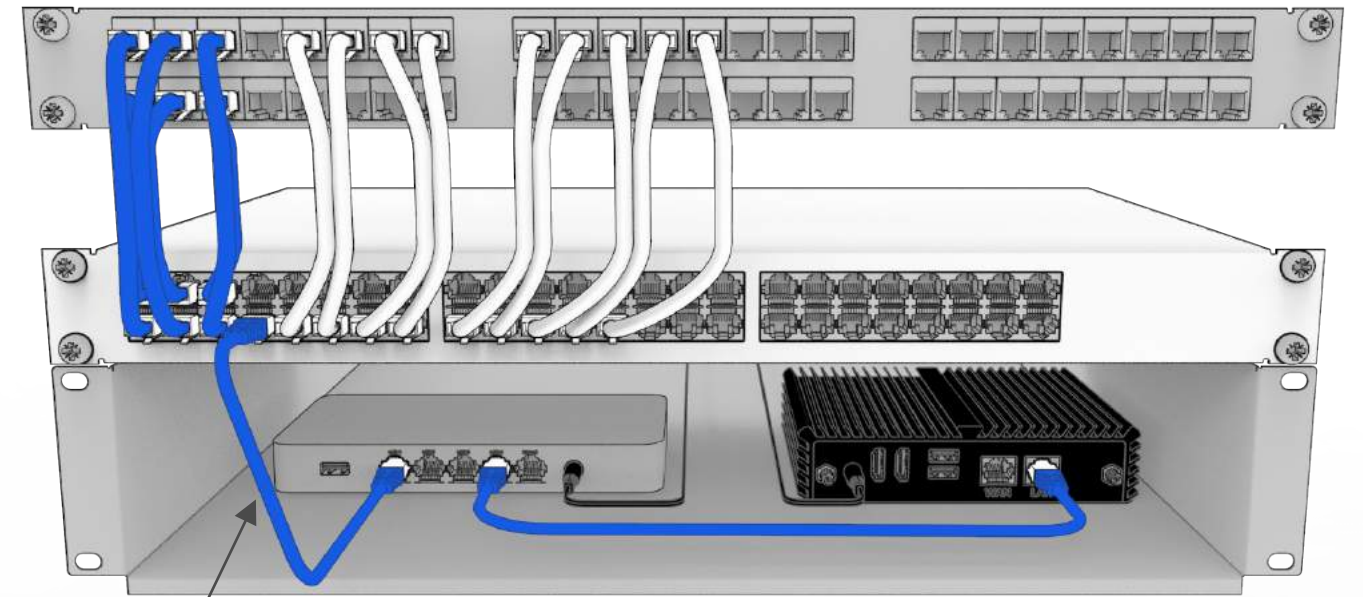
2b

Reseller can provide a dedicated Smartalock LAN switch at additional cost if not possible to connect to Customer LAN switch

3

2U Shelf and 2x Power in Comms room for installing the Smartalock Master Controller and Cisco VPN Appliance.

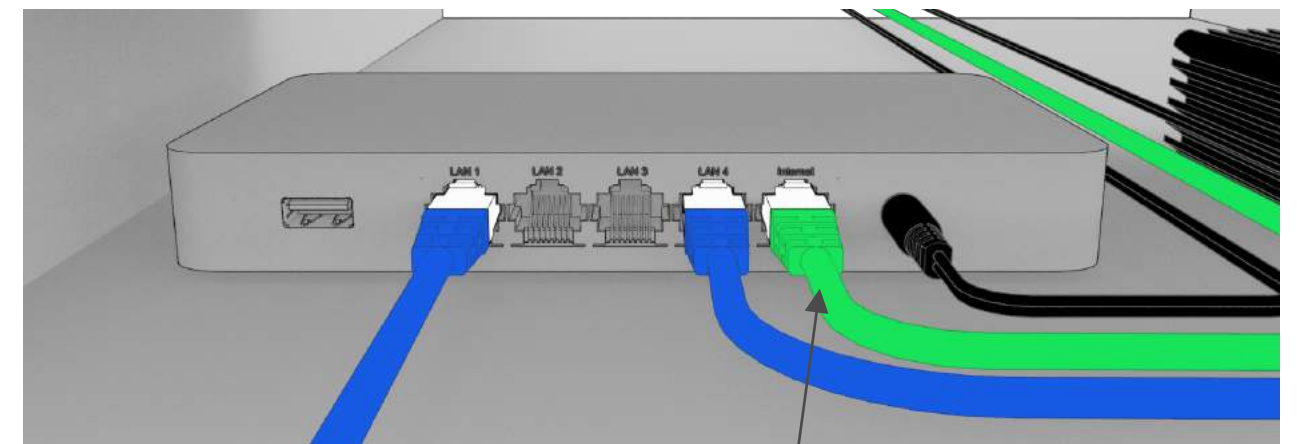
Connect Cisco to Smartalock Vlan.



VLAN connection Cisco VPN Appliance Smartalock Master Controller 2U Shelf

4

Internet Connection to Cisco VPN Appliance



- VPN Friendly Internet Connection
- Traffic Estimate <2GB/Month
- Speed - 4G, DSL or Better
- No Static public IP required
- Ethernet Presentation
- Detailed Security Document available on request

Internet Connection goes here

Smartalock System - Optional Customer Requirements

5

Initial Import File of Users and their Card Numbers

- Excel, CSV or TSV file format
- 3 Columns - firstname, lastname, swipe card number
- Card number is either Decimal or Hex
- Card number is the unencrypted CSN number from the building card
- Send Sample cards to Smartalock along with their CSN numbers for compatibility checking
- CAREFUL when using EXCEL for Card numbers over 15 digits
- Laptop card reader available if CSN number not stored in customer system

	A	B	C	D	E
1	firstname	lastname	cards		
2	Orville	Noller	7044144349		
3	Isidora	Colomb	6249335374		
4	Marsiella	Cowey	9694911834		
5	Tome	Windibank	6645822715		
6	Clemens	Shelper	5718334803		
7	Dulciana	Sconce	2148168169		
8	Maxim	Fennelly	2025401639		
9	Gwenora	Lowres	1511226579		
10	Stefania	Docket	1045180653		
11	Arney	Bleackley	9422820200		
12	Fitzgerald	Baverstock	4561990054		
13	Geraldine	Sever	3922729517		

6

Initial Locker Allocation

- via Web Portal or Bulk import in Excel, CSV or TSV file format
- As per initial import file, but add 4th column called "res_fixed"
- Specify the Locker number allocated including the prefix

	A	B	C	D
1	firstname	lastname	cards	res_fixed
2	Orville	Noller	7044144349	L4-004
3	Isidora	Colomb	6249335374	L4-006
4	Marsiella	Cowey	9694911834	L4-001
5	Tome	Windibank	6645822715	L4-107
6	Clemens	Shelper	5718334803	L4-133
7	Dulciana	Sconce	2148168169	L4-066
8	Maxim	Fennelly	2025401639	L4-067
9	Gwenora	Lowres	1511226579	L4-023

7

Locker Policy - Modify System Default Settings

- Are lockers available on demand or must be pre-allocated to users by Admin?
- Can a user have more than 1 locker at a time?
- If lockers are on-demand, how long should the default reservation last for?
- If lockers are on-demand, can user choose which locker they like or get the system randomly allocated next locker available?
- What should happen if a user doesnt open / use their locker for a long time?
- Will users be able to use the Smartalock App from Day 1 or enable later on demand?
- Should all initial PIN numbers be set to common number (that user can change) or randomly generated?

8

Automate the connection to upload new users and card numbers from external system

- Automate upload of incremental changes from building card system to Smartalock via SCP or HTTP protocols
- Specific API integration available for Gallagher based building access systems
- Detailed documentation available on request