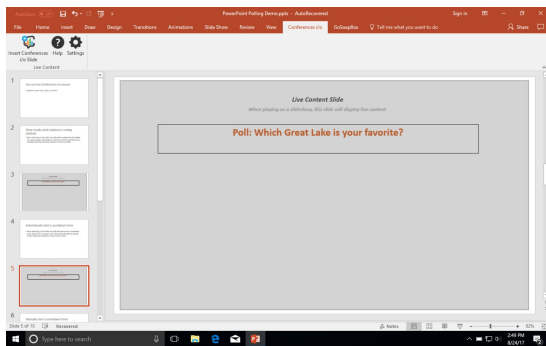


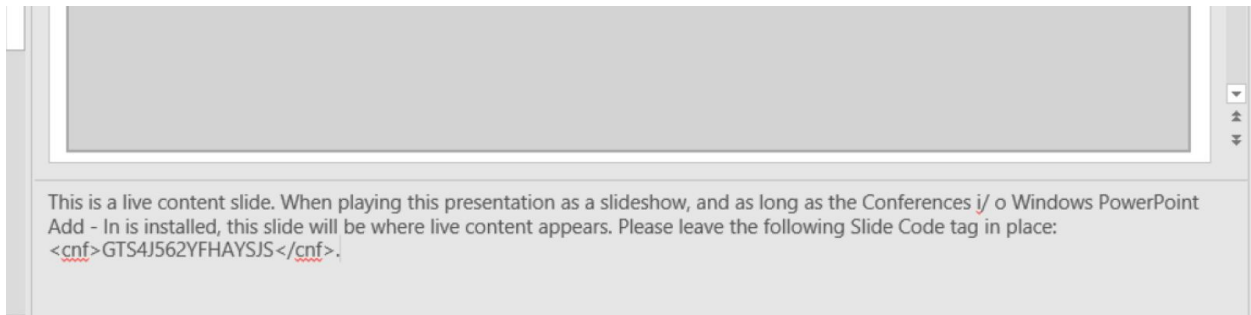
Note: This article only applies to the second-generation PowerPoint Add-In

1. Create a new Conferences i/o slide or edit an existing slide.



2. Copy the presenter notes from the Conferences i/o slide.

You may have to display notes by browsing to the "View" ribbon and clicking "Notes".



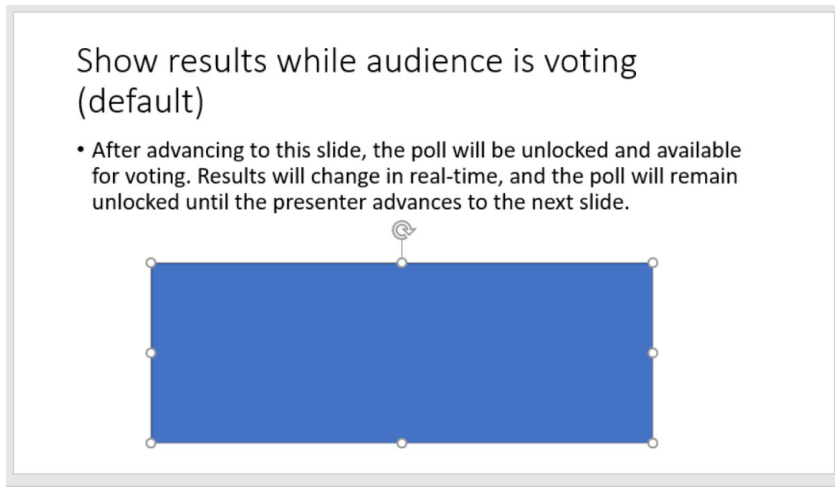
3. Paste the presenter notes on the slide you would like to use.

Note that this action, on its own, will cause the target slide to have a full-screen poll when running the slideshow.

After taking this step, you can remove the original Conferences i/o slide.

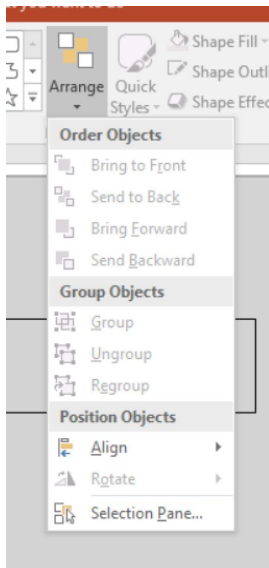
4. Insert a rectangular shape into the target slide.

Note that you can change the shape later.

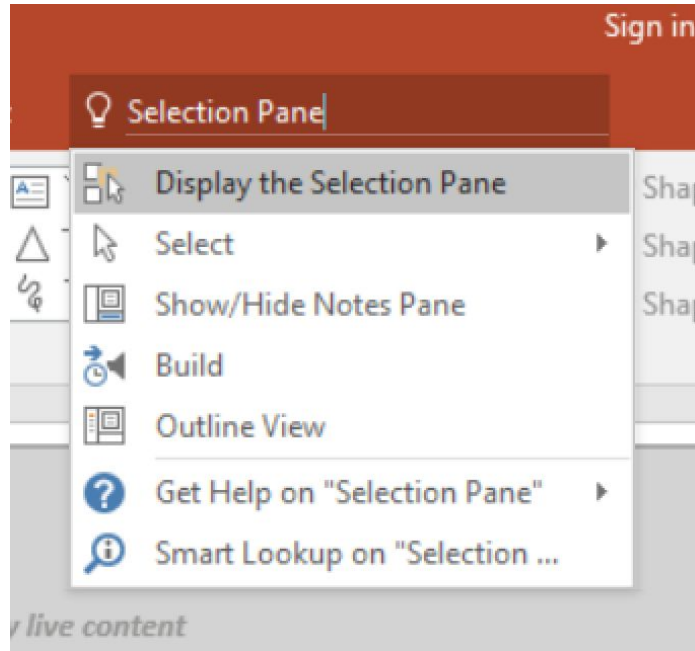


5. Open the “selection pane”. There are a few ways to do this.

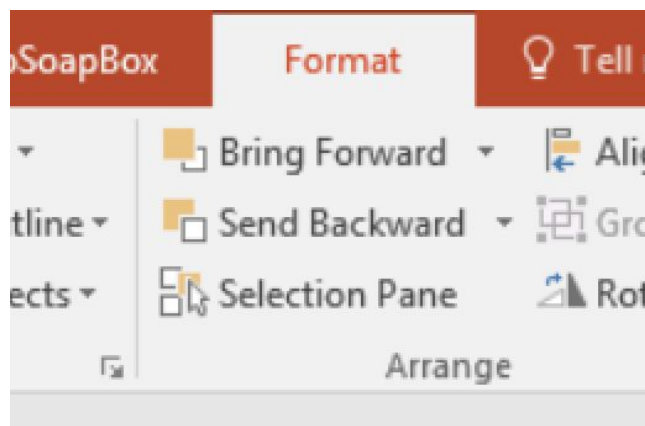
Option 2A — Go to the “Home” ribbon, click on the “Arrange” button, and choose “Selection Pane”.



Option 2B — Search for “Selection Pane” and choose “Display the Selection Pane”

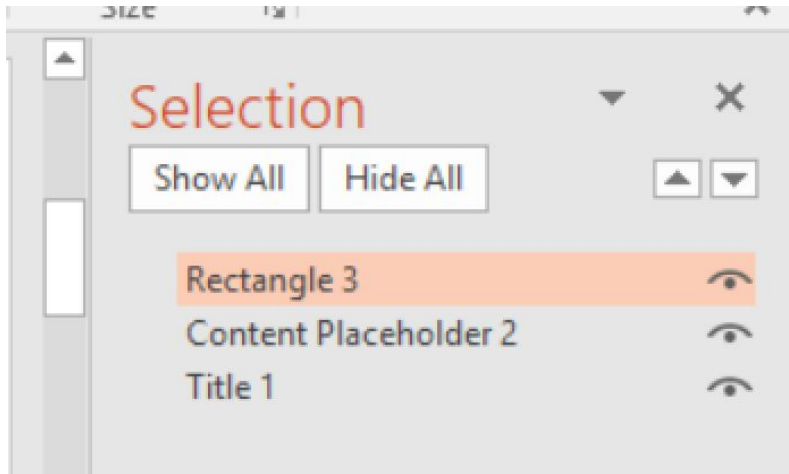


Option 2C — Click on the rectangular gray shape on the slide so that it is selected, then switch to the “Format” ribbon and click “Selection Pane” in the “Arrange” section.



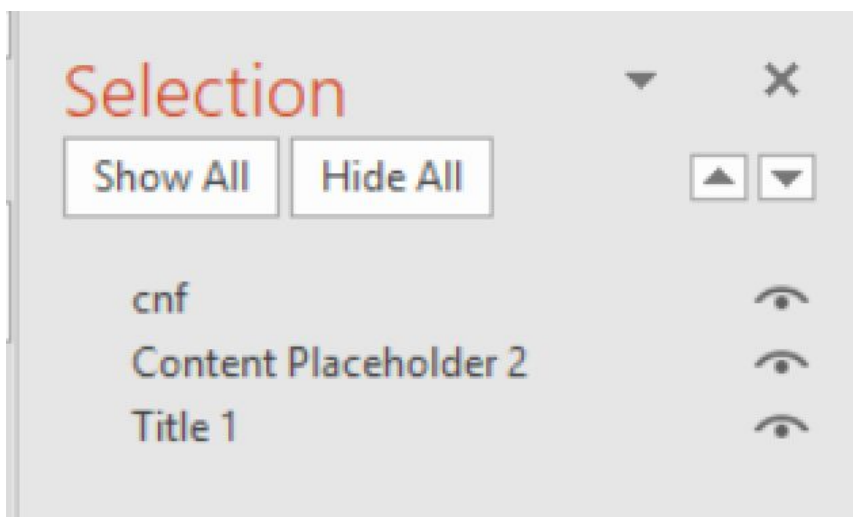
6. The selection pane should open to the right of the slide content.

This will look something like the below screenshot.



7. Click the name of the rectangular shape to switch to editing mode, and change its name to “cnf”

Note that the order of objects in the selection pane does not matter



Note: This article only applies to the second-generation PowerPoint Add-In

8. Resize the shape if necessary

9. Test the slideshow

Please note that this functionality has not been extensively tested so there may be some discrepancies between the location of the shape and the location of the overlay poll.