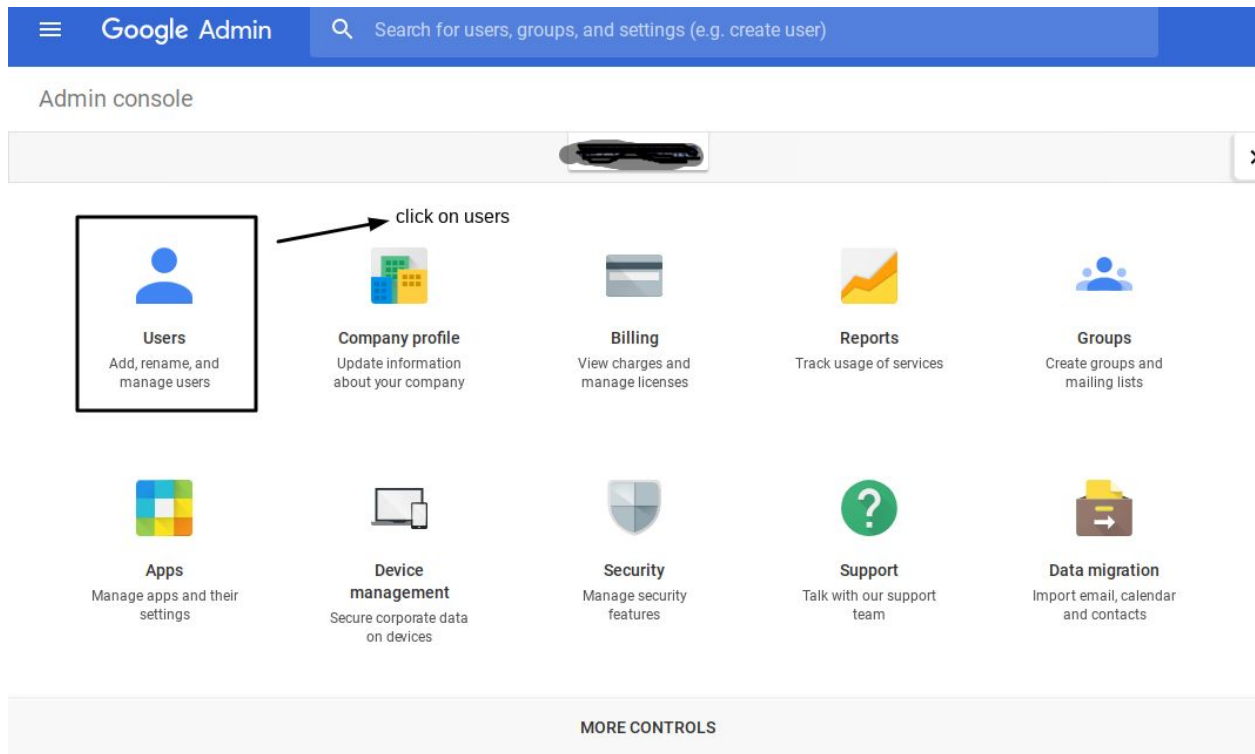
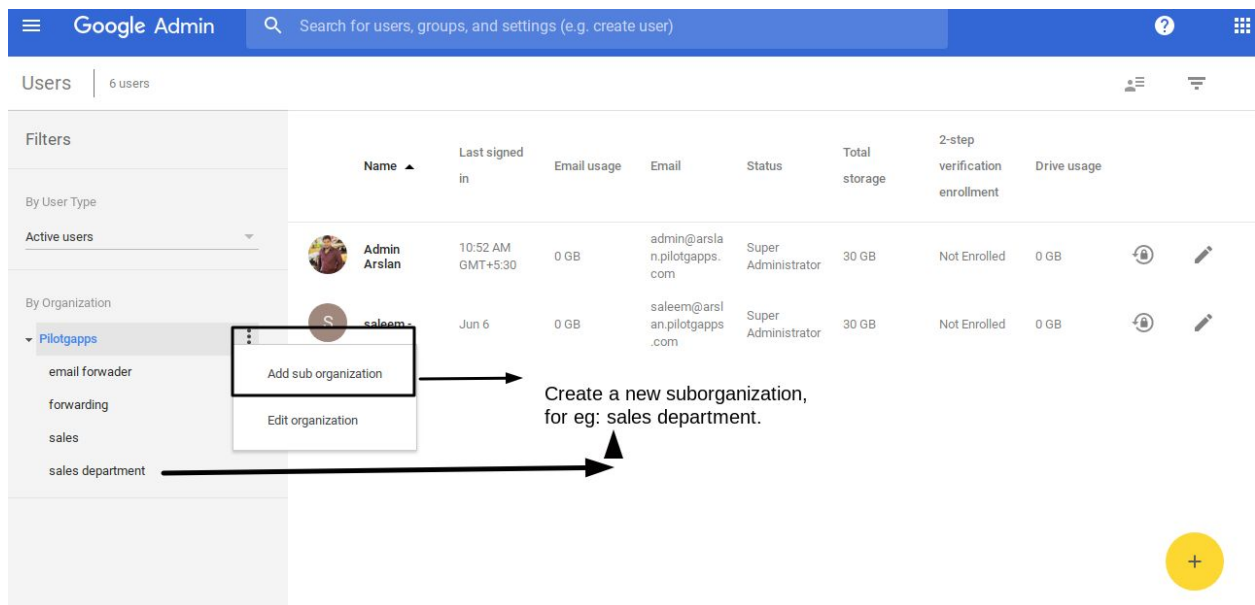


# Allowing the access to selected domains using content compliance

1. Go to admin console (admin.google.com).
2. Click on Users option from the dashboard.



3. Create a new sub organization for eg : sales department.



# Allowing the access to selected domains using content compliance

4. Select the particular user and move it to the specific sub organization as mentioned in screenshot.

The screenshot shows the Google Admin console's 'Users' page. The filter is set to 'Pilotgapps > sales department'. A table lists users, with 'shekar .' selected. A 'Move to organization' dialog is open, showing a tree view of sub-organizations under 'Pilotgapps', with 'sales department' selected. A yellow plus icon is visible in the bottom right corner.

Name	Last signed in	Email usage	Email	Status	Total storage
shekar .	Jun 7	0 GB	shekar@arslan.pilotgapps.com	Active	30 GB

Annotations in the screenshot:

- An arrow points from the 'sales department' sub-organization in the left sidebar to the 'Move particular user to respective Sub organization. for eg : Sales department' text.
- An arrow points from the 'shekar .' user in the table to the 'Move to organization' dialog.
- An arrow points from the 'Move to organization' dialog to the 'sales department' sub-organization in the tree view.

5. Go to **Apps > G Suite > Settings for Gmail > Show more > Advanced settings**.

6. Select the specific sub organization where the content compliance settings need to be configured.

7. Find the content compliance option and click on configure.

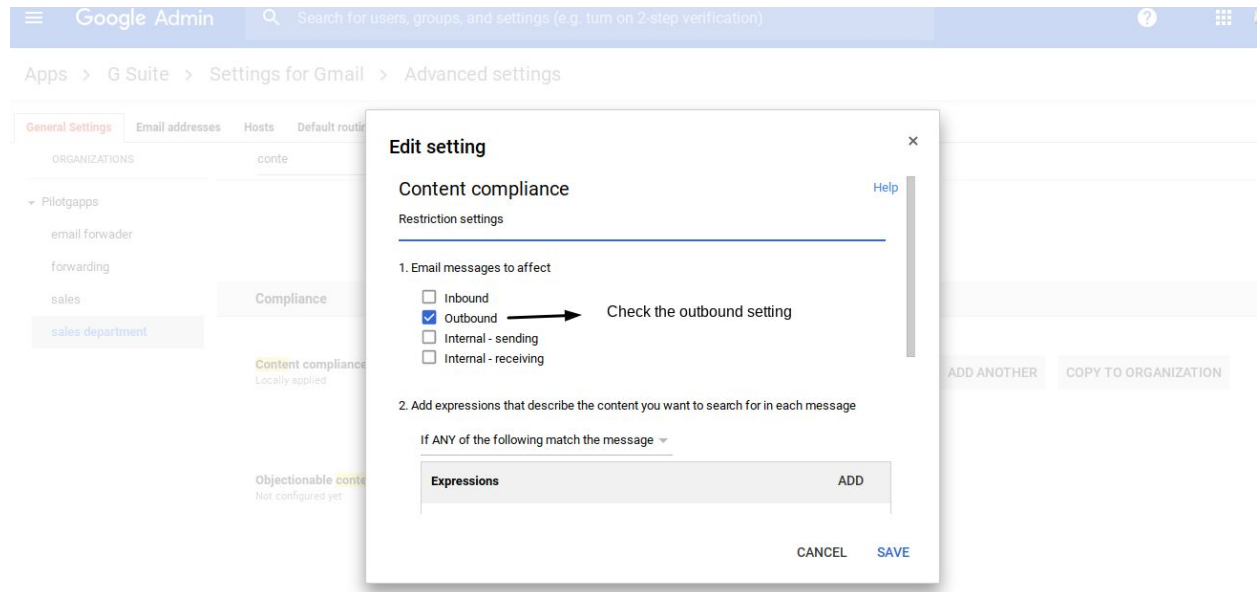
The screenshot shows the 'Settings for Gmail > Advanced settings' page. The breadcrumb path is 'Apps > G Suite > Settings for Gmail > Advanced settings'. The 'Compliance' section is expanded, showing 'Content compliance' (Locally applied) and 'Objectionable content' (Not configured yet). The 'Content compliance' section includes 'Restriction settings' with 'Messages: Outbound', 'Matches: 1', and 'Consequences: Reject message'. The 'Objectionable content' section includes 'Configure content filters based on word lists'.

Annotations in the screenshot:

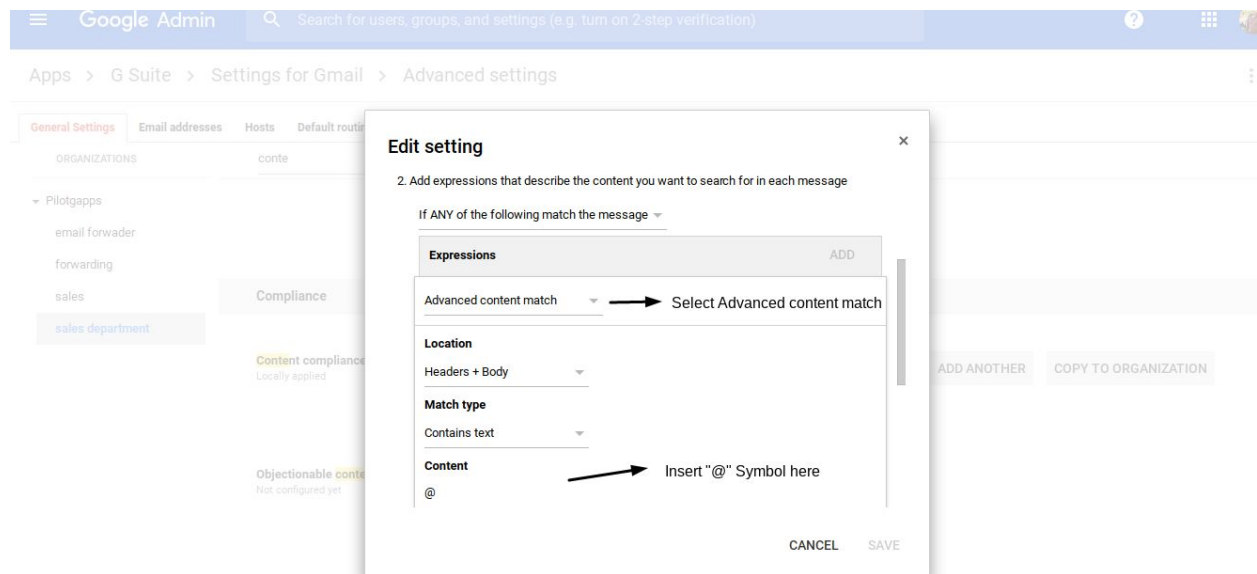
- An arrow points from the 'sales department' sub-organization in the left sidebar to the 'Content compliance' section.
- An arrow points from the 'Content compliance' section to the 'Objectionable content' section.

# Allowing the access to selected domains using content compliance

## 8. Select the Outbound option.

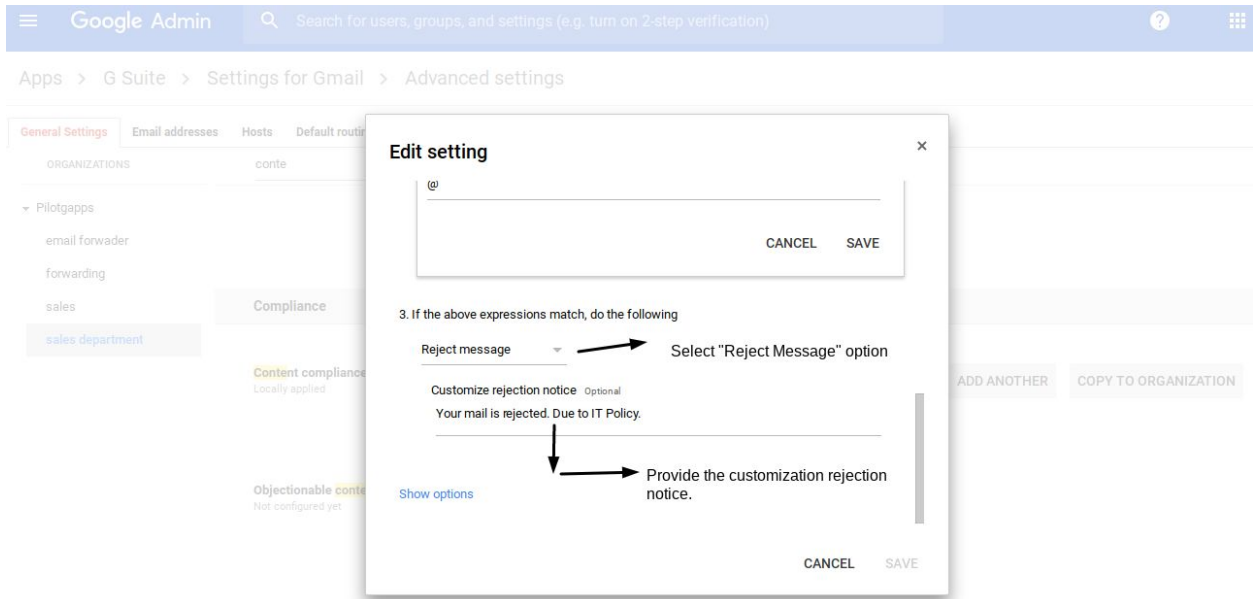


## 9. Match the patterns by selecting the advanced content match option as bper below screenshot.



# Allowing the access to selected domains using content compliance

10. Select the reject message option and provide the customization notice.



11. Input the domain names for which you want to give the access in order to allow sending and receiving emails within this approved list.

12. Click on save option.

