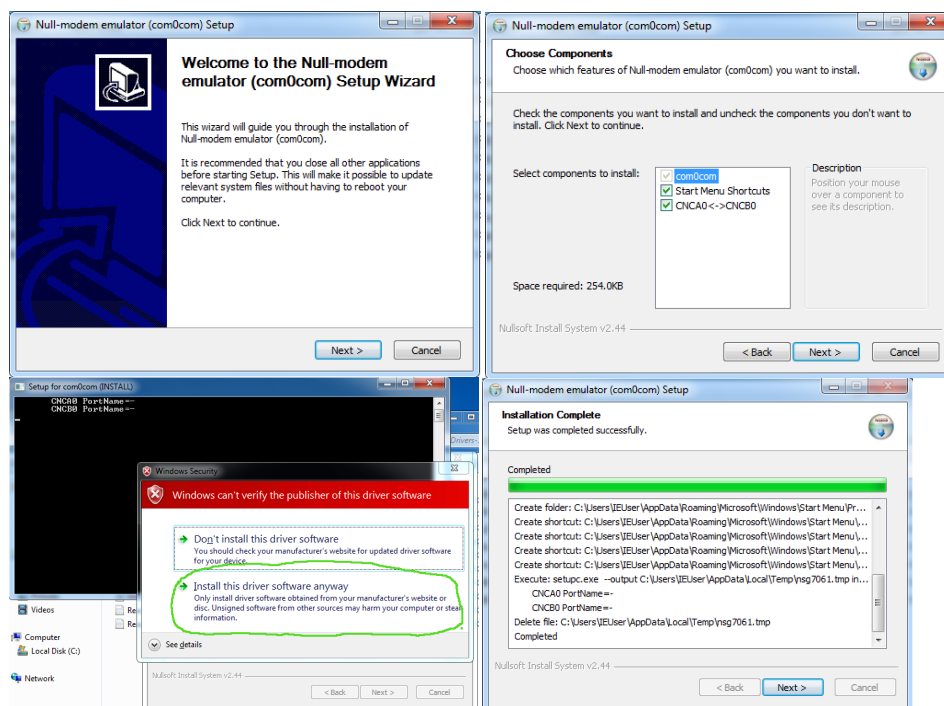


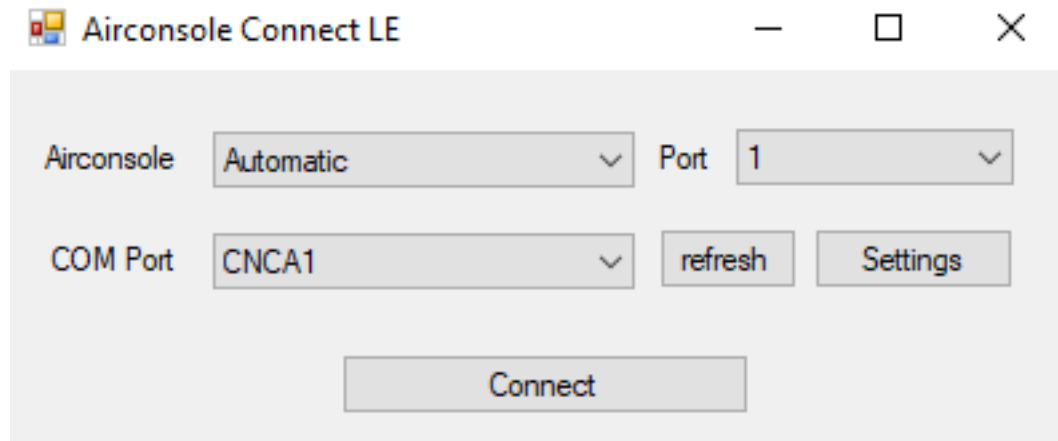
These instructions detail how to map a COM port on your Windows 10 PC to an Airconsole-LE.

Note: If you don't require COM port access but a terminal instead, consider using the command line tool `acle.exe` also included in the bundle (see separate documentation for this)

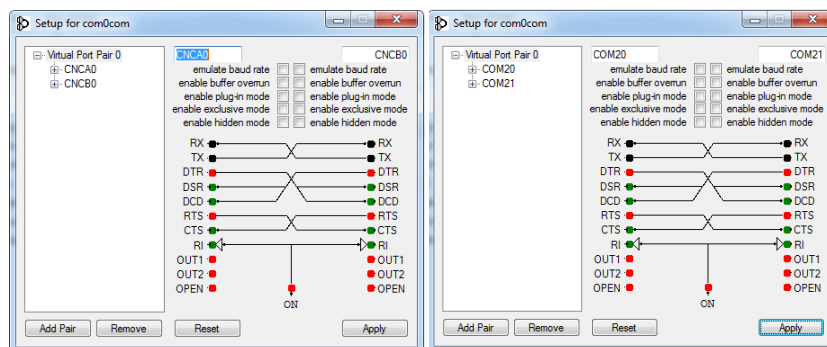
1. Download the Airconsole-LE Windows 10 driver bundle from <http://support.get-console.com/solution/categories>
2. Extract the bundle to a folder on your computer
3. Install the com0com virtual COM port driver
 - 3a. For 32-bit Windows install `com0com-2.2.2.0-setup (32 bit).exe`
 - 3b. For 64-bit Windows install `com0com-2.2.2.0-setup (64 bit).exe`



4. Run `AirconsoleConnectLE.exe` from the extracted folder. The program needs Administrator privileges so you may get an elevation prompt.



5. If this is the first time running AirconsoleConnectLE it will complain that there are no COM ports available. You will need to add some by pressing the "Settings" button. This will launch the com0com GUI setup utility.



In the setup program press the "Add Pair" button to add a new COM port. By default the COM ports will be called CNCA0/CNCB0 but these can be renamed to any available COM port name. In the example above COM20/COM21 are used. Press the "Apply" button to save any changes.

Continue adding additional COM ports for as many simultaneous serial connections you require.

Close the setup utility and press the "Refresh" button in AirconsoleConnectLE to update the list of available ports.

6. Choose the Airconsole-LE that you want to connect to using the drop-down menu. Nearby Airconsole-LE units are discovered using Bluetooth Low Energy, and detected Airconsole-LEs will be displayed in the combo box. If your Airconsole-LE has multiple serial ports these will be selectable in the Ports combo box.

The first option in the list is "Automatic" which simply selects the first Airconsole-LE available.

7. Choose the COM port you want to map the Airconsole to from the COM port combo box. The Combo box lists all com0com virtual COM ports.

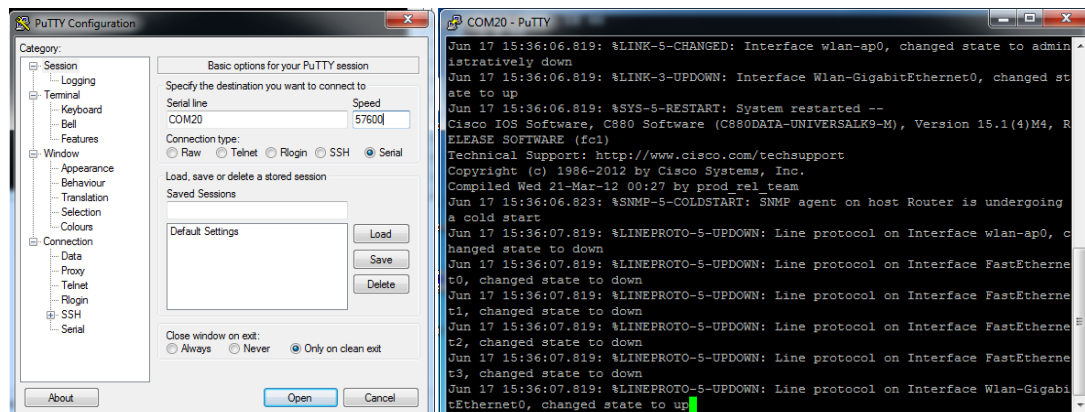
8. Press the "Connect" button to make the connection. This performs two steps:

- a.) Connects to the selected Airconsole-LE
- b.) Connects the Airconsole-LE session to the selected COM port

Note: AirconsoleConnectLE must stay open to maintain the Airconsole-LE to COM port mapping.

Note: To simultaneously map multiple COM ports to multiple Airconsole-LEs, run additional copies of AirconsoleConnectLE as needed

9. Open a program that wants to use the serial port (Putty in this example) and connect to the COM port chosen in step 7 (COM20 in our example). You should be able to interact as though the COM port were locally attached to your PC. Features such as setting the baud rate and sending break command should work as normal from your serial application.



10. Once finished with the serial connection, press disconnect in AirconsoleConnectLE to close the COM port to Airconsole-LE mapping