

Airconsole Firmware Upgrade for Version 2.x Firmware

Note: This upgrade procedure is only intended for devices running version **1.04 or later** of the Airconsole firmware. If your Airconsole is not running a version of firmware earlier than 1.04 firmware **DO NOT USE THIS VERSION**. Please upgrade your Airconsole to version 1.04 first using the 1.04 firmware available from support@get-console.com and after successfully upgrading to version 1.04 you can use this 2.xx software upgrade.

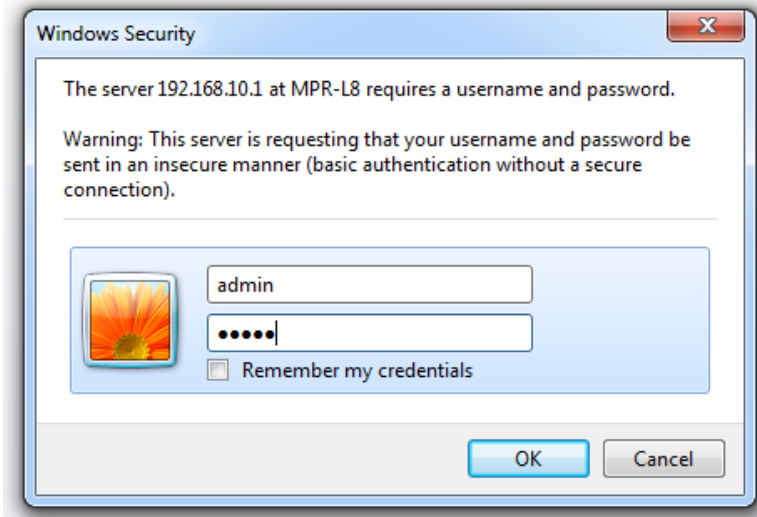
Note also that the firmware upgrade from version 1.04 to 2.00 does not preserve any custom settings such as custom SSIDs, passwords or IP Addressing. Please record these values before proceeding with the upgrade so they can be re-added once the version 2.0 upgrade has completed. Later upgrades to for example 2.1 will preserve settings.

Requirements

- Computer with LAN port running Microsoft Windows (XP or later) or OSX (10.6 or later)
- Physical Ethernet cable connection to Airconsole from Computer
- Airconsole unit running firmware version 1.04 or later
- a FAT-formatted USB thumb drive containing only the new Airconsole firmware (e.g. airconsole-2.50-web.bin)

Firmware Upgrade Method (Windows and OSX)

1. Power on the Airconsole unit and wait for it to boot
2. Ensure that your computer is connected to the Ethernet port of the Airconsole via cable only. **Connecting via WiFi is not recommended during the upgrade process.**
3. Ensure that you know the IP address of the Airconsole unit and you can connect to the web interface using the default password of "**admin**".



If the password has been changed from the default, you should change it back to "admin" (it can be changed again after the upgrade). Make a note of the current firmware version and build date. In example below the version is 1.04 and build date is 2013-11-01 (build 270).

air console

Status | Serial | LAN | Wireless | Routing | Admin

Summary - Log

Welcome to Airconsole!

The Airconsole Adaptor settings can be changed on this website to do the following:

- Change the IP Address Range used by the Adaptors DHCP Server (go to LAN tab)
- Disable the DHCP Server, and configure static IP addressing on the adaptor (go to LAN tab)
- Configure Wireless Encryption, Change the SSID, modify radio layer settings (go to Wireless tab)
- Configure Static routes for the adaptor - make the serial port available from other subnets (go to Routing tab)
- Upgrade Airconsole Firmware or perform factory reset (go to Admin tab)

Airconsole Details

Firmware Version :	1.04 (2013-11-01 build 270)
Hardware Version :	A-01
MAC Address :	00:20:0C:08:08:EA
DHCP Mode :	server

Help!
For the Airconsole user manual visit [here](#)

This page also summarises the Airconsole Software and Hardware version and the DHCP Mode Airconsole is operating in.

Certain versions of Get Console may require the latest Airconsole [Firmware](#)

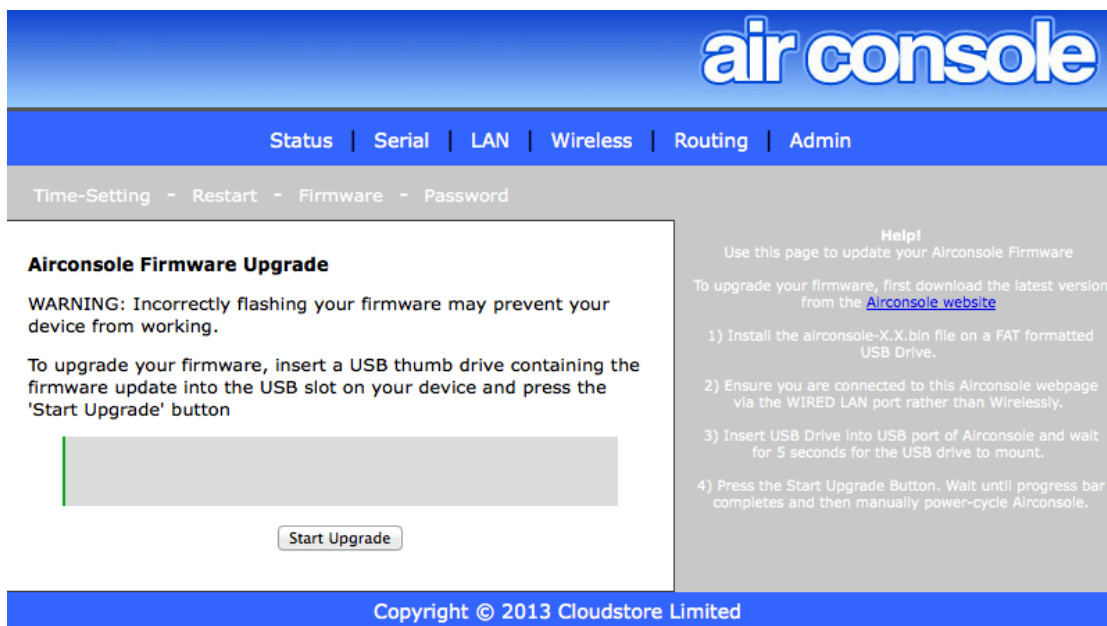
To learn more about the DHCP modes see the manual.

Copyright © 2013 Cloudstore Limited
For support please contact us at: support@get-console.com

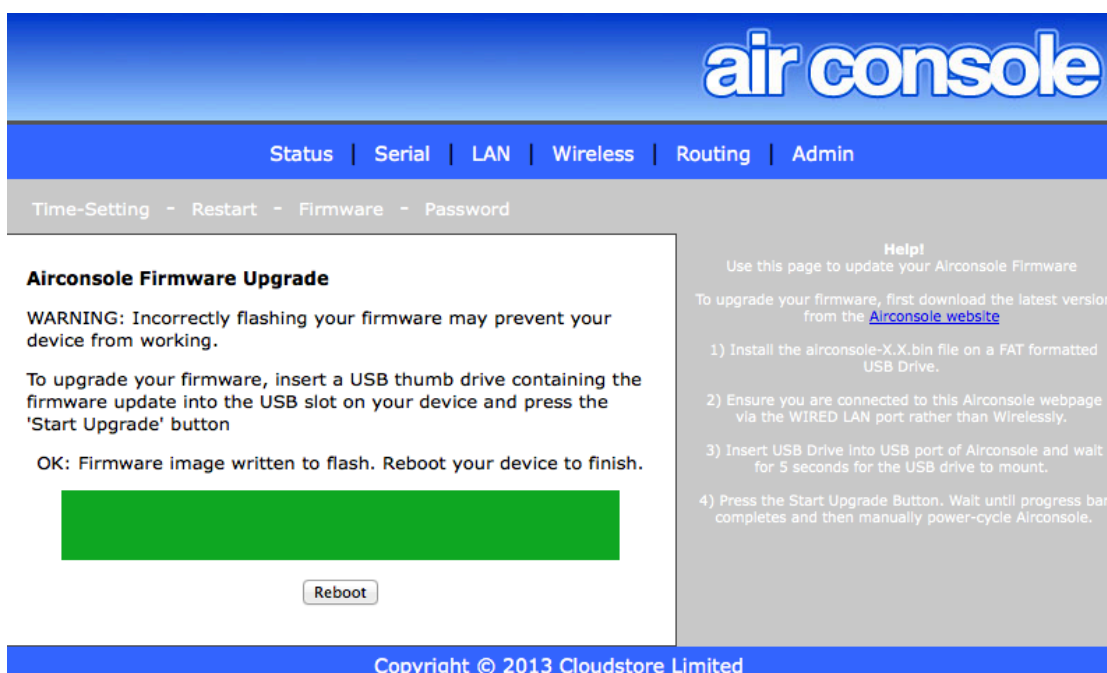
4. Copy the new Airconsole firmware file (e.g. **airconsole-2.50-web.bin**) to a **FAT-formatted** USB thumb drive. The drive should contain **no other files**



5. Connect this USB drive to the Airconsole USB port and navigate to the Admin->Firmware Page



6. Start the Firmware Upgrade



7. Once finished, you will need to **physically power-cycle** the Airconsole rather than just pressing the reboot button.
8. Once rebooted, re-login to the Airconsole home page. The firmware upgrade resets all settings back to factory defaults so the SSID, password and IP addressing will now be the factory versions. These can be changed back to any custom values that were previously set.

Airconsole Details	
Firmware Version :	2.00 (2014-02-11 build 383)
Hardware Version :	A-01

The Firmware version will now show 2.xx and the build number will be greater than 382 You can now use the new version 2.x features such as AP Client, 802.1X authentication, Internet NAT, Bluetooth and other improvements.