

STEPS IN CONFIGURING THE PRINTER THE EASIEST WAY

Step 1. Print the interface information and look for the current IP Address and MAC Address.

For Epson Model: TM-T82

- Load paper
- While pressing the Feed button, turn the printer on.
- Wait for the interface information printed.
- Press again the Feed button to finish the print.

For Epson Model: TM-T88V, TM-U220, TM-T82

- Load paper, and then turn the printer on.
- Waiting for about 20 seconds.
- Hold down the push button on the interface board with a thin tool, such as extended paper clip or a pen point, for more than 3 seconds
- Interface information is printed.

Sample printed interface information.

```
Firmware Version 6.03 ESC/POS
Mode : Normal

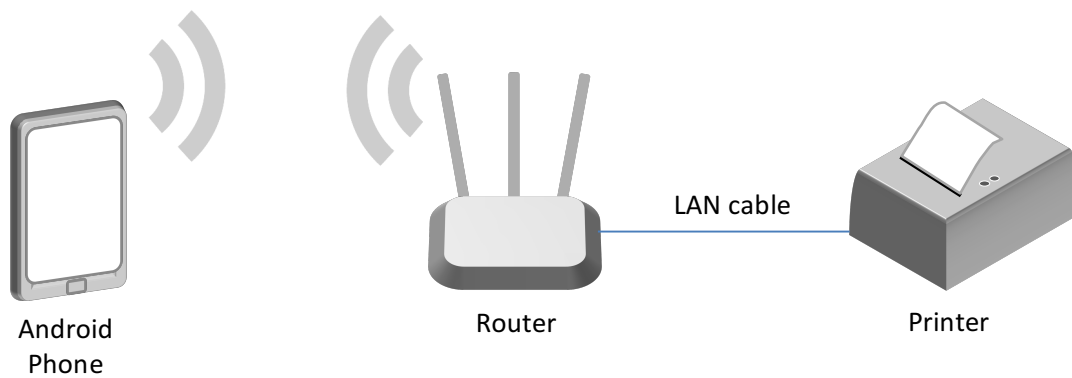
UB-E03
MAC Address 64:EB:8C:2B:3C:31 ←
Hard Version 03.00
Soft Version 01.03
Ip Address 192.168.192.168 ←
SubnetMask 255.255.255.0
Gateway 0.0.0.0

Buffer Capacity
4K bytes

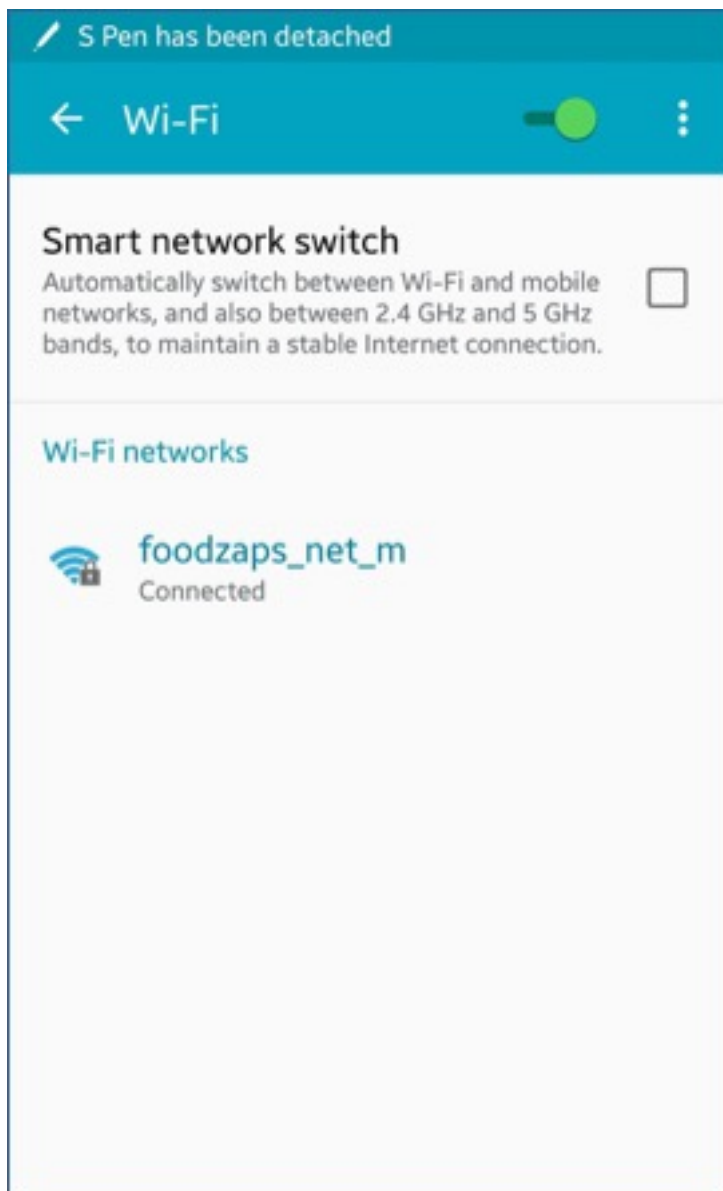
Handshaking Operation (busy condition)
Offline or receive buffer full

Resident Character
```

Step 2. Connect the printer to your existing router using LAN cable.

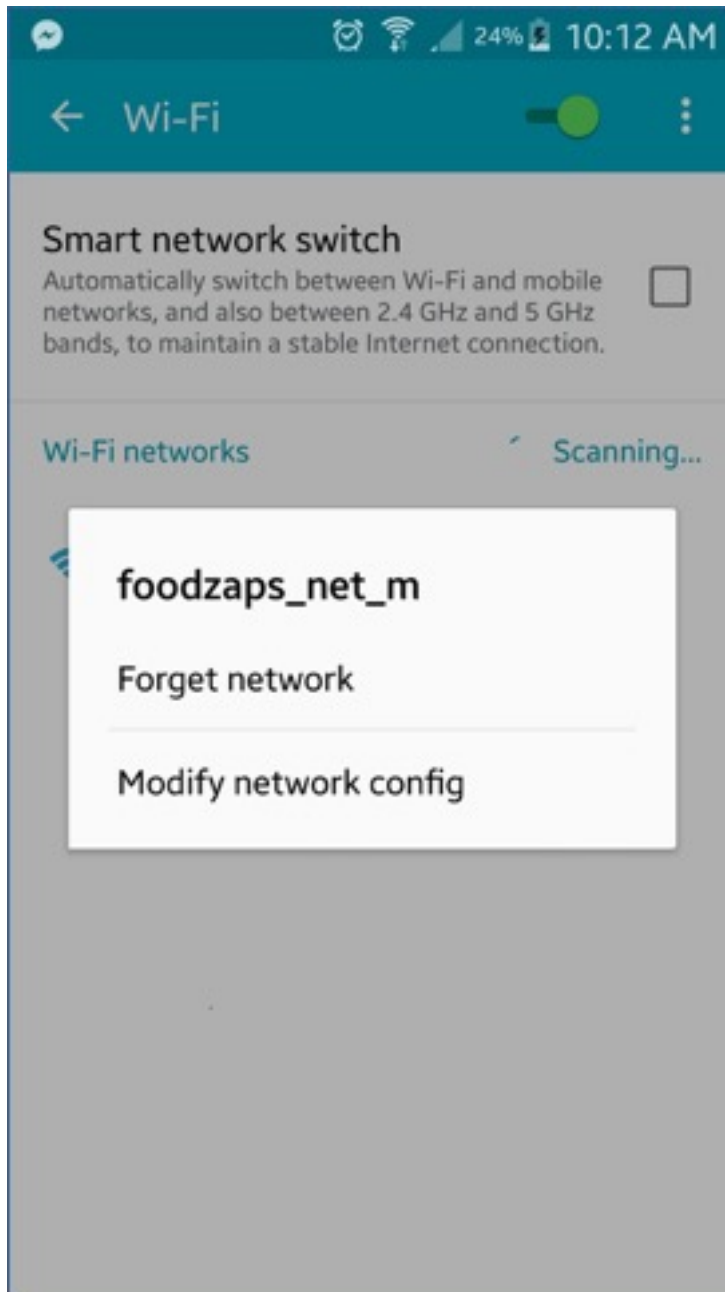


Step 3. On your Android phone Go to Settings → Wi-Fi then connect your Android to the Wi-Fi of the router.

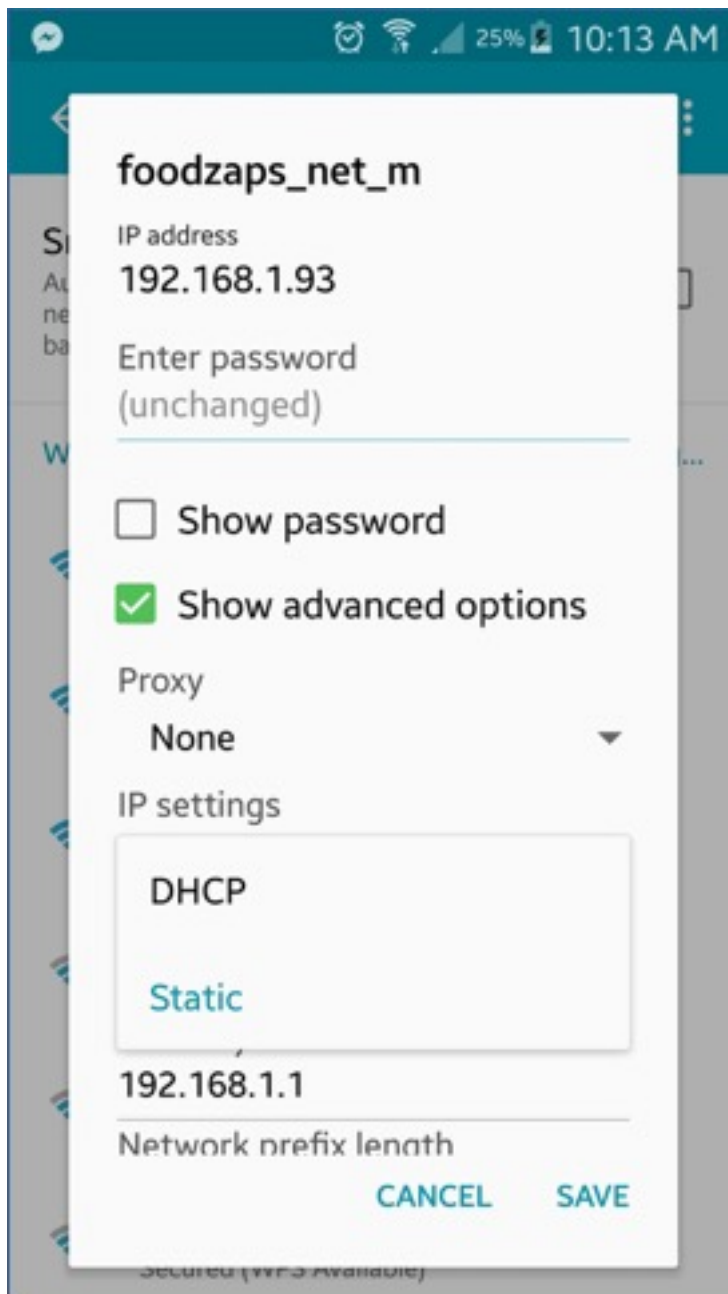


Step 4. Press continuously the W-Fi connection until a pop up selection menu will appear.

Choose “Modify network config”



Step 5. Choose “Show advance options” and under IP settings choose “Static” on the drop down menu.



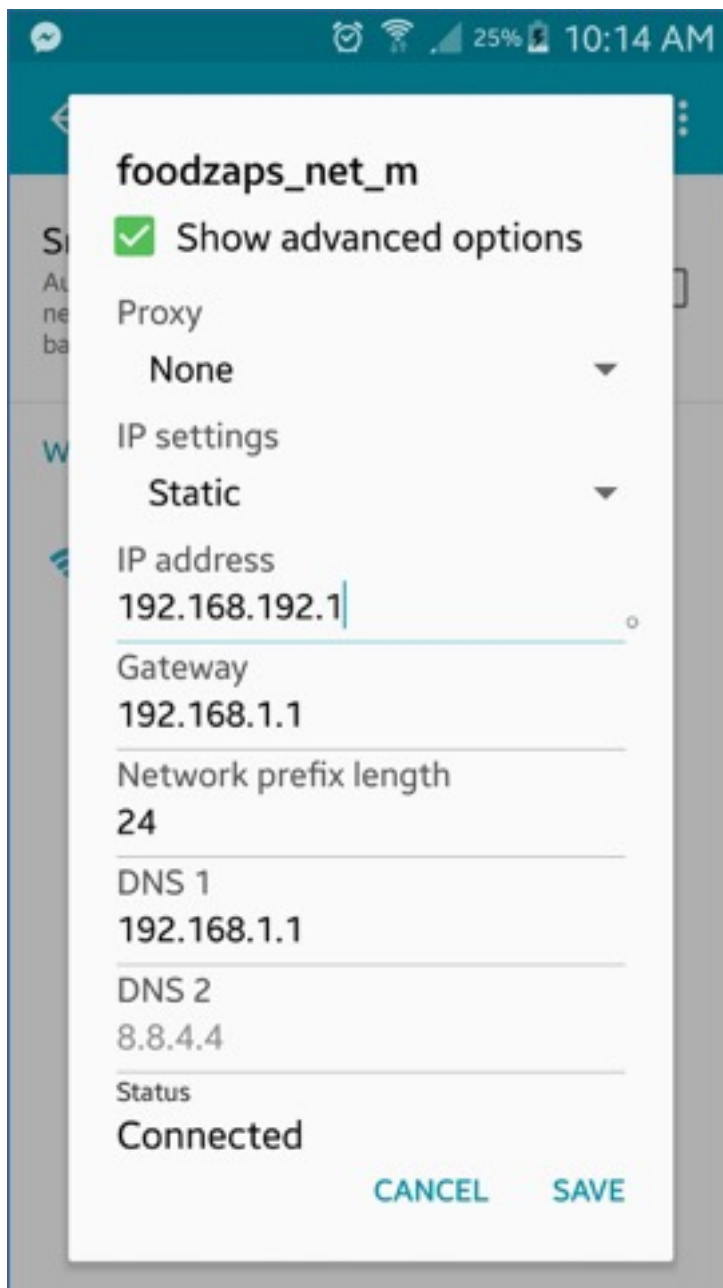
Step 6. Enter the static IP address based on the current IP address of the printer.

Example:

Printer IP address: 192.168.192.168

You can use the IP address from 192.168.192.1 to 192.168.192.254 except the IP address 192.168.192.168.

Then "Save".



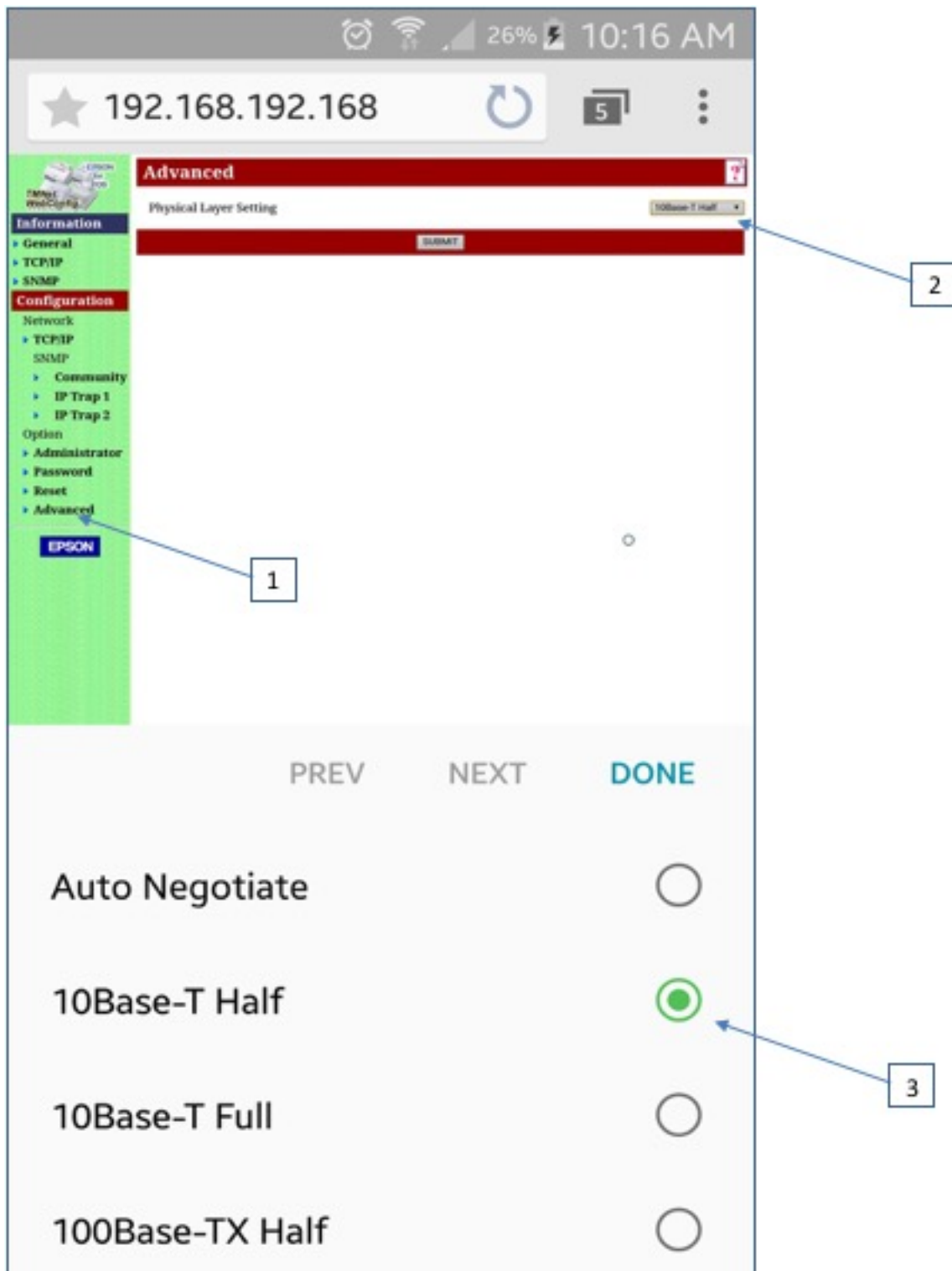
Note: If the Wi-Fi is disconnected, try to connect again.

Step 7. Connect to the printer by Opening a Web browser on your Android phone and type in the IP address of the printer.



Step 8. Go to “Advance” then choose “10Base-T Half” under Physical Layer Setting.

Press “SUBMIT” then “RESET”. Allow the printer to reboot for a few seconds.



Step 9. Under “Configuration” go to “TCP/IP”. Choose “Automatic” on the drop down menu under “Get IP Address”.

Press “SUBMIT” then “RESET”. Allow the printer to reboot for a few seconds.

Your printer now can receive IP address from you router.



Step 10. Return the IP address of your Android phone from Static to DHCP (Auto)

Do Steps 4 and 5 then select “DHCP” then “Save”.