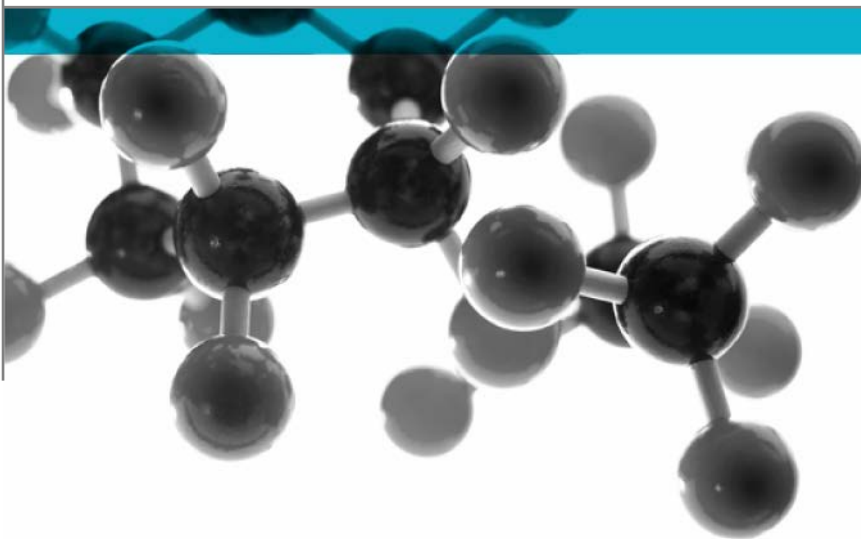


Exova Warringtonfire  
Holmesfield Road  
Warrington  
WA1 2DS  
United Kingdom

T : +44 (0) 1925 655116  
F : +44 (0) 1925 655419  
E : warrington@exova.com  
W: www.exova.com



# BS EN ISO 11925-2: 2010



## Ignitability Of Building Products Subjected To Direct Impingement Of Flame Part 2: Single Flame Source Test

A Report To: Newmor

Document Reference: 330242

Date: 6<sup>th</sup> August 2013

Issue No.: 1

Page 1

Testing  
Advising  
Assuring



## Executive Summary

**Objective** To determine the performance of the following product when tested in accordance with BS EN ISO 11925-2:2010.


Generic Description	Product reference	Thickness	Weight per unit area or density
15oz non-woven backed wallcovering bonded to one face of a fibre cement board substrate utilising a PVA based adhesive	"144756"	8.68mm*	15.97kg/m <sup>2</sup> *
<b>Individual components used to manufacture composite:</b>			
PVC film	"Vinyl"	0.19mm	1.4g/cm <sup>3</sup>
Fabric	"Light Weight"	0.15mm	0.04kg/m <sup>2</sup>
Adhesive (wallcovering to substrate)	"Dixon Turner Heavy"	Not stated	200g/m <sup>2</sup>
Primer	"ET Primaseal"	Not stated	85g/m <sup>2</sup>
Substrate	"NT D4 604"	8mm	1800kg/m <sup>3</sup>
<b>Please see pages 5 and 6 of this test report for the full description of the product tested</b>			
*determined by Exova Warringtonfire			


**Test Sponsor** Newmor, Madoc Works, Henfaes Lane, Welshpool, Montgomeryshire, SY21 7BE

**Test Results:** On each set of six specimens which were tested, the flame tip did not reach a distance of 150mm before the end of the test.

**Date of Test** 24<sup>th</sup> July 2013

## Signatories

  
 Responsible Officer  
 K. Hughes \*  
 Technical Officer

  
 Authorised  
 S Deeming\*  
 Operations Manager

\* For and on behalf of **Exova Warringtonfire**.

Report Issued: 6<sup>th</sup> August 2013

This version of the report has been produced from a .pdf format electronic file that has been provided by **Exova Warringtonfire** to the sponsor of the report and must only be reproduced in full. Extracts or abridgements of reports must not be published without permission of **Exova Warringtonfire**.

Document No.: 330242  
 Author: K Hughes  
 Client: Newmor

Page No.: 2 of 9  
 Issue Date: 6<sup>th</sup> August 2013  
 Issue No.: 1



<b>CONTENTS</b>	<b>PAGE NO.</b>
<b>EXECUTIVE SUMMARY .....</b>	<b>2</b>
<b>SIGNATORIES .....</b>	<b>2</b>
<b>TEST DETAILS .....</b>	<b>4</b>
<b>DESCRIPTION OF TEST SPECIMENS .....</b>	<b>5</b>
<b>TEST RESULTS.....</b>	<b>7</b>
<b>TABLE 1 .....</b>	<b>8</b>
<b>TABLE 2.....</b>	<b>8</b>
<b>REVISION HISTORY.....</b>	<b>9</b>



## Test Details

<b>Purpose of test</b>	<p>To determine the performance of specimens of a product when they are subjected to the conditions of the test specified in BS EN ISO 11925-2:2010 "Reaction to Fire tests - Ignitability Of Building Products Subjected to Direct Impingement of Flame – Part 2: Single Flame Source Test".</p> <p>The test was performed in accordance with the procedure specified in BS EN ISO 11925-2:2010 Reaction to Fire Tests - Ignitability of Building Products subjected to direct impingement of flame – Part 2: Single Flame Source Test, and this report should be read in conjunction with that BS EN ISO Standard.</p>
<b>Scope of test</b>	<p>BS EN ISO 11925-2 specifies a method of test for determining the ignitability of building products by direct small flame impingement under zero impressed irradiance using specimens tested in a vertical orientation.</p>
<b>Fire test study group/EGOLF</b>	<p>Certain aspects of some fire test specifications are open to different interpretations. The Fire Test Study Group and EGOLF have identified a number of such areas and have agreed Resolutions which define common agreement of interpretations between fire test laboratories which are members of the Groups. Where such Resolutions are applicable to this test they have been followed.</p>
<b>Instruction to test</b>	<p>The test was conducted on the 24<sup>th</sup> July 2013 at the request of Newmor, the sponsor of the test.</p>
<b>Provision of test specimens</b>	<p>The specimens were supplied by the sponsor of the test. <b>Exova Warringtonfire</b> was not involved in any selection or sampling procedure. The sponsor supplied the adhesive and <b>Exova Warringtonfire</b> supplied the substrate, primer and bonded the composite together.</p>
<b>Conditioning of specimens</b>	<p>The specimens were received on the 13<sup>th</sup> June 2013.</p> <p>Prior to test the specimens were stored for two days in a standard atmosphere as defined in BS EN 13238:2010 Conditioning Procedures and General Rules for selection of substrates until constant mass was achieved.</p>
<b>Intended application</b>	<p>Internal wall lining.</p>
<b>Substrate</b>	<p>The specimens were tested bonded to a fibre cement board substrate.</p>
<b>Flame application time</b>	<p>The flame was applied for 30 seconds.</p>

## Description of Test Specimens

The description of the specimens given below has been prepared from information provided by the sponsor of the test. All values quoted are nominal, unless tolerances are given.

General description	15oz non-woven backed wallcovering bonded to one face of a fibre cement board substrate utilising a PVA based adhesive	
Product reference of overall composite	"144756"	
Name of manufacturer of overall composite	"Roysons"	
Thickness of wallcovering	0.37mm (stated by sponsor) 0.35mm (determined by <b>Exova Warringtonfire</b> )	
Weight per unit area of wallcovering	0.50kg/m <sup>2</sup> (stated by sponsor) 0.33kg/m <sup>2</sup> (determined by <b>Exova Warringtonfire</b> )	
Overall thickness of composite	8.68mm (determined by <b>Exova Warringtonfire</b> )	
Overall weight per unit area of composite	15.97kg/m <sup>2</sup> (determined by <b>Exova Warringtonfire</b> )	
PVC film	Generic type	Polyvinyl chloride (PVC) film
	Product reference	"Vinyl"
	Name of manufacturer	<b>See Note 1 below</b>
	Colour reference	"Off White"
	Number of coats	One
	Thickness	0.19mm
	Density	1.4g/cm <sup>3</sup>
	Application method	Lamination to backing
	Curing process per coat	Hot lamination – 300°F for a duration of 30 seconds
Flame retardant details	<b>See Note 2 below</b>	
Fabric	Generic type	Polyester cellulose non-woven
	Product reference	"Light Weight"
	Name of manufacturer	<b>See Note 1 below</b>
	Thickness	0.15mm
	Weight per unit area	0.04kg/m <sup>2</sup>
	Colour reference	"White"
	Pattern reference	"Plain"
Flame retardant details	<b>See Note 2 below</b>	
Adhesive	Generic type	Polyvinyl acetate (PVA) / starch / water
	Product reference	"Dixon Turner Heavy"
	Name of manufacturer	<b>See Note 1 below</b>
	Application rate	200g/m <sup>2</sup>
	Application method	Lambswool roller
	Flame retardant details	<b>See Note 2 below</b>
Curing process	Air dry	

Continued on next page

Primer	Generic type	Polyvinyl acetate (PVA) / starch / water
	Product reference	"ET Primaseal"
	Name of manufacturer	<b>See Note 1 below</b>
	Number of coats	One
	Application rate	85g/m <sup>2</sup>
	Application method	Lambswool roller
	Curing process per coat	Air dry
	Flame retardant details	<b>See Note 2 below</b>
Substrate	Generic type	Fibre cement board
	Product reference	"NT D4 604"
	Name of manufacturer	Scheeders van de Kerkhove (SVK)
	Thickness	8mm
	Density	1800kg/m <sup>3</sup>
	Colour reference	"Grey"
Flame retardant details		The substrate is inherently flame retardant
Brief description of manufacturing process		Laminate vinyl with water-based ink to woven backing

**Note 1. The sponsor was unwilling to provide this information.**

**Note 2. The sponsor of the test has confirmed that no flame retardant additive were utilised in the production of the product / component.**

## Test Results

---

### Number of specimens tested

Six specimens were tested, each of which were subjected to surface exposure to flame with the decorative face exposed.

Six specimens were tested, each of which were subjected to edge exposure to flame with the decorative face exposed.

### Applicability of test results

The test results relate to the behaviour of the test specimens of a product under the particular conditions of the test, they are not intended to be the sole criterion for assessing the potential fire hazard of the product in use.

The test results relate only to the specimens of the product in the form in which they were tested. Small differences in the composition or thickness of the product may significantly affect the performance during the test and may therefore invalidate the test results. Care should be taken to ensure that any product which is supplied or used is fully represented by the specimens which were tested.

The test results for the individual specimens, together with observations made during the test and comments on any difficulties encountered during the test are given in Tables 1 and 2.

**On each set of six specimens which were tested, the flame tip did not reach a distance of 150mm before the end of the test.**

### Validity

The specification and interpretation of fire test methods are the subject of on going development and refinement. Changes in associated legislation may also occur. For these reasons it is recommended that the relevance of test reports over five years old should be considered by the user. The laboratory that issued the report will be able to offer, on behalf of the legal owner, a review of the procedures adopted for a particular test to ensure that they are consistent with current practices, and if required may endorse the test report.

This report may only be reproduced in full. Extracts or abridgements shall not be published without permission of **Exova Warringtonfire**.

**Table 1**
**Test Flame Application Position - Surface of decorative face**

Specimen No.	Ignition Yes/No	Time from start of test for flame tip to reach 150mm (seconds)	Extent of Flame Spread (mm)	Flaming Debris	Glowing	Extent of Damaged Area (mm)	
						Height	Width
1	No	Did not reach	Nil	None	None	20	10
2	No	Did not reach	Nil	None	None	20	8
3	No	Did not reach	Nil	None	None	22	10
4	No	Did not reach	Nil	None	None	20	10
5	No	Did not reach	Nil	None	None	25	12
6	No	Did not reach	Nil	None	None	23	11

**Table 2**
**Test Flame Application Position - Edge of decorative face**

Specimen No.	Ignition Yes/No	Time from start of test for flame tip to reach 150mm (seconds)	Extent of Flame Spread (mm)	Flaming Debris	Glowing	Extent of Damaged Area (mm)	
						Height	Width
1	No	Did not reach	Nil	None	None	12	20
2	Yes	Did not reach	5	None	None	15	17
3	No	Did not reach	Nil	None	None	15	20
4	No	Did not reach	Nil	None	None	20	22
5	No	Did not reach	Nil	None	None	15	18
6	No	Did not reach	Nil	None	None	15	20



## Revision History

Issue No :	Re-issue Date :
Revised By:	Approved By:
Reason for Revision:	

Issue No :	Re-issue Date :
Revised By:	Approved By:
Reason for Revision:	