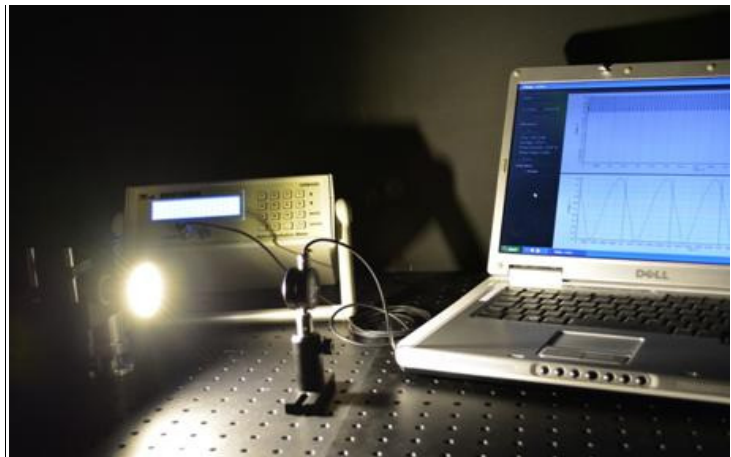




IDR300-PSL Flicker Add-On Measurement of Photometric Flicker



USER MANUAL

Version 1 – July 2015

Bentham Instruments Limited

2 Boulton Road, Reading, Berkshire, RG2 0NH, U.K.

Tel: +44 (0)118 975 1355 Fax: +44 (0)118 931 2971

Email: sales@bentham.co.uk Internet: www.bentham.co.uk

TABLE OF CONTENTS

<i>1 Introduction</i>	<i>4</i>
<i>2 Guarantee</i>	<i>4</i>
<i>3 Notice for Clients in European Union</i>	<i>5</i>
<i>4 Contact Bentham</i>	<i>5</i>
<i>5 System Requirements</i>	<i>5</i>
<i>6 System Components</i>	<i>6</i>
<i>7 Hardware & Software Installation</i>	<i>6</i>
<i>8 Measuring Photometric Flicker</i>	<i>8</i>
<i>10 Troubleshooting</i>	<i>11</i>

1 INTRODUCTION

Thank you for your purchase of the Bentham Flicker Add-on to the IDR300-PSL, for the measurement of photometric flicker of sources employed in lighting. The documentation for this product consists of this User's Manual with reference made to specific component manuals where further information is sought. To get the most from this measurement system, please be sure to read all instructions thoroughly and keep them where they will be read by all who use the product.

2 GUARANTEE

Bentham Instruments warrants each instrument to be free of defects in material and workmanship for a period of one year after shipment to the original purchaser. Liability under this warranty is limited to repairing or adjusting any instrument returned to the factory for that purpose. The warranty of this instrument is void if the instrument has been modified other than in accordance with written instructions from Bentham, or if defect or failure is judged by Bentham to be caused by abnormal conditions of operation, storage or transportation.

This warranty is subject to verification by Bentham, that a defect or failure exists, and to compliance by the original purchaser with the following instructions.

Before returning the instrument, notify Bentham with full details of the problem, including model number and serial number of the instrument involved. After receiving the above information, Bentham will issue an RMA reference number and provide shipping instructions.

After receipt of Shipping instructions, ship the instrument "carriage paid" to Bentham. Full liability for damage during shipment is borne by the purchaser. It is recommended that instruments shipped to us be fully insured and packed surrounded by at least two inches of shock-absorbing material. Specific transit packaging as used in Monochromators etc. must be installed.

Bentham reserves the right to make changes in design at any time without incurring any obligation to install same on units previously purchased.

This warranty is expressly in lieu of all other obligations or liabilities on the part of Bentham, and Bentham neither assumes, nor authorises any other person to assume for it, any liability in connection with the sales of Bentham's products.

NOTHING IN THIS GUARANTEE AFFECTS YOUR STATUTORY RIGHTS.

3 NOTICE FOR CLIENTS IN EUROPEAN UNION



This product is designated for separate collection at an appropriate collection point. Do not dispose of as household waste.

Bentham are fully WEEE compliant, our registration number is WEE/CB0003ZR.

Should you need to dispose of our equipment please telephone +44 (0) 113 385 4352/4356, quoting account number 135419

4 CONTACT BENTHAM

Bentham Instruments Limited
2, Boulton Road,
Reading,
Berkshire,
RG2 0NH,
UK

technicalsupport@bentham.co.uk

www.bentham.co.uk

T:+44 (0)118 975 1355

5 SYSTEM REQUIREMENTS

Computer with RAM/ performance suitable for desktop applications suitable

Windows 7, Windows 8 (32-/64-bit) operating systems

2x USB- ports

6 SYSTEM COMPONENTS

1x 417 including 477 amplifier



1x DH400-VL Close Match Photometric Detector



1x Flicker software CD



1x USB Instruments Stingray Oscilloscope



- 2 x USB cables
- 1x BNC cable
- (Computer not supplied)

7 HARDWARE & SOFTWARE INSTALLATION



Figure 1: IDR300-PSL Flicker Add-On (photo to be updated)

The IDR300-PSL Flicker add-on may be used to measure the photometric flicker of sources under test either by illuminating the photometric detector directly (on a suitable bench in a dark room) or by mounting the photometric detector on a suitable integrating sphere output port.

- 1 Power on the 417 detection electronics using the provided mains cable. Connect by USB to the controlling computer. The hardware will automatically be detected and installed by Windows.

2 Connect the USB Instruments USB oscilloscope to the controlling computer via USB. The hardware will automatically be detected and installed by Windows.

3 Connect the DH400_VL photometric detector to 477 module input 2, the lower of the two inputs of the 4772.

4 Remove the cap from the DH400_VL photometric detector and install as required.

For bench-top use, a M6 threaded radial hole is provided.

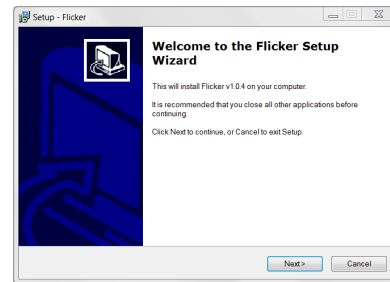
5 Connect the 477 output to the oscilloscope input 1 (labelled)



6 Insert the software CD provided into CD drive, and explore to locate Flicker installer folder.

7 Run setup, follow the installation procedure, no intervention required other than hitting "next" and selecting whether or not desktop short cut is sought.

The Flicker program will be installed to C:\Program Files\Bentham\Benwin+ (Program Files x86 for 64-bit OS).



8 Where selected, a desktop short-cut will also be created.



9 The system is now ready to use.

8 MEASURING PHOTOMETRIC FLICKER

Photometric flicker is evaluated by temporally resolving photometrically-weighted lamp emission, by the determination of the repeated pattern, and performing calculations thereupon.

The temporal resolved emission is measured by detecting lamp output with a photometric detector, passing the signal through the 477 trans-impedance (current-to-voltage) amplifier and measuring the output of which with an oscilloscope.

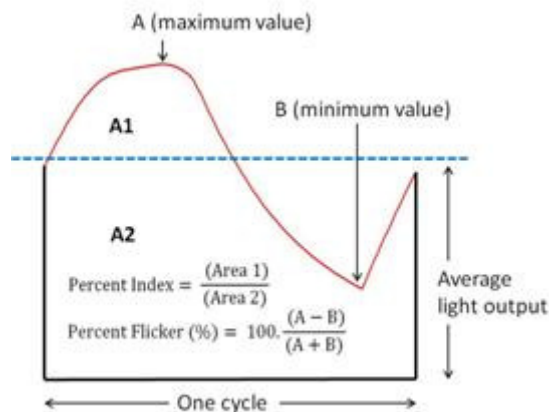
Percentage flicker is computed from the maximum value, A, and minimum value, B:-

$$\text{Percentage Flicker (\%)} = 100 \cdot \frac{(A - B)}{(A + B)}$$

Flicker index is computed from determining the average signal, then comparing the area, A1, above the average, and the area, A2, below the average:-

$$\text{Flicker Index} = \frac{A1}{(A1 + A2)}$$

These can be viewed graphically in the following:-



Whilst flicker is perceived by the eye, and is strictly defined by time resolved source luminance, absolute units are not important in these relative calculations. Whilst the measurement geometry may be chosen-performing measurements of luminance, total luminous flux or illuminance, the reported values is simply voltage measured by the oscilloscope as a function of time.

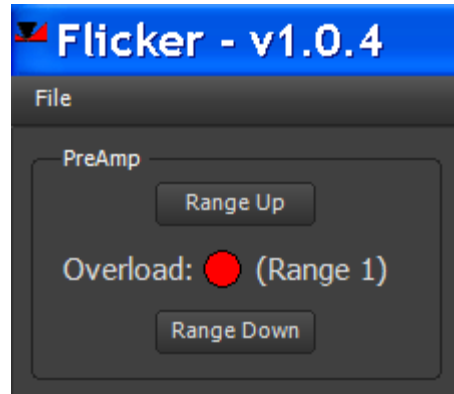
- 1 Power on the 417, ensuring 417 and oscilloscope connected to USB.

Run flicker software and power on lamp under test.

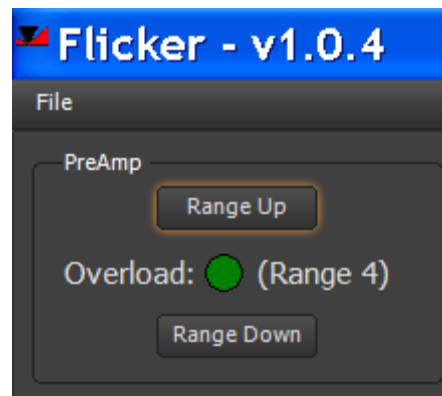


- 2 The amplifier in the 477 has six decades of gain, ranging is performed manually.

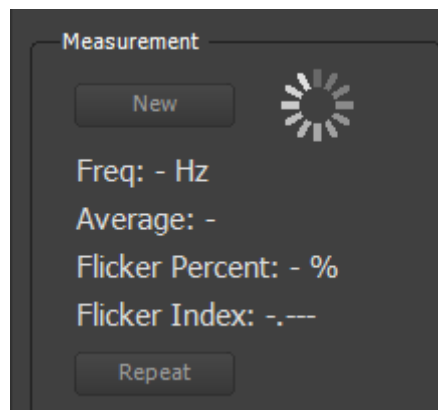
If the red overload flag is shown, hit range up, range- by- range to remove overload.



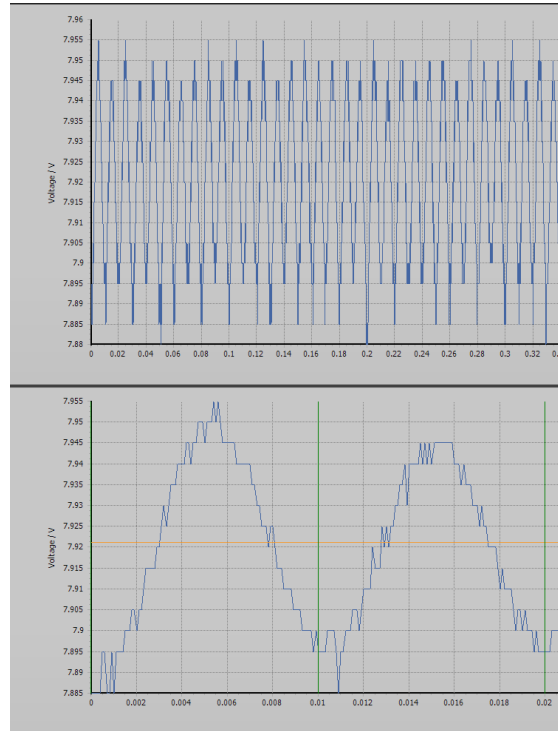
- 3 Stop changing range on the lowest range value that changes the flag to green. In this manner, maximum possible gain is provided.



- 4 When ready, hit "New" in the measurement tab.

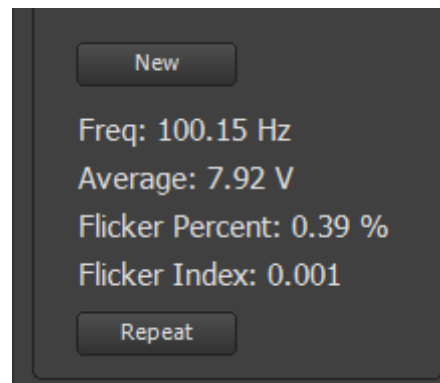


- 5 A graphical representation of the evolution of source output as a function of time, lower view zoomed in area.

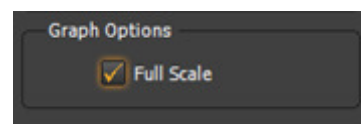


- 6 Results will be shown in the measurement tab.

Where required, one can repeat the measurement as necessary.

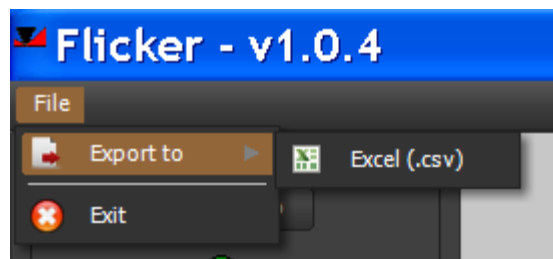


- 7 Where desired, the graphical representation may be set to range the y-axis as full scale rather than around measured value.



- 8 One can export the results to a csv file using file/ export/ Excel (.csv).

The csv file records all calculation results in addition to the raw data of voltage against time.



10 TROUBLESHOOTING

The following is a list of some more common problems encountered with Flicker Add-On, by no means exhaustive. Please contact Bentham should any other problem arise.

Problem	Possible error/ solution
Software does not initialize	✓ Ensure all units are switched on and USB connection OK
On scanning, no signal seen	✓ Ensure DH400_VL is connected to 477 input 1 ✓ Ensure 477 output connected to oscilloscope input 1 ✓ Ensure lamps are powered on ✓ Ensure amplifier not in overload