



Z- axis Height Adjustment Instruction

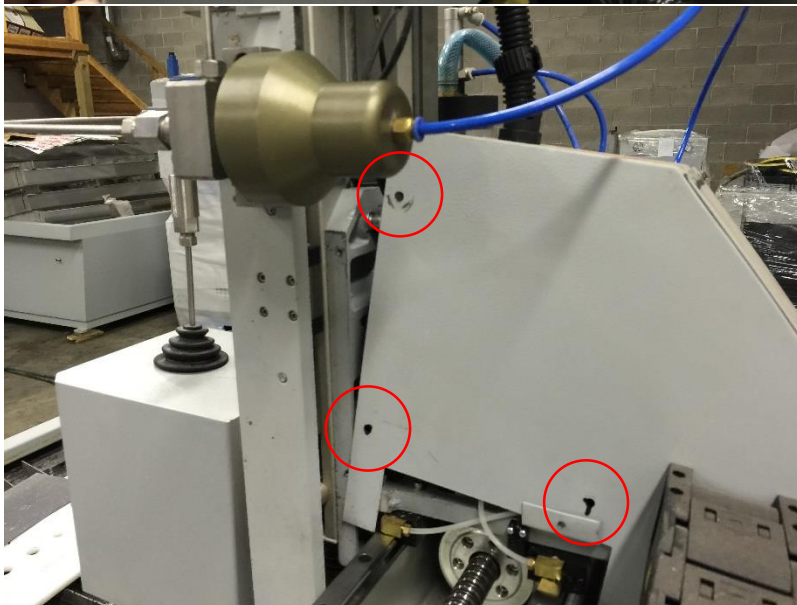
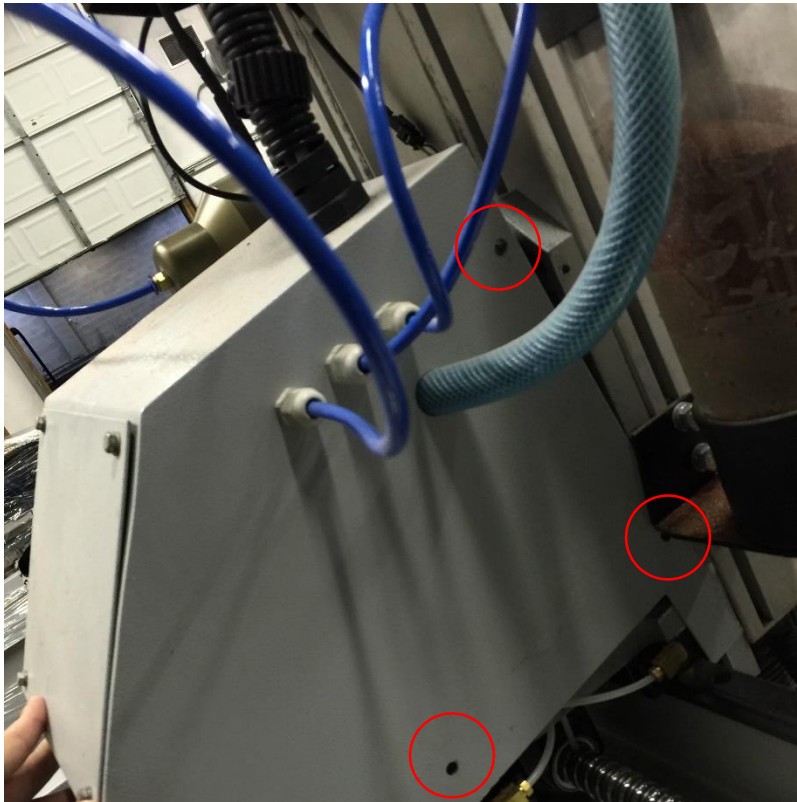
Problem description

If after installation, the cutting head cannot be moved to a proper position (too high or under water), try to follow the solution below to adjust the height of the Z- axis to avoid damage to the cutting head.



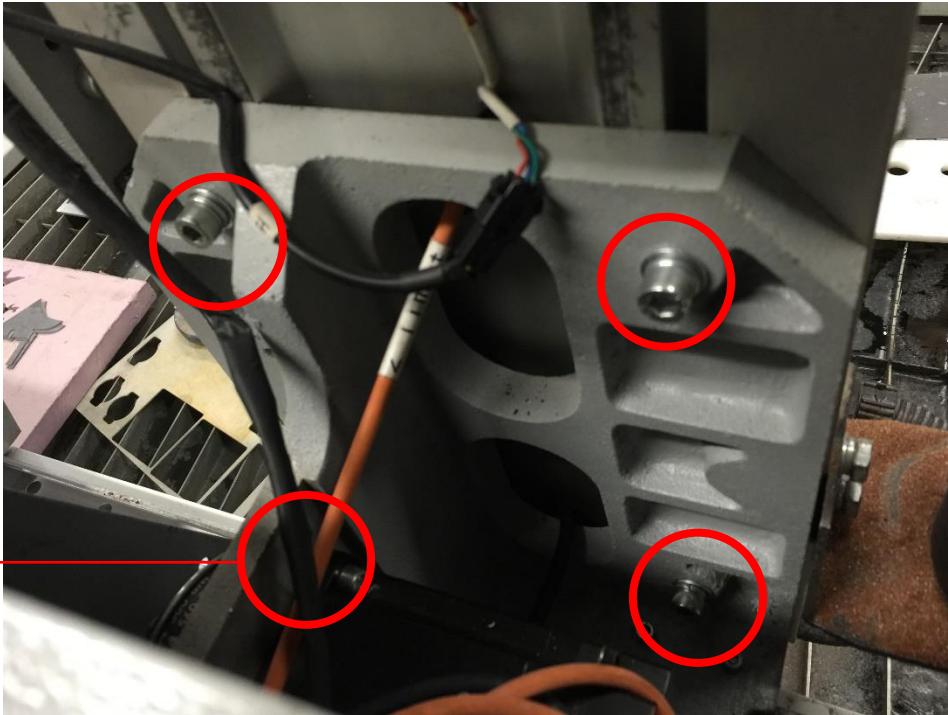
Solution

1. Unscrew all the screws around the cover like shown the red circles below:





2. Remove the cover
3. **Loosen** the remaining 4 screws while **holding the Z-axis** in case of its dropping off. The screws are shown in the circles below. Then adjust the Z- axis to a proper height.
4. Tighten the screws and install the cover back.



The other side

