

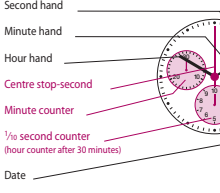
Battery type: 395 (diameter 9.5mm x 2.6mm / SR 927 SW)
Accuracy: +20 / -10 seconds per month

In case your watch needs to be repaired or to raise claims under a guarantee, please contact the point of sales

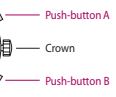


Description of the display and control buttons

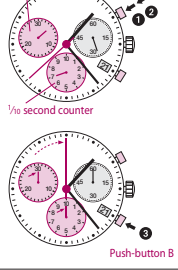
Display elements



Control buttons



Minute counter Push-button A



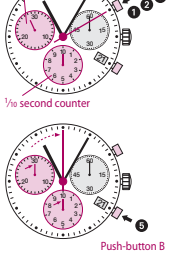
Chronograph: Basic function

(Start / Stop / Reset)

Example:

- Start: Press push-button A.
- Stop: to stop the timing, press push-button A once more and read the 3 chronograph counters: 4 min / 38 sek / 1/2 sec
- Zero positioning: Press push-button B. (The 3 chronograph hands will be reset to their zero positions).

Minute counter Push-button A



Chronograph: Accumulated timing

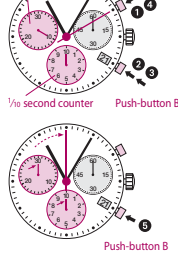
Example:

- Start: (start timing)
- Stop: (e.g. 15 min 5 sec following)
- Restart: (timing is resumed)
- Stop: (e.g. 13 min 5 sec following = 28 min 10 sec (The accumulated measured time is shown))
- Reset: The 3 chronograph hands are returned to their zero positions.

Please note:

* Following **4**, the accumulation of the timing can be continued by pressing push-button A (Restart / Stop, Restart / Stop, ...)

Minute counter Push-button A



Chronograph: Intermediate or interval timing

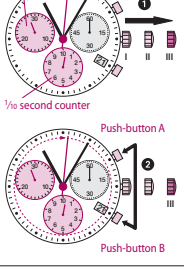
Example:

- Start: (start timing)
- Display interval: e.g. 10 minutes 10 seconds (timing continues in the background)
- Making up the measured time: (the 3 chronograph hands are quickly advanced to the ongoing measured time).
- Stop: (Final time is displayed)
- Reset: The 3 chronograph hands are returned to their zero position

Please note:

* Following **3**, further intervals or intermediates can be displayed by pressing push-button B (display interval / make up measured time, ...)

Minute counter Centre stop-second 1/2 second counter



Adjusting the chronograph hands to zero position

Example:
One or several chronograph hands are not in their correct zero positions and have to be adjusted (e.g. following a battery change).

- Pull out the crown to position III (all 3 chronograph hands are in their correct or incorrect zero position).
- Keep push-buttons A and B depressed simultaneously for at least 2 seconds (the centre stop-second rotates by 360° → corrective mode is activated).

Adjusting the centre stop second

Single step: A 1 x short
Continuous: A long

Adjusting the next hand

Single step: A 1 x short
Continuous: A long

Adjusting the 1/2 second counter hand (position 6h)

Single step: A 1 x short
Continuous: A long

Adjusting the next hand

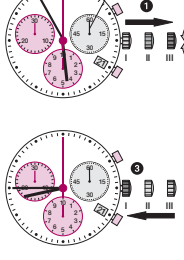
Single step: A 1 x short
Continuous: A long

Adjusting the minute counter (position 9h)

Single step: A 1 x short
Continuous: A long

- Returning the crown to position I
Termination of the chronograph hands adjustment (can be carried out at any time).

Second hand



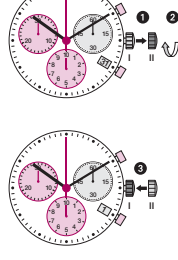
Setting the time

- Pull out the crown to position III (the watch stops).
- Turn the crown until you reach the correct time 8:45.
- Push the crown back into position I.

Please note:

* In order to set the time to the exact second, **1** must be pulled out when the second hand is in position 60s (0). Once the hour and minute hands have been set, **3** must be pushed back into position at the exact second.

Second hand



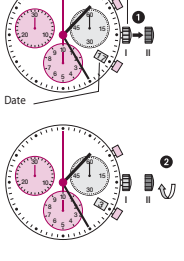
Setting the date (quick mode)

- Pull out the crown to position II (the watch continues to run).
- Turn the crown until the correct date 14 appears.
- Push the crown back into position I.

Please note:

The date can be changed during the date changing phase between 9:00 PM and 12:00 PM; please note that the date must be set to the date of the following day as in this case the automatic date changing does not occur at midnight.

Crown

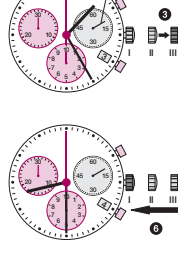


Setting the date/time

Example:
- Date / time on the watch: 17 / 1:25 AM
- Present date / time: 14 / 8:30 PM

- Pull out the crown to position II (the watch continues to run).
- Turn the crown until yesterday's date appears 13.

Second hand



- Pull out the crown to position III (the watch stops).
- Turn the crown until the correct date 14 appears.
- Continue to turn the crown until the correct time 8:30 PM appears.
- Push the crown back into position I.

Please note:

* To set your watch to the exact second, please refer to the chapter entitled 'setting the times.'
** Please observe the AM/PM clock rhythm.