

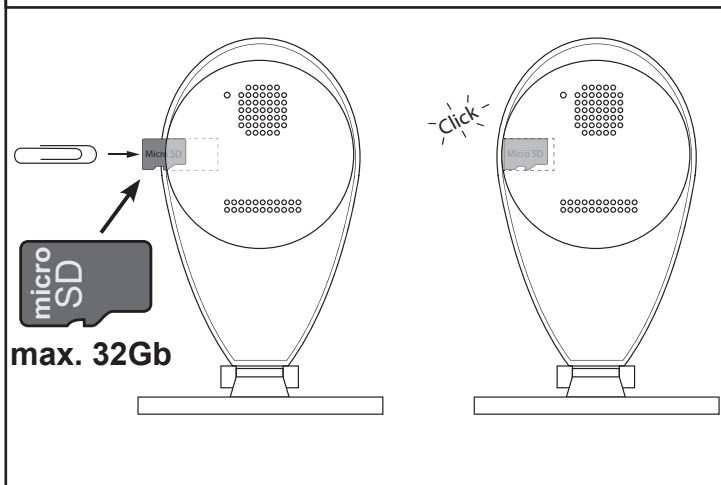
- |                   |                   |
|-------------------|-------------------|
| 1. IR sensor      | 1. IR sensor      |
| 2. lens           | 2. lens           |
| 3. IR Led's       | 3. IR leds        |
| 4. indicatie LED  | 4. indication led |
| 5. scharnier      | 5. hinge          |
| 6. voet           | 6. base           |
| 7. voedingsingang | 7. power entree   |
| 8. SD-kaart slot  | 8. SD card slot   |
| 9. luidspreker    | 9. loudspeaker    |
| 10. microfoon     | 10. microphone    |
| 11. reset toets   | 11. Reset button  |

- |                        |                                |
|------------------------|--------------------------------|
| 1. IR-Sensor           | 1. capteur infrarouge          |
| 2. Objectiv            | 2. objectif                    |
| 3. IR-Leds             | 3. Leds IR                     |
| 4. LED-Anzeige         | 4. affichage LED               |
| 5. Scharnier           | 5. charnière                   |
| 6. Fuß                 | 6. pédestre                    |
| 7. Stromeingang        | 7. entrée de puissance         |
| 8. SD-Kartensteckplatz | 8. Fente pour carte SD         |
| 9. Lautsprecher        | 9. haut-parleur                |
| 10. Mikrofon           | 10. microphone                 |
| 11. Reset-Taste        | 11. Bouton de réinitialisation |

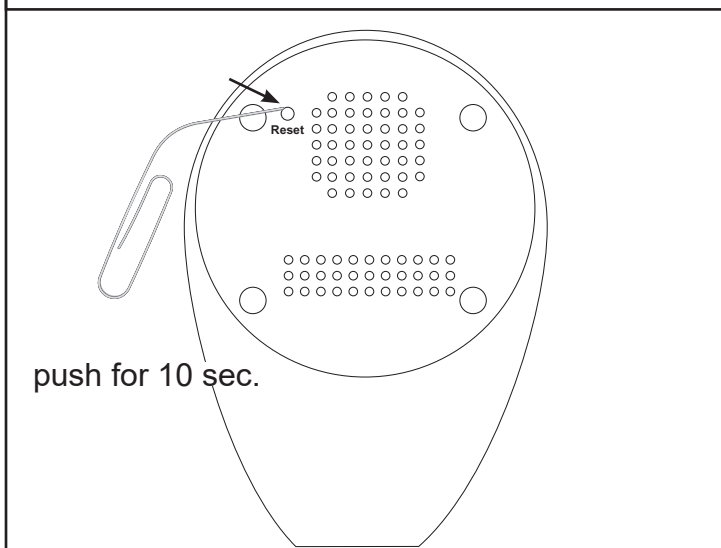
**Indication LED.**

Red:	no wifi conection
Blue blink:	searching for router
Blue continue:	wifi connection with router.

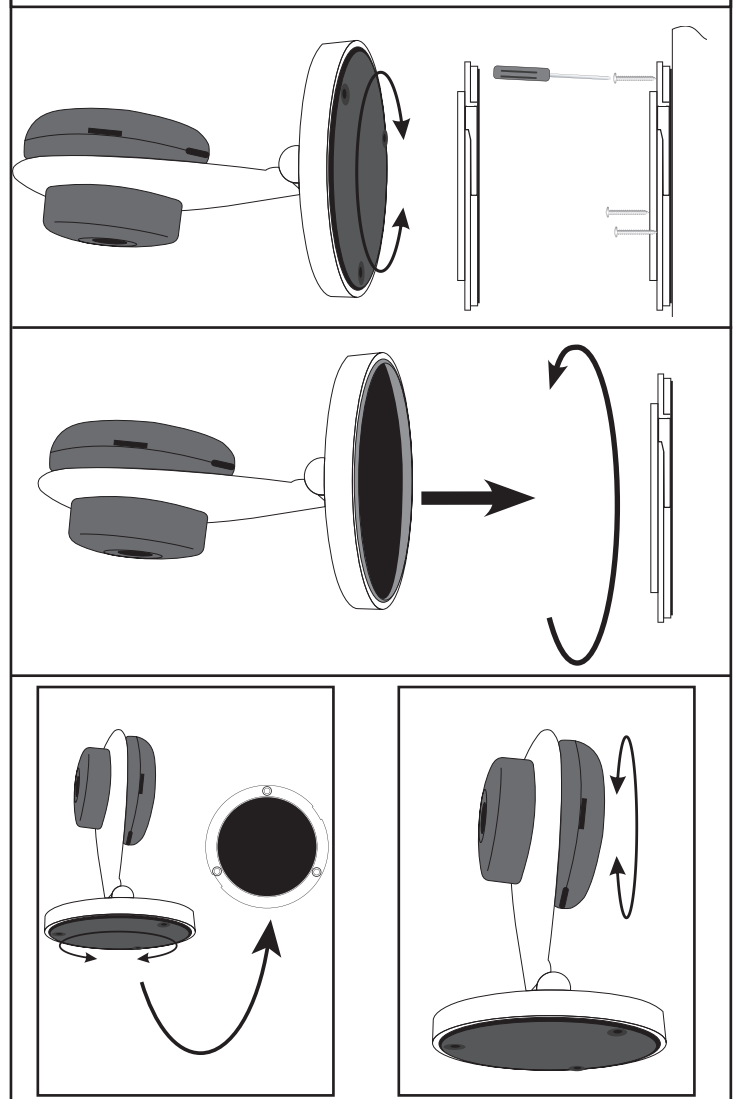
**SD-Card**



**RESET**



**Wall mount**



## DECLARATION OF CONFORMITY:

This equipment complies with the essential requirements and provisions as described in the European Directive 2014/53/EU.

The declaration of conformity is available at:

<http://DOC.hesdo.com/DVC-105IP-DOC.pdf>

Frequentie : 2407 – 2475 MHz

Maximum Vermogen : < 20 dBm

# Alecto<sup>®</sup>

Service





Help





**WWW.ALECTO.NL**  
**SERVICE@ALECTO.NL**



**Hesdo, Australiëlaan 1**  
**5232 BB, 's-Hertogenbosch**  
**The Netherlands**

v3.0

