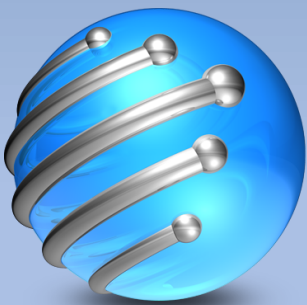
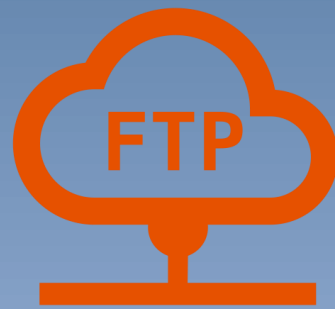


FTP WINDOWS



globalifecycle
SOLUTIONS-EMEA

Introduction:

This manual will instruct how to setup a FTP server Windows.

This will apply Windows 10 Pro, Windows 2012 and 2016. But might not be limited to those versions.

Each Windows version and/or release might have slightly different settings or locations of the buttons. In general it should be all quite similar.

Contact support@global-emea.com if you encounter any issue.

The FTP server should be in your 'normal' network, the same as the network as the cloud licenses are consumed in the PXE server or from the stand alone machines.

! Important notes !

In this manual I have used the IP 192.168.3.1, you can use any IP in your network.

The login details for FTP are the login for the machine itself. If you want you can create a new user and use those credentials for FTP.

The saving folder will be placed on the desktop and named: WipeReports.

The location and name of the folder can be changed while setting this up.

Pro-tip: After opening the Control panel for the first time, you can pin it to the task bar. As you'll need to open it a few times it might be helpful and time saving.

Step 1. Set a static IP

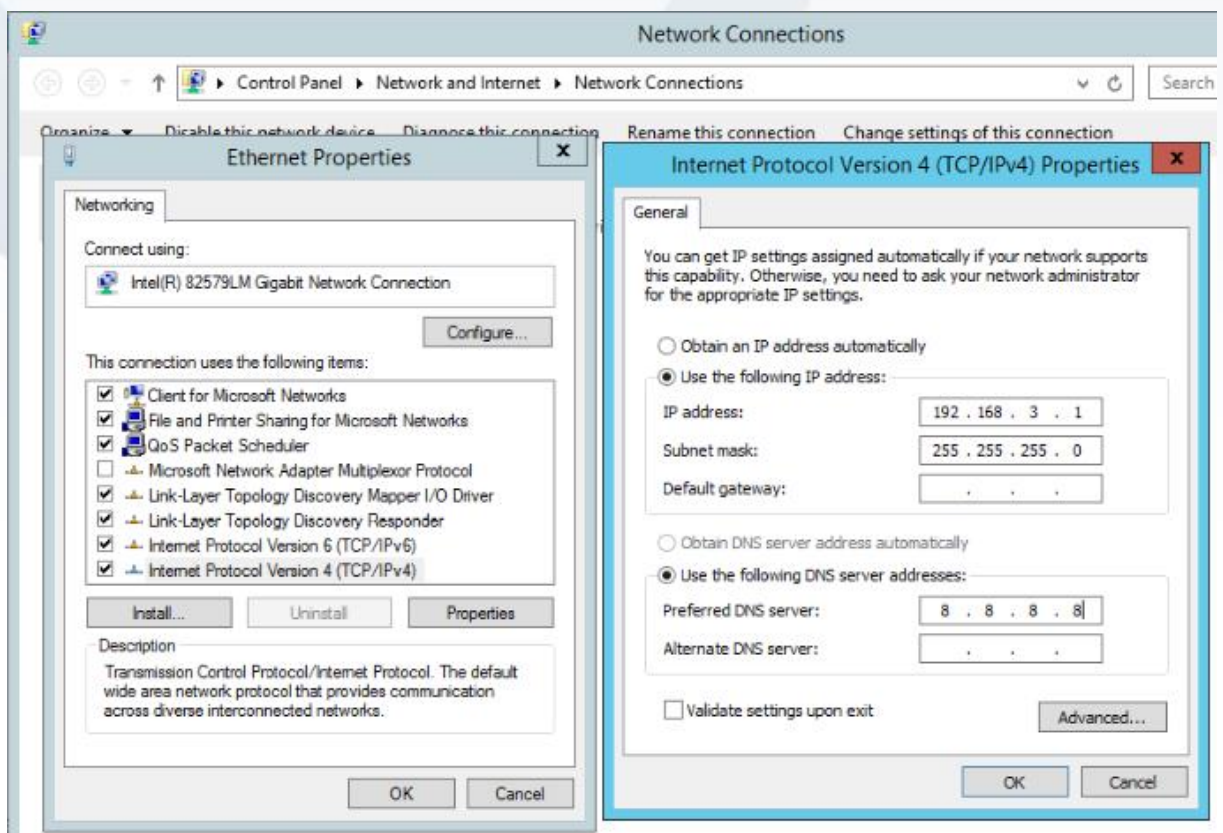
Make sure your machine has a static IP address which you would like to use for your FTP network. In this example we are using **192.168.3.1**.

You can set the static IP via Control Panel > Network and Internet > Network Connections > Right click the card/port you want to give a static IP and select Properties > Select Internet Protocol Version 4 (TCP/IPv4) > click on Properties.

In the new window you can check the option: Use the following IP addresses

Now you can add the IP address you want to use.

Check via the command prompt if the IP has been changed, if not please reboot and check again.



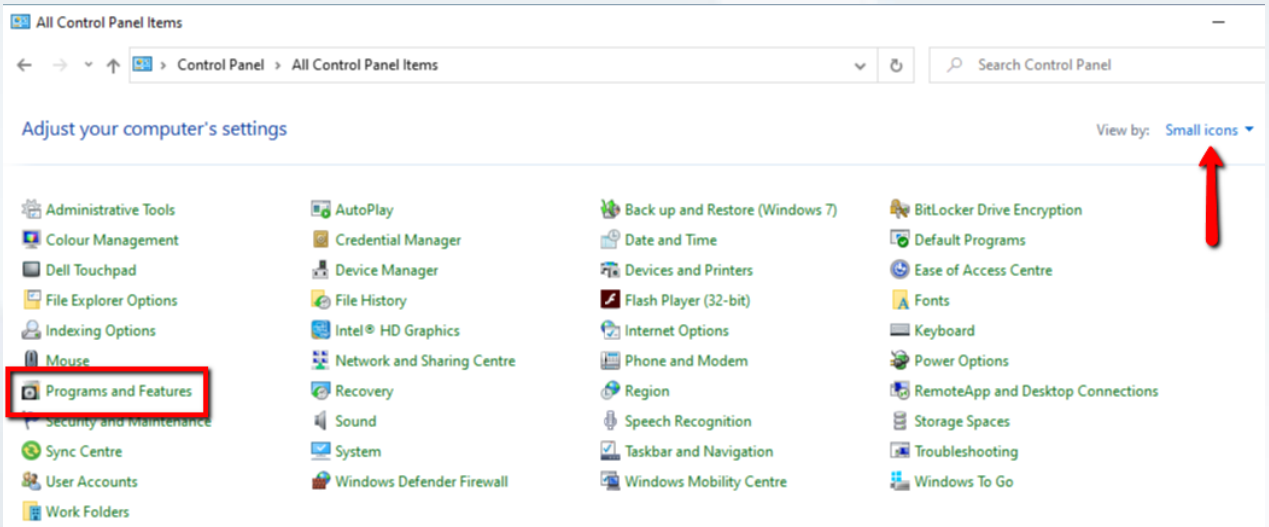
Step 2: Create an FTP Folder

In this manual the folder is called WipeReports and will be placed on the desktop. The folder can have any name and can be placed on any location.

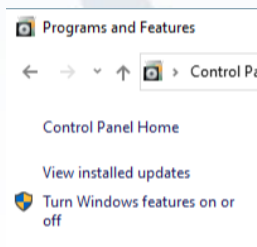
Navigate to the location and create a new folder.

Step 3: Turn on the IIS server

Go to the control panel and select 'small icons' from the right upper corner and then select 'Program and Features' in the list.



On the new page we select 'turn Windows features on or off'



In the pop-up 'Windows Features' you can unfold 'Internet Information Services' (IIS).

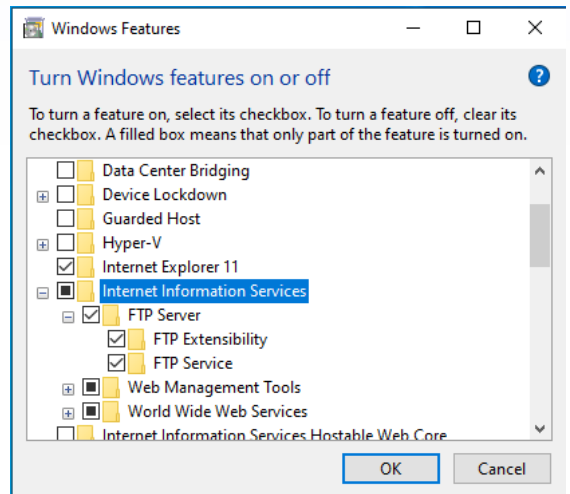
There we can check the boxes of:

>> Internet Information Services

>> FTP Service

>> FTP Extensibility

Please use this order to have it look like this:

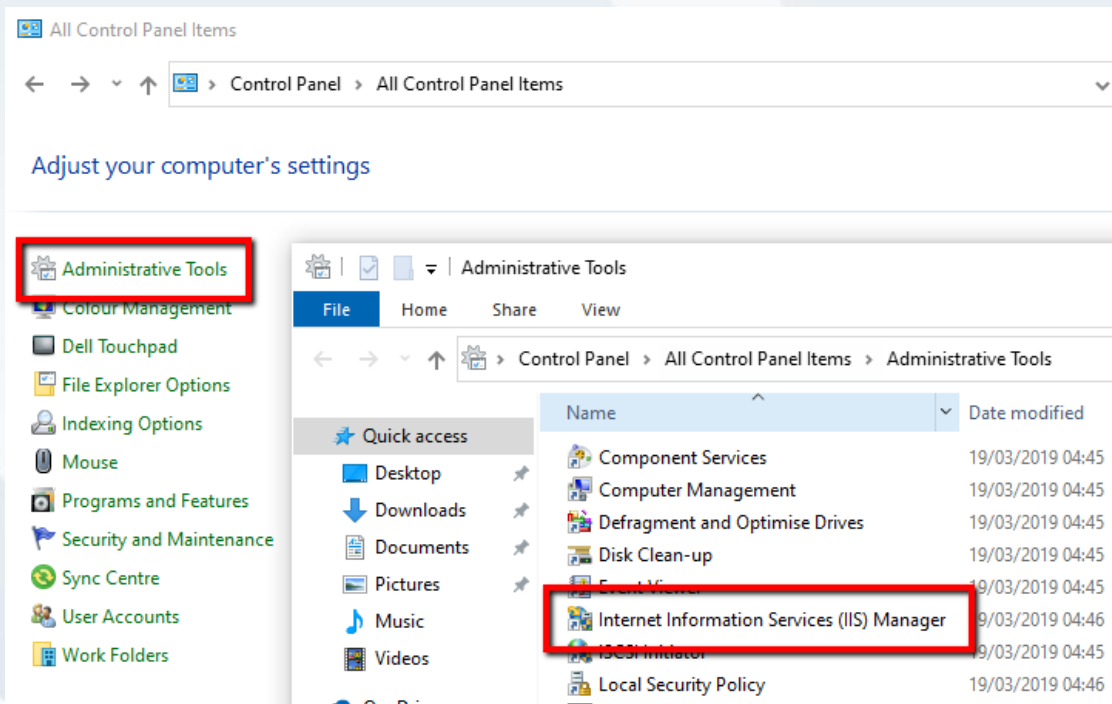


Click on OK if the boxes are checked.

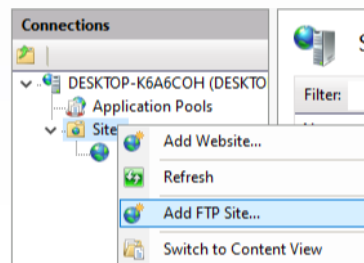
The newly selected features will be installed now. This might take a few minutes.

Step 4: Create FTP site

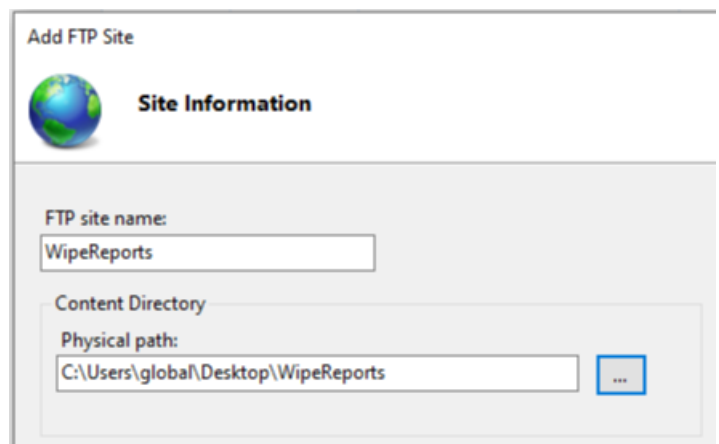
Open the control panel and click on 'Administrative Tools' and select 'Internet Information Service (IIS) manager'



In the IIS manager you need to expand the server tree and Right-click on 'site' to add a new FTP server



Here we can give the FTP site a name and select the folder we created in step 2. Click Next if filled in.



Here you can select under IP Address 'All Unassigned' (*). Keep SSL on NO SSL unless you have an SSL in use.

Make sure the Start FTP site automatically box checked.

Click next when done.

The screenshot shows the 'Add FTP Site' dialog box with the 'Binding and SSL Settings' tab selected. The 'IP Address' dropdown is set to 'All Unassigned' and the 'Port' is '21'. The 'Start FTP site automatically' checkbox is checked. Under the 'SSL' section, 'No SSL' is selected.

(* Bindings are basically what IP addresses you want the FTP site to use. You can leave it at All Unassigned if you don't plan on running any other website.)

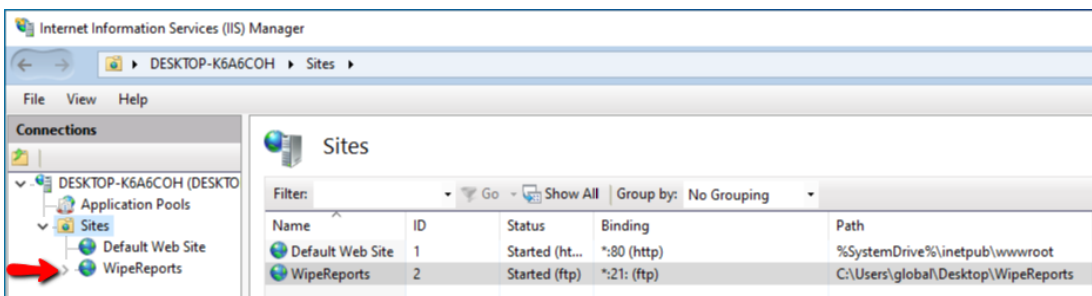
In this window Set the authentication to basic and allow access to all users.

Make sure the permission is set to read and write. If not set properly, it will not work

Click Finish when done.

The screenshot shows the 'Add FTP Site' dialog box with the 'Authentication and Authorization Information' tab selected. Under 'Authentication', 'Basic' is checked. Under 'Authorization', 'All users' is selected in the 'Allow access to:' dropdown. In the 'Permissions' section, 'Read' and 'Write' are both checked.

The FTP server should be set now, make sure it is shown in the server tree as shown here below. If not, reboot Windows.



www.global-emea.com
whitecanyon@global-emea.com
+44 (0) 345 340 3105



Step 5: Allow connection in the Firewall

Open the control panel and select Windows Firewall or Windows Defender Firewall.

There are 2 options. If your network is behind a Firewall you can turn it off via the option Turn Windows Defender Firewall on or off / Turn Windows Firewall on or off

If your network is not behind any Firewall it's recommended to not turn it off but allow port 21 open for FTP communication.

In that case select Allow an app or feature through Windows Defender Firewall / Windows Firewall.



Allow apps to communicate through Windows Defender Firewall

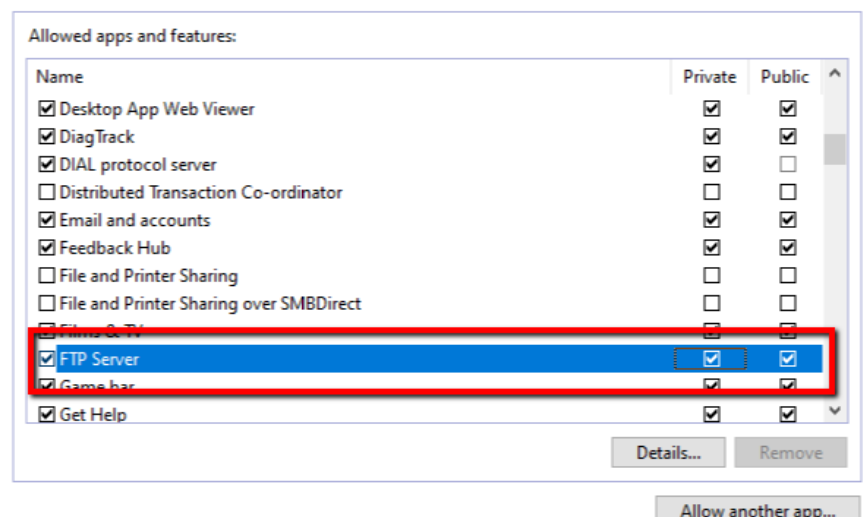
To add, change or remove allowed apps and ports, click Change settings.

What are the risks of allowing an app to communicate?

Change settings

First click on the option Change settings in the Right upper corner.

Then select the FTP feature from the list and make sure Private and Public are checked



The FTP server is set up now.

Step 6: Make connection from WipeDrive

There are 2 options to set the connection, one is via the GUI the second one is in the config file; wd-options.cfg:

If you want to use the config file, please see below part:

```
ftp-server=192.168.3.1
ftp-user=global
ftp-password=test
ftp-directory=/
```

Below 2 options can be activated if needed

```
# If the FTP server requires SSL for secure service. Only supports explicit
SSL.
```

```
#ftp-use-ssl=true
```

```
# An advanced option that can be useful in environments that have an
unreliable
```

```
# internet connection. This option will save a copy of the log files to /tmp.
```

```
#ftp-leave-files=true
```

For the GUI, which normally would be the PXE server, you can find the settings under: Change settings > Log types and Destinations > Check the box 'Save log files to' > check the box 'FTP' > fill in all needed credentials as shown in this example.

The User and Password are the login details of the Windows machine.

Log Destination

Save log files to:

- FTP
- Removable on Client
- Removable on Server

Host:

Username:

Password:

Path:

Use SSL:

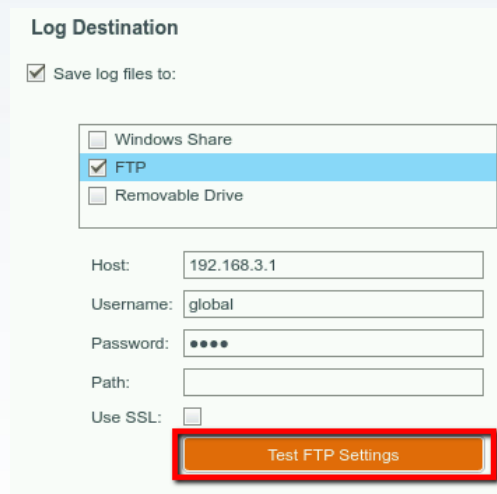
www.global-emea.com
whitecanyon@global-emea.com
+44 (0) 345 340 3105



Test the connection:

Once you booted a client you can test the connectoin from the settings. It will copy a tekst document to the FTP folder to see if it can connect and if it can write files to it.

Go to options > Log types and Destinations > Test FTP Connection.



Log Destination

Save log files to:

- Windows Share
- FTP
- Removable Drive

Host: 192.168.3.1

Username: global

Password: ●●●●

Path:

Use SSL:

Test FTP Settings

IMPORTANT NOTES

We will ensure your update of our software runs as smoothly as possible. To this end we have a dedicated support team for all your technical queries. They can be contacted through any of the following channels. If something is not clear or you have a question about this, please contact us at support@global-emea.com or reach out directly to your dedicated account manager.

Support can be reached on any of these during standard office hours Mon-Fri; 9AM-5:30PM GMT

www.global-emea.com
whitecanyon@global-emea.com
+44 (0) 345 340 3105

