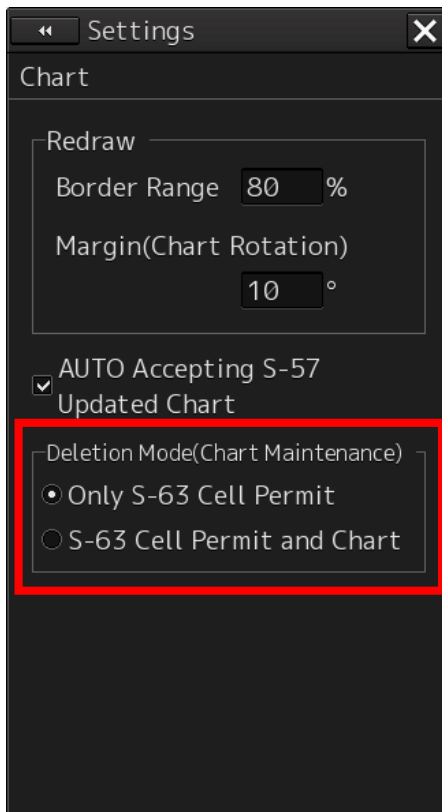


If deleted ENC chart on Check StatusWindow, select either

- Delete the license only, or
- Delete the license and the chart.

- 1) Start ECDIS screen or RADAR screen (chart display option) from Task Menu.
- 2) Select [Menu] – [Settings] – [Chart].  
Display the setting dialog about chart operation.
- 3) Select the Deletion Mode on Deletion Mode (Chart Maintenance).



Deletion Mode (Chart Maintenance):

Set the Deletion Mode on Check Status Window.

- Only S-63 Cell Permit  
Delete the license only.

•S-63 Cell Permit and Chart

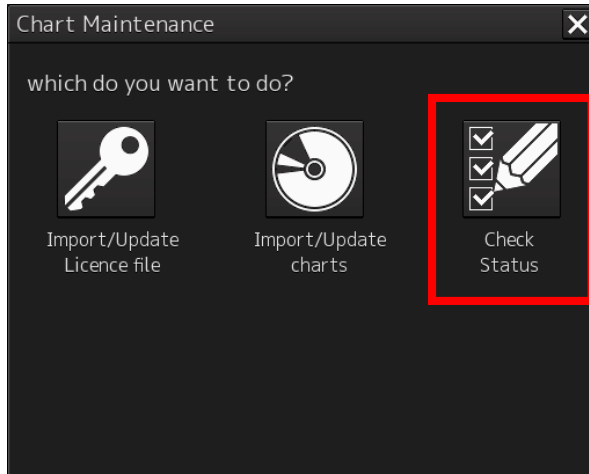
Delete the license and the chart.



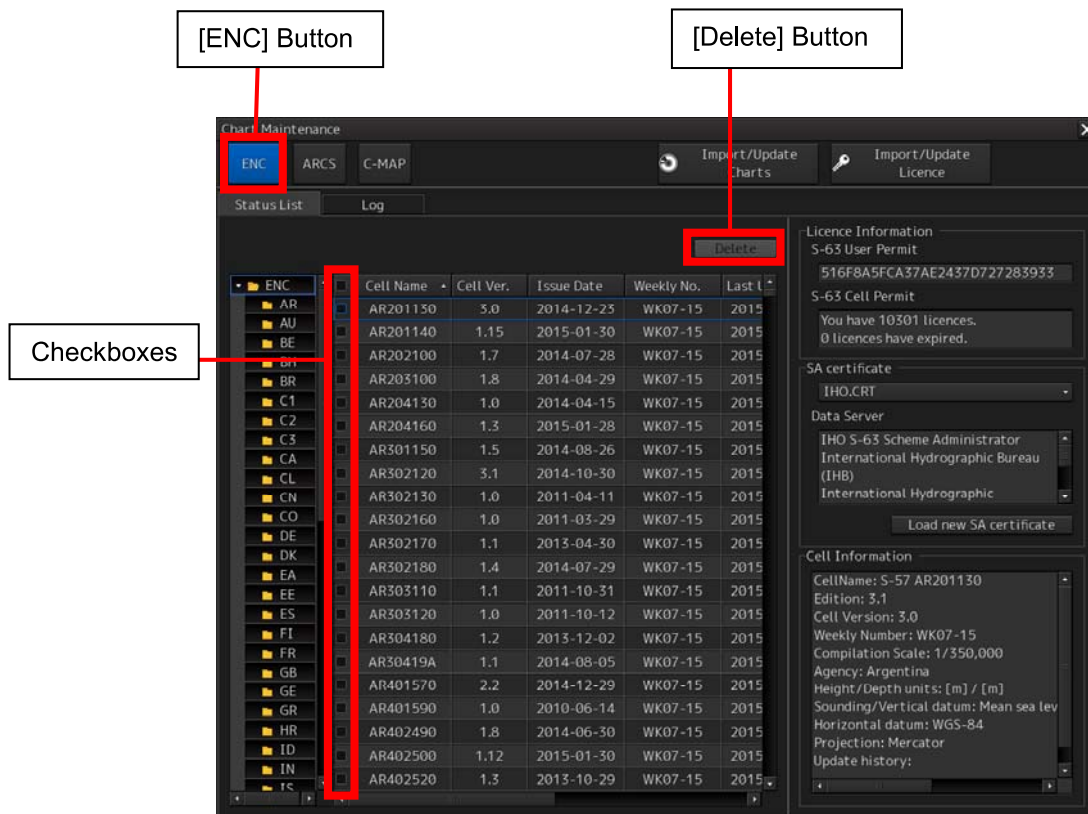
The setting of Deletion Mode (Chart Maintenance) is valid only under S-63 (ENC that requires the permit). Under S-57 (ENC that does not require the permit), the chart is also deleted regardless of this setting.

## 2.7 Deleting ENC Charts

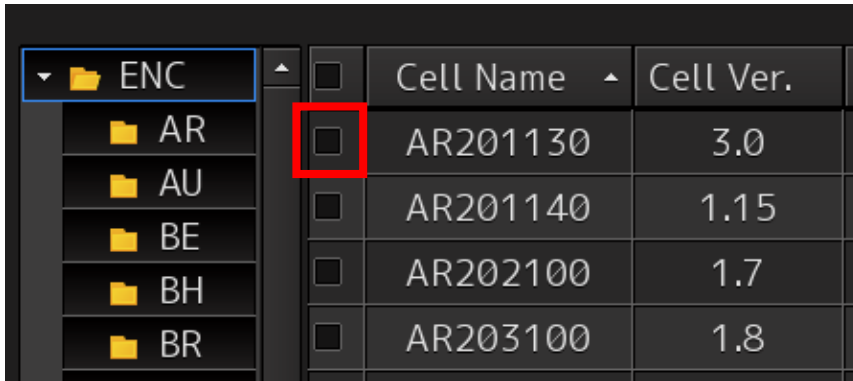
- 1) Start Chart Maintenance from Task Menu.
- 2) Click the [Check Status] button in the Home window.



- 3) Click the [ENC] button in the Check Status window.



- 4) Check the checkboxes of charts that need to be deleted in the Chart List window.



	Cell Name	Cell Ver.
<input checked="" type="checkbox"/>	AR201130	3.0
<input type="checkbox"/>	AR201140	1.15
<input type="checkbox"/>	AR202100	1.7
<input type="checkbox"/>	AR203100	1.8

- 5) Click the [Delete] button in the Chart List window.



- 6) The Delete dialog box appears. Clicking the [OK] button will delete the checked charts in the Chart List.

