



Broadcast Electronics Inc.

4100 North 24th Street, Quincy, Illinois 62305 USA • Phone (217) 224-9600 • Fax (217) 224-9607 • www.bdcast.com • bdcast@bdcast.com



Pinging the FXi 60/250 Exciter (w/Exgine) from the XPi 10 Exporter Application Guide

597-0542-007 Revision A
1/18/07

Pinging the FXi 60/250 Exciter (w/Exgine) from the XPi 10 Exporter Application Guide

©2007 Broadcast Electronics Inc. All rights reserved.

The information in this publication is subject to improvement and change without notice. Although every effort is made to ensure the accuracy of the information in this manual, Broadcast Electronics Inc. accepts no responsibility for any errors or omissions. Broadcast Electronics Inc. reserves the right to modify and improve the design and specifications of the equipment in this manual without notice. Any modifications shall not adversely affect performance of the equipment so modified.

Proprietary Notice

This document contains proprietary data of Broadcast Electronics Inc. No part of this publication may be reproduced, transmitted, transcribed, stored in a retrieval system, translated into any other language in any form or by any means, electronic or mechanical, including photocopying or recording, for any purpose, without the express written permission of Broadcast Electronics Inc.

Trademarks

Broadcast Electronics and the BE logo are registered trademarks of Broadcast Electronics Inc.

All other trademarks are property of their respective owners.

1. Pinging the FXi 60/250 Exciter (w/Engine) from the XPi 10 Exporter

The XPi 10 Exporter has the ability to be “ping” the FXi Exciter. This command may be used to ensure that the XPi and FXi are able to talk to each other over the I.P. network. The following is a short procedure on how you ping the FXi exciter from the XPi 10 Exporter.

Note: An external keyboard and mouse must both be connected to the labeled ports on the XPi 10.

Step 1 - Select the **SYSTEM** button on the front panel of the XPi 10.

Step 2 – Next, select **COMMAND**.

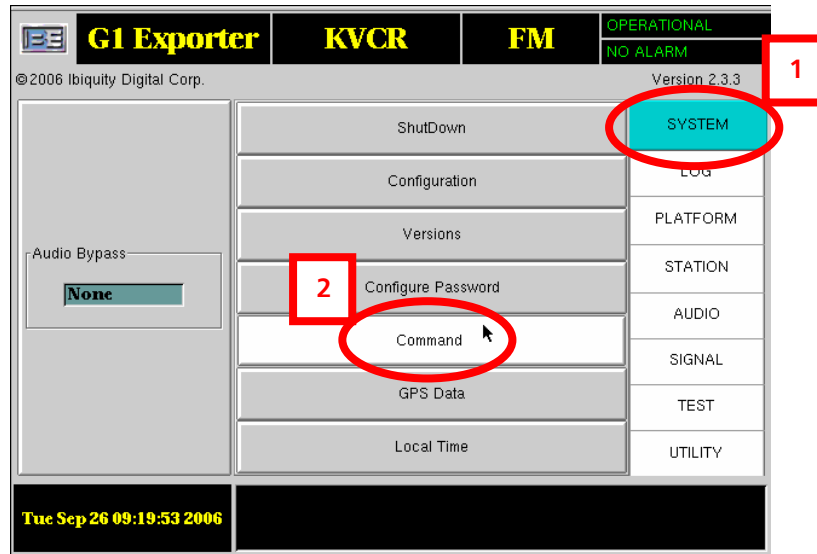


Figure 1 – Main XPi GUI

Step 3 - Uncheck the “Display virtual keyboard” box.



Figure 2 – XPi System Command Menu



Step 4 - Select the "xterm" button.



Figure 3 – XPi System Command Menu

Step 5 – On the external keyboard, type "ping 10.2.4.9", where **10.2.4.9** **MUST** be the IP address of the Engine Card in the FXi Exciter. The Engine card should start to reply as shown.

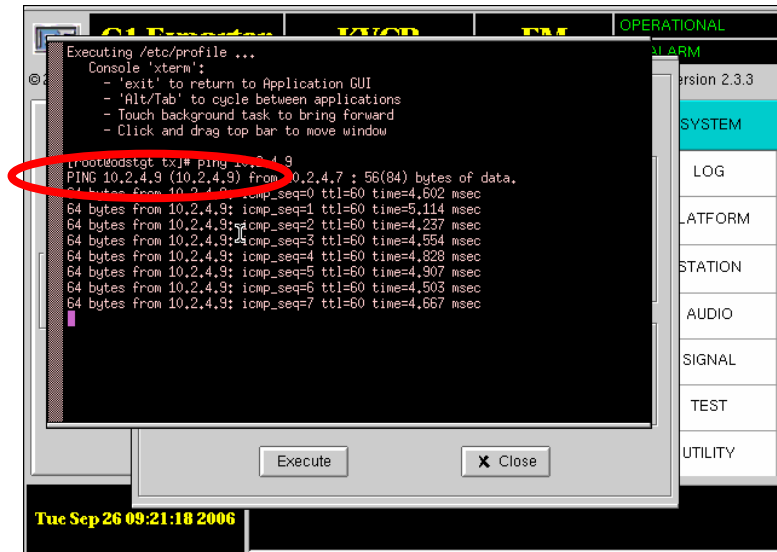


Figure 4 – XPi xterm



Step 6 - To exit type "Ctrl c".

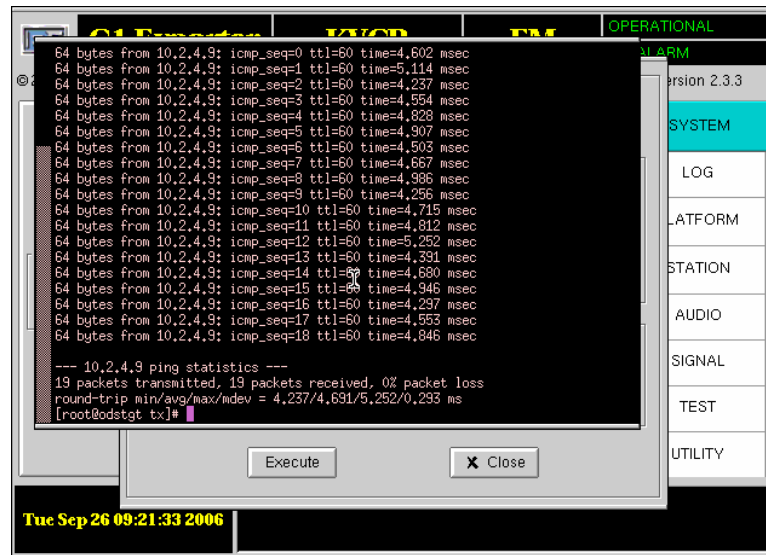


Figure 5 – XPi xterm

Step 7 – Next, type "exit".

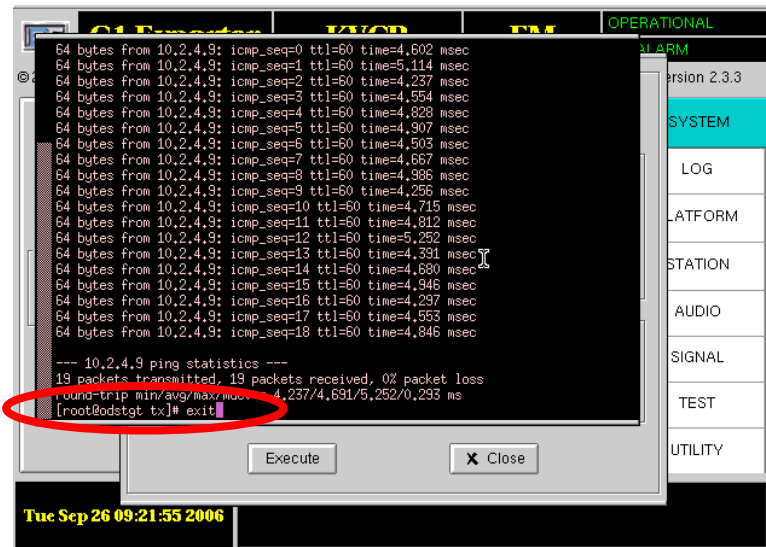


Figure 6 – XPi xterm

