

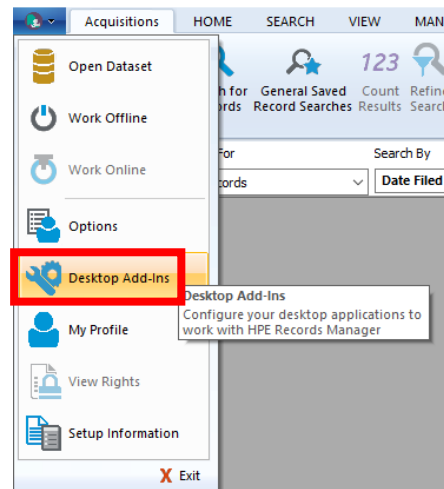
Disabling Office Integration

Why Disable Office Integration?

Sometimes the Office integration can cause errors when opening Outlook, Word documents, or Excel spreadsheets. To remove the errors, Office integration can be disabled within Content Manager.

How to Disable Office Integration

Within Content Manager, click on the **Settings** button and choose **Desktop Add-Ins**.



Ensure all boxes are unchecked.

Click **OK**.

