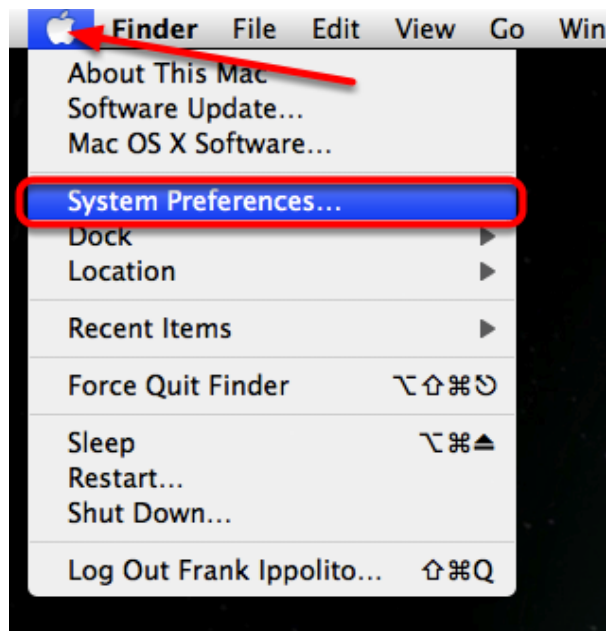


How to add a printer on a Mac-IP Address

Follow these instructions to add a printer on your Macintosh computer. Some images shown here may differ slightly than what appears on your own computer depending on the version of your operating system.

Step 1

Click on the **Apple** () Menu and select **System Preferences...**



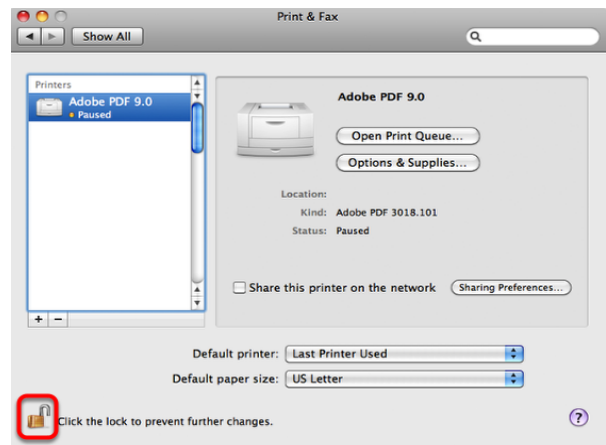
Step 2

Select the **Print & Fax** icon.



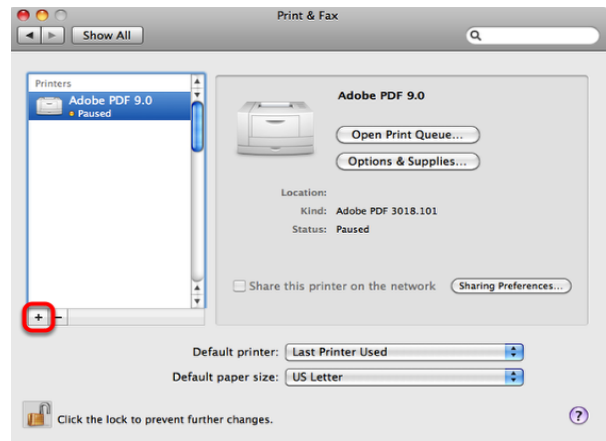
Step 3

Click on the lock icon (see image at right) and enter your password, if prompted.



Step 4

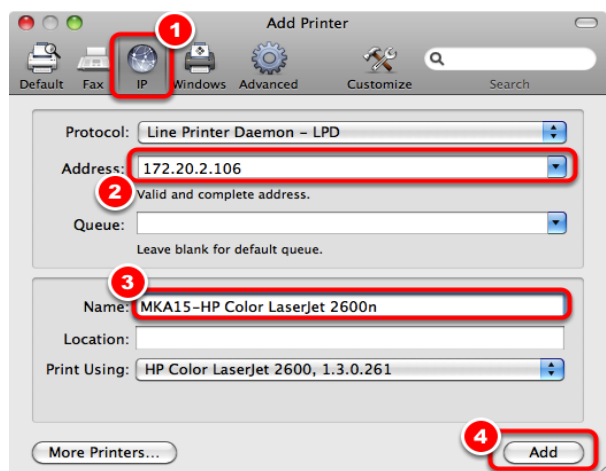
Click the "+" symbol to add a new printer.



Step 5

Click the **IP** button, then enter the IP address of your printer into the **Address:** field. Enter the name of your printer in the **Name:** field, as shown, then click the **Add** button.

*NOTE: The **Print Using:** field should automatically select the correct print driver for your printer.*



Step 6

If your printer has any optional accessories, please select them here, then click **Continue**.

