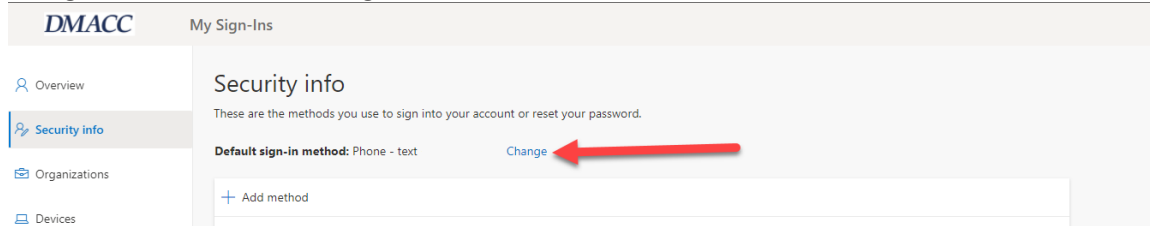
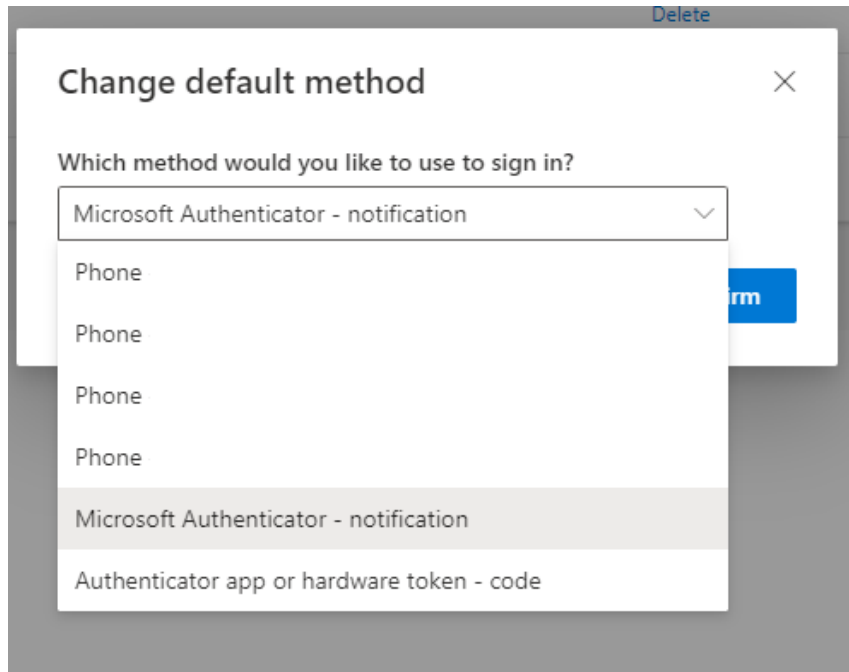


Setup Microsoft MFA – Change Default Sign-in Method

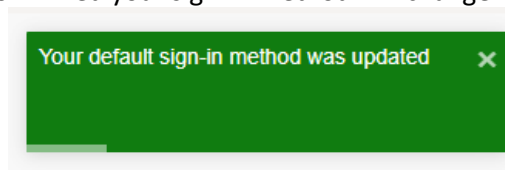
1. Navigate here: <https://aka.ms/MFASetup>
2. Login if needed, Authenticate with Text message or phone call if needed.
3. Select “Change” located at “Default sign-in method:”



- a. From the pop-up window select the drop-down menu. From there select your preferred sign-in method. Then select “Confirm”



- a. Once confirmed your sign-in method will change. You will see a confirmation at the top right.



a.