

S One Firmware Upgrade Procedure

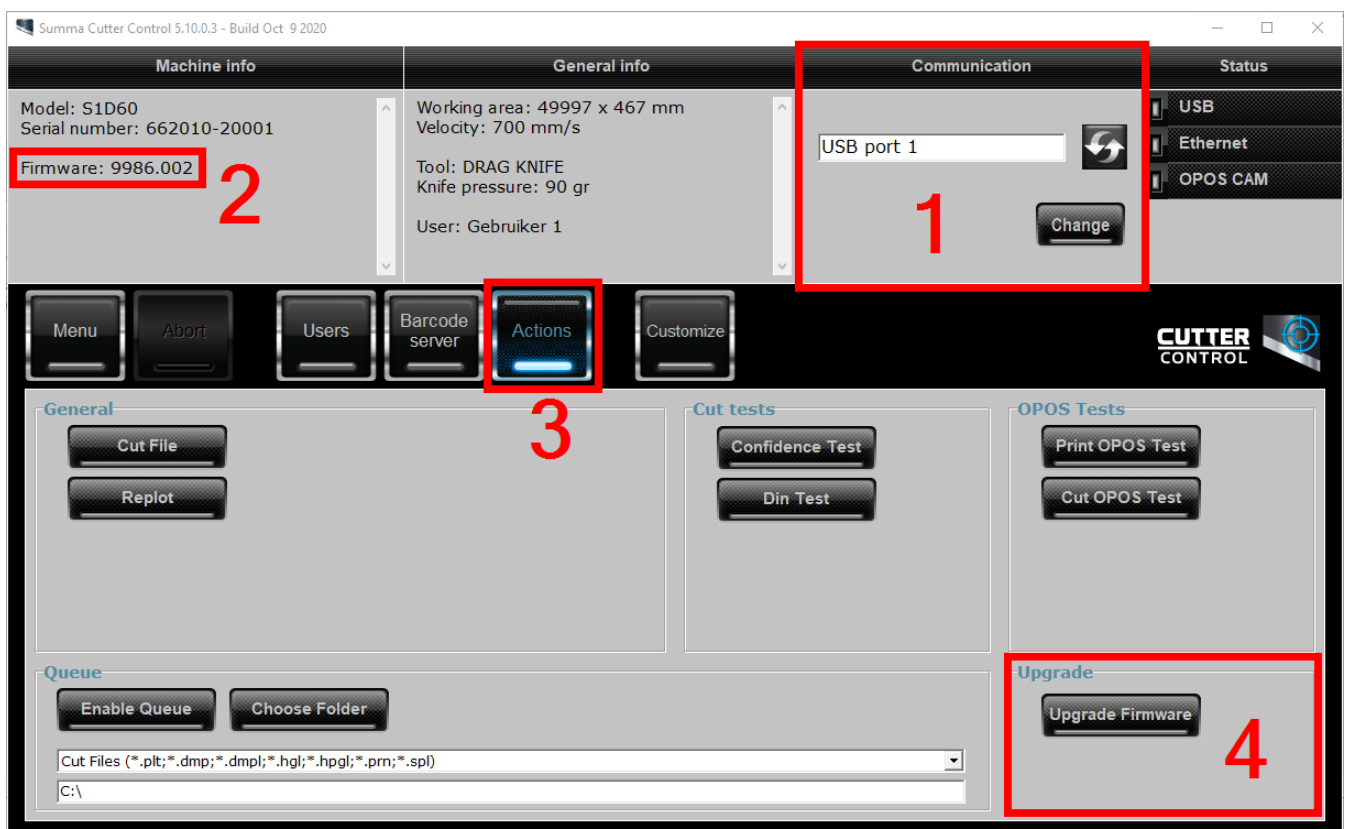
This procedure describes how to upgrade the firmware on a Summa S One series roll cutter.

An active internet connection is advised on the computer used to perform the firmware upgrade.

Check Current Firmware Version

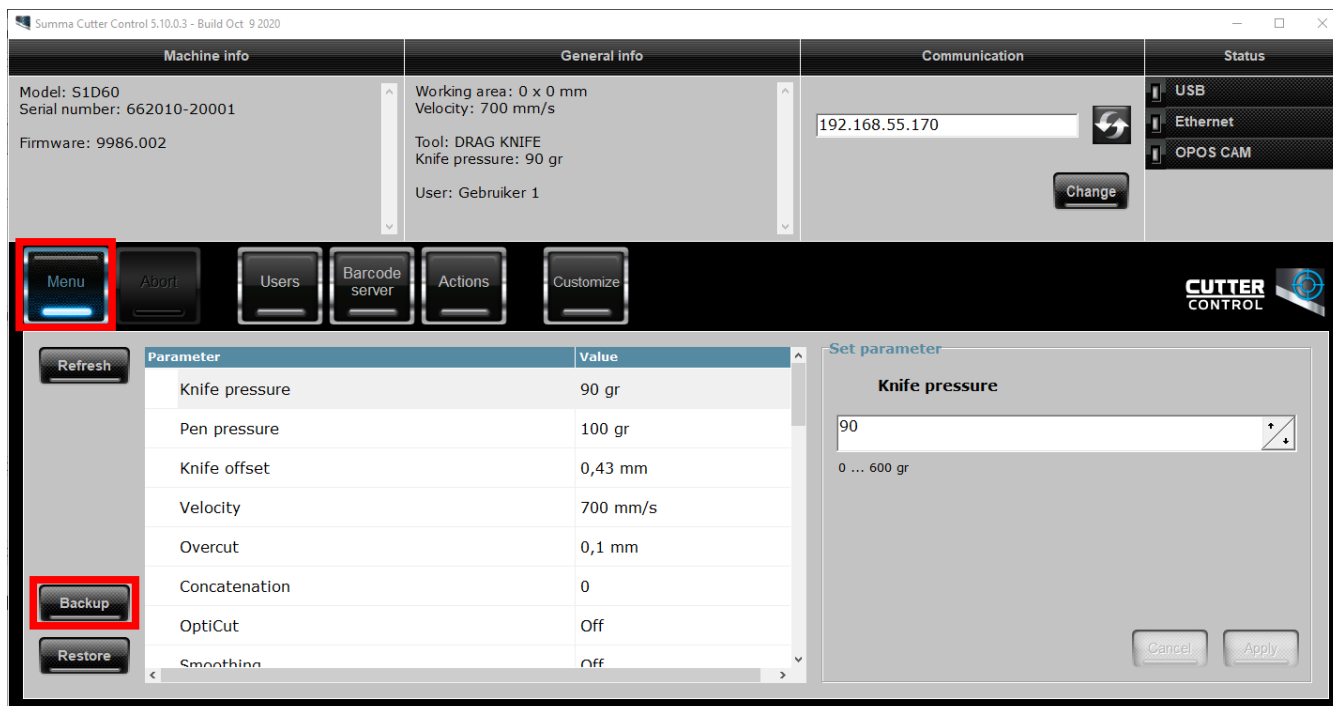
You can check the current firmware version with *Summa Cutter Control*:

- Connect the cutter to the computer with the USB or network interface.
- Switch the cutter on.
- Adjust the communication parameters to match the connection used (1).
- The current firmware version is displayed in the *Machine Info* pane (2).



Backup

It is a good option to create a backup of the machine, as this backup contains all parameters of the cutter (except for the network and USB configuration). This backup may come in handy in the future when there is a configuration or hardware issue.

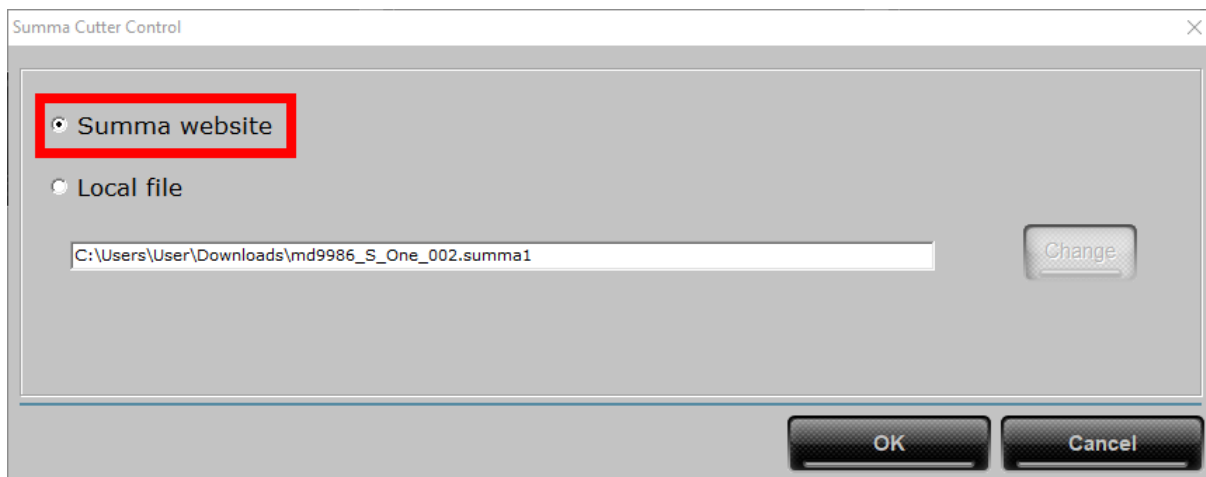


Upgrade Firmware

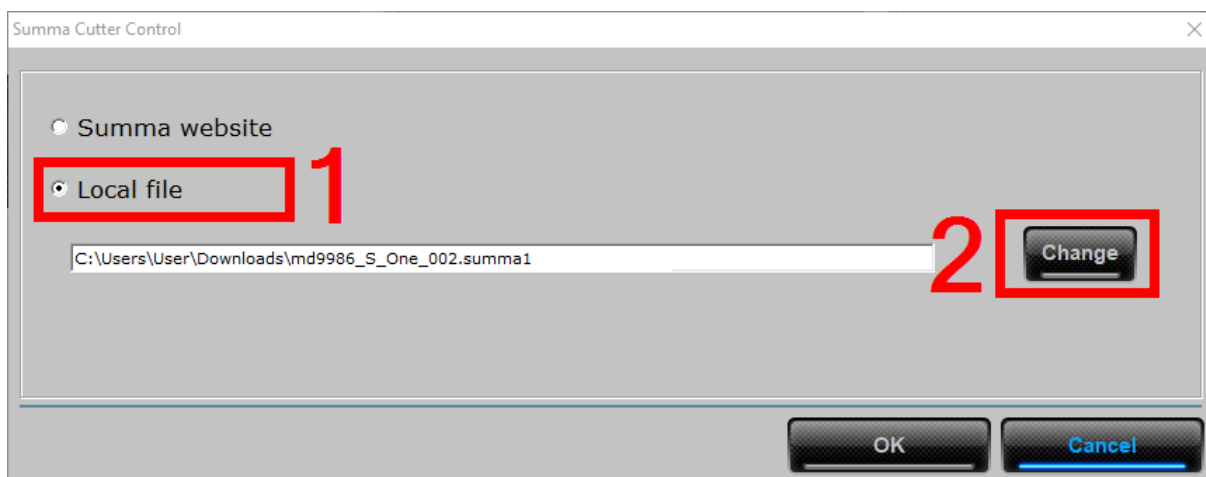
Before upgrading the firmware, a reboot of the cutter is required.

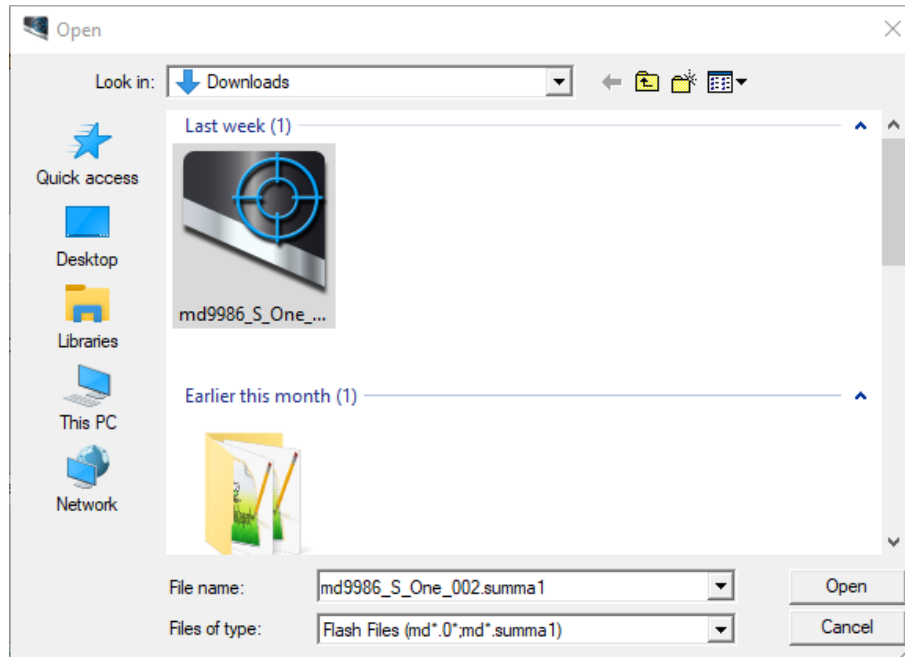
Click on *Actions* (3) and *Update Firmware* (4). You are presented the option to upgrade the firmware directly from the internet (requires internet access from the computer used to upgrade the firmware), or to use a local stored firmware file.

It is advised to use the option to upgrade the firmware from the Summa website.



In case you opted to use a local file, navigate to the folder where you downloaded the latest firmware and select the new firmware:

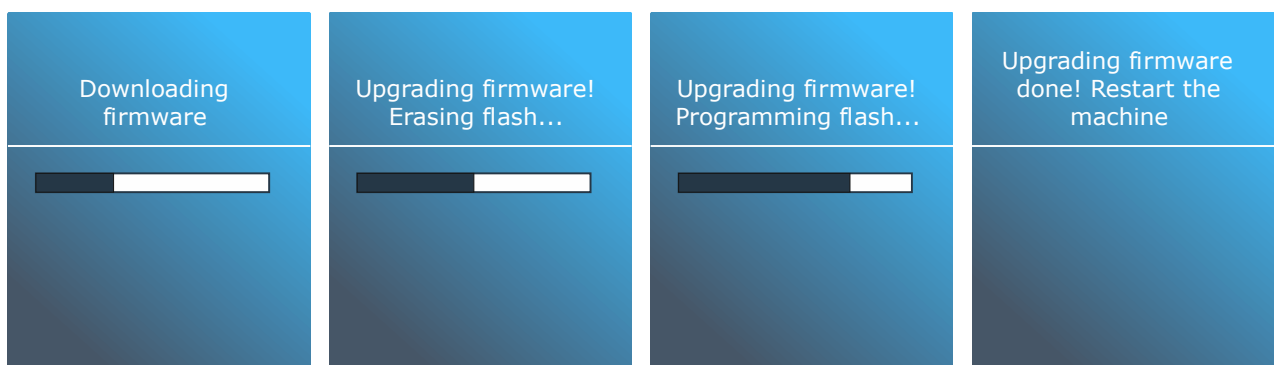




Click the [OK] button to start the firmware upgrade procedure.



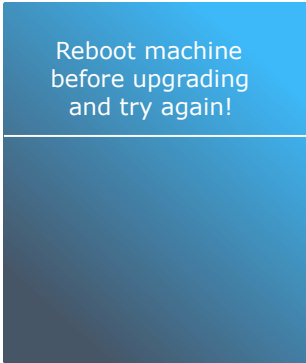
You can follow the firmware update progress on the display of the cutter:



Reboot the machine to finalize the firmware upgrade when the display instructs to do so.

Error messages

In case a job was still in the buffer of the cutter, then the upgrade may fail. An error message will then be displayed:



Reboot machine
before upgrading
and try again!

In case the file was corrupted, incomplete, or interrupted, an error message will be displayed:



Corrupted file or
communication
problem! Reboot...

In case an incorrect firmware file was sent to the cutter, then an error message is displayed:



Upgrade file does not
match the machine
type! Reboot...

In all above cases, you will need to restart the cutter and start over again.



WARNING: INTERRUPTION OF THE FIRMWARE UPDATE PROCEDURE WILL LIKELY RENDER YOUR MACHINE UNUSABLE.