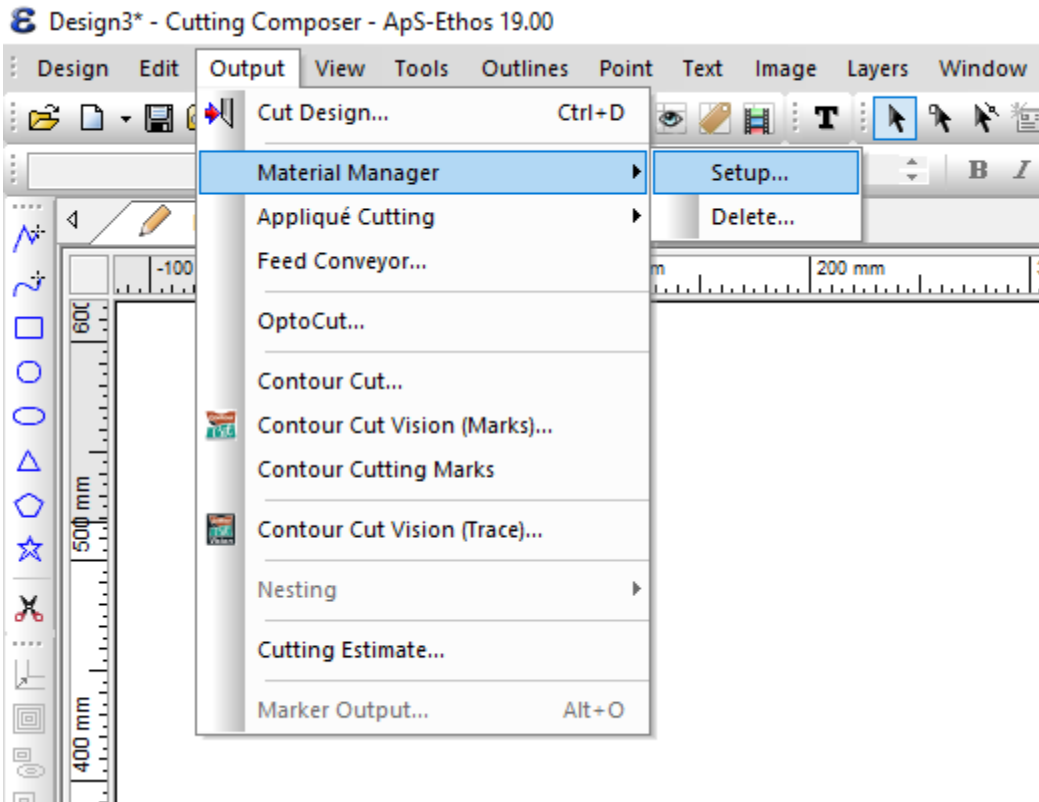
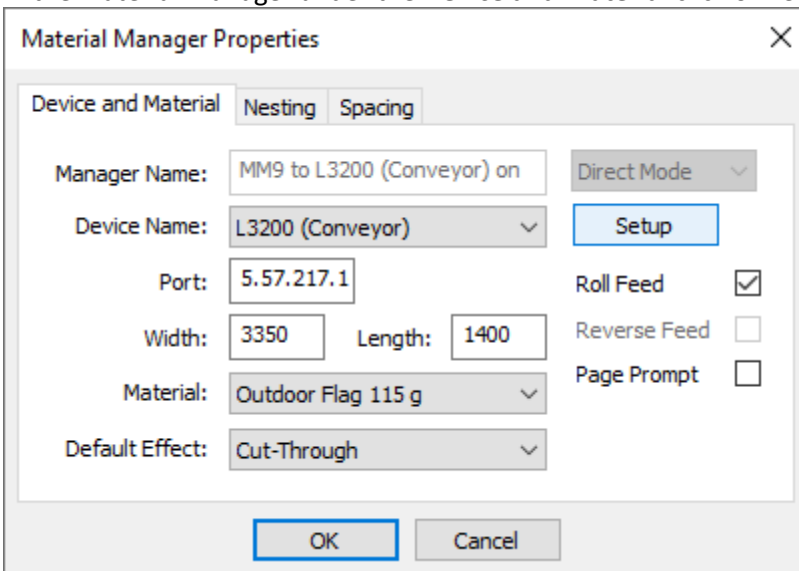


Adjusting Laser Settings (Speed/velocity, Power,etc)

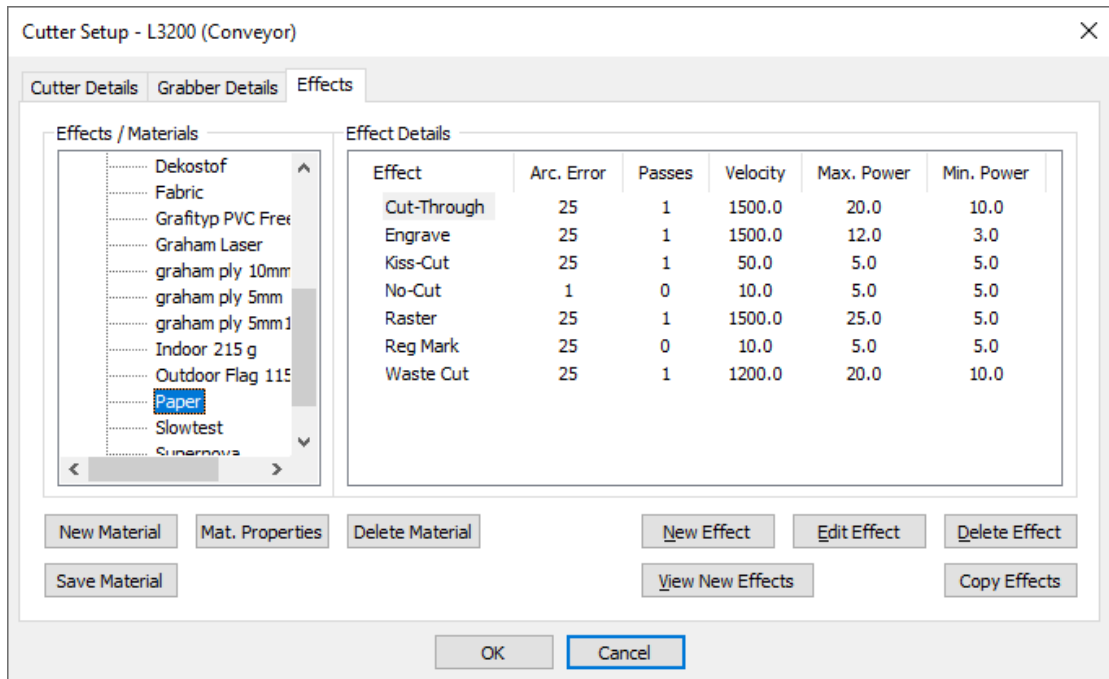
1. In Ethosm make sure one job is open.
2. Select in the **Menu - Material Manager - Setup**



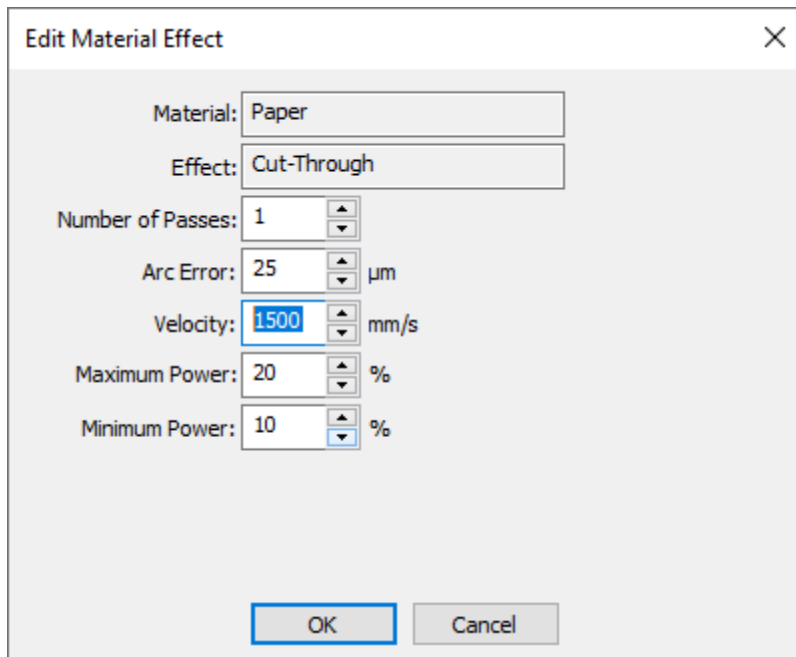
3. In the material Manager under the **Device and Material** click on "Setup" Button



- In the Cutter Setup under the **Effect** tab, select the material.



- Select the effect (Typically: Cut-Through) and click on the "Edit Effect" button. Alternatively, double click on the effect.
- Adjust the speed/velocity or power in the Material Effect.




- Click the "OK" button to close the Material Effect
- Click the "OK" button to close the Cutter Setup

9. Click the "OK" button to close the Material Manager

Alternative change before outputting:

In "Direct Mode"

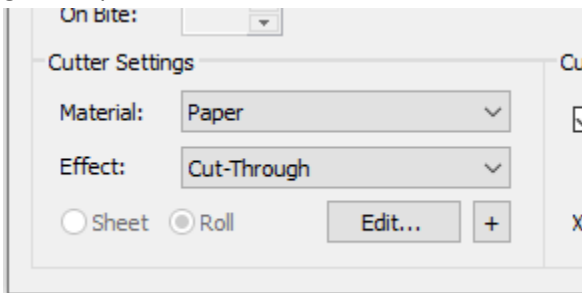
- Menu: Output - Cut Design
- Ctrl + D
-  toolbar icon

First job you sent to the machine the "Material Manager" will pop-up to be setup : see 3) in the general procedure.

Note: If a job has been output, the material manager will be already and the "Material manager will not pop-up on the next jobs. The Material Manager can be deleted to force new setup:Select in the **Menu - Material Manager - Delete** before outputting.

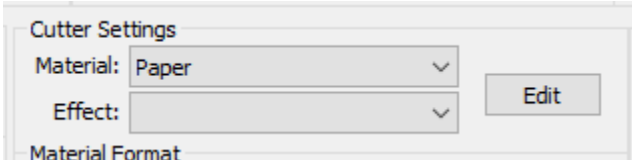
In "Vision Mode" Trace/Marks:

- In the Vision Window, click on the '+' button to get to the Cutter Setup Window : see 4) in the general procedure



In "OptoCut Mode" (not on L3214)

- In the OptoCut Window, make sure one material is selected and click on the 'edit' button to get to the Cutter Setup Window : see 4) in the general procedure



General Remarks:

- Changing effect details are always stored immediately in the material database. It is not possible to change settings just for one job.
- Therefore, when testing a new material always use a new material in the database in order not to overwrite material settings. In the Cutter setup window select a material and click on the 'new material' button to make a copy of the selected material.