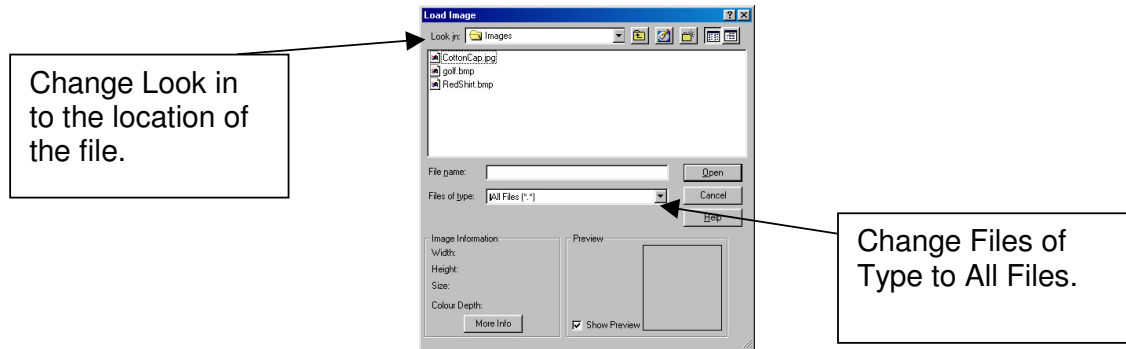



Creating a cut design from an image

1. Click onto the New Design Button  or go to the **Design** menu – **New**.
2. Double click onto **Laser Effects**.
3. Go to the **Image** Menu – **Insert Image**. The following form will appear:
The 3 types of images you can import are Tiff, JPEG & BMP.



Double click onto the required image. A small crosshair will appear on the screen. Move your mouse to the top left and single click the left mouse button.

4. Go to the **Views** menu – **Zoom Resize**.
5. Go to the **Image** menu – **Freeze Images**.
6. You may need to use the Zoom tool if the image appears small.
7. Select the Draw Line Tool . You are now ready to draw your shape. Here is a list of the drawing tool commands.
 - Left Clicking will enter a line point.
 - Holding Ctrl down and left clicking will enter a curve point.
 - The Tab button closes a shape.
 - The backspace button deletes the last point entered.
 - Entering a point with the 'o' key on your keyboard snaps the next point to a horizontal or vertical line.
8. When you have finished using the Drawing tool click the right mouse button twice.
9. Go to the **Image** menu – **Un-Freeze Images**.
10. Click onto the image and press the Delete key on your keyboard. You are now ready to send the design to the cutter.
11. Place the material in the machine and set the media area.

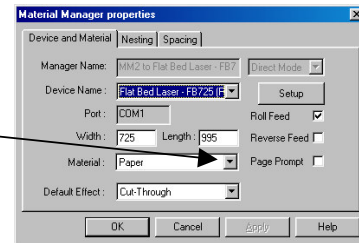
Setting the Media Area


Click the Media button on the machine controller and press enter. Move the cutting head using the arrow keys to the bottom left of the material, press enter. Move the cutting head to the top right of the material and press enter again.

12. Make sure your machine is on-line by clicking the Hand button on the machine keypad.
13. Go to the **Output** menu – **Material Manager** – **Delete** and click the delete button.
14. Go to the **Output** menu – **Material Manager** – **Setup**.

15. You now have one of two options.

If your material already exists you can select it from the drop down list.




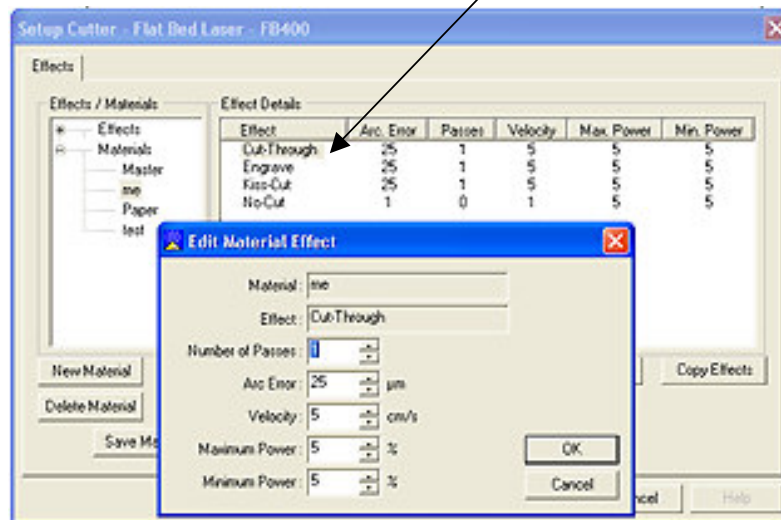
Select the Output Design button . Your machine will now cut the drawn shape.

Or

If you have a new material to set-up click the **Setup** button, then select the **Effects** Tab. And Click the New Material button. Enter the name of your new material. Select the OK button.

16. Make sure your new material is selected and click the OK button on the Material Manager Properties form.

17. Select the Output Design button . To change the power and speed settings for a new material go the Selection **Tab** and **Edit effects**. Double click onto the Effect you wish to change, i.e. Cut -Through and the Edit Material effect form will appear.



18. Change your power and speed settings and click the **OK** button on the first form, then the **OK** button on the last form and click the **Send to Cutter** button.

19. If you would like to save your design to the database go to the **Design** menu – **Save – Save as New design in Database** and **OK**.