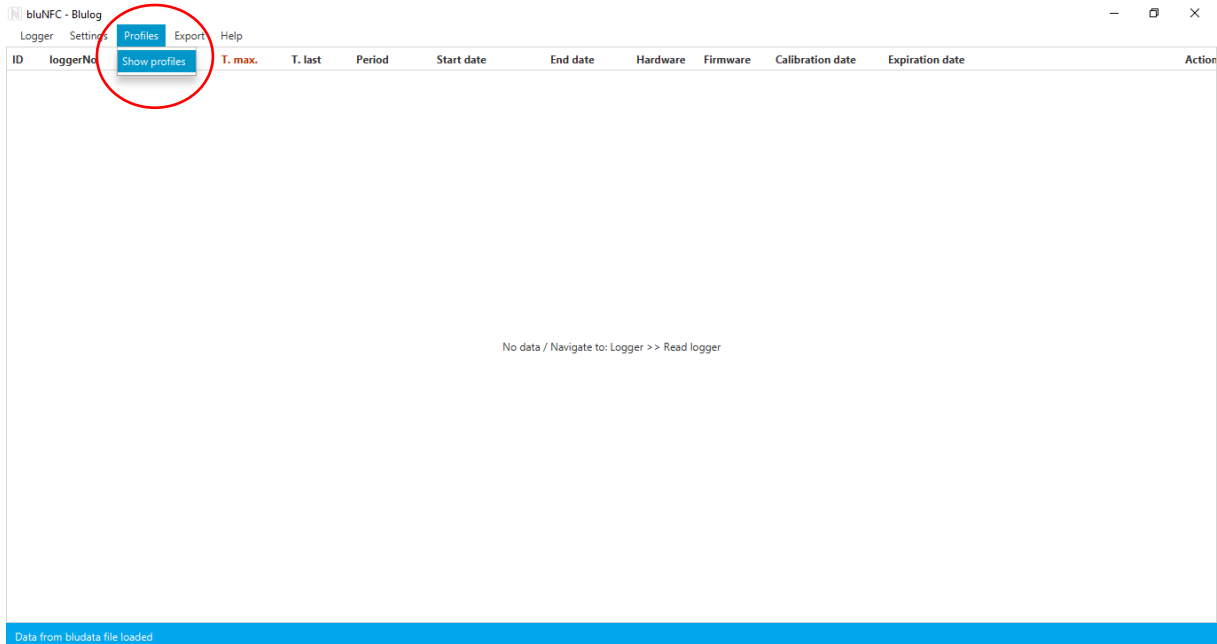
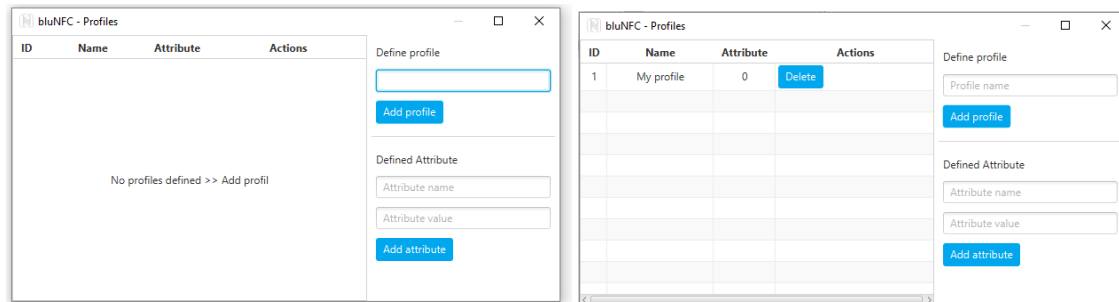


ADDING AND UPLOADING PROFILES IN BluNFC

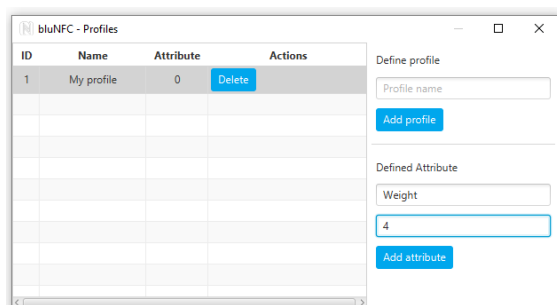
To add new profile, you first need to open the "BluNFC" app. To do it, double click left button on the "BluNFC" icon. Next step is to click on the "Profiles" and then "Show profiles" from the context menu:



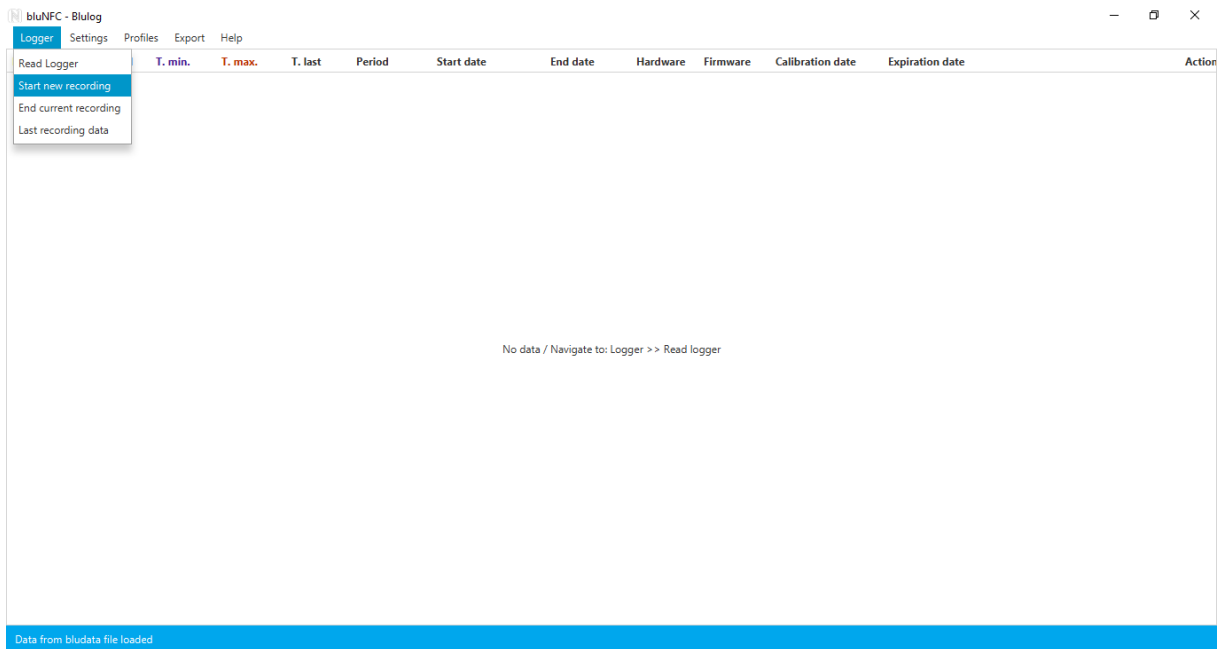
In the new opened window, enter a profile name in the field below the "Define profile" and then click on the "Add profile". Your profile will appear in the checklist on the left side.



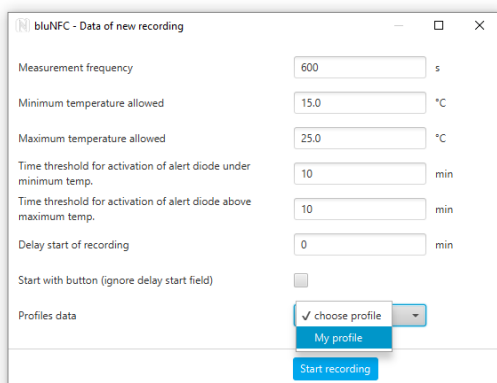
Click on your profile name in the checklist to highlight it. Now you can add attributes to you profile. Enter the attribute name and attribute value in the fields below the "Defined Attribute" and click on the "Add attribute". You can add more than 1 attribute.



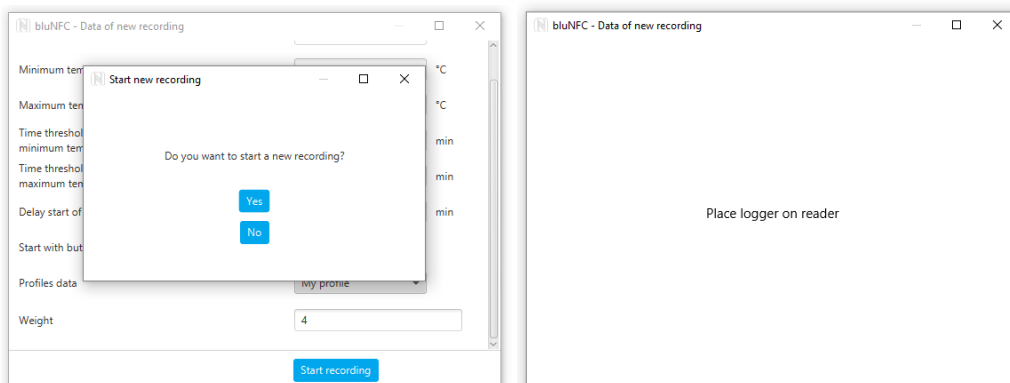
To upload your profile onto the logger, click on the "Logger" and then on "Start new recording".



In the new opened window chose your profile, by clicking on "choose profile" and then on your profile from the context menu. Next click on the "Start recording"



When the system asks you "Do you want to start a new recording?" click on "Yes" and place logger on reader.



System will show you when your logger is ready and you can remove your logger from the reader and close the system or place another logger straight away.