

Camalot

Electronic Assembly Dispensers

ITW EAE

INTRODUCTION

Thank you for purchasing your Camalot Dispenser.

This document contains information to answer all the frequently asked questions in relation to the installation of a Camalot Dispenser

Section 1 – Important Installation Requirements

Section 2 – Machine Foot Print

Section 3 – Training

If you have any further questions please don't hesitate to contact the Camalot Customer Support Group @ 800-737-8110 or ctsc@itweae.com.

Thank you for your cooperation, may I take the opportunity of wishing you many years of quality production with your new Camalot Dispenser.

Sincerely,

Pat O'Brien
Vice President/General Manager

PREINSTALLATION CHECK LIST

Are you ready for Installation?

Item		Confirm
Pallet Jack/Fork Lift (Capable of lifting 3000 lbs (1360.7 kg))		<input type="checkbox"/> Yes <input type="checkbox"/> No
Main Supply Machine configured for 208 - 240VAC, 50/60 Hz, 20A	_____ Voltage	<input type="checkbox"/> Yes <input type="checkbox"/> No
Pneumatic Supply 10 CFM (4.7 l/s) @ >80 PSI (5.5 bar) filtered @ 5 microns	_____ Bar/PSI	<input type="checkbox"/> Yes <input type="checkbox"/> No
Pump		<input type="checkbox"/> Yes <input type="checkbox"/> No
Nozzles/ Needles		<input type="checkbox"/> Yes <input type="checkbox"/> No
Cartridges		<input type="checkbox"/> Yes <input type="checkbox"/> No
Registered on Speedlineonline.com		<input type="checkbox"/> Yes <input type="checkbox"/> No

* For any questions or concerns on the above Installation Check List contract Camalot's Customer Support Group @ 800-737-8110 or ctsc@itweae.com

Important Installation Requirements

It is critical both your facility and your employees are ready for the ITW EAE field service engineer's visit to install your new machine. Please review the list below and let us know if you have any questions. Failure in preparation may incur delays in the installation.

Utility and Environmental Requirements

Electrical Supply

- Electrical Power 208 - 240VAC, 50/60 Hz, 20A
- Single Phase

The machine is not supplied with an electrical plug. Please ensure one is made available when the machine is scheduled for installation.

Pneumatic Supply available at machines installation position.

- Air Supply 10CFM (4.7 l/s) @ >80 PSI (5.5 bar) filtered @ 5 microns
- 12, 10 or 8 mm - Outer diameter
- Machine is supplied with fitting that will accept 12mm line plus adapters for 10mm and 8 mm.

Other:

Weight:

Crated

2756 - 3660 lbs (1250 - 1660 kg)

Uncrated

2205 - 3086 lbs (1000 - 1400 kg)

Height:

Crated - 80"

Uncrated - **32" Conveyor** 82.7" (2100mm) and **50" Conveyor** 82.7" (2100mm)

Depth:

Crated - 69"

Uncrated - **32" Conveyor** 68.3" (1735mm) and **50" Conveyor** 68.3" (1735mm)

Width:

Crated - 84"

Uncrated - **32" Conveyor** 33.4" (848mm) and **50" Conveyor** 50.7" (1289mm)

Front and Rear Clearance (Minimum)

24" (610 mm)

Ground Clearance

3.2" (80 mm)

Dimensions and Floor Space Requirements

Camalot

Electronic Assembly Dispensers *ITW EAE*

Install the Prodigy in a clean, dust free environment to ensure proper operation. In addition, the installation area should provide a clearance of 2 ft. (0.6 meters) around to provide adequate space for service. Refer to the facility layout drawing for machine dimensions.

Uncrating

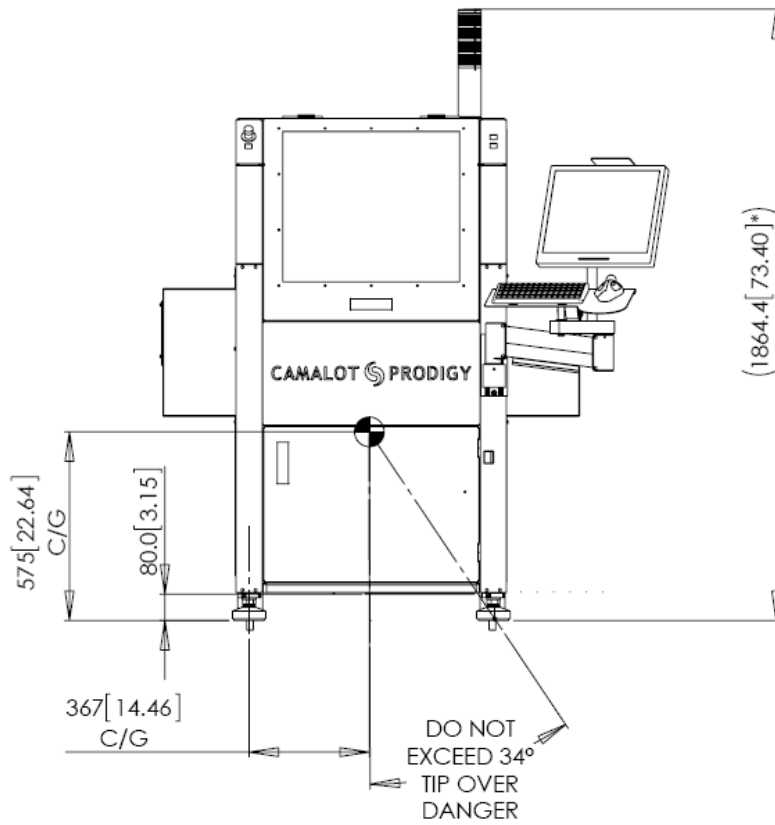
Install forklift blades under the dispenser base. Confirm that the forklift blades do not pinch any pneumatic or electrical lines and that they fully extend across the dispenser base.



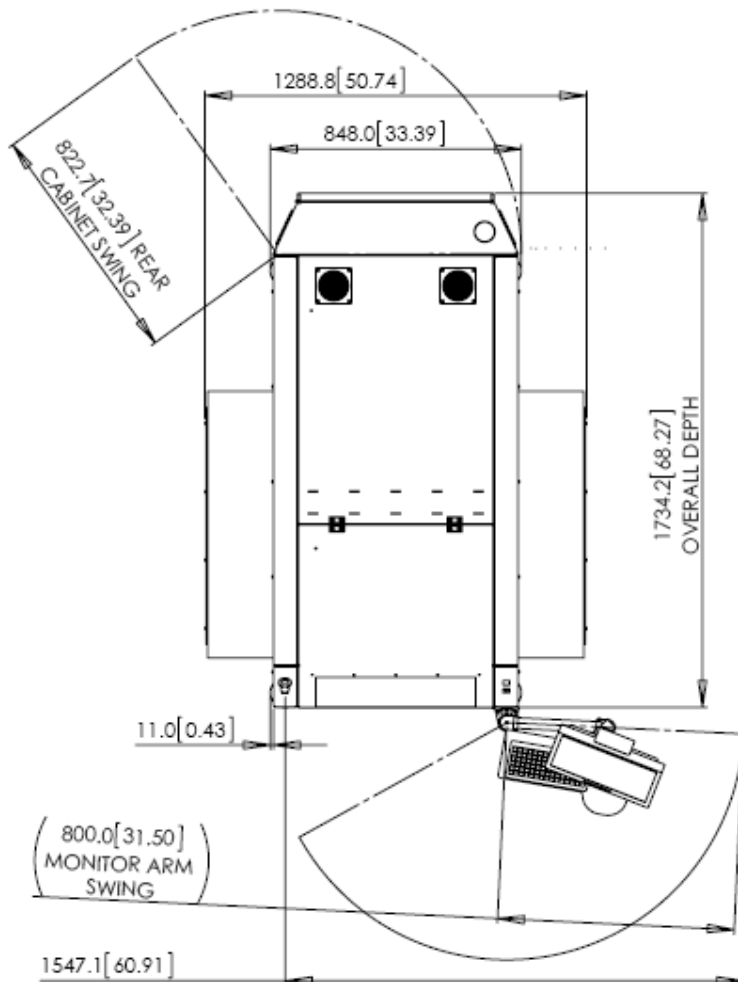
ATTENTION

- ITW EAE recommends extended forks of 5 ft to 6 ft (152.4 cm x 182.8 cm) in length to ensure proper weight distribution when lifting the PRODIGY from the skid.
- Make certain that the forks have a total width/span of 3 ft (91.44 cm).
- Place the forks approximately one foot from the front legs (because the center of gravity is towards the front of the dispenser).
- The forklift must be capable of lifting 3000 lbs (1360.7 kg).

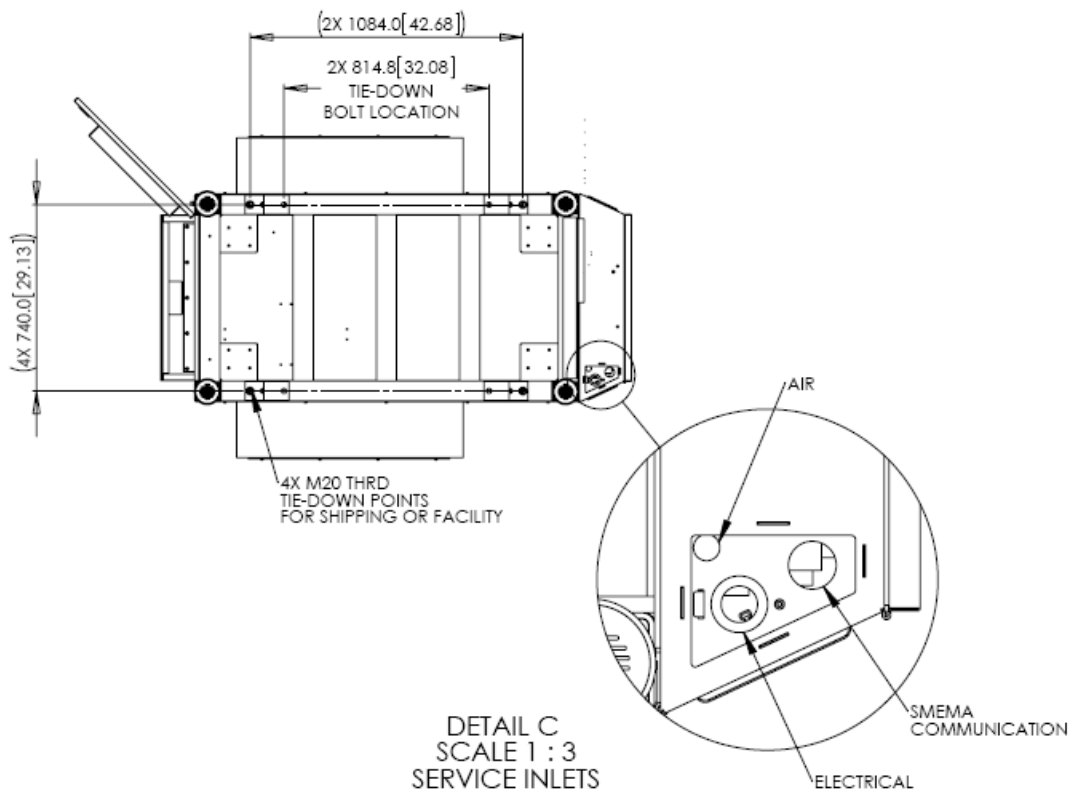
PRODIGY Footprint



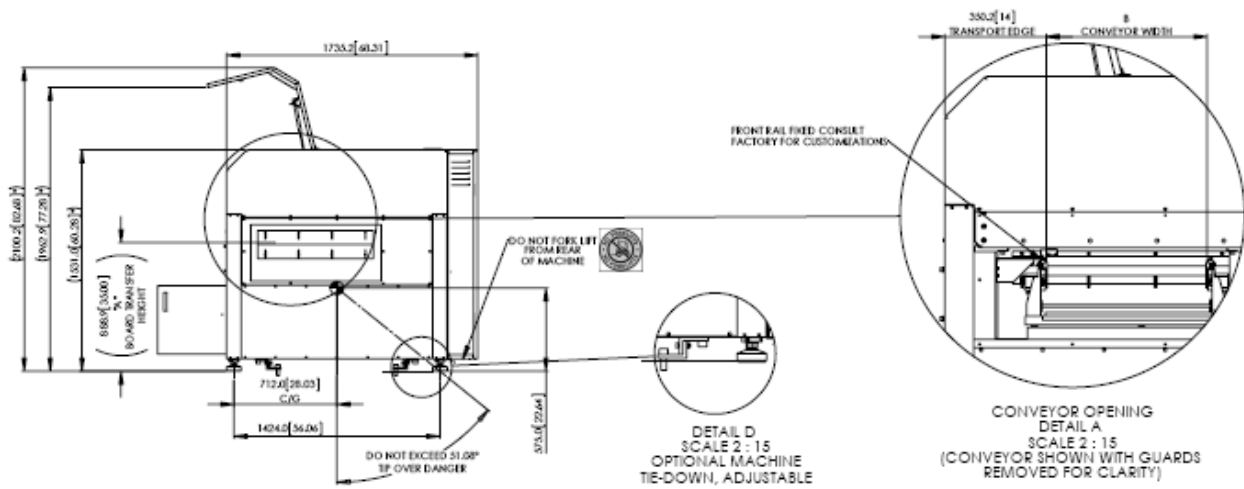
PRODIGY Footprint - continued



PRODIGY Footprint - continued



PRODIGY Footprint - continued



TRAINING AT INSTALLATION

As part of the Installation process, ITW EAE offers a complimentary “up and running” training program. This covers the basic operation, maintenance and programming of the printer and associated options.

- Pumps, material and boards are required for test printing
- Required floor space needed for the machine
- Availability of upstream and downstream conveyors

Training Summary

Customer Start-Up Assistance Training

- The FSE (field service engineer) will provide maximum of eight hours of training for up to four process engineers*
 - If possible, use several different combinations of boards and material
- The FSE will provide a maximum of four hours of training for up to four operators*
- The FSE will provide a maximum of eight hours of training for up to four maintenance technicians*
- Verification alignment accuracy of the board and material
- The FSE will then demonstrate that the system performs to specification (where possible) using the customer’s production materials

***NOTE:** The customer's personnel are expected to devote the entire time to the training program. Hours not devoted by the customer may not be “banked” for later use.

Additional Training

A full range of training courses are available covering operation, maintenance and process. Courses are conducted at our ITW EAE headquarters in Franklin, MA.

For further information, including course descriptions and schedule please contact the Training Department or visit <http://www.itweae.com/services-and-support/americas>

NEED CONSUMABLES?

*For current pricing and availability on Consumables for your dispensing platform please contact our Parts Department at usparts@itweae.com. For any questions you may also contact us at 800-737-8110.