



Electronic Assembly Printers



## INTRODUCTION

Thank you for purchasing your MPM screen printer.

This document contains information to answer all the frequently asked questions in relation to the installation of a MPM screen printer.

Section 1 – Important Installation Requirements

Section 2 – Machine Foot Print

Section 3 – Training

If you have any further questions please don't hesitate to contact the MPM Customer Support Group @ 800-737-8110 or [mtsc@itweae.com](mailto:mtsc@itweae.com).

Thank you for your cooperation, may I take the opportunity of wishing you many years of quality production with your new MPM screen printer.

Sincerely,

Pat O'Brien  
Vice President/General Manager

## PREINSTALLATION CHECK LIST

### Are you ready for Installation?

Item		Confirm
Pallet Jack/Fork Lift (Capable of lifting 3000 lbs (1360.7 kg))		<input type="checkbox"/> Yes <input type="checkbox"/> No
Main Supply Machine configured for 200-240V	_____ Voltage	<input type="checkbox"/> Yes <input type="checkbox"/> No
Pneumatic Supply 90 psi @ 4cfm (standard run mode) to 18cfm (Vacuum Wipe) (6.20 @ 1.9L/s to 8.5L/s), 12.7mm (0.5") diameter line	_____ Bar	<input type="checkbox"/> Yes <input type="checkbox"/> No
Print Medium (Solder Paste)		<input type="checkbox"/> Yes <input type="checkbox"/> No
Test Product (Stencil & Boards)		<input type="checkbox"/> Yes <input type="checkbox"/> No
Squeegees		<input type="checkbox"/> Yes <input type="checkbox"/> No
Registered on Speedlineonline.com		<input type="checkbox"/> Yes <input type="checkbox"/> No

\* For any questions or concerns on the above Installation Check List contact MPM's Customer Support Group @ 800-737-8110 or [mtsc@itweae.com](mailto:mtsc@itweae.com).

## Important Installation Requirements

It is critical both your facility and your employees are ready for the ITW EAE field service engineer's visit to install your new machine. Please review the list below and let us know if you have any questions. Failure in preparation may incur delays in the installation.

### Utility and Environmental Requirements

#### Electrical Supply

- Electrical Power 200 - 240VAC ( $\pm$  10%) @ 50/60 Hz 20A,
- Single Phase

**The machine is not supplied with an electrical plug. Please ensure one is made available when the machine is scheduled for installation.**

Pneumatic Supply available at machines installation position.

- Air Supply 90 psi @ 4 cfm (standard run mode) to 18 cfm (vacuum wipe) (6.2 bar @ 1.9L/s to 8.5L/s)
- 12.7 mm (0.5") - Outer diameter, minimum of 9.5mm (3/8") - Inside diameter
- Machine is supplied with fitting that will accept .5" line

#### Other:

##### **Weight:**

##### **Edison Printer (Models 100, 200, 300)**

Crated - 2194 lbs (995 kg)  
Uncrated - 1777 lbs (806 kg)

##### **Height:**

##### **Edison Printer (Models 100, 200, 300)**

Crated - 83" (2159 mm)  
Uncrated - 62.55"(1589mm) at 37"-38" (940mm-965mm) transport height per IPC-SMEMA-9851

##### **Depth:**

##### **Edison Printer (Models 100, 200, 300)**

Crated - 85" (2159 mm)  
Uncrated - 56.70" (1440 mm)

##### **Width:**

##### **Edison Printer (Models 100, 200, 300)**

Crated - 56" (1422.4 mm)  
Uncrated - 50.40" (1280 mm)

##### **Front and Rear Clearance (Minimum)**

##### **Edison Printer (Models 100, 200, 300)**

20" (508 mm)

## Ground Clearance

### Edison Printer (Models 100, 200, 300)

Standard Height 3.4" (87 mm) to 4.4" (112 mm) corresponding to SMEMA transport conveyor height.

## Dimensions and Floor Space Requirements

Install the Momentum in a clean, dust-free environment to ensure proper operation. The installation area should provide a clearance of 2 ft. (0.6 m) around to provide adequate space for service.

## Uncrating

Install forklift blades under the printer base. Confirm that the forklift blades do not pinch any pneumatic or electrical lines and that they fully extend across the printer base.



### ATTENTION

- ITW EAE recommends extended forks of 5 ft to 6 ft (152.4 cm x 182.8 cm) in length to ensure proper weight distribution when lifting the platform from the skid.
- Make certain that the forks have a total width/span of 5 ft (150 cm).
- Place the forks approximately one foot from the front legs (because the center of gravity is towards the front of the printer).
- The forklift must be capable of lifting 3000 lbs (1360.7 kg).

# MPM

Electronic Assembly Printers

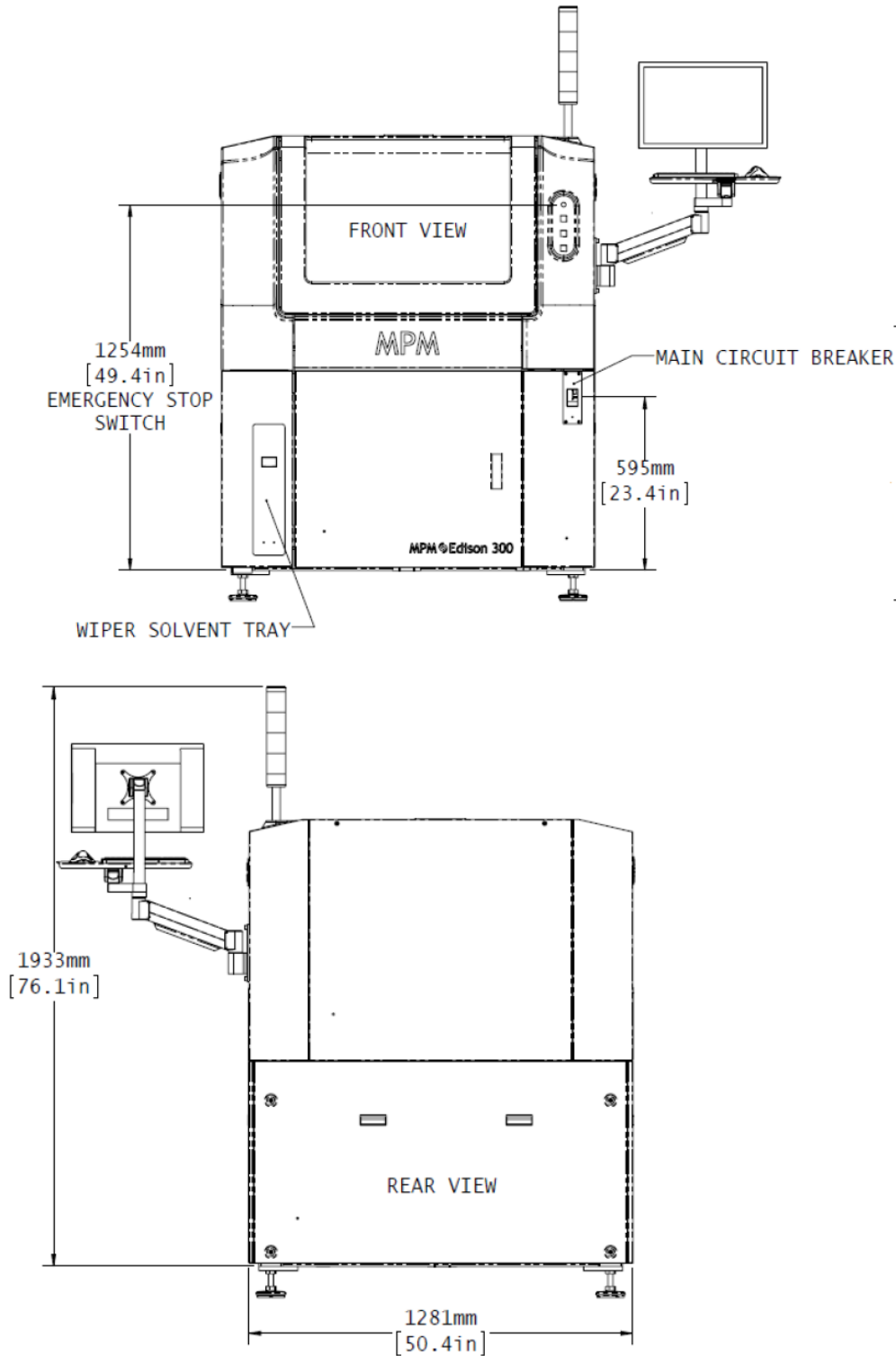
TW EAE



## Installing Feet

Printer feet are installed as each shipping isolator is removed from the bottom of the printer. The feet are installed in the same location as the shipping isolator bolts. When assembling the feet to the Momentum, the orientation of the level mount is such that the washer is on top (against the machine base), and the two hex nuts are below the washer. **NOTE:** For shipping purposes the washer is placed between the bottom of the foot and the hex nut, however when the machine is installed the washer needs to be placed between the bottom of the machine and the top of the hex nut.

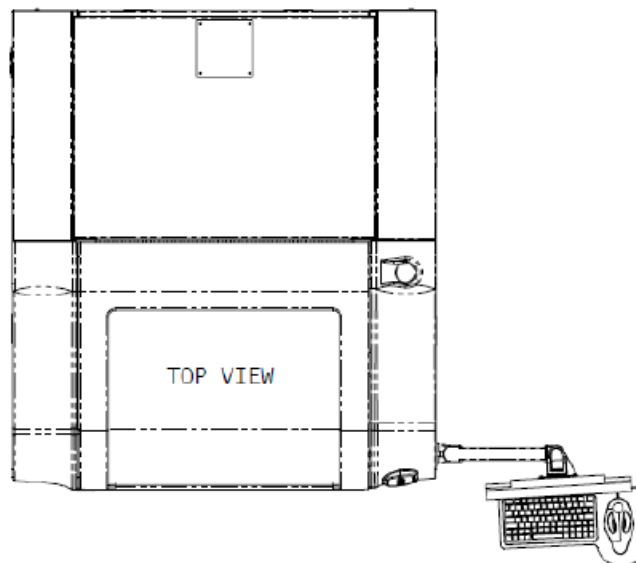
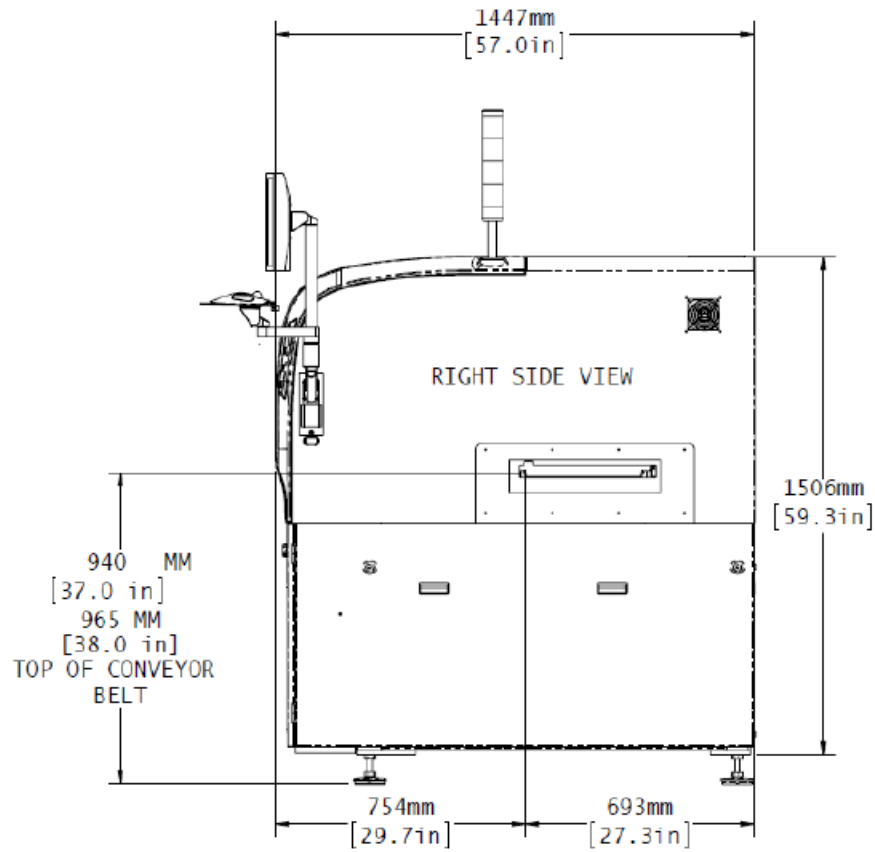
## Edison Series Machine Footprint



# MPM

Electronic Assembly Printers

*ITW* EAE

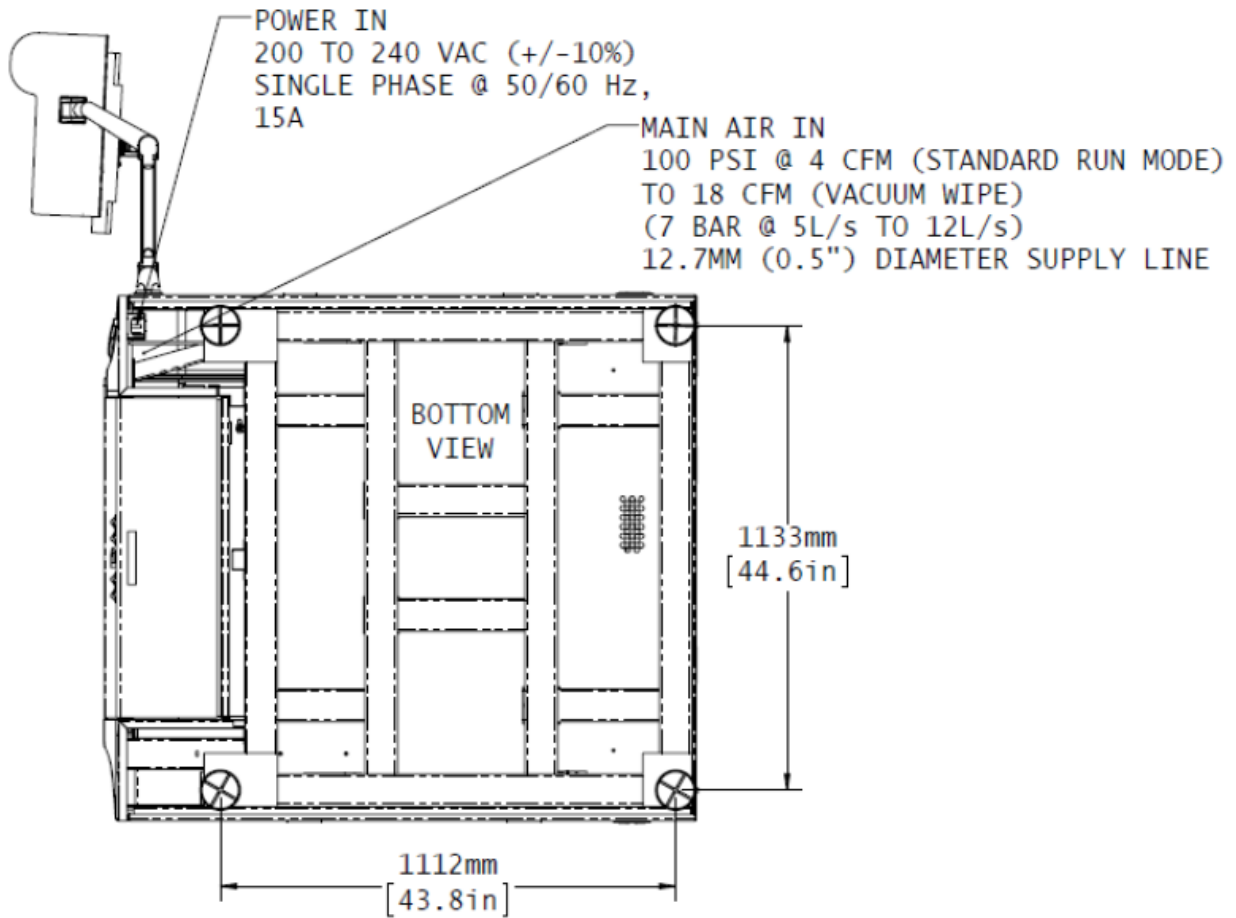


Edison Series Platforms

# MPM

Electronic Assembly Printers

*TW* EAE





## TRAINING AT INSTALLATION

As part of the Installation process, ITW EAE offers a complimentary “up and running” training program. This covers the basic operation, maintenance and programming of the printer and associated options.

- Paste, stencil and boards are required for test printing
- Required floor space needed for the machine
- Availability of upstream and downstream conveyors

### Training Summary

#### **Customer Start-Up Assistance Training**

- The FSE (field service engineer) will provide maximum of eight hours of training for up to four process engineers\*
  - If possible, use several different combinations of boards and stencils
- The FSE will provide a maximum of four hours of training for up to four operators\*
- The FSE will provide a maximum of eight hours of training for up to four maintenance technicians\*
- Verification alignment accuracy of the board and stencil
- The FSE will then demonstrate that the system performs to specification using the customer’s production materials

**\*NOTE:** The customer's personnel are expected to devote the entire time to the training program. Hours not devoted by the customer may not be “banked” for later use.

### Additional Training

A full range of training courses are available covering operation, maintenance and process. Courses are conducted at our ITW EAE headquarters in Franklin, MA.

For further information, including course descriptions and schedule please contact the Training Department or visit <http://www.itweae.com/services-and-support/americas>

## NEED CONSUMABLES?

### Edison Models 100, 200, 300 – Consumables

Part Number	Part Description
<b>Squeegee Blades</b>	
1018140-165	6.5" Trailing Edge Metal Assembly
1018140-220	8.6" Trailing Edge Metal Assembly
1018140-300	11.8" Trailing Edge Metal Assembly
1018140-360	14.2" Trailing Edge Metal Assembly
1018140-460	18.1" Trailing Edge Metal Assembly
<b>Top Clamp Foils</b>	
1023051	Foil, Board Clamp, .004 thick with 3.5mm extension
<b>Vacuum Wiper Paper</b>	
P10450-10	10" Vacuum Wiper Paper
P10450-14	14" Vacuum Wiper Paper
P10450-18	18" Vacuum Wiper Paper
<b>Vacuum Wiper Plenum</b>	
1022647-254	Vacuum Wiper Plenum, 10"
1022647-356	Vacuum Wiper Plenum, 14"
1022647-457	Vacuum Wiper Plenum, 18"

\*For current pricing and availability please contact our Parts Department at [usparts@itweae.com](mailto:usparts@itweae.com). For any questions you may also contact us at 800-737-8110.