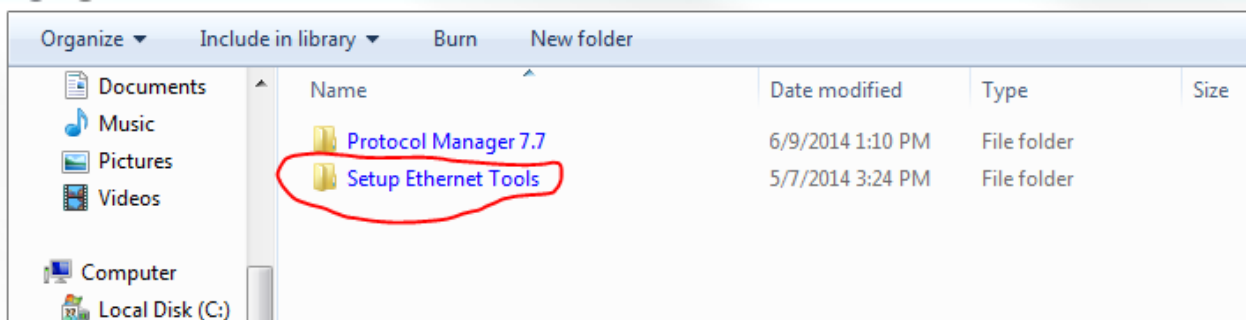


### Setting up Ethernet Communications on the Protocol 3 Control and Protocol Manager Software

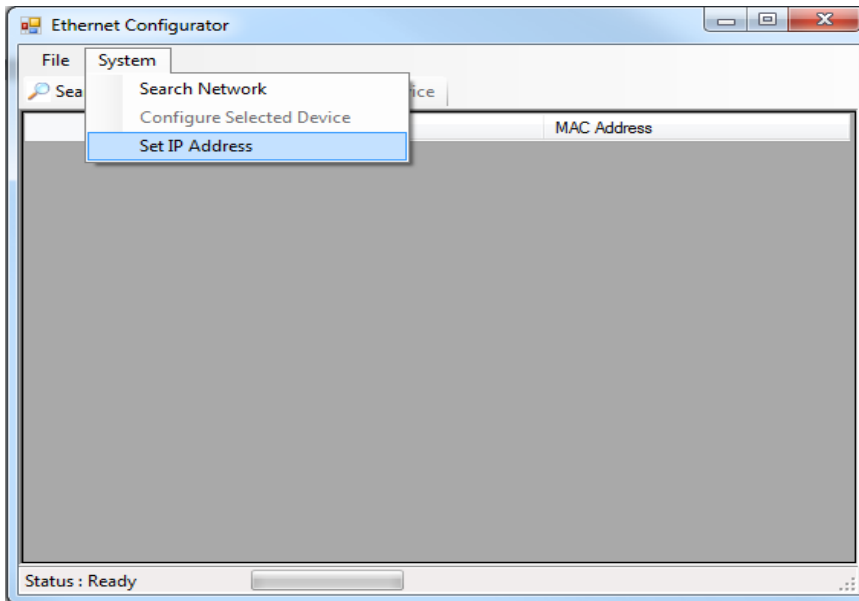
1. Navigate to the contents of the CD that contains the Protocol Manager Software and open the folder with the Ethernet Configurator tool.



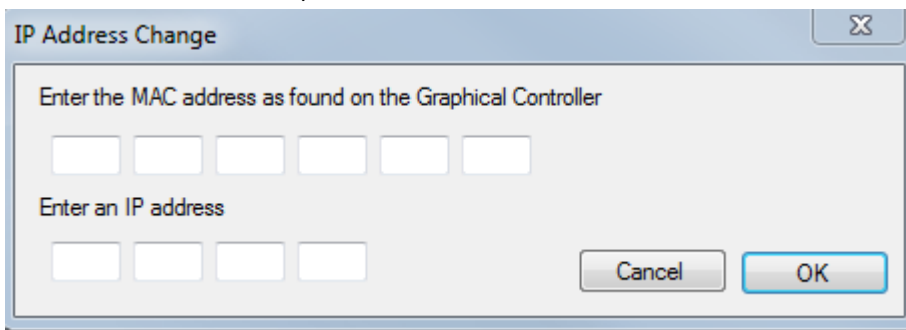
2. Run the SetupEthernetTools.msi file and follow the prompts to install the Ethernet Configurator program.
3. On the Protocol 3 control, remove the back plate to access the circuit board area of the control and record the MAC address listed on the Ethernet communications card on the board of the control. (There are two screws holding the plate in place which can be removed by a Torx 10 bit.)



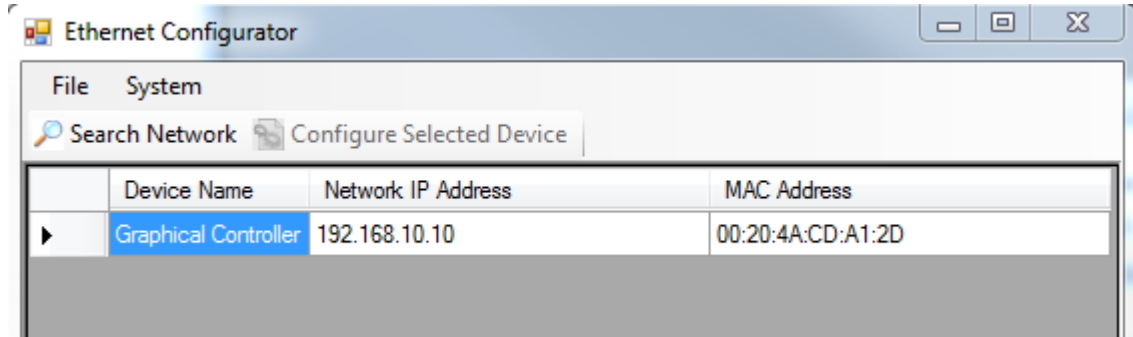
4. Navigate to where the Ethernet Configurator was stored in windows, the folder should be called 'Graphical Controller Tools'. Run the 'Graphical Controller Ethernet Setup' Application.
5. Press Cancel on the Startup Help window that pops up, then navigate to the System menu and select Set IP Address.



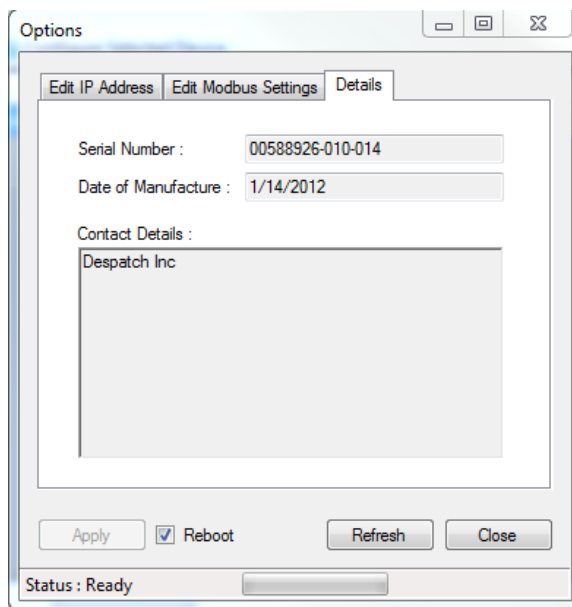
6. Enter the MAC Address found on the Ethernet communications card on the Protocol 3 control and the desired IP address for the control and click OK. (For example if you are connecting to a computer with an IP address of 192.168.10.1, subnet mask 255.255.255.1, you could set the control to 192.168.10.10).



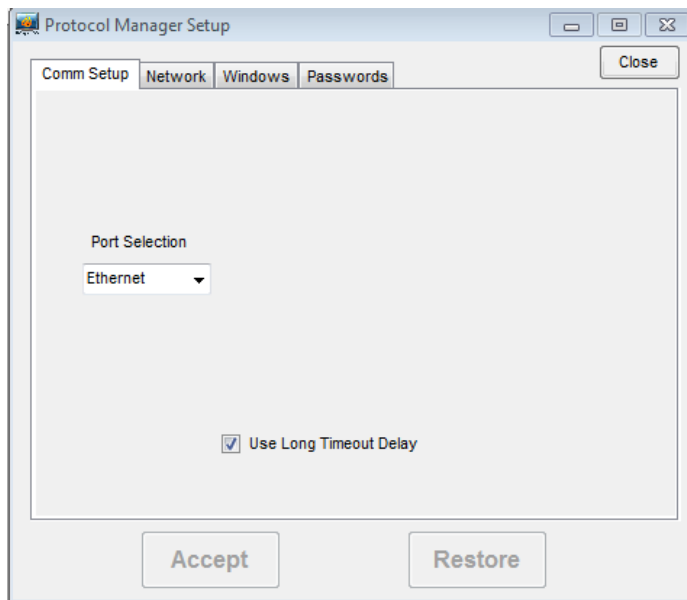
- To test that the controller's IP address has been correctly assigned, click the Search Network icon and the control should appear.



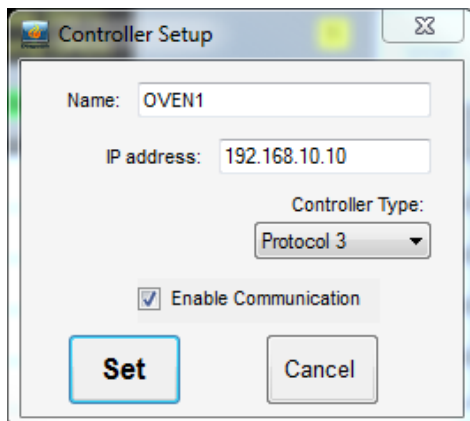
- Double click on the controller's Device Name and a window will pop up with details on the control. Check to make sure the parameters in the Edit Modbus Settings tab match what is programmed into Communications Configuration on the Protocol 3 control.
- Check the Details tab and make sure the three fields fill in with information from the control. If they are blank or you receive an error from the Ethernet Configurator, contact Despatch for additional details as the control will not communicate with the Protocol Manager Software properly.



10. Run the Protocol Manager Software (NOTE: Only Protocol Manager versions 7.7 or later are compatible with Ethernet communications). Login to Admin access, then navigate to the 'Window' menu and select Setup.
11. On the Comm Setup tab, select 'Ethernet' for the Port Selection and click the Accept button. (NOTE: The parameters associated with serial communication may still display to the right of port selection, this will not effect operation of the software and will go away the next time the software is opened.)



12. On the network tab select and click Edit if communicating with an existing control, or click Insert if communicating with a new control. Enter a name, the IP address assigned to the control and select Protocol 3 as control type, then check the Enable Communication box. Click the Set button to confirm the changes.



13. The control should start communicating indicated by the Status field in the Network tab showing Online and the Oven Status box showing Online.

