



# **Kriatec Services Private Limited**

## **Tips and Tricks**

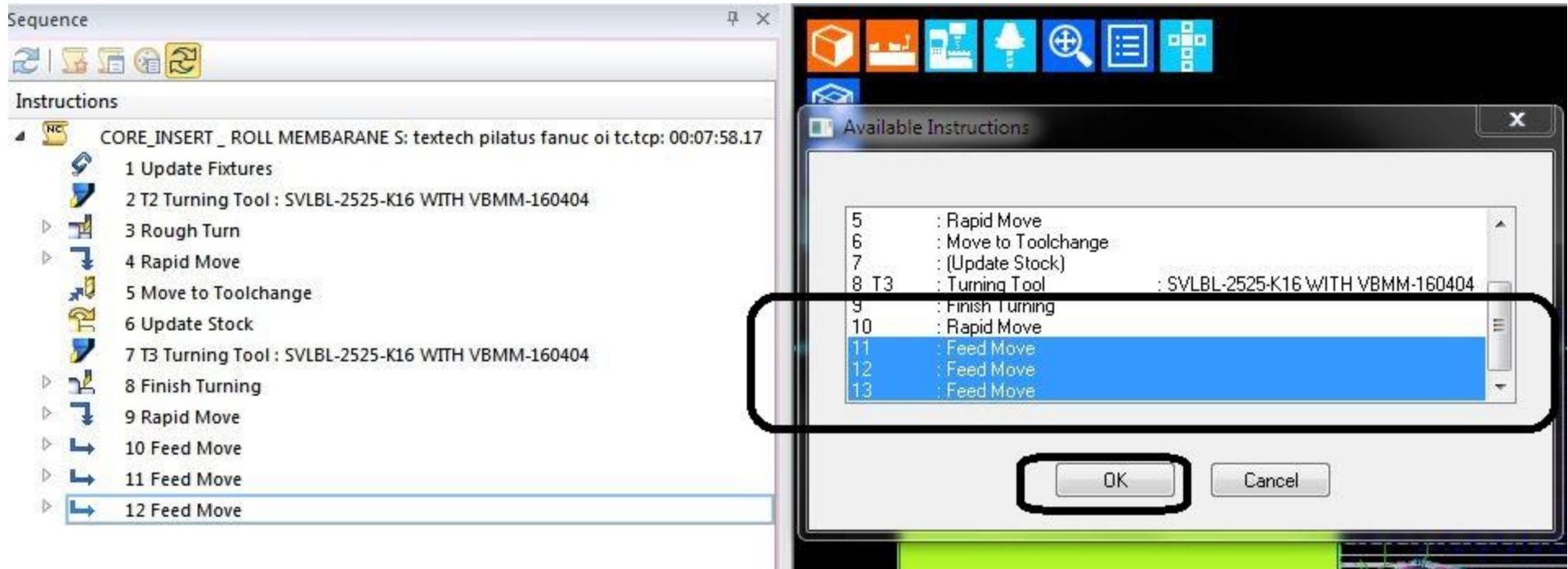
# To change the cutting parameters in one-shot for 2 or more cycles

The screenshot displays the Edgcam software interface. The top menu bar includes File, Setup, Features, Machining, NC Code, Freeware 2015 R2, and five axis. The 'Machining' menu is open, showing options like Move Tool, Verify, Face Mill, Holes, Rough Turn, Finish G, Rough Mill, Milling Cycles, Finish Turn, Turning, Profile Mill, and Rough Groove. The 'Miscellaneous' menu is also open, listing various options such as Synchronise Turrets, Turret Priority, Spindle Control, Select Spindle, Constant Surface Speed, Datum Shift, Reset Rotary Datum, Feed Type, Dwell, Chuck Open/Close, Part Catcher, Update Stock, Update Fixtures, Planar Mode, Rotary Mode, Lathe Setup, Safe Distances, Delete Cache, Machine M-Functions, Transform, Matrix Mode, Instructions, Toggle Toolpath Normals, View Mode, and Select X Axis. The 'Instructions' option is highlighted, and its sub-menu is open, showing Edit, Move, and Copy. The main workspace shows a 3D model of a part with a coordinate system (X, Z) and a tool path. The 'Sequence' window on the left shows a list of instructions, including 'CORE\_INSERT\_ ROLL MEMBRANE S: textech pilatus fanuc oi tc.tcp: 00:07:58.17' and a list of operations like '1 Update Fixtures', '2 T2 Turning Tool : SVLBL-2525-K16 WITH VBMM-160404', etc.

# To change the cutting parameters in one-shot for 2 or more cycles

The screenshot displays the Edgcam software interface. On the left, a 'Sequence' window lists instructions for a program named 'CORE\_INSERT\_ ROLL MEMBARANE S: textech pilatus fanuc oi tc.tcp: 00:07:58.17'. The instructions include: 1 Update Fixtures, 2 T2 Turning Tool : SVLBL-2525-K16 WITH VBMI, 3 Rough Turn, 4 Rapid Move, 5 Move to Toolchange, 6 Update Stock, 7 T3 Turning Tool : SVLBL-2525-K16 WITH VBMI, 8 Finish Turning, 9 Rapid Move, 10 Feed Move, 11 Feed Move, and 12 Feed Move. A central 'Edit Instructions' dialog box is open, showing the 'General' tab. The 'Global' checkbox is checked and highlighted with a black box. Other options include 'Screen Snap', 'Operations', 'Redraw', and 'Disable Automatic Regeneration'. The 'OK' button is highlighted with a red box. The background shows a 3D CAD model of a part with a coordinate system (X, Y, Z) and a toolpath visualization.

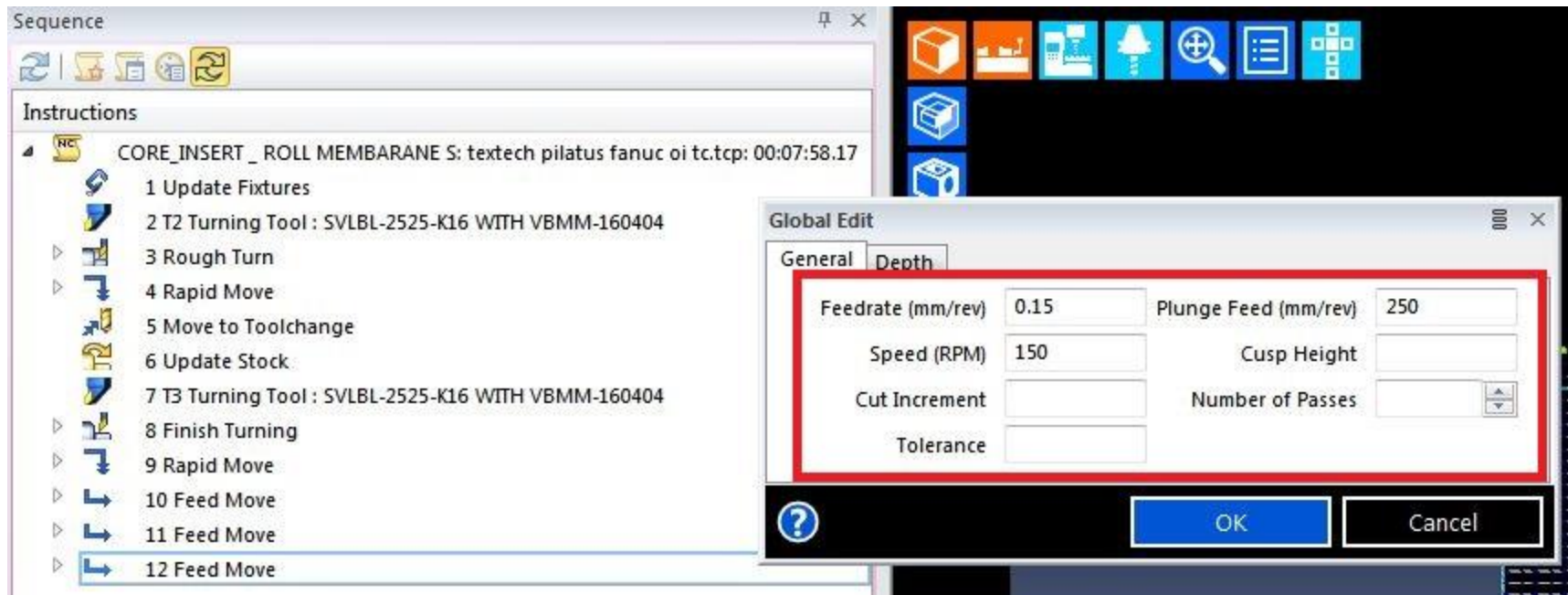
# To change the cutting parameters in one-shot for 2 or more cycles



Select the required cycles or feed moves



# To change the cutting parameters in one-shot for 2 or more cycles



Change the cutting parameters