



InterConnect

Archive Plugin for Avid Interplay

Archiving and Disaster Recovery for Avid Interplay

- You need to free up space on your Avid production storage but need Interplay keep the location of all project data
- You would like to keep assets available, on disk, for future projects but do not wish to clog up the fast production storage
- You need a cost effective yet secure nearline storage platform that integrates with and complements your current Avid infrastructure
- You need to access core assets even if your local production facility suffers an outage
- You have footage from the past that gets used regularly but it takes up space on your Avid ISIS storage
- You need to implement a disaster recovery/business continuity strategy
- You are required to ensure your valuable assets are guaranteed to be protected, authentic and available now and for the foreseeable future

If any of the statements above ring true this data sheet explains how InterConnect can help to simplify the preservation of your production assets. Please contact the Object Matrix team to arrange a demonstration or to discuss the benefits of the InterConnect application in more detail.

+44 (0) 2920 382308 or sales@object-matrix.com

InterConnect Benefits

- Free up space on ISIS without the Avid Interplay Archive Engine
- Provides instant access to archived clips in the event of a local outage
- Archive whole project folders with simple drag & drop operation within Interplay Access
- Archives all resolutions or selected resolutions of an asset
- Archives media associated with Assets, Sequences & Sub-clips
- Archives related assets that are also checked into Interplay
- Handles media that not yet been checked into Interplay
- Schedule data to be moved when convenient or on demand
- Archives meta-data so you can search when Interplay is not available
- Optionally delete media from ISIS after successful archive
- Should Interplay not be available media can be restored from MatrixStore using the Media Tool inside Media Composer
- Archive shared assets only once (option)
- View status of each asset in Interplay Access via status column
- Create multiple, independent archives providing varied data protection levels and policies (News, Sport, etc.)
- Supports Partial Restores
- Restore from deep archive (LTO/ODA)

The Details

With the explosion in file-based rushes and the move to HD,3D and UHD the demands placed on the production storage platforms have increased beyond their capabilities. Production facilities have been filling up their editing shared storage because they have no alternative or the alternative does not play nicely in an Avid Interplay environment. One of the major challenges facing administrators is freeing up space on their Avid ISIS to allow new projects to commence or to ensure unfinished projects can be completed. Another challenge is creating workflows that ensure that the data is authentic and protected from accidental deletion.

InterConnect from Object Matrix is an application that allows Avid administrators to archive media to MatrixStore nearline storage directly from Avid Interplay, without requiring the Interplay Archive Engine. Most operations (archive, restore, delete etc.) are performed simply by dragging and dropping projects or individual assets into the folders pane of Interplay Access application. InterConnect is implemented as a service on the Windows platform so it is always running in the background silently protecting your assets leaving you to get on with other tasks. A monitoring tool is also provided should you wish to check the progress of current or historic jobs. The integration with Interplay utilises the powerful Avid Web Services APIs ensuring assets can be moved, copied, deleted and tracked with the minimum of effort.

Broadcasters and larger post-production facilities are choosing MatrixStore and InterConnect to provide a secure and cost effective nearline platform that complements their existing Avid infrastructure. In conjunction with MatrixStore replication, InterConnect also keeps their content available even in the event of a local outage. MatrixStore vault technology also enables non-Interplay and non-Avid workflows using the same MatrixStore cluster.



ObjectMatrix

InterConnect

Archive to MatrixStore

With InterConnect installed, you can archive a project simply by selecting its folder inside Interplay Access, or via Media Composer, and copy-and-pasting it to a 'To Be Archived' folder. All Avid assets in the folder, and their associated media files, will then be archived (immediately or at a scheduled time) to MatrixStore by the InterConnect service running in the background.

When the project has been archived, it disappears from the To Be Archived folder and appears in the Archived folder. The original project plus its associated media may now be manually deleted (InterConnect never deletes any media itself). All media archived with InterConnect is also accessible through the Object Matrix DropSpot application.

As each asset is archived, the MatrixStore status column in the Assets pane within Interplay Access is updated. A system log is also kept of every asset that has been archived to MatrixStore that allows administrators to verify the archive status.

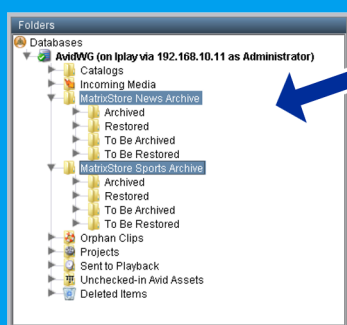
Restore from MatrixStore

To restore an archived project, copy it from the Archived folder to the To Be Restored folder; the InterConnect service will then copy all media files from MatrixStore back to their original locations. If the original location is not available simply choose an alternative. It is possible to restore entire projects with a single click or retrieve only the single clip you need.

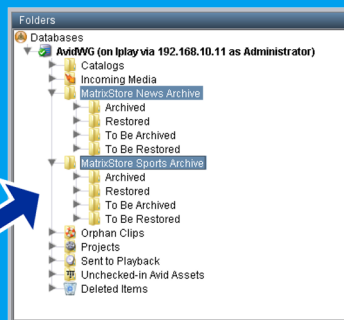
When the project has been restored, the folder disappears from the To Be Restored folder and appears in the Restored folder, from where it can be moved to any project folder.

It is also possible to retrieve data from deep archive (LTO/ODA) in the same manner using the Object Matrix move2 product in conjunction with InterConnect.

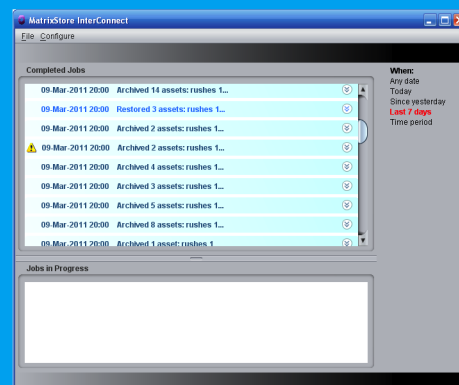
Request a Demonstration: sales@object-matrix.com



To Be Archived



To Be Restored



Monitor & Administration

Monitoring and Administration Applications

It is very important to be able to view progress information for current jobs or review the status of jobs completed or paused in the past. The InterConnect administration applications allow you to:

- See the status of assets that are currently being copied
- Choose resolutions to archive
- Schedule when to perform the operations
- Browse through all assets that have previously been copied
- Restore assets that have been deleted from the "Restored" folder
- Monitor where assets reside (on MatrixStore or in deep archive)
- Configure system settings

System Requirements

- Avid Interplay
- Avid Shared Storage (MediaNetwork or ISIS)
- Avid Web Services

InterConnect can be supplied packaged on an Object Matrix hub server. Alternatively the minimum specification for a client to run InterConnect from Object Matrix:

- HP z400, 6GB RAM, 500GB internal drive
- Quadro 2000 graphics
- 6 core 3.33 Processor
- Avid compatible network interface card