

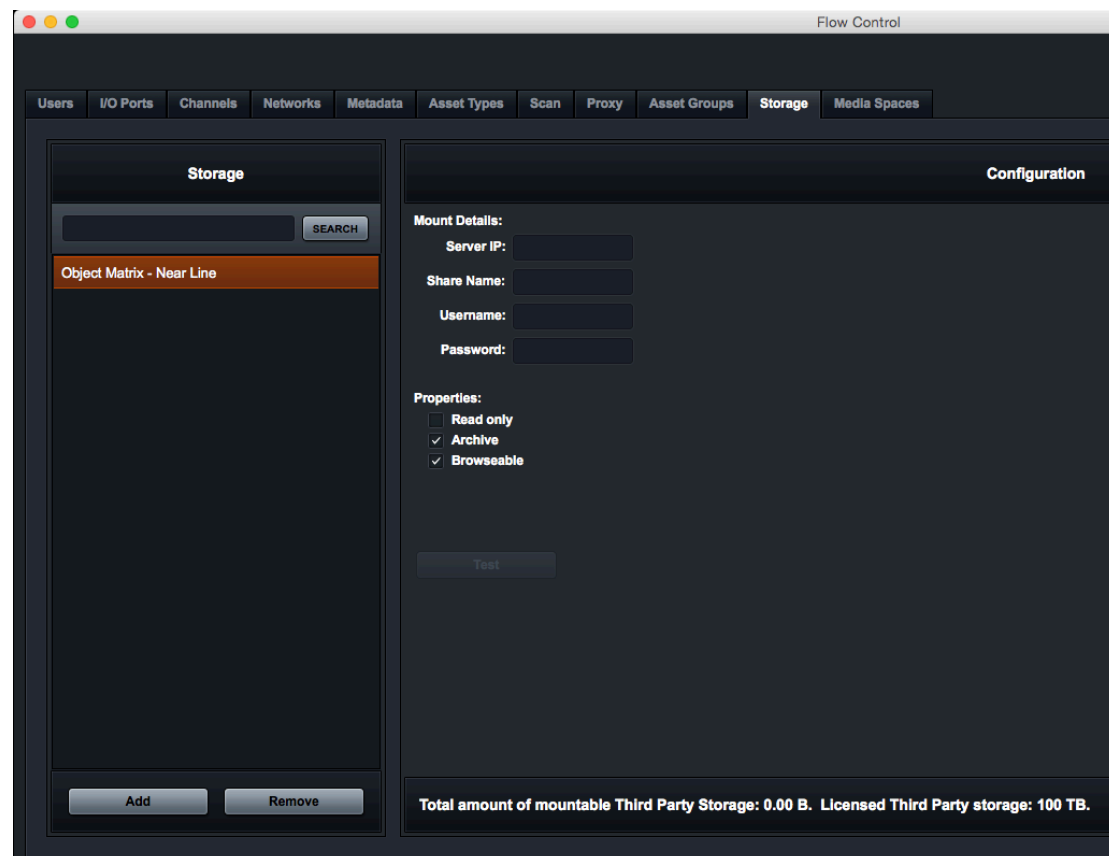
Object Matrix with EditShare User Guide.

Basic Configuration

Use the Object Matrix Hub to provide traditional network shares of the Vaults you wish to use with EditShare.

On EditShare there is a licence fee for each 25TB of Third Party Storage managed by Flow. This figure can be made up of a number of separate shares.

Then in Flow Control add these shares on the STORAGE tab;

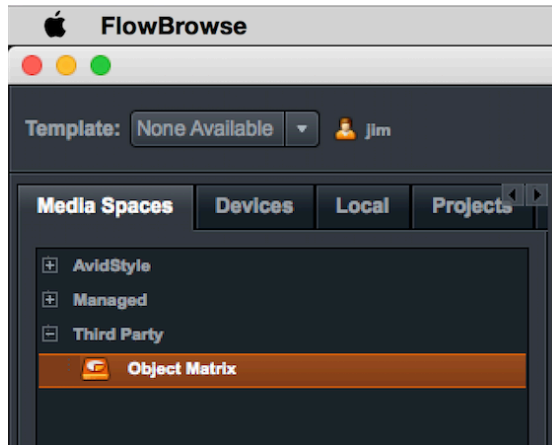


Object Matrix is configured as **Archive** so all of the clips here will be seen as archived by Flow and can be restored to EditShare on line storage for editing. It is configured as **Browseable** so it can be seen in Flow Browse. It can be configured as **Read Only** to prevent deletion of content by Flow users with “delete all files” role.

Making media in Object matrix visible to Flow users

Either; run a scheduled Scan job using Flow Control or manually run a scan from Flow Browse of the Object Matrix shares. This will create a head frame for each video clip, audio clip or image file and then start proxy creation.

Each share will display as a media space in Flow Browse



The media viewer will show the Status: as Archived and the Backups: as Disk. The timeline will show as Orange indicating the material must be restored before it can be edited.



EditShare's Ark software is only used for its own Ark Disk Near Line and Ark tape LTO backup hardware to moved media on and off of the XStream online storage

Moving Media to Object Matrix

Media can be moved to Object Matrix storage manually by using the Object Matrix client software on a workstation in which case a subsequent scan will be required to make the head frames and proxies.

Or by using Flow to write media there as the output of a file ingest or transcode operation either from Flow Browse client application or as part of a Flow Automation task.



Sequences can be made using the proxies and these then used to create Restore jobs to pull back only that media that is required for the sequence. This is referred to as Partial File restore.

END.