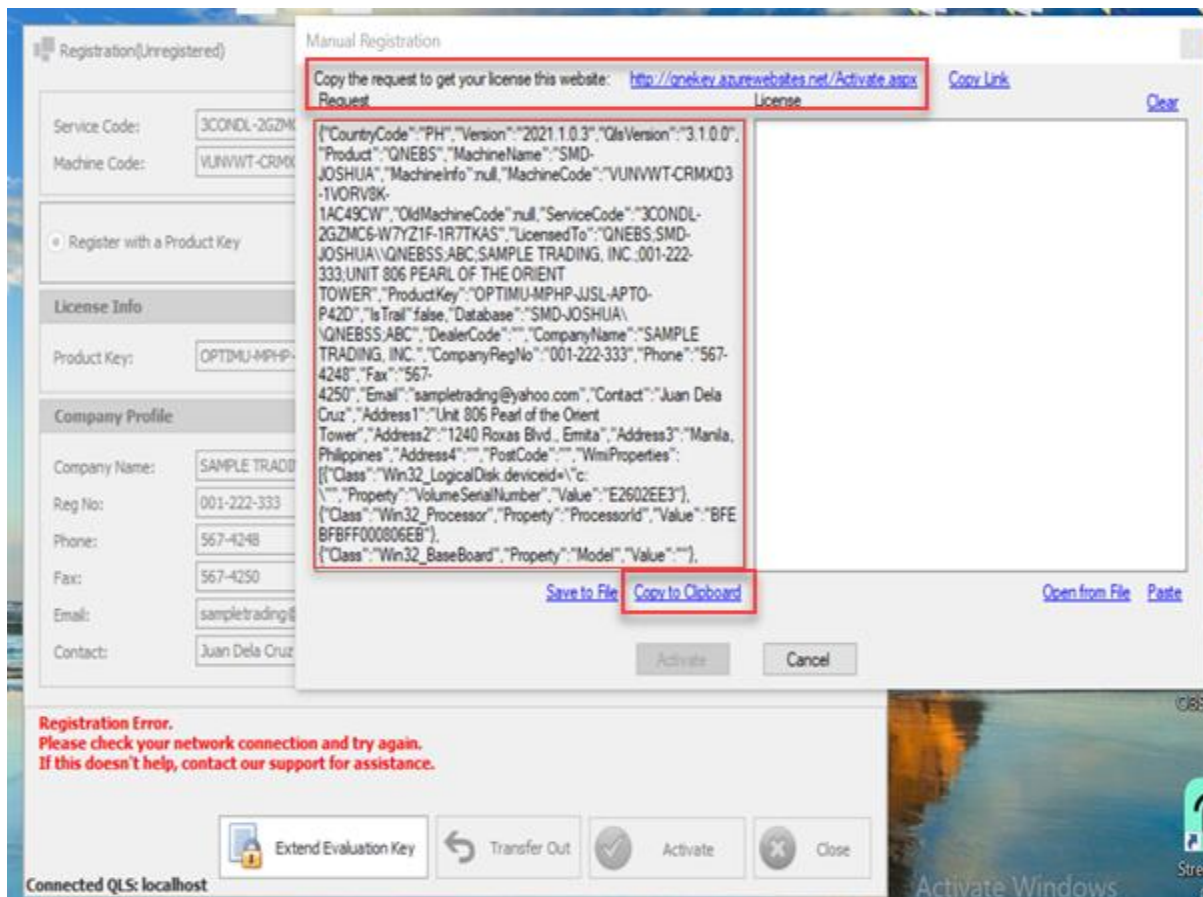




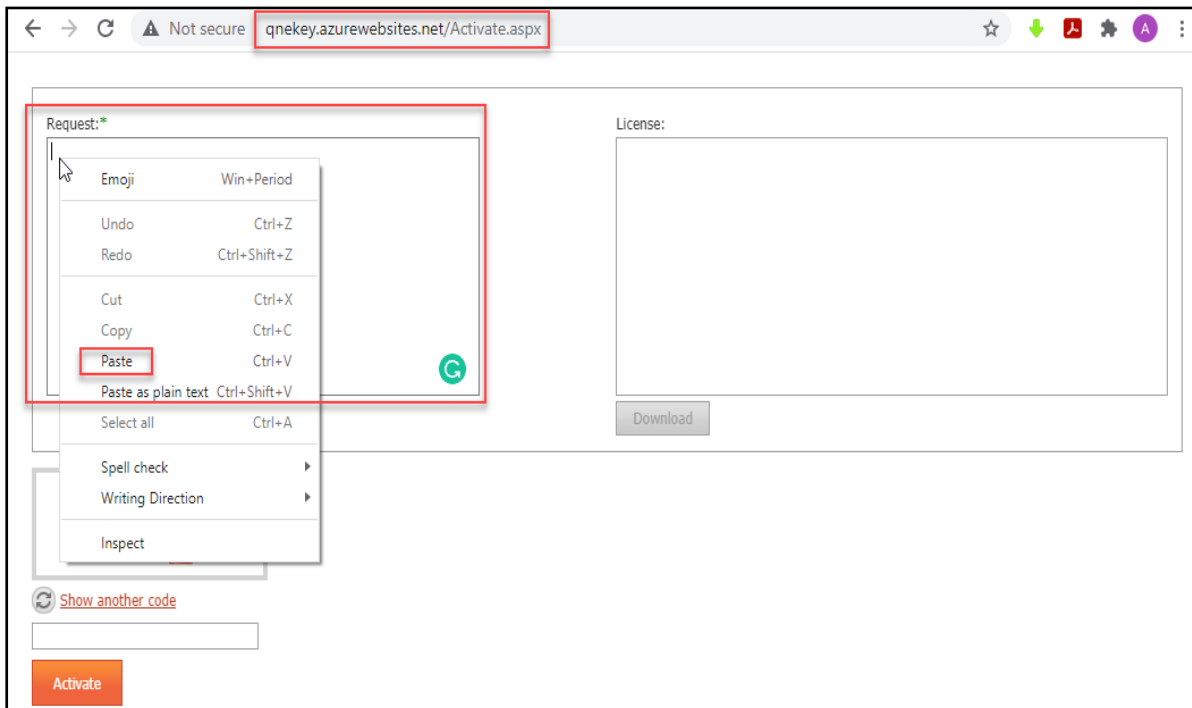
HOW TO MANUAL REGISTER THE DATABASE IN OPTIMUM

Manual registration sometimes happens when your internet connection is slow and/or unstable. You will get a registration error message and the Manual Registration window will appear.

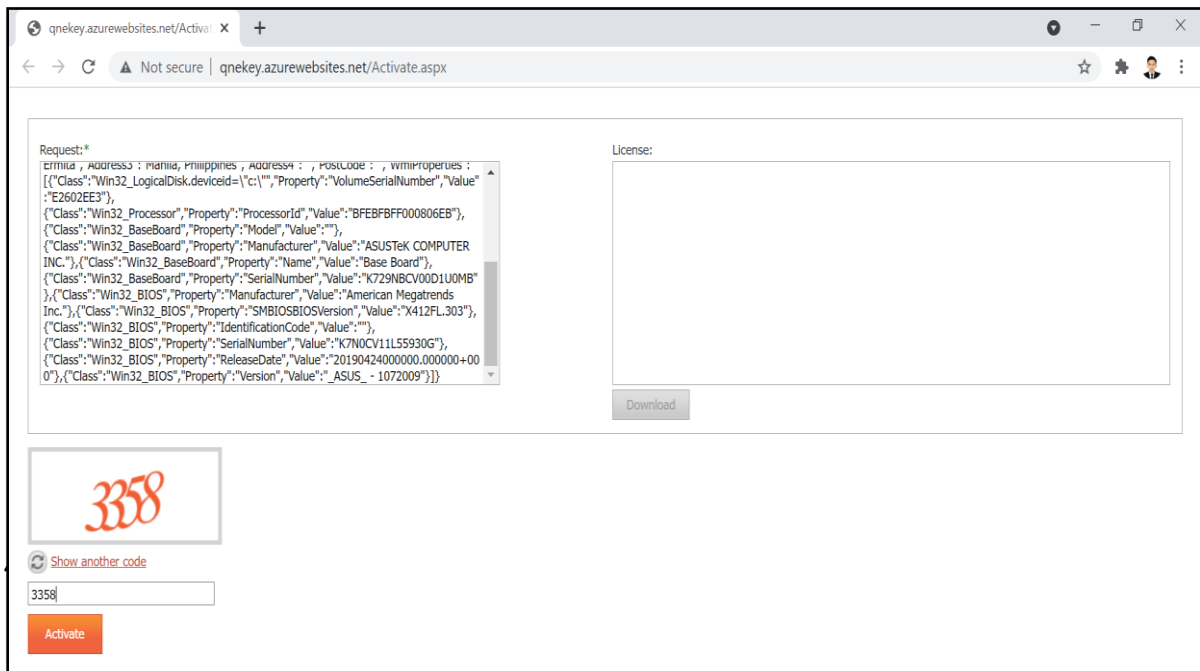
1. On the Manual Registration window, click the [Copy to Clipboard](#) located at the lower left part. This copies all the info inside the Request box. Click the link <http://qnekey.azurewebsites.net/Activate.aspx> and it will automatically open your browser and direct you to that website.



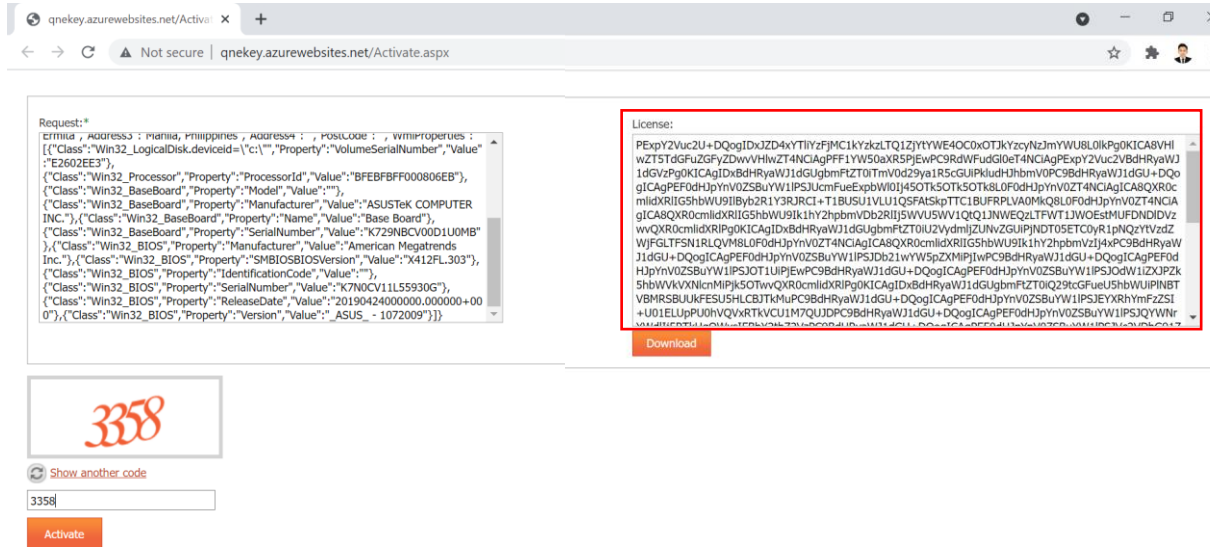
2. On the website, do a right-click inside the Request box (left side) and click **Paste**.



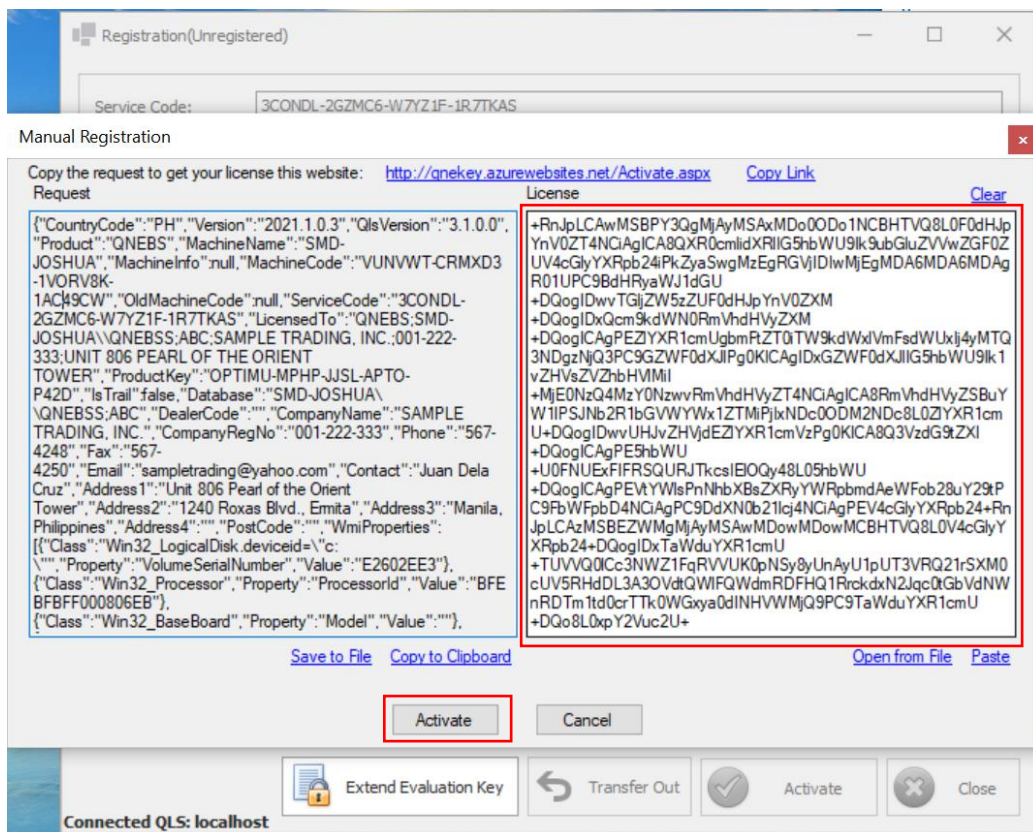
3. Type the code as shown and click the **Activate** button.



- The registration will appear in the License box (right side). Double-click to highlight/select all the texts, then right-click and click on **Copy**.



- Back to the Manual Registration window, right-click inside the License box and click **Paste**. Click the **Activate** button at the bottom part.



Unit 806 Pearl of the Orient Tower, 1240 Roxas Blvd., Ermita Manila, 1000 Philippines

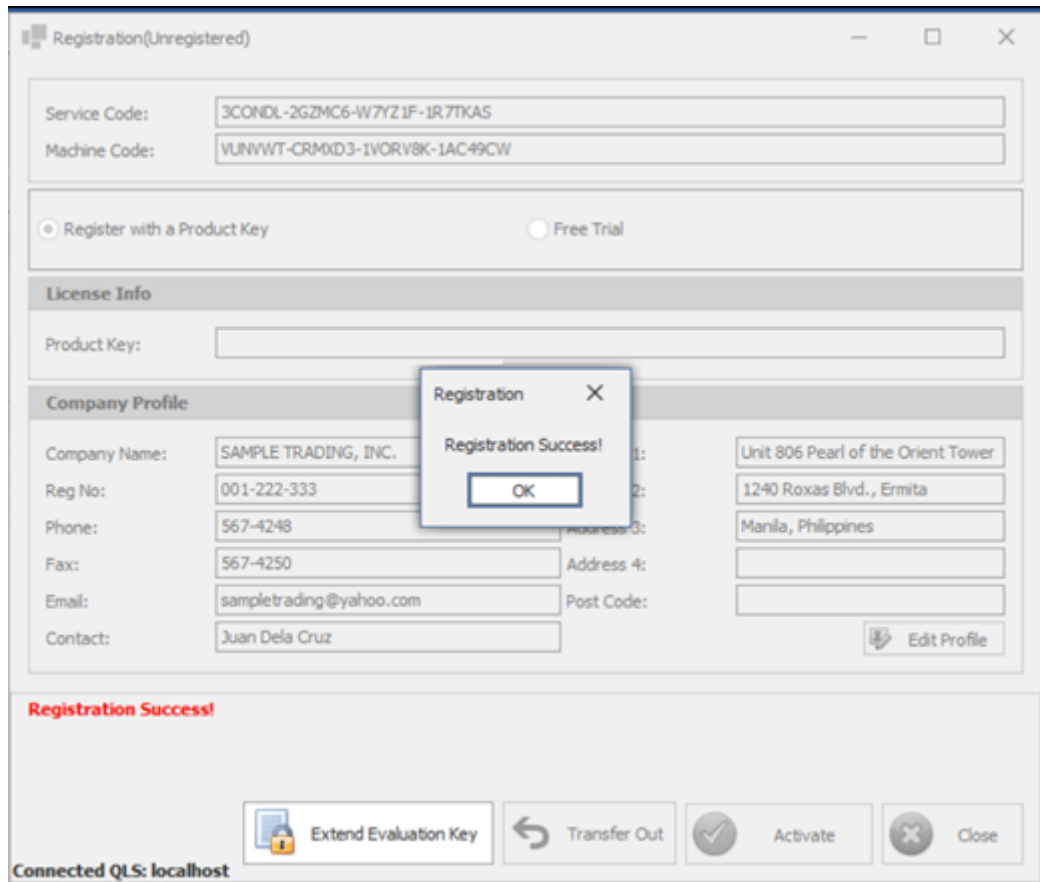
Tel. No.: +63 2 567-4248, +63 2 567-4253 Fax No.: +63 2 567-4250

Website: www.qne.com.ph

Facebook: <https://www.facebook.com/QnEPH>

Follow our Twitter and Instagram account: @qnesoftwareph

6. Once the registration is successful, click OK.



For further concerns regarding this matter, please contact support to assist you or create a ticket thru this link <https://support.qne.com.ph>