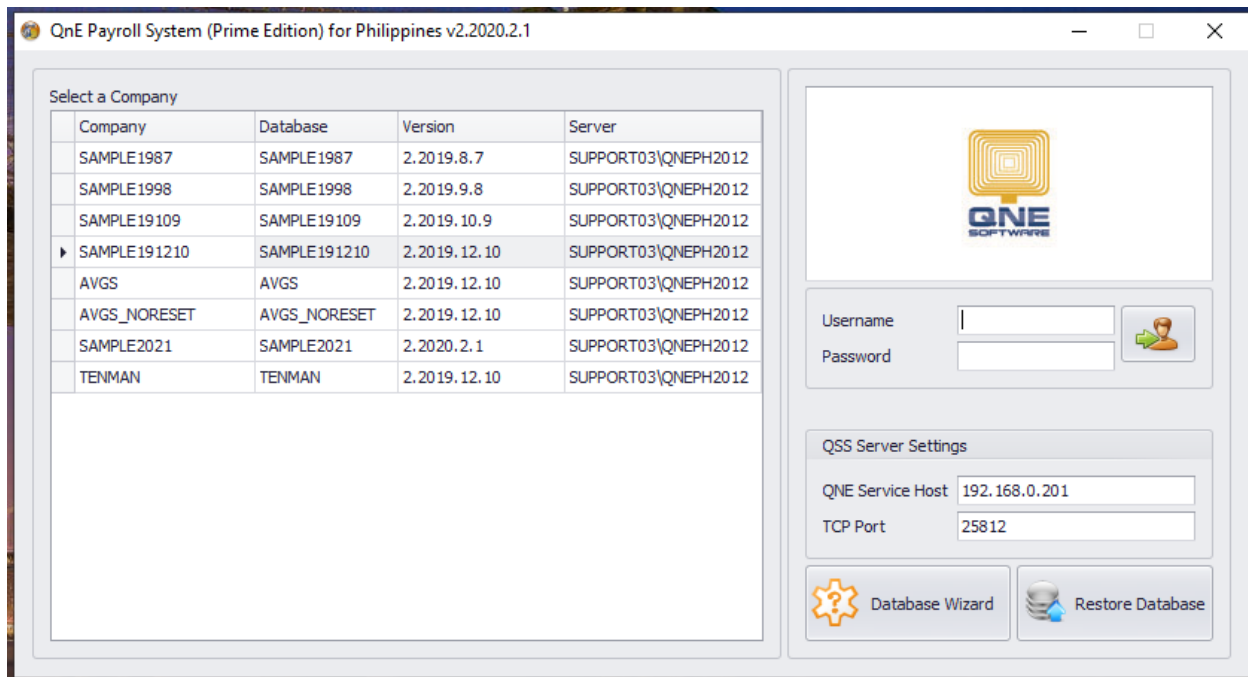




HOW TO COPY LIST OF DATABASES IN THE SERVER TO WORKSTATION IN QNE PAYROLL

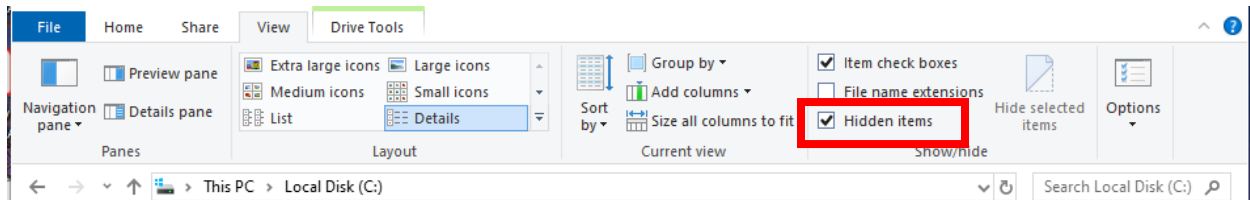
Problem Scenario:

Upon installation of QnE Payroll in the workstation, user had difficulties appending all the databases from the server having lot of databases being maintained.

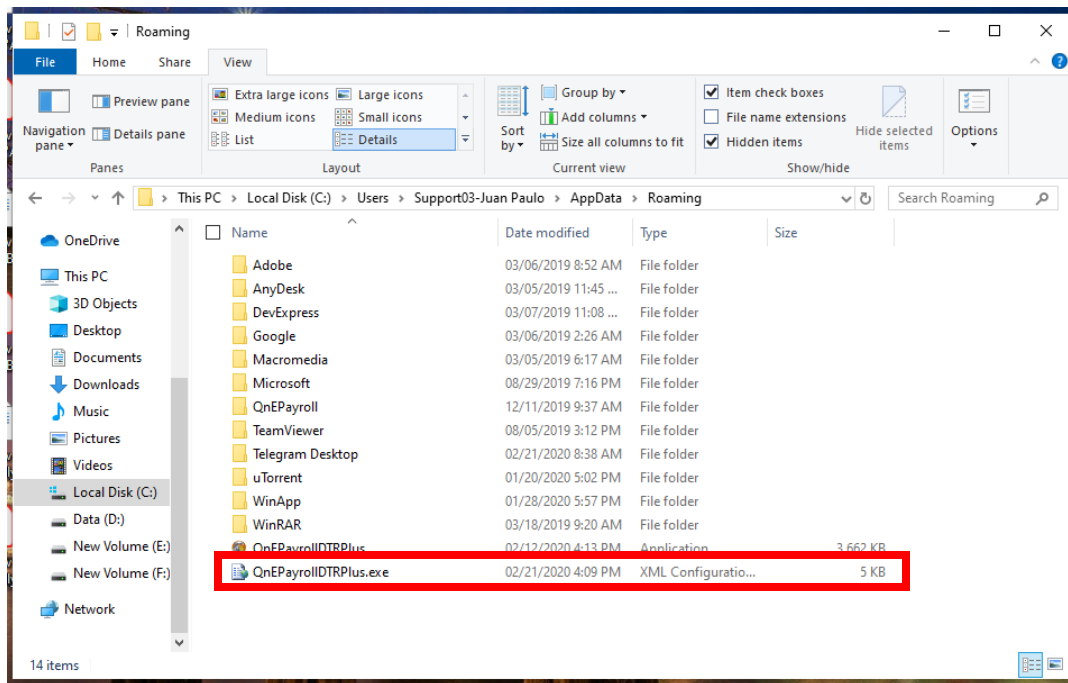


Resolution(s):

In Windows File Explorer, enable show Hidden Items



Go to C:\Users\\AppData\Roaming



Copy the config file to the same path to the workstation. Upon opening the QnE Payroll, all databases in the server are now listed in the workstation.

NOTE:

For further concerns regarding this matter, please contact support to assist you or create ticket thru this link <https://qnesupportph.freshdesk.com>