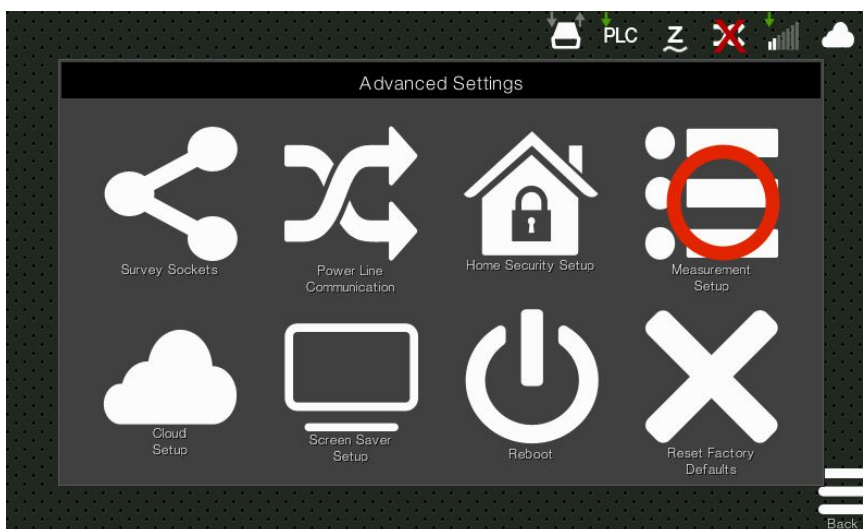
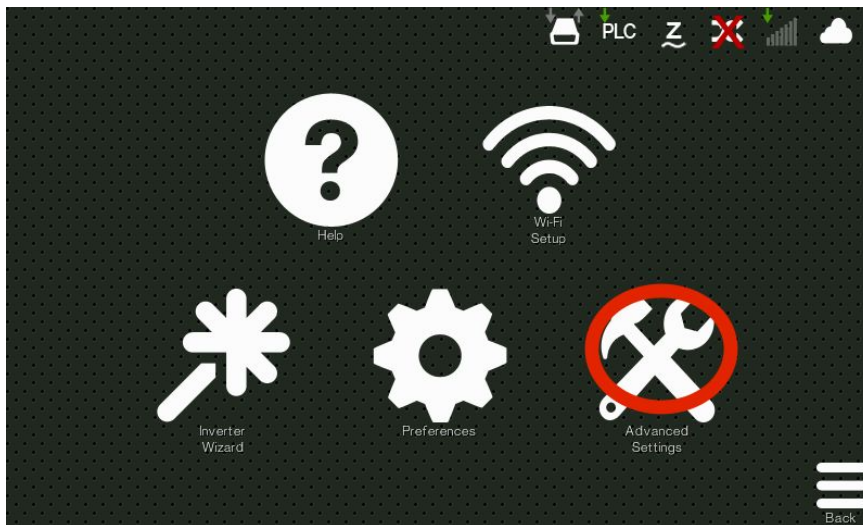
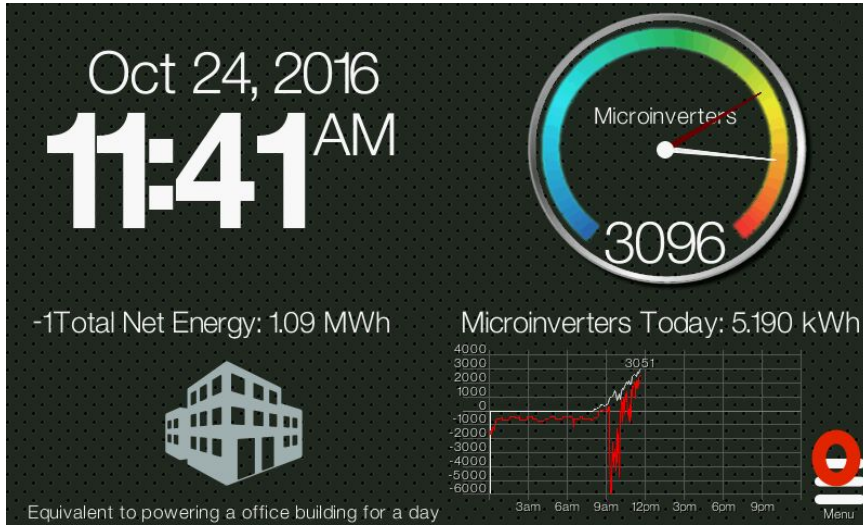


Resetting the Home Energy Module

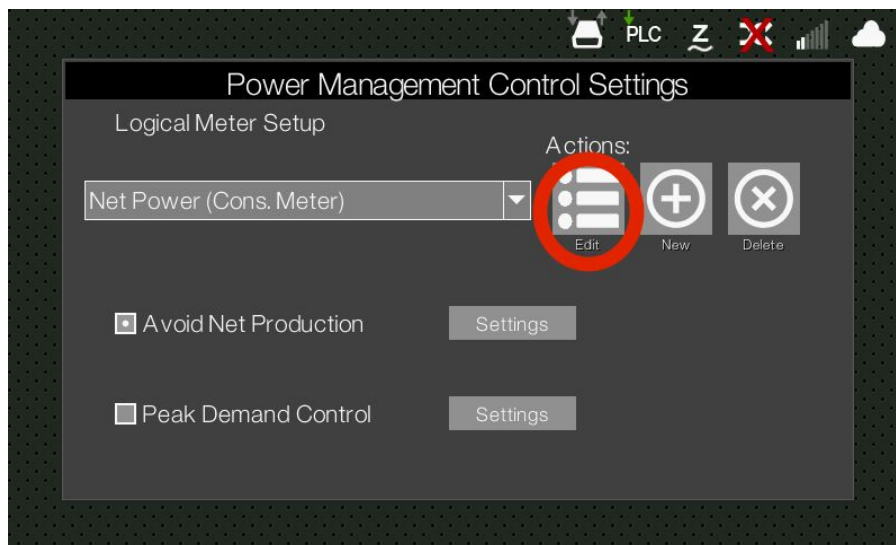
1: Go to Menu>Advanced Settings>Measurement Setup



2: Choose your device from "List of Paired Devices", then choose (Manage Meters)



3: With (Net Power) chosen below "Logical Meter Setup", click the (Edit) button to the right, then copy down the expression in the box below (Net Power)



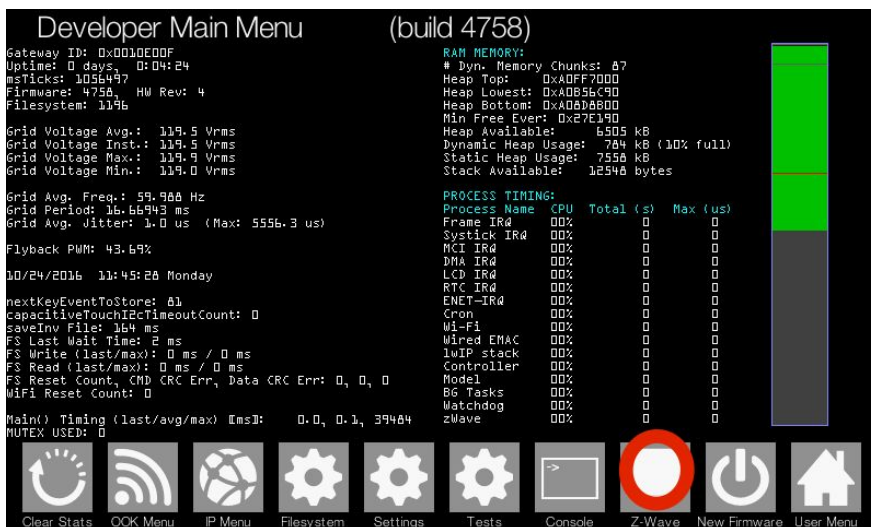
4: Click on the outside of the window to go back a screen, then choose (Net Energy) below "Logical Meter Setup", click the (Edit) button, then copy down the expression in the box below (Net Energy) Press away from the window to exit to previous screen

5: If you have more than one Z-Wave device, follow steps 2, 3, 4 again on the other devices (for Z-Wave repeaters you will not need to copy down the expression)

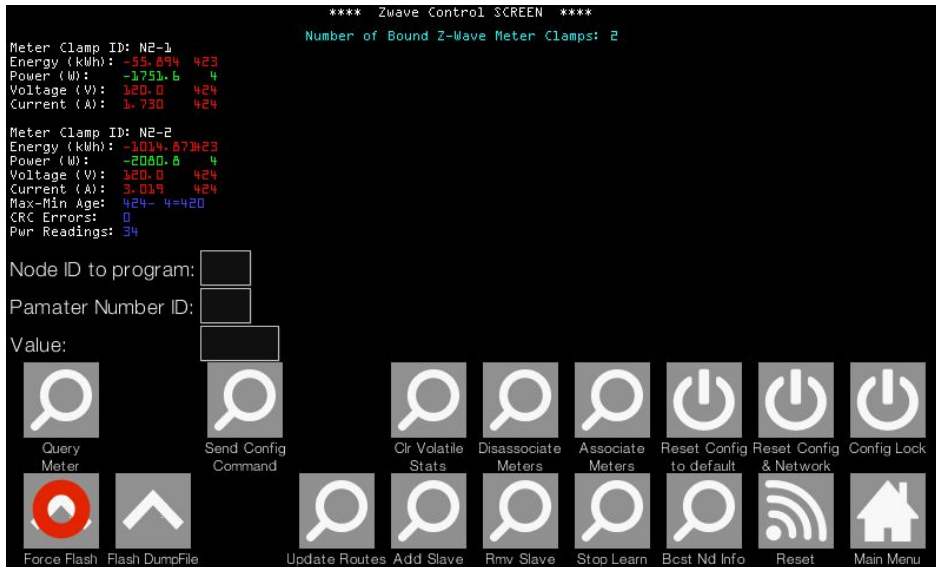
6: Go back to the home screen and click the (Menu) button on the bottom right of the screen, while in the menu, go into our "Secret" Developer Menu by pressing on the top left of the screen where the LCD meets the bezel. The password is "revolution"



7: Choose Z-Wave in the bottom right, then press "Force Flash" in the bottom left, this will completely wipe all Z-Wave memory from the gateway



"The Z-Wave module has been successfully re-flashed" appears on screen once finished

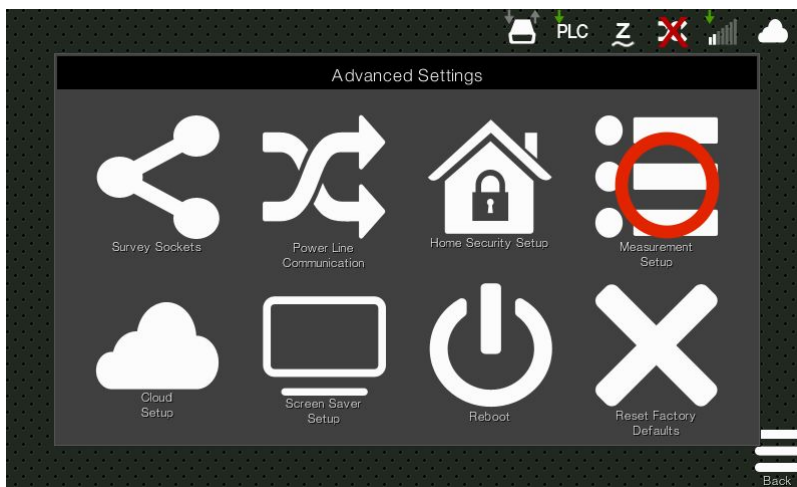
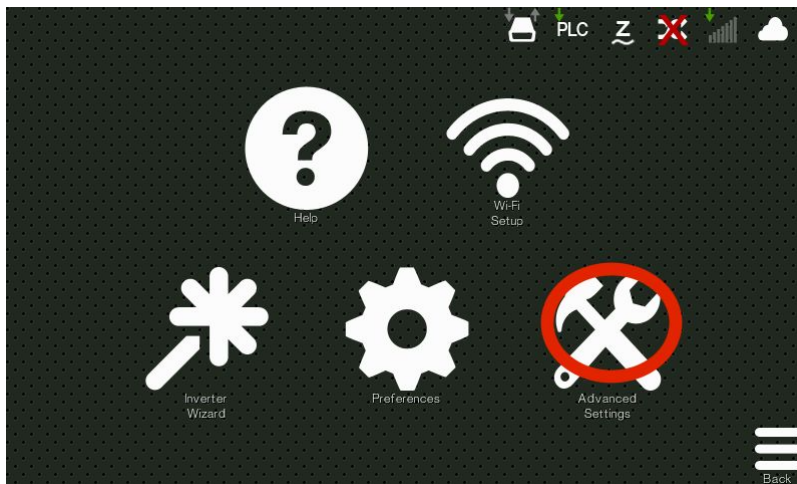
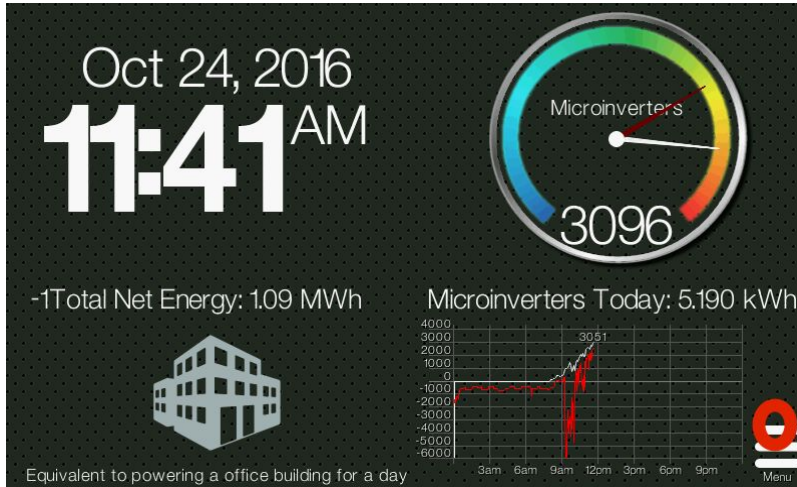


8: Press (Main Menu) in the bottom right, then (User Menu) in the bottom right, to exit back to the Main Menu

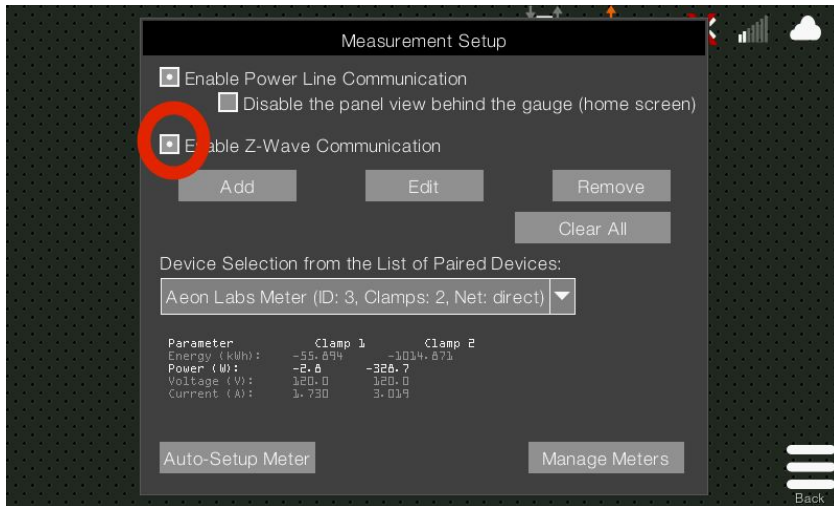
9: Factory Reset your Z-Wave Device, hold down the button on the back of the Home Energy Module for 20 seconds to reset its programming to default

Pairing the Home Energy Module

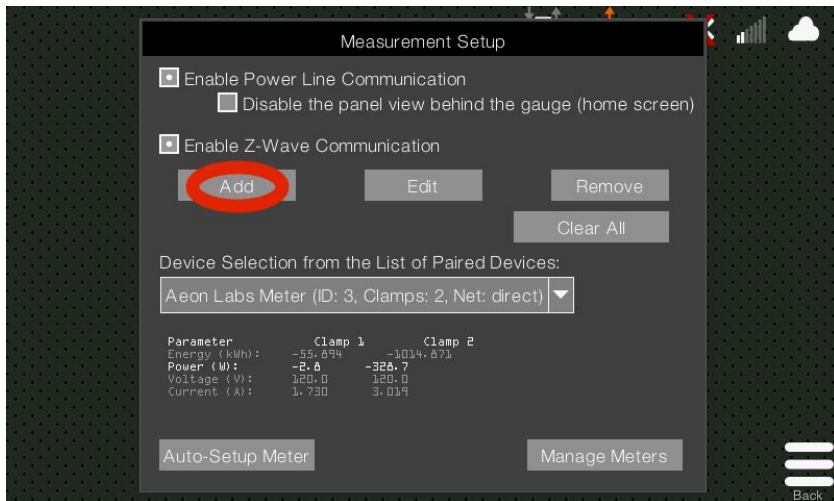
1: Go to Menu>Advanced Settings>Measurement Setup



2: Enable Z-Wave Communication (could be selected already)

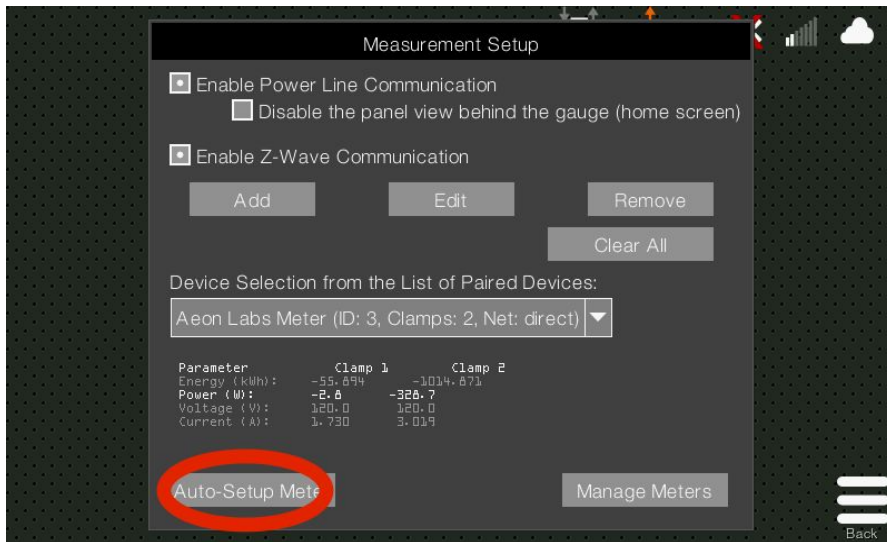


3: Press (Add) and a message will pop up saying "Activate the ZWave device you want to connect to the Gateway", while this message is displayed, click the button on the back of the HEM several times until you see it has been learned into the Gateway.



4: Choose (2) as the Number of CT Clamps, then choose "Consumption Meter" for both clamps

5: Choose (Auto-Setup Meter), then choose (OK) then choose (Net Meter)



6: If you are re-pairing a device that had to be reset, choose (Manage Meters) then press (Edit) next to (Net Power), and make sure that the expression matches the original expression you copied down in the beginning. Press on the outside of the window to exit out of it.



7: Choose (Net Energy) under Logical Meter Setup and press (Edit) to the right of it, make sure the expression in this field matches the original express you copied down in the beginning. Press on the outside of the window to exit out of it.

~ After completing these steps, you will have successful re-joined the HEM to the Gateway