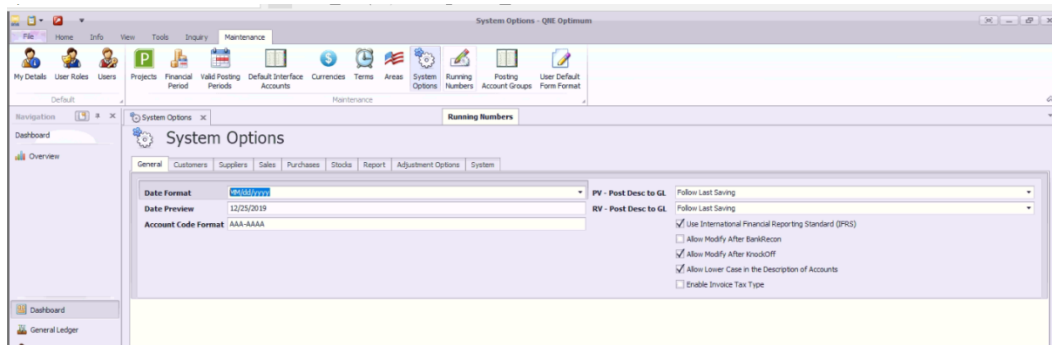




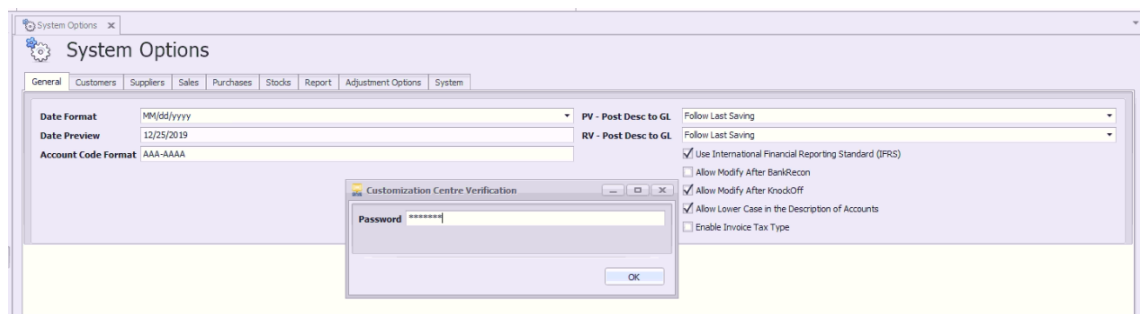
## HOW TO SET QNE OPTIMUM TO A DIFFERENT LANGUAGE

### Procedure(s):

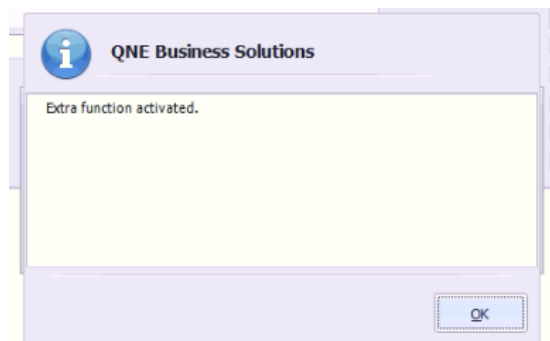
To setup QnE Optimum system to a different language (such as Chinese), go to Customization Centre. To activate the Customization Centre, go to Maintenance > System Options.



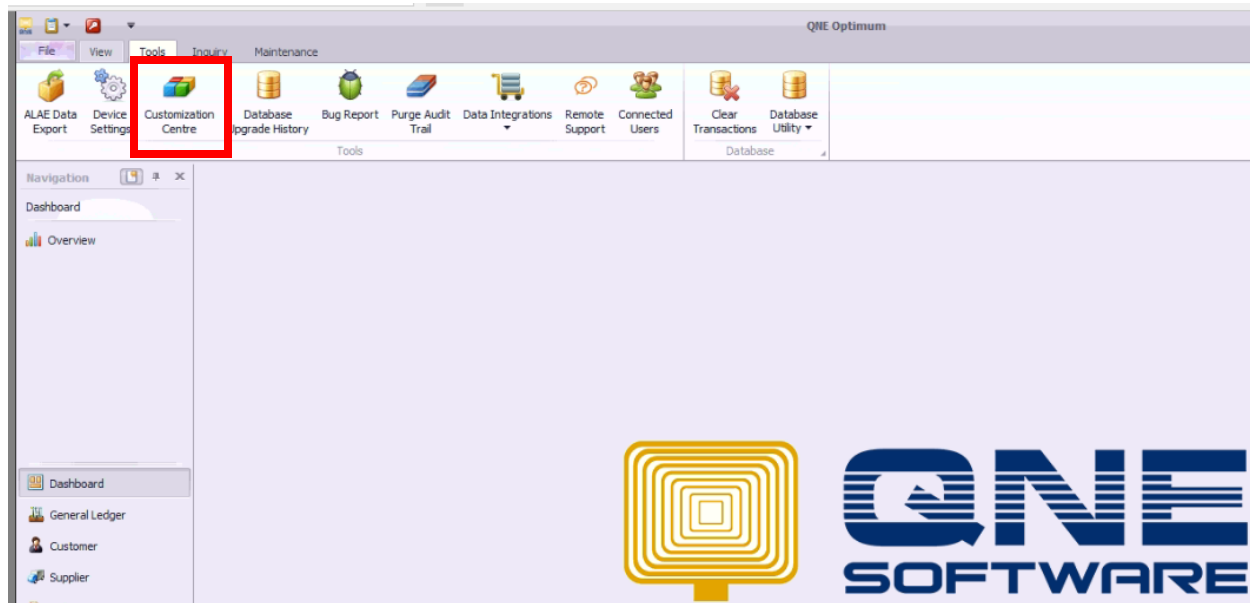
Once opened, press **CTRL + SHIFT + F9**. A pop-up window will prompt for password. Key-in 'qne2004' and click **OK**.



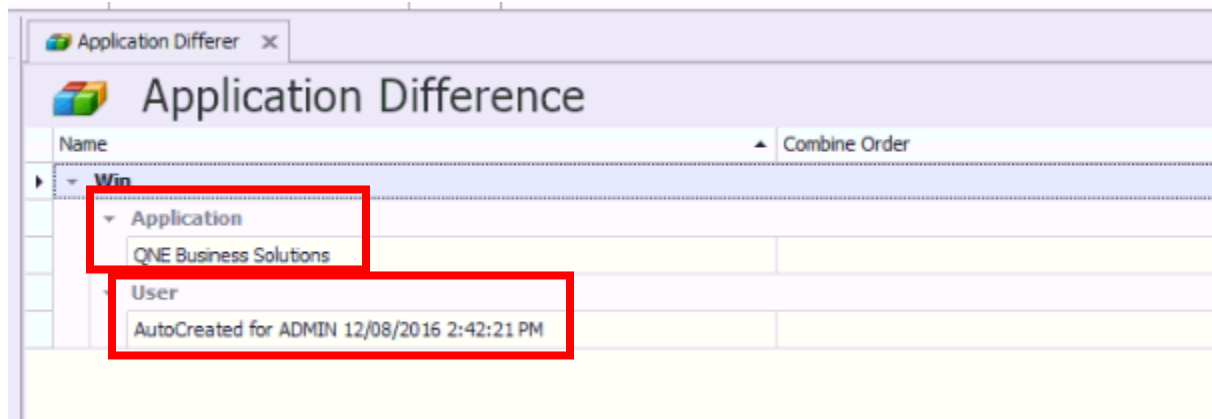
Once ok, a message prompt will confirm that an extra function is activated (Customization Centre).



Go to Tools > Customization Centre

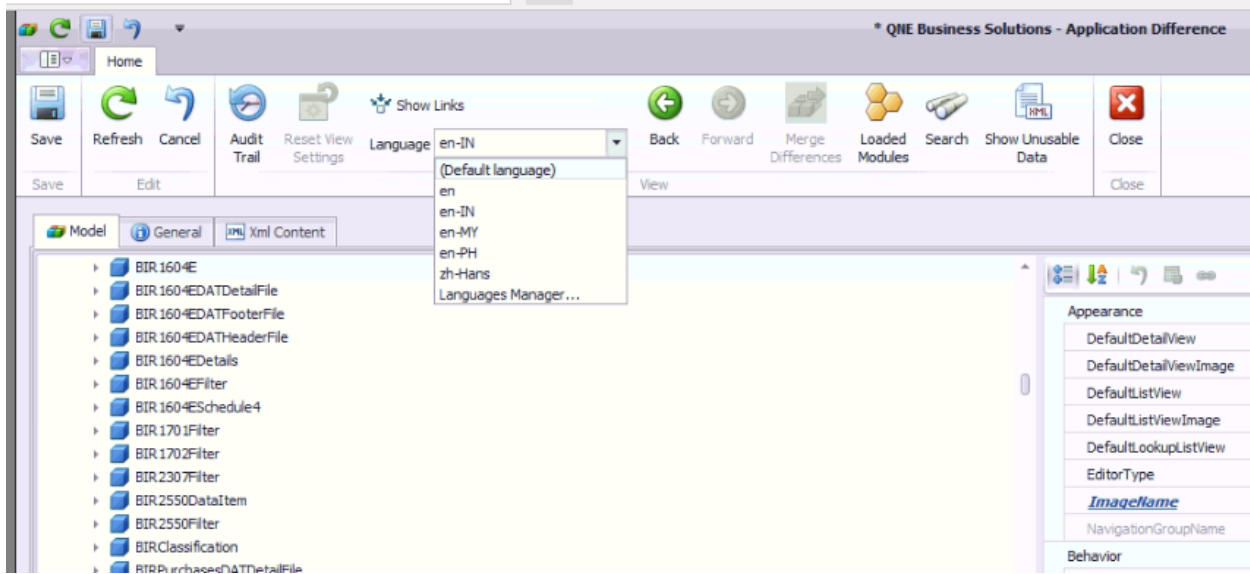


In the list, to apply the **change of language to all users**, click on the **Application**. To apply the **change of language to specific users**, click on the **specific user** where the change will be applied.

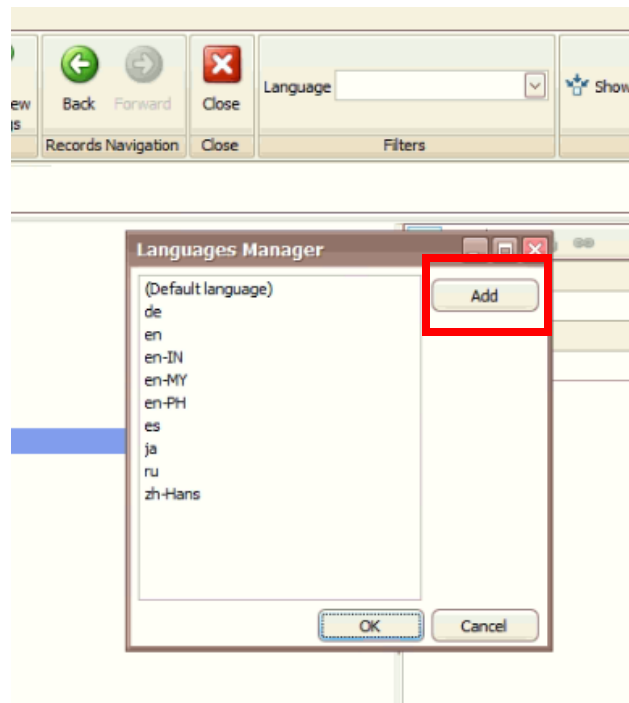


On the next window, choose from list of available languages in the Language dropdown.

NOTE: all languages with 'en' prefix is still English and for the Chinese, choose 'zh' prefix.



User may also add other languages available. Just choose the Languages Manager > Add



Learn with us.

Grow with us.



## QNE KNOWLEDGE BASE

Once all done, click **Save** and reopen QnE Business Solutions system.

### NOTE:



For further concerns regarding this matter, please contact support to assist you or create ticket thru this link <https://qnesupportph.freshdesk.com>

---

*Unit 806 Pearl of the Orient Tower, 1240 Roxas Blvd., Ermita Manila, 1000 Philippines*

*Tel. No.: +63 2 567-4248, +63 2 567-4253 Fax No.: +63 2 567-4250*

Website: [www.qne.com.ph](http://www.qne.com.ph)

Facebook: <https://www.facebook.com/QnEPH>

Follow our Twitter and Instagram account: @qnesoftwareph