

# Setup using Pagescope Web Connection.

KONICA MINOLTA

PAGE SCOPE Web Connection

Login

Public User

Administrator

◆ Log in as **administrator**

◆ Select ' User Auth/Account Track '

KONICA MINOLTA

PAGE SCOPE Web Connection

Model Name: bizhub C224e

Administrator

Logout

Ready to Scan

Low Paper

Maintenance System Settings Security **User Auth/Account Track** Network Box

Print Setting Store Address Wizard Customize To Main Menu

**General Settings**

- ▶ User Authentication Setting
- ▶ Account Track Settings
- ▶ Print without Authentication
- ▶ Simple Print Authentication Setting
- ▶ External Server Settings
- ▶ Public User Box Setting
- ▶ User/Account Common Setting
- ▶ Scan to Home Settings
- ▶ Scan to Authorized Folder Settings

**General Settings**

User Authentication ON (MFP) ▾

Overwrite User Info Restrict ▾

Default Authentication Method ON (External Server) ▾

Public User Access Restrict ▾

Ticket Hold Time Setting (Active Directory) 600 Minute (1-600)

Account Track OFF ▾

Account Track Input Method Account Name & Password ▾

Synchronize User Authentication & Account Track Synchronize ▾

Number of Counters Assigned

User Counter (1-999)

When Number of Jobs Reach Maximum Skip Job ▾

Temporarily Save Authentication Information Disable ▾

Reconnection Settings

- Reconnect for every login
- Set Reconnect Interval

Reconnection Time 10 Minute (1-1440)

Expiration Date Settings

Expiration Date 42 Day(s) (1-999)

OK Cancel

- ◆ Set 'User Authentication' to On (MFP)
- ◆ OK
- ◆ OK

The screenshot shows the Konica Minolta Web Connection interface. At the top, it displays the Konica Minolta logo, the user 'Administrator', and a 'Logout' button. Below this, it shows 'PAGE SCOPE Web Connection' and 'Model Name: bizhub C224e'. There are status indicators for 'Ready to Scan' and 'Low Paper'. A navigation bar contains several tabs: Maintenance, System Settings, Security, User Auth/Account Track (highlighted), Network, and Box. Below the navigation bar are buttons for 'Print Setting', 'Store Address', 'Wizard', 'Customize', and 'To Main Menu'. The main content area shows a sidebar with a list of settings: General Settings, User Authentication Setting, Account Track Settings, Print without Authentication, Simple Print Authentication Setting, External Server Settings, Public User Box Setting, User/Account Common Setting, Scan to Home Settings, and Scan to Authorized Folder Settings. The 'User Authentication Setting' is selected, and a dialog box is displayed with the text: 'General Settings. The registered User and Account data will be cleared. OK to proceed?'. At the bottom right of the dialog box are 'OK' and 'Cancel' buttons.

The screenshot shows a simple dialog box with the text 'Completed.' centered on the screen. At the bottom right of the dialog box is an 'OK' button.

- ◆ OK

- ◆ Go to 'User Authentication Settings'
- ◆ New Registration

KONICA MINOLTA  
PAGE SCOPE Web Connection  
Model Name: bizhub C224e

Administrator Logout ?

Ready to Scan

Low Paper

Maintenance System Settings Security **User Auth/Account Track** Network Box

Print Setting Store Address Wizard Customize To Main Menu

**User Registration**

No.  
 Use opening number  
 Input directly

User Name

E-mail Address

User Password

Retype User Password

Temporarily stop use

Function Permission

Copy

Scan

Print

User Box

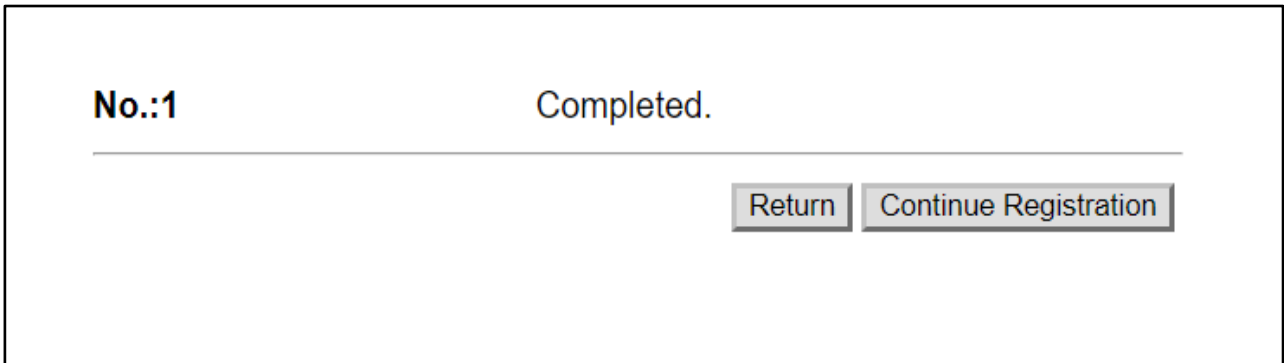
Print Scan/Fax TX

Manual Destination Input

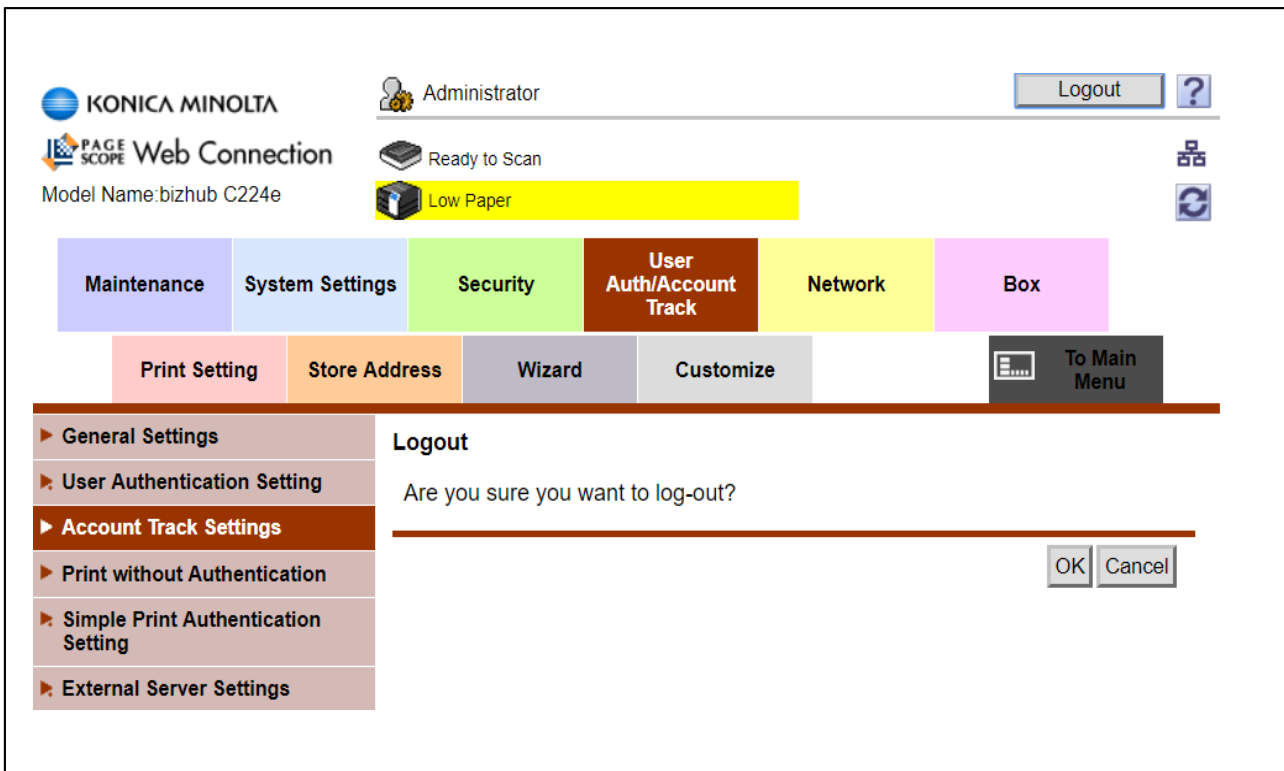
Max. Allowance Set  
Total Allowance

- ◆ Enter User Name, Email Address (not required) and Password
- ◆ Setup Function Permission for the account.

- ◆ Setup any restrictions required on the account.
- ◆ OK



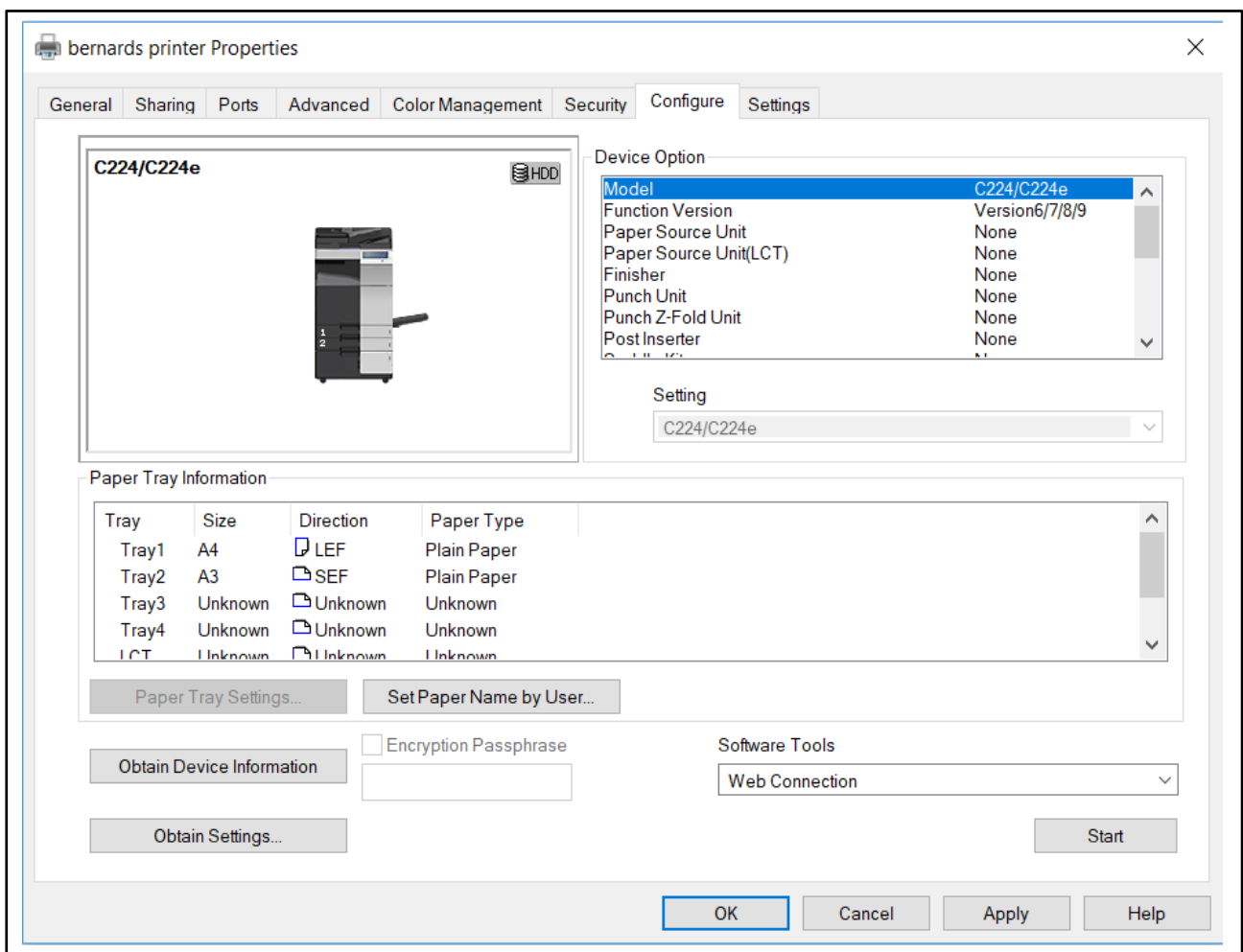
- ◆ Return to list of accounts or register more accounts by 'Continue Registration
- ◆ Logout.



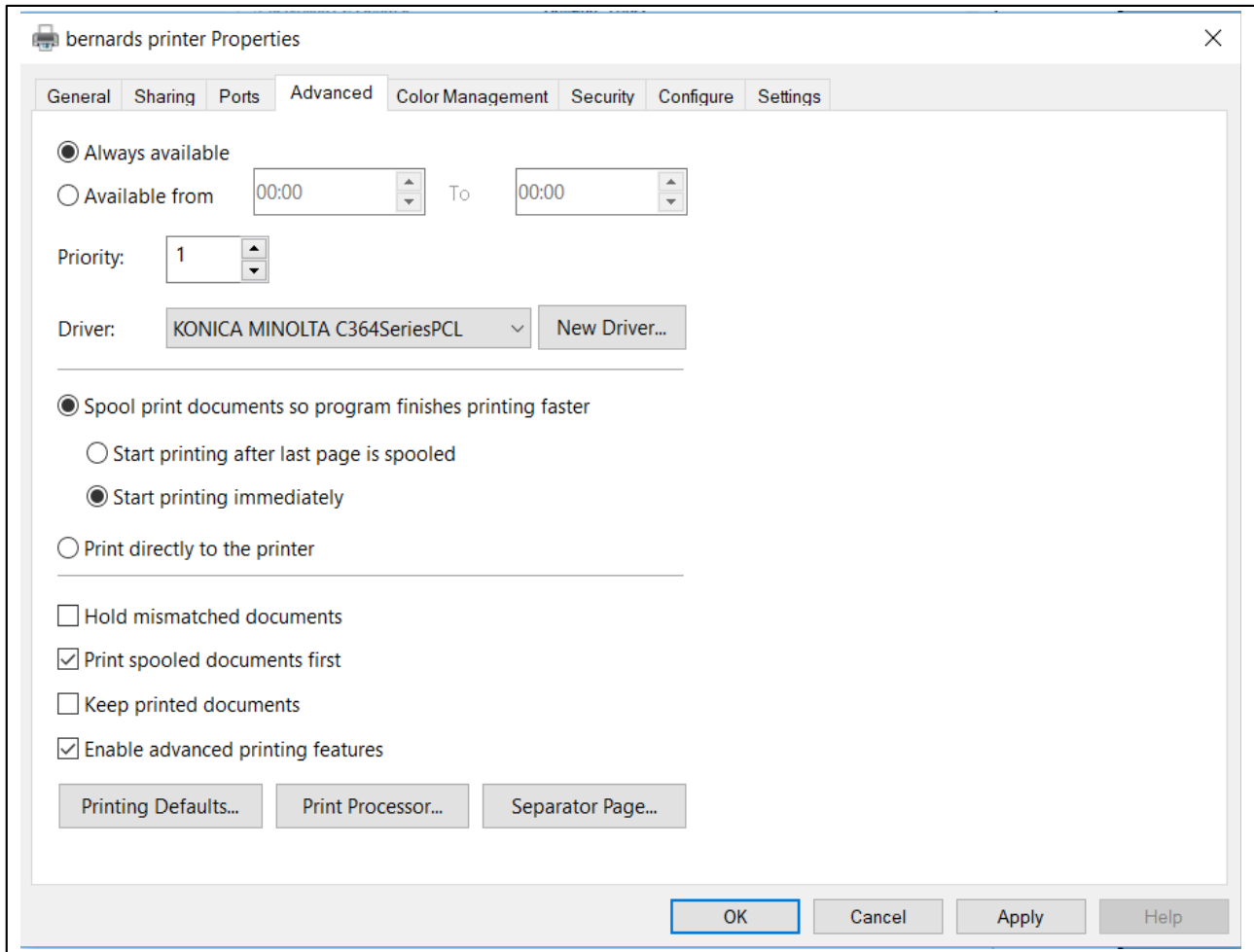
- ◆ OK.

## Setup Print Drivers for Account Track.

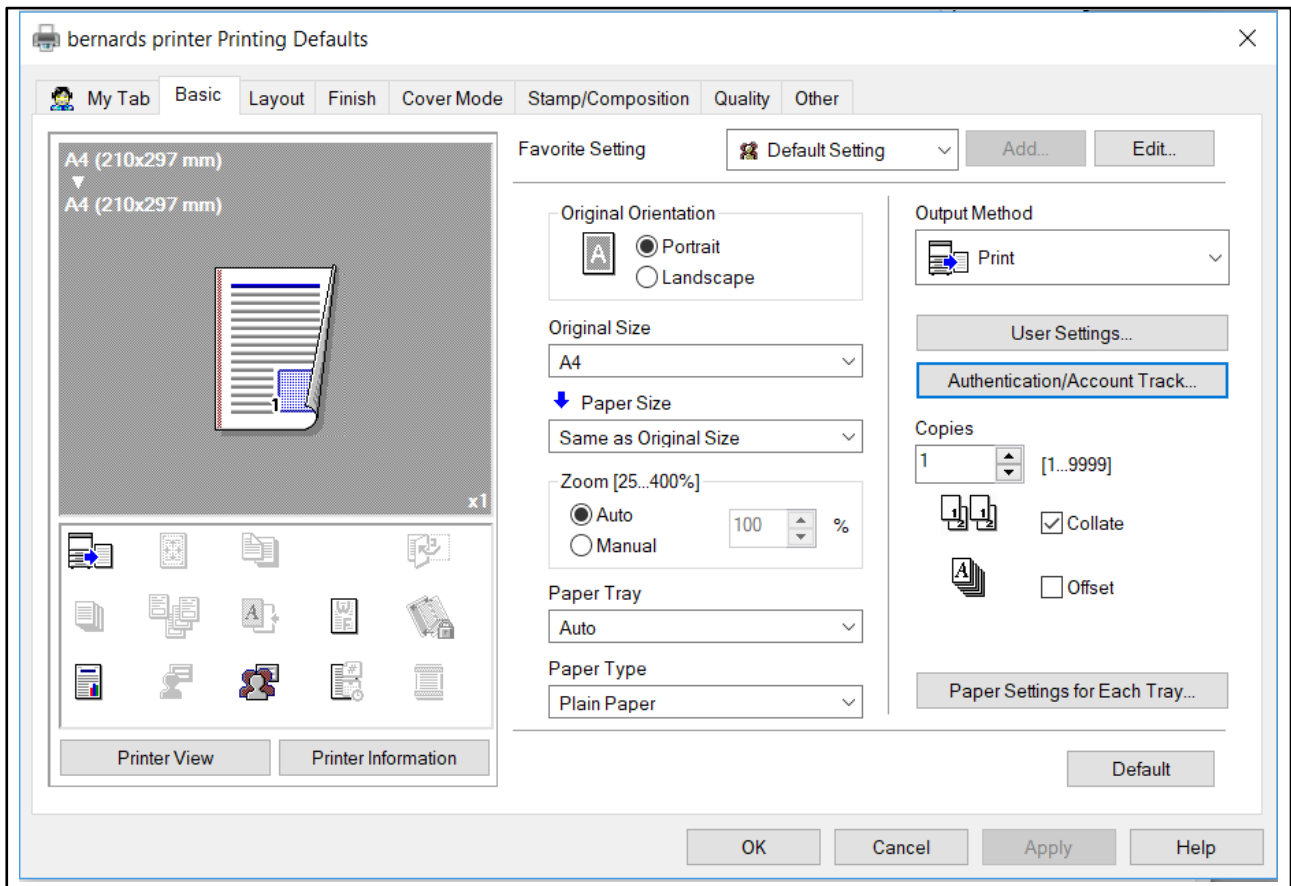
- ◆ Control Panel
- ◆ Devices and Printers
- ◆ Right Click Printer Icon
- ◆ Printer Properties
- ◆ Configure Tab and ensure Model is set to correct machine model.
- ◆ In Device Options, scroll down to User Authentication and turn on.



- ◆ Advanced Tab
- ◆ Printing Defaults



- ◆ Basic Tab



- ◆ Authentication/Account Track.
- ◆ Enter User Name and Password
- ◆ Verify

User Authentication/Account Track

**User Authentication**

Public User

Recipient User

User Name

Password


**Server Setting...**

**Account Track**

Department Name

Password

**Verify**

  Enable Single Sign-On functionality for printing functions

---

- ◆ OK
- ◆ Apply
- ◆ OK
- ◆ General Tab
- ◆ Preferences
- ◆ Check settings are in Authentication/Account Track settings on Basic Tab.
- ◆ OK
- ◆ OK
- ◆ OK



bernards printer Properties



- General
- Sharing
- Ports
- Advanced
- Color Management
- Security
- Configure
- Settings



bernards printer

Location:

Comment:

Model: KONICA MINOLTA C364SeriesPCL

Features

Color: Yes

Paper available:

Double-sided: Yes

Staple: No

Speed: 45 ppm

Maximum resolution: 1200 dpi

- A0
- A1
- A2
- A3
- A4

Preferences...

Print Test Page

OK

Cancel

Apply

Help