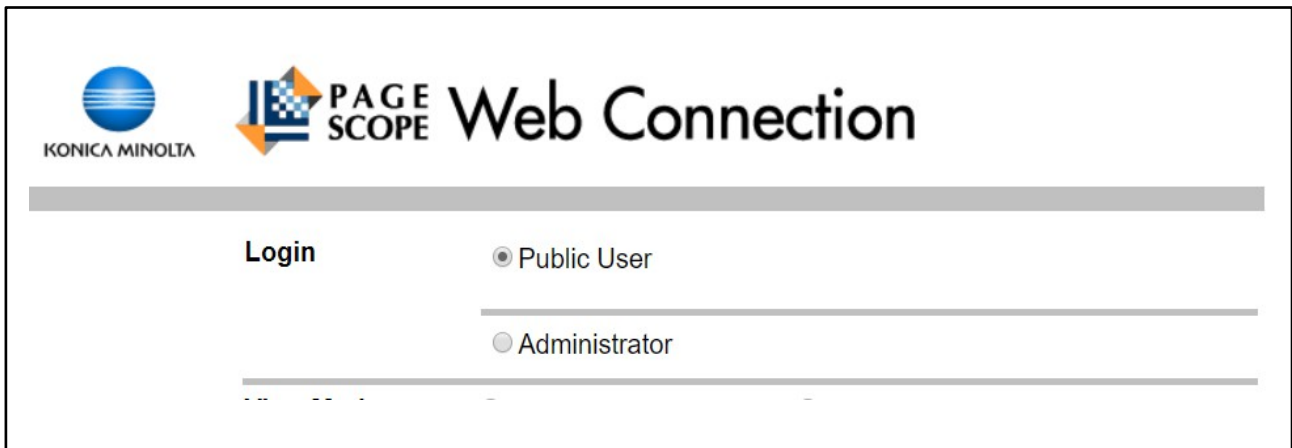
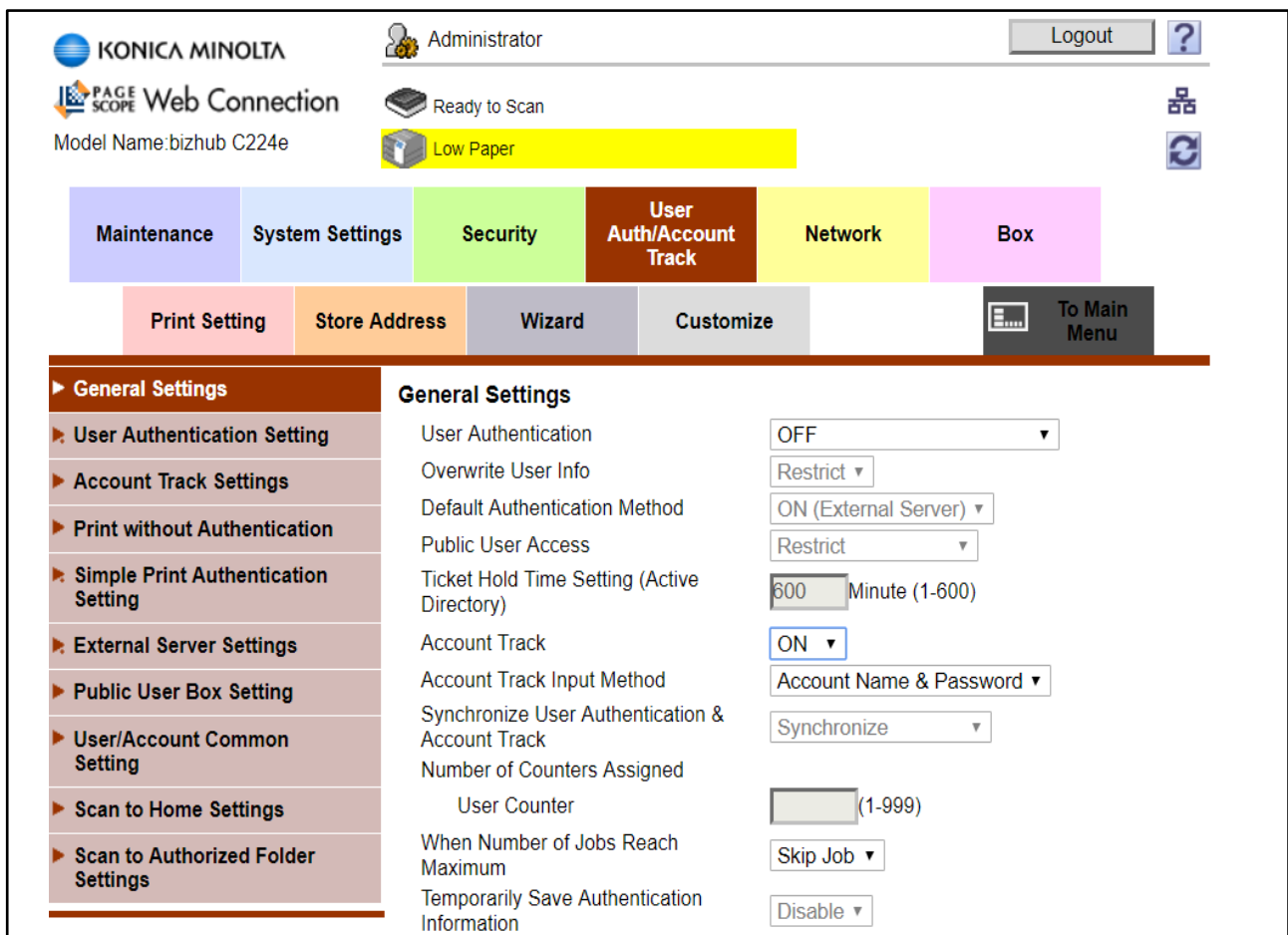


Setup using Pagescope Web Connection.



- ◆ Log in as **administrator**
- ◆ Select ' User Auth/Account Track '



KONICA MINOLTA Administrator Logout ?

PAGE SCOPE Web Connection Ready to Scan ?

Model Name: bizhub C224e Low Paper ?

Maintenance System Settings Security **User Auth/Account Track** Network Box

Print Setting Store Address Wizard Customize To Main Menu

General Settings

▶ User Authentication Setting	User Authentication	OFF ▼
▶ Account Track Settings	Overwrite User Info	Restrict ▼
▶ Print without Authentication	Default Authentication Method	ON (External Server) ▼
▶ Simple Print Authentication Setting	Public User Access	Restrict ▼
▶ External Server Settings	Ticket Hold Time Setting (Active Directory)	600 Minute (1-600)
▶ Public User Box Setting	Account Track	ON ▼
▶ User/Account Common Setting	Account Track Input Method	Account Name & Password ▼
▶ Scan to Home Settings	Synchronize User Authentication & Account Track	Synchronize ▼
▶ Scan to Authorized Folder Settings	Number of Counters Assigned	
	User Counter	(1-999)
	When Number of Jobs Reach Maximum	Skip Job ▼
	Temporarily Save Authentication Information	Disable ▼

- ◆ Set 'Account Track ' to On
- ◆ Set ' Account Track Input Method ' to either 'Account Name & Password' or 'Password Only'.

The screenshot shows a web-based configuration interface. At the top, there are navigation tabs: Maintenance (purple), System Settings (light blue), Security (light green), **User Auth/Account Track** (dark red), Network (yellow), and Box (pink). Below these are secondary tabs: Print Setting (light red), Store Address (orange), Wizard (grey), Customize (light grey), and To Main Menu (dark grey with a menu icon).

The main content area is titled 'General Settings' and is divided into a left sidebar and a main settings panel. The sidebar contains a list of expandable categories: General Settings, User Authentication Setting, Account Track Settings, Print without Authentication, Simple Print Authentication Setting, External Server Settings, Public User Box Setting, User/Account Common Setting, Scan to Home Settings, and Scan to Authorized Folder Settings. The 'Account Track Settings' category is currently expanded.

The main settings panel for 'General Settings' includes the following options:

- User Authentication: OFF (dropdown)
- Overwrite User Info: Restrict (dropdown)
- Default Authentication Method: ON (External Server) (dropdown)
- Public User Access: Restrict (dropdown)
- Ticket Hold Time Setting (Active Directory): 600 Minute (1-600)
- Account Track: ON (dropdown)
- Account Track Input Method: Password Only (dropdown)
- Synchronize User Authentication & Account Track: Synchronize (dropdown)
- Number of Counters Assigned: [] (1-999)
- User Counter: [] (1-999)
- When Number of Jobs Reach Maximum: Skip Job (dropdown)
- Temporarily Save Authentication Information: Disable (dropdown)
- Reconnection Settings:
 - Reconnect for every login
 - Set Reconnect Interval
 - Reconnection Time: 10 Minute (1-1440)
- Expiration Date Settings:
 - Disable (dropdown)
 - Expiration Date: 42 Day(s) (1-999)

At the bottom right of the settings panel are 'OK' and 'Cancel' buttons. A status bar at the very bottom contains the text 'avaascript:html_f.about('about.html')'.

- ◆ OK

KONICA MINOLTA Administrator Logout ?

PAGE SCOPE Web Connection Ready to Scan ?

Model Name: bizhub C224e Low Paper ?

Maintenance System Settings Security User Auth/Account Track Network Box

Print Setting Store Address Wizard Customize To Main Menu

General Settings

- ▶ User Authentication Setting
- ▶ Account Track Settings
- ▶ Print without Authentication
- ▶ Simple Print Authentication Setting
- ▶ External Server Settings
- ▶ Public User Box Setting
- ▶ User/Account Common Setting
- ▶ Scan to Home Settings
- ▶ Scan to Authorized Folder Settings

General Settings

The registered User and Account data will be cleared. OK to proceed?

OK Cancel

◆ OK

Completed.

OK

◆ OK

- ◆ Go to 'Account Track Settings'
- ◆ New Registration

Maintenance	System Settings	Security	User Auth/Account Track	Network	Box
Print Setting	Store Address	Wizard	Customize	To Main Menu	

<ul style="list-style-type: none"> ▶ General Settings ▶ User Authentication Setting ▶ Account Track Settings ▶ Print without Authentication ▶ Simple Print Authentication Setting ▶ External Server Settings ▶ Public User Box Setting ▶ User/Account Common Setting ▶ Scan to Home Settings ▶ Scan to Authorized Folder Settings ▶ Counter Remote Control 	<h3>Account Track Registration</h3> <p>No.</p> <p> <input checked="" type="radio"/> Use opening number <input type="radio"/> Input directly </p> <p> <input type="text" value=""/> (1-1000) </p> <p> Password <input type="text"/> </p> <p> Retype Password <input type="text"/> </p> <p> Name <input type="text"/> </p> <hr/> <p> Temporarily stop use <input type="button" value="Continue Job"/> </p> <hr/> <p> Function Permission </p> <p> Copy <input type="text" value="Full Color/Black"/> </p> <p> Scan <input type="text" value="Full Color/Black"/> </p> <p> Print <input type="text" value="Full Color/Black"/> </p> <p> Print Scan/Fax TX <input type="text" value="Full Color/Black"/> </p> <hr/> <p> Max. Allowance Set </p> <p> Total Allowance </p> <p> <input type="checkbox"/> Total <input type="text" value="1"/> (1-9999999) </p> <p> Individual Allowance </p> <p> <input type="checkbox"/> Color <input type="text" value="1"/> (1-9999999) </p> <p> <input type="checkbox"/> Black <input type="text" value="1"/> (1-9999999) </p> <p> Box Administration </p> <p> <input type="checkbox"/> Box Count <input type="text" value="1"/> (0-1000) </p> <hr/> <p style="text-align: right;"> <input type="button" value="OK"/> <input type="button" value="Cancel"/> </p>
--	--

- ◆ Enter account information including Password and Name.
- ◆ Setup Function Permission for the account.
- ◆ Setup any restrictions required on the account.
- ◆ OK

No.:1

Completed.

Return

Continue Registration

- ◆ Return to list of accounts or register more accounts by 'Continue Registration'

The screenshot displays the Konica Minolta Web Connection interface. At the top left, the Konica Minolta logo and 'PAGE SCOPE Web Connection' are visible, along with the model name 'bizhub C224e'. The user is logged in as 'Administrator'. A 'Logout' button and a help icon are in the top right. Below the header, there are status indicators: 'Ready to Scan' and a yellow 'Low Paper' warning. A navigation menu includes 'Maintenance', 'System Settings', 'Security', 'User Auth/Account Track' (highlighted), 'Network', and 'Box'. Below this, there are buttons for 'Print Setting', 'Store Address', 'Wizard', 'Customize', and 'To Main Menu'. The main content area is titled 'Account Track Registration' and features a 'New Registration' button. A search field labeled 'Search by number.' has a dropdown menu set to '1-50' and a 'Go' button. Below the search field is a table with one row of account data.

No.	Account Name	Edit	Delete
1	brian	Edit	Delete

- ◆ Logout.



Maintenance

System Settings

Security

User Auth/Account Track

Network

Box

Print Setting

Store Address

Wizard

Customize



To Main Menu

- ▶ General Settings
- ▶ User Authentication Setting
- ▶ Account Track Settings
- ▶ Print without Authentication
- ▶ Simple Print Authentication Setting
- ▶ External Server Settings

Logout

Are you sure you want to log-out?

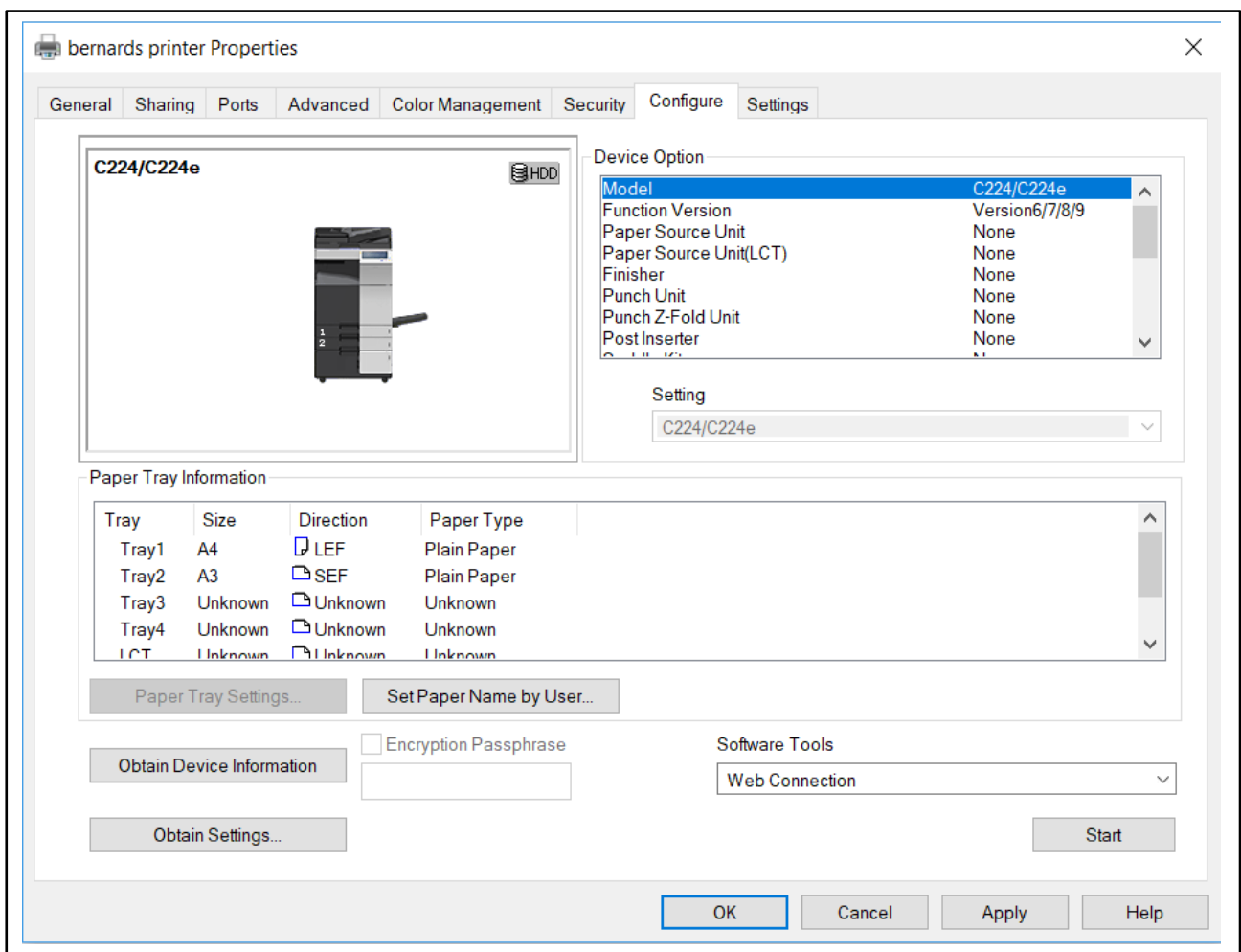
OK

Cancel

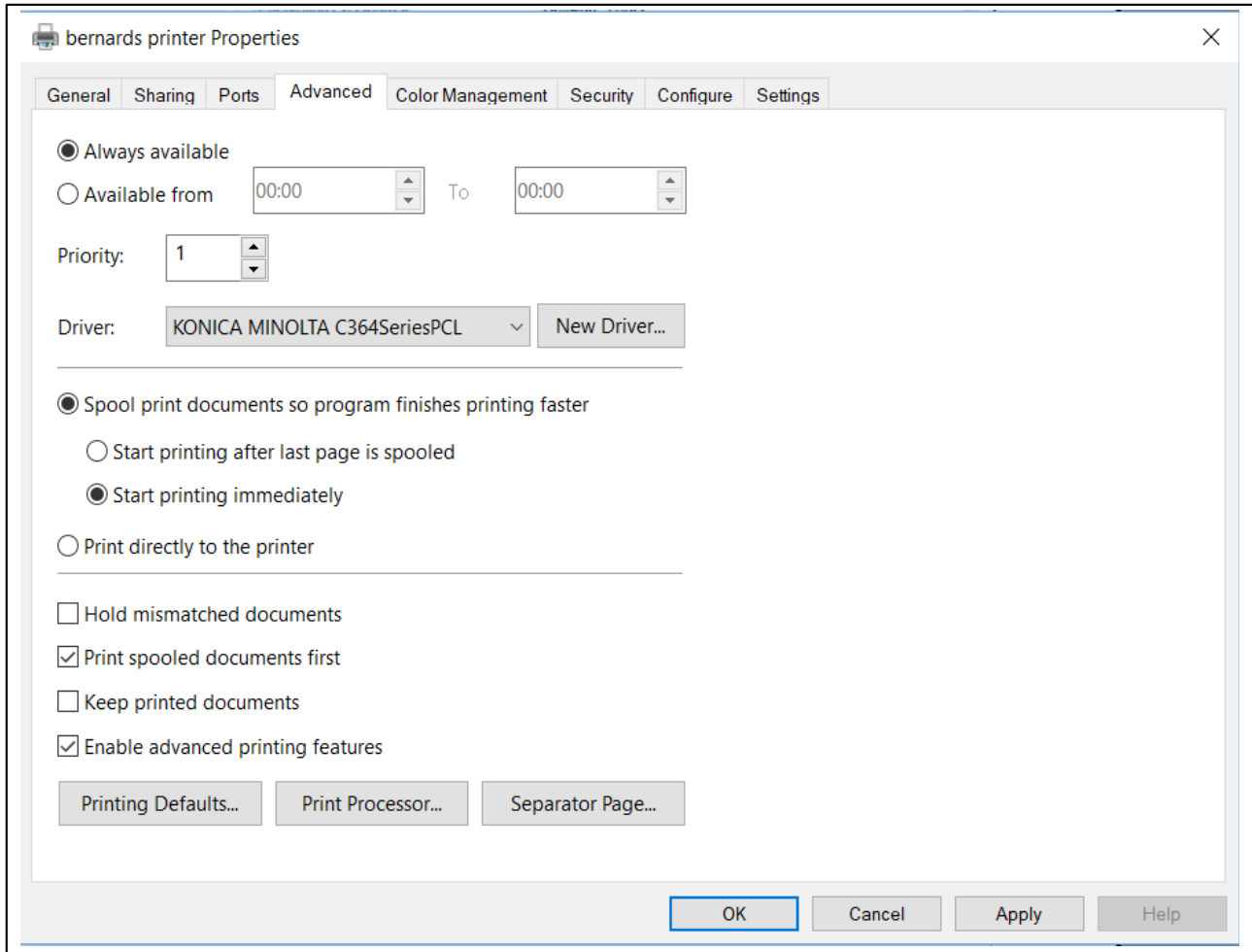
◆ OK.

Setup Print Drivers for Account Track.

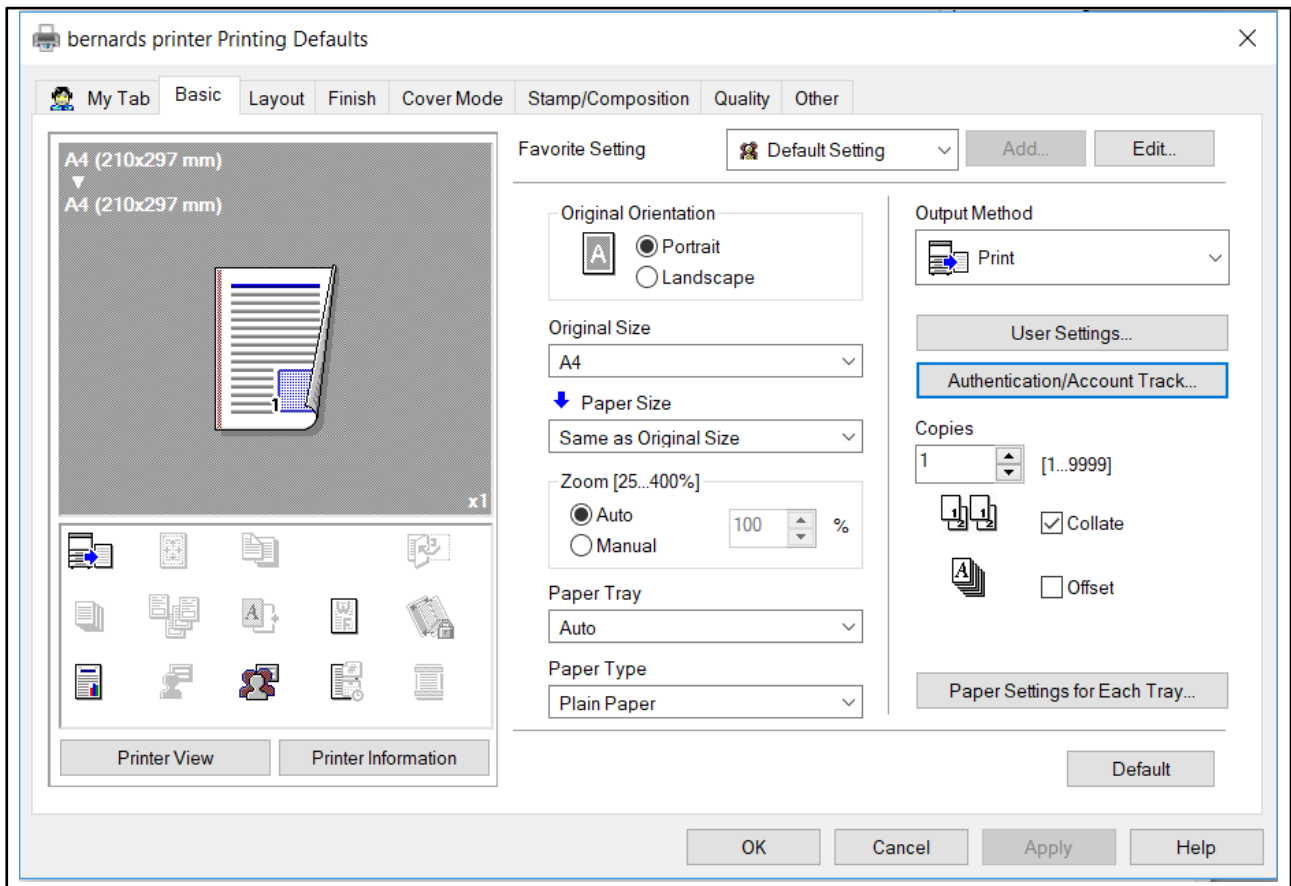
- ◆ Control Panel
- ◆ Devices and Printers
- ◆ Right Click Printer Icon
- ◆ Printer Properties
- ◆ Configure Tab and ensure Model is set to correct machine model.



- ◆ Advanced Tab
- ◆ Printing Defaults



- ◆ Basic Tab



- ◆ Authentication/Account Track.
- ◆ Enter Name and Password or Password only.
- ◆ Verify

User Authentication/Account Track

User Authentication

Public User
 Recipient User

User Name
BWarren

Password


Server Setting...

Account Track

Department Name

Password

Verify

 Enable Single Sign-On functionality for printing functions

OK Cancel Help

- ◆ OK
- ◆ Apply
- ◆ OK
- ◆ General Tab
- ◆ Preferences
- ◆ Check settings are in Authentication/Account Track settings on Basic Tab.
- ◆ OK
- ◆ OK
- ◆ OK

bernards printer Properties



General Sharing Ports Advanced Color Management Security Configure Settings



bernards printer

Location:

Comment:

Model: KONICA MINOLTA C364SeriesPCL

Features

Color: Yes

Paper available:

Double-sided: Yes

Staple: No

Speed: 45 ppm

Maximum resolution: 1200 dpi

- A0
- A1
- A2
- A3
- A4

Preferences...

Print Test Page

OK

Cancel

Apply

Help