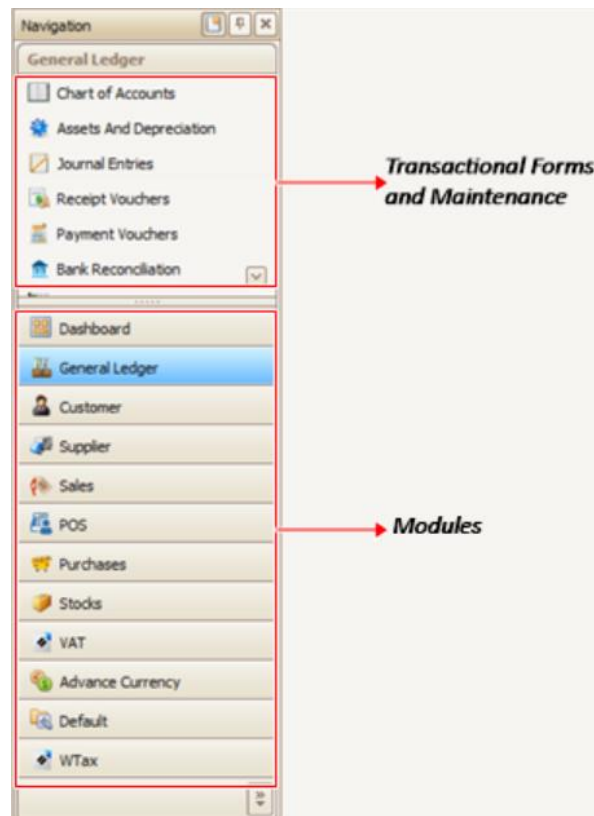




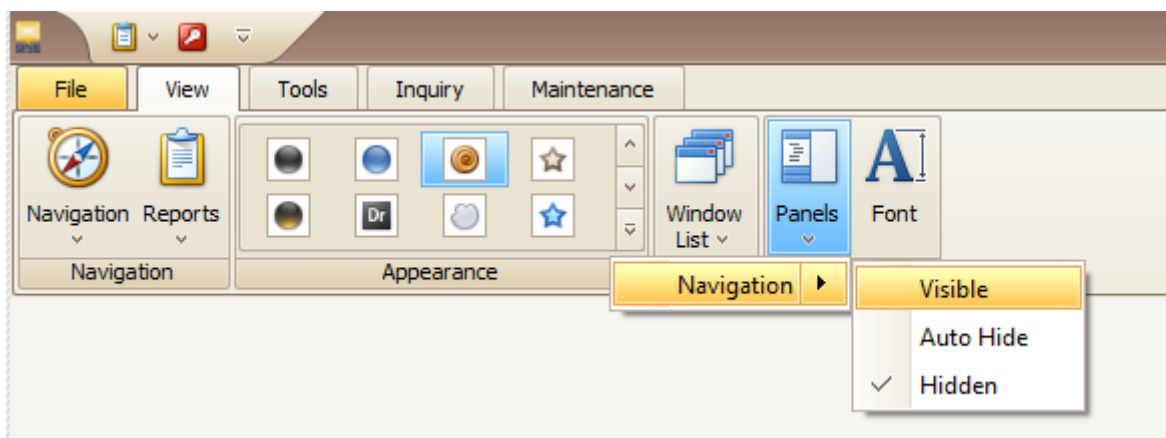
HOW TO MAKE THE NAVIGATION PANE VISIBLE

What is NAVIGATION PANE?

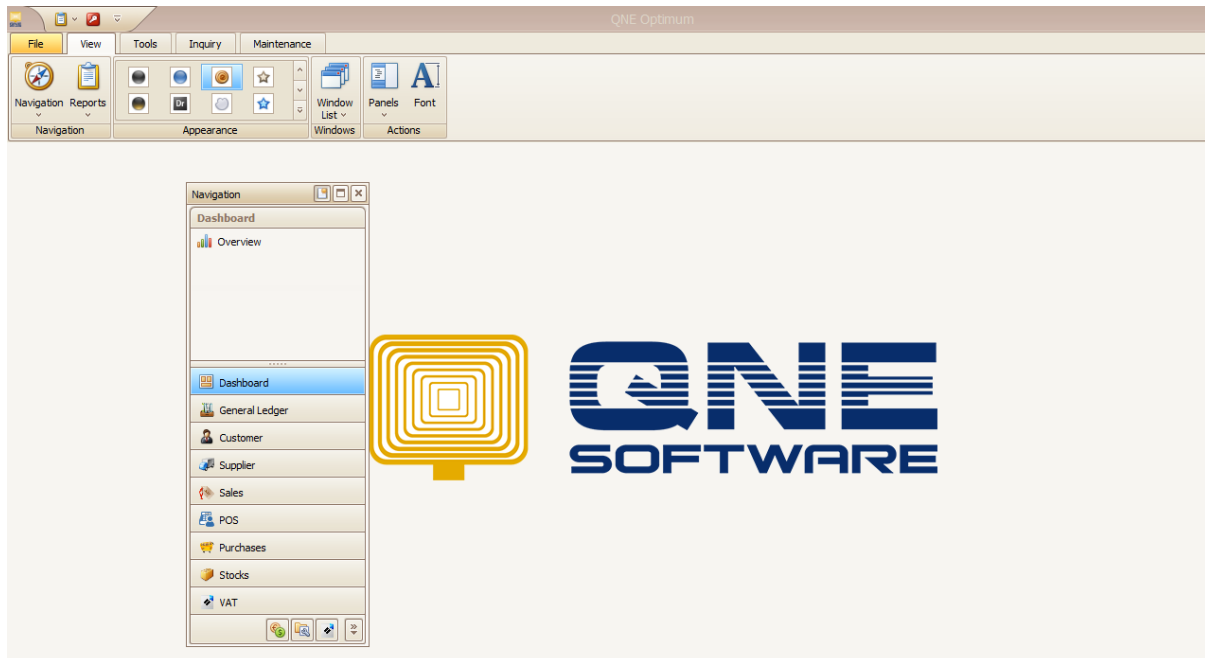
A **Navigation Pane** provides the main functionalities in the system and it is organized by Modules, and each Modules consist of Transactional Forms and Maintenance.



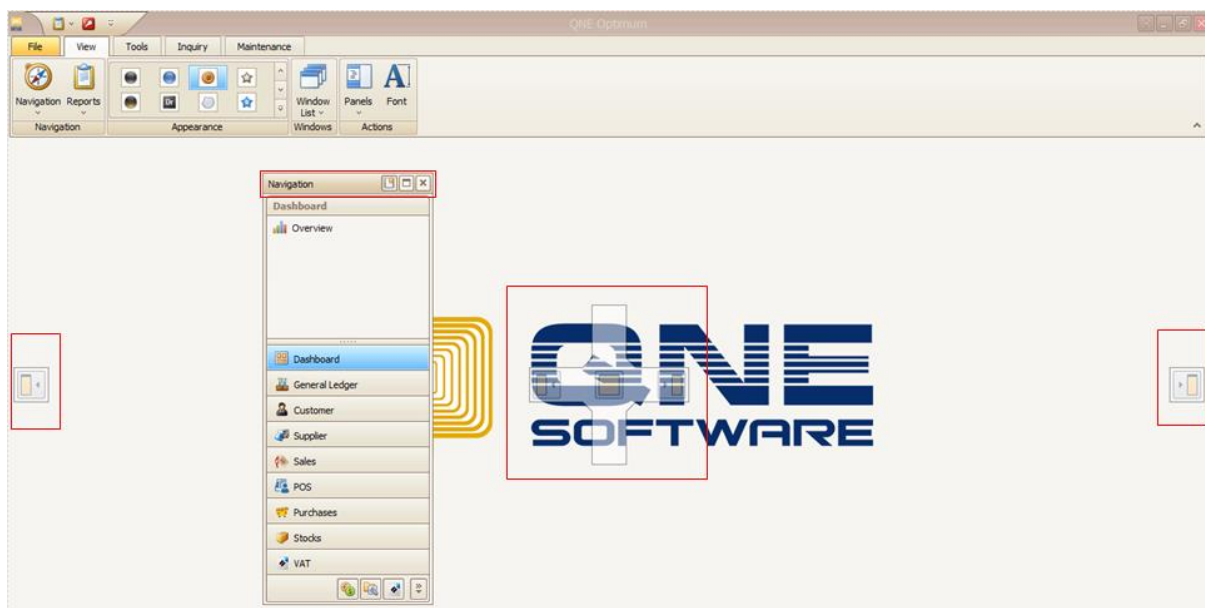
There are instances that the Navigation Pane is closed accidentally. To get it Visible, under **View** in Menu Ribbon > **Panels** > **Navigation** > **Visible**.



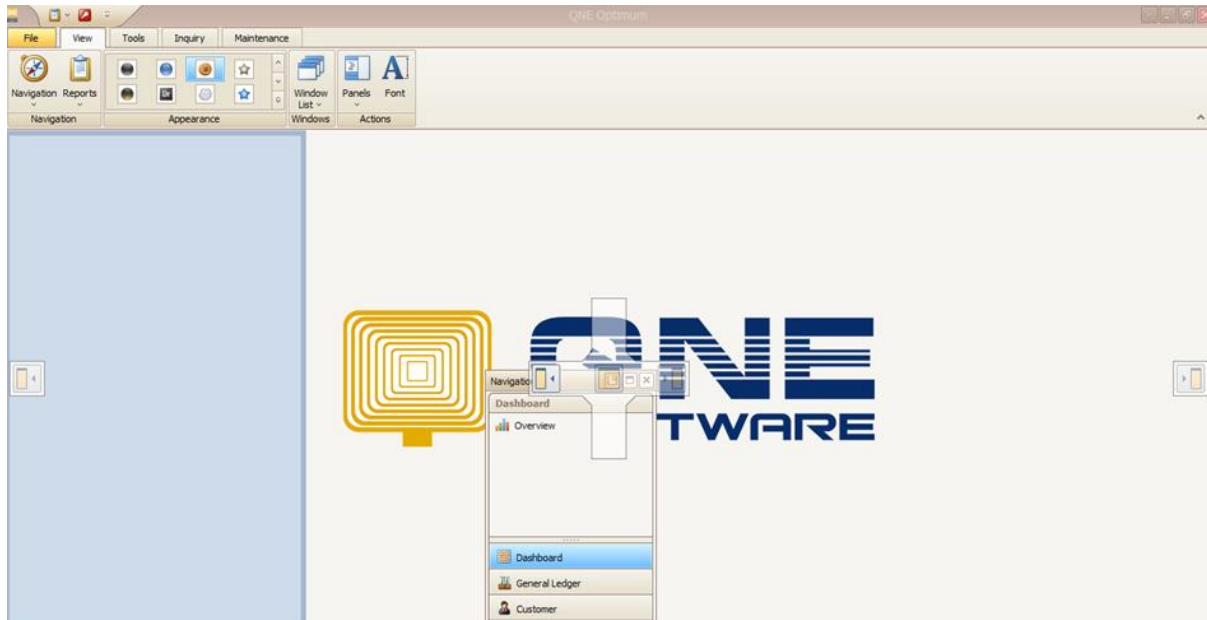
In Addition, there are also instances that the Navigation Pane is dragged out to its Default position.



To get that back to its Default Location, Drag and Hold the *Navigation Pane* and it will show a Guide Path on where to Place it.



Then drag it to the Guide Path for its desired position, also it shows a preview from where it will be positioned then let go of the Navigation Pane.



Then Navigation Pane will be placed to its desired Position again.

