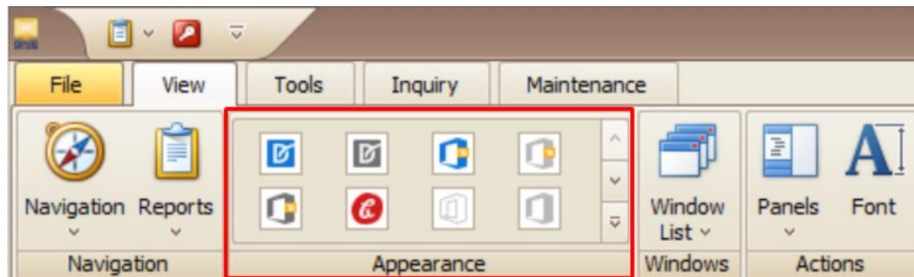




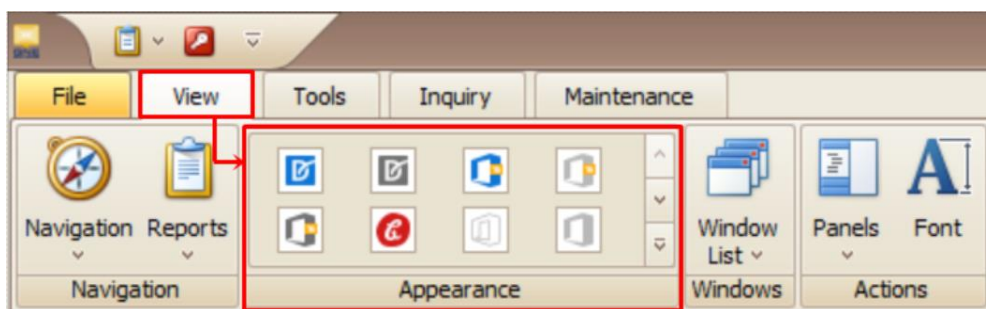
HOW TO CHANGE THE APPEARANCE OF THE SYSTEM

In System, there is a feature where the **Appearance** of the system can be changed base on user's own preference.



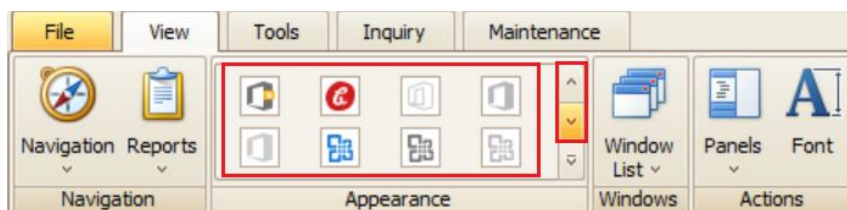
How to Change the **Appearance of the System**

Under View tab > **Appearance**

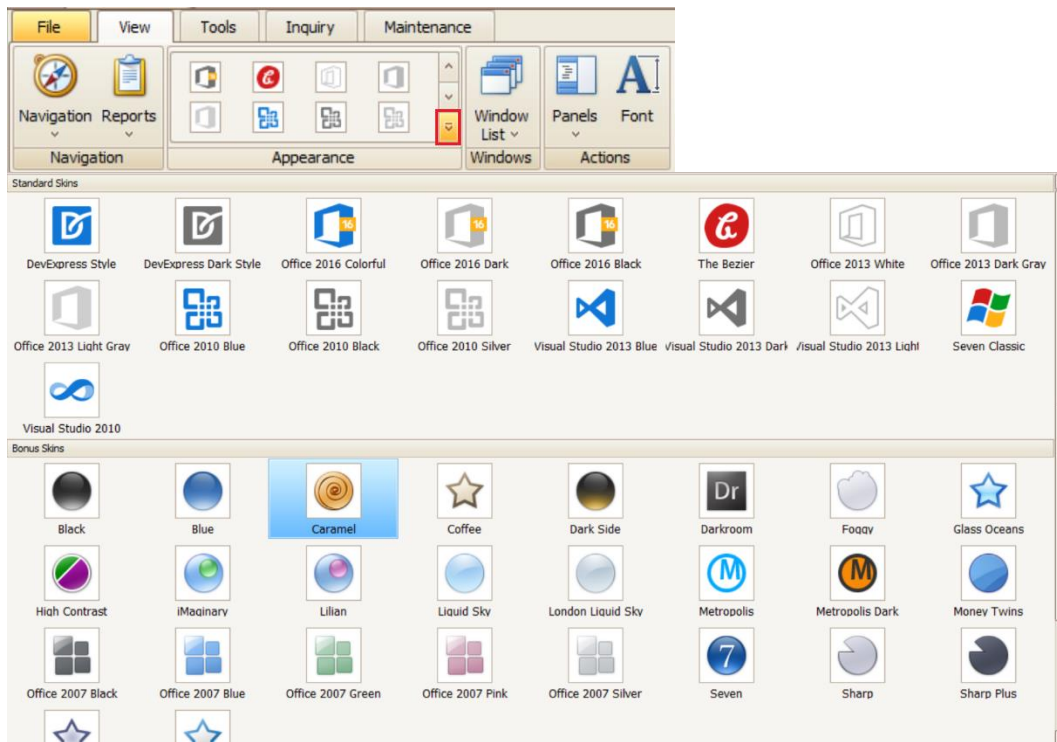


There are two ways to Browse the Themes in the System:

- i. Using the **Up and Down Icon**, it shows the list of the skins in the mini window and it only displays 8 skins at a time



- ii. Using the *Show All Icon*, it displays all the skins in the system



Then Select the Preferred Skin for it to be Applied. In the sample screenshot below, the skin of the whole system changed. The user has a lot of options to choose from.

